

## Secure, safe & sustainable

Designed for correctional facilities to withstand challenging environments and provide the most durable and secure privacy booth on the market.



Virtual  
attorney visits



Telehealth /  
telepsychiatry visits

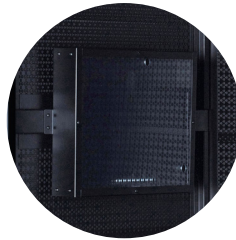


Virtual  
courtroom



### Active Ventilation

Four fans secured behind tamper proof steel grates circulate air to keep the booth cool and fresh. The air inside the booth is replaced more than once every minute.



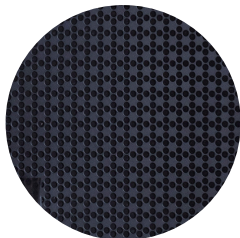
### Video Conference Ready

Steel monitor enclosure secured to the booth with polycarbonate screen guard.



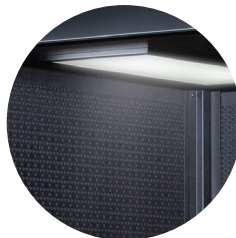
### Exterior Electrical Outlets

Light switch, power outlets, and CPU mounted on the exterior wall in a solid breathable box to prevent offender access.



### Perforated Steel Interior

Perforated steel covers acoustic panels to provide security and durability while maintaining privacy and sound absorption.



### LED Lighting

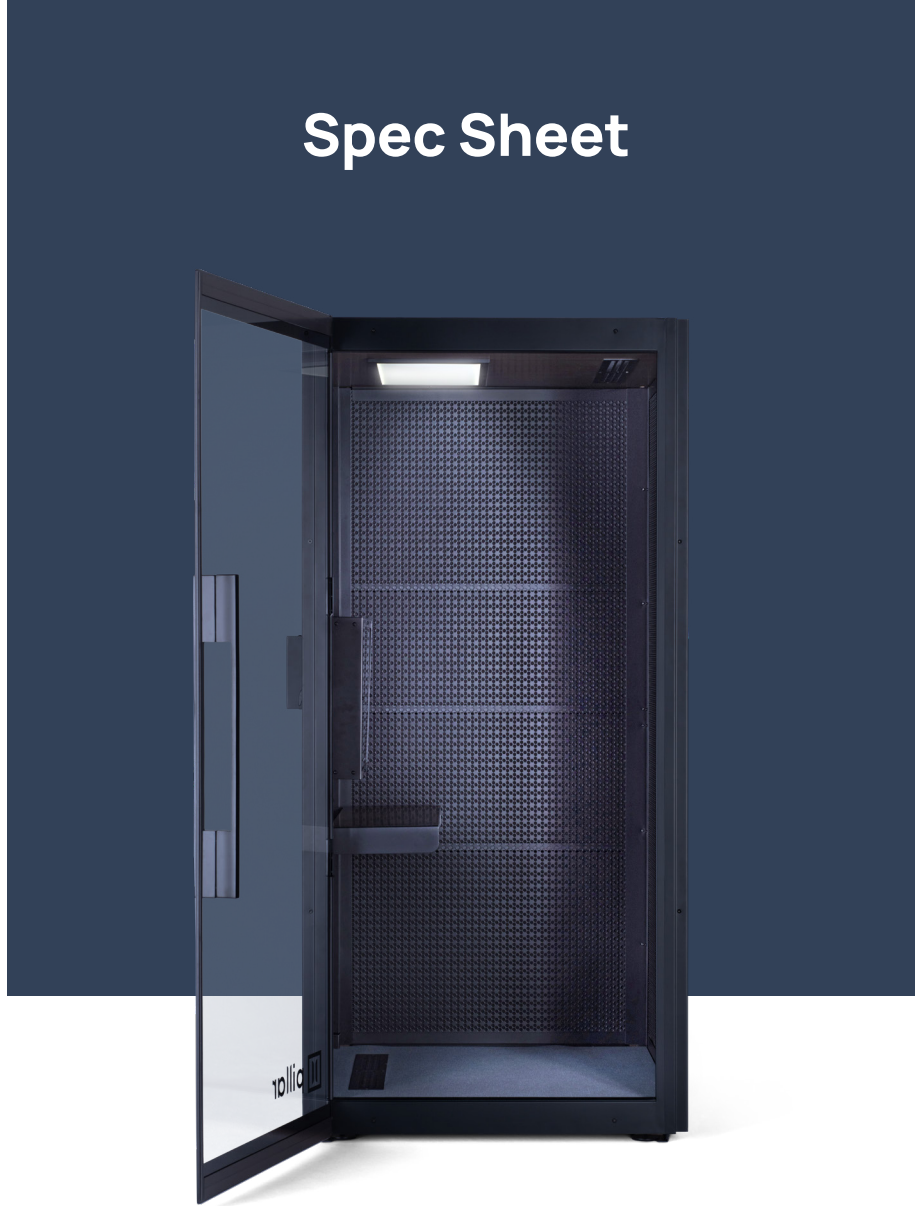
LED lighting with a protective polycarbonate cover preserves energy and creates a well-lit environment for video conferences and important conversations.



### Quality and Sustainable Materials

With a focus on locally sourced materials, booths are designed and built in Chicago Heights, IL.

# Spec Sheet



## Specifications

- Weight – 600 lb / 272.16 kg
- Power – 3 outlets
- Power Cord – 120v, 3 prong plug, UL Listed
- Light – 24" w x 12" d with polycarbonate cover and steel frame surround; 1,100 Lumens Lasting 50,000 hours
- Desk – 34.5" w x 12" d
- Torx pin security fasteners
- 3/8" thick polycarbonate door
- Perforated steel panels to protect acoustic panels
- Ethernet, CAT6e, Power Cord length – 5.5ft
- Airflow – 72 ft<sup>3</sup>/min, 4 fans

## Dimensions

### EXTERIOR

- 44.6" w x 42.5" d x 89" h (without handle)
- 44.6" w x 44.5" d x 89" h (with handle)
- 79" d (with door open)

### INTERIOR

- 39" w x 39" d x 81.5" h

