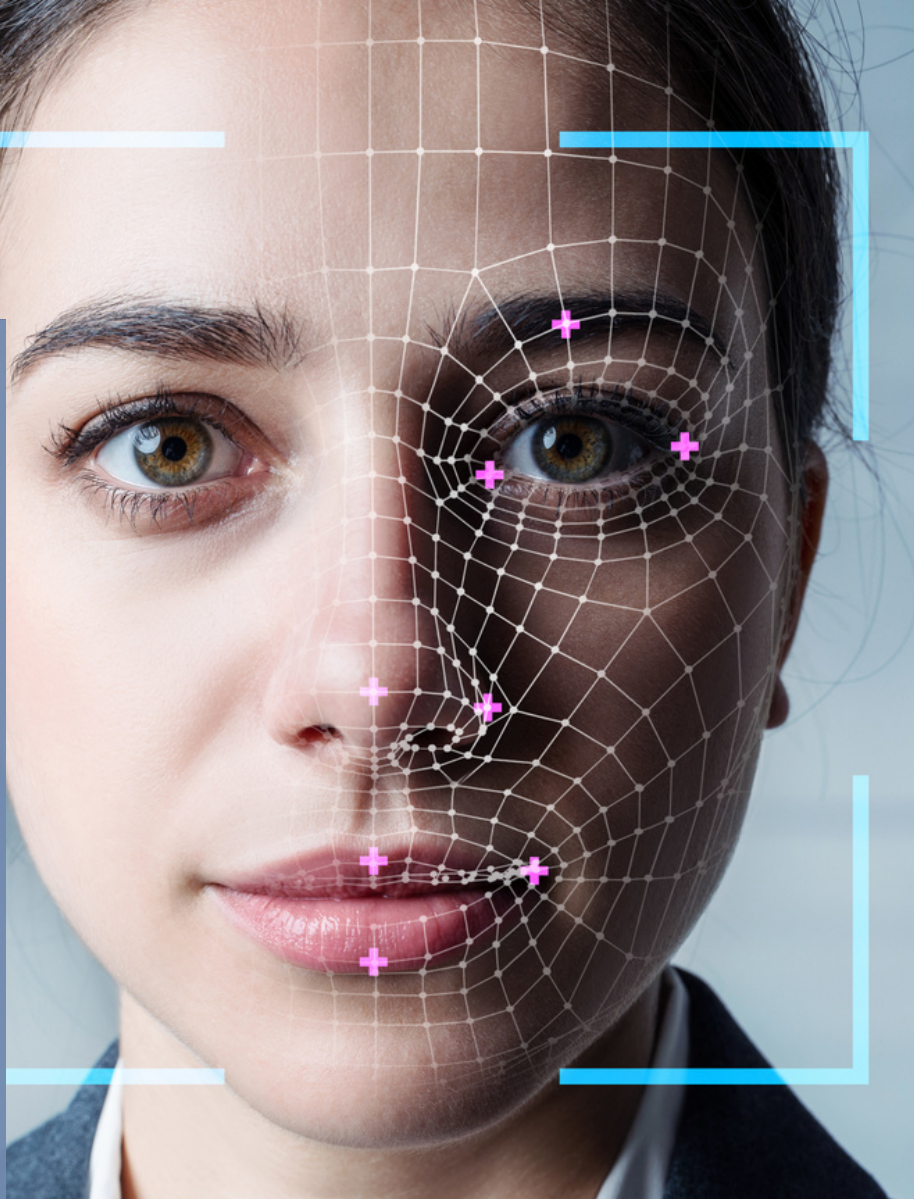


FOCUS

Advanced Facial Recognition Software

Superior identification
results from crime
scene videos



Identify a Person of Interest—Instantly

Crime Investigators need more help than ever before—they have more caseloads, but less time to solve them.

Global's FOCUS Advanced Facial Recognition Software provides the ability to quickly and easily identify suspects.

This leading TAC.10 Evidence tool dramatically improves both the speed and accuracy of facial identification through easy-to-use machine learning software.

FOCUS allows users to easily scroll through videos and hone in on a specific image within seconds.

FOCUS advantages:

- No special training or prior knowledge of video or image manipulation is required.
- Easy-to-use controls.
- Simply create a case file, open a video, and click play.
- Move through the videos quickly, stop on any frame to use for identification.

FOCUS also showcases its power by leveraging advanced image processing functions to refine and enhance the target image and search a database of enrolled mugshots to identify any persons of interest.

Results in Seconds

FOCUS compiles information about a selected face and quickly generates the best image for submission to the face-matching engine. Possible matches return in rank order to review and are saved for historical reference.

Because the process is fast, users can try multiple attempts in a very short time frame, enabling more searches that produce optimal results. The result? Significantly reduce the time investigators spend on identification, allowing them to pursue and develop case leads based on the potential matches FOCUS produces.

How FOCUS Works

A classification algorithm inspects a subject's facial features by measuring head orientation and allows for any optical distortion. FOCUS uses a neural network to translate the face into a digital signature used for matching — and the results are returned with exceptional speed and precision.

Fast Reliable Results

What makes FOCUS a leader in Facial Recognition is its combination of processing power and ease of use. Investigators can even obtain image matches with only a side or masked view. The FOCUS advantage means you get the most accurate results — when you need them.

Key Features

- Accommodates any nonproprietary video or image format used as input
- Matches generated results in seconds with a simple lasso around the subject's face
- Searches activities for easy tracking through the case management module
- Views prior search results with marked favorites
- Shares cases across agencies
- Ensures search optimization for uploaded videos and images
- Filters to transform dark or blurry frames into clear, searchable images
- Integrates with your existing mugshot database

Side View Recognition



Masked Recognition



Contact Global Public Safety Today to Get Started with FOCUS Advanced Facial Recognition

TAC.10 RMS CAD JMS ICM EVIDENCE CIVIL MOBILE

825 N. Broadway, Ste. 400
Oklahoma City, OK 73102

GLOBAL
PUBLIC SAFETY & JUSTICE

405-810-8008
sales@globalsoftwarecorp.com