



The Only Evidence-Based Solution for Corrections Management

# The Benchmark Blueprint™

Benchmark Analytics® was founded by a group of dedicated professionals who have years of experience in public safety. The Benchmark Blueprint incorporates the valuable insights of decades of evidence-based research into law enforcement.

Now, in collaboration with our research partners, thought leaders in corrections, analytic specialists and technology developers, we have created an all-in-one solution to advance corrections workforce management in America — including prisons, jails, juvenile correction/detention centers and other facilities.

## Benchmark Compliance Shield™

We have configured our research-based platforms to help protect corrections agencies from *officer misconduct and exposure to rising liability costs* — along with associated public criticism, media scrutiny and strained community relations.

Our platforms comply with the policies and procedures published by the Commission of Accreditation for Corrections (CAC) of the American Corrections Association (ACA).



As part owner of Benchmark, the University of Chicago is the lead member of our diversified research consortium — and has played a key role by developing a series of predictive models and algorithms that identify patterns of officer conduct that lead to problematic behavior in corrections.

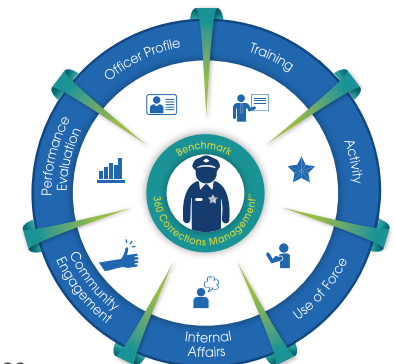


## BMS | Benchmark Management System®

With **BMS**, Benchmark works with you to develop a top-to-bottom corrections management system that:

- Brings together disparate correctional officer data points from all current sources — depending upon type of facility, may also include wardens, supervisors, sheriffs, jail professionals, parole and probation officers, security guards, etc.
- Identifies what data is important to ensure the integrity, appropriate behavior and safety of all correctional personnel
- Delivers an efficient, effective platform created to provide a holistic view of every officer in your department

BMS is a proactive management tool that features *seven integrated modules* designed to identify a wide range of activities, practices and procedures — not simply a system to focus on problematic behavior. Additionally, our system can be configured to incorporate specific, day-to-day operational data points and processes — tailored to the requirements, goals and mission of your facility.



2

## First Sign® Early Intervention

By leveraging the performance data collected in the **Benchmark Management System**, we activated the power of research and advanced analytics to develop **First Sign** — a revolutionary tool that:

- Captures the data most important to officer performance and behavior — as well as the relationships between critical data variables
- Takes into account total productivity relative to signs that an officer may be engaging in problematic behavior
- Proactively notifies you at the “first signs” of a real need to intervene and help an officer who has fallen off track get back on track
- Transforms risk management in policing by significantly reducing your exposure to rising liability costs

**First Sign** is *preventative by design*: Benchmark understands that intervention based upon simple, threshold-based triggers alone is not the most effective strategy — context, patterns of problematic behavior and officer history are what matter most . . . and what make our system better.



3

## C.A.R.E. | Case Action Response Engine®

Once off-track behavior has been identified in **First Sign**, Benchmark expedites thoughtful and effective early intervention with **C.A.R.E.** — a proactive, targeted support program that:

- Features research-based case management modules for officer-specific interventions
- Provides best practices proven to be most effective for different levels of intervention
- Facilitates the planning process with a template of actionable steps and goals

Ultimately, **C.A.R.E.** allows supervisors to develop a well thought out, meaningful plan of action to help officers who have fallen off track get back on track — and out of **C.A.R.E.**



At Benchmark, we are committed to upholding the honor of the badge.



## Discover the Benchmark for Corrections Management and Early Intervention

For more information:

Email request to [info@benchmarkanalytics.com](mailto:info@benchmarkanalytics.com)

To set up a meeting and system demo:

Call 888-40BENCH today — and visit us at

[www.benchmarkanalytics.com](http://www.benchmarkanalytics.com)