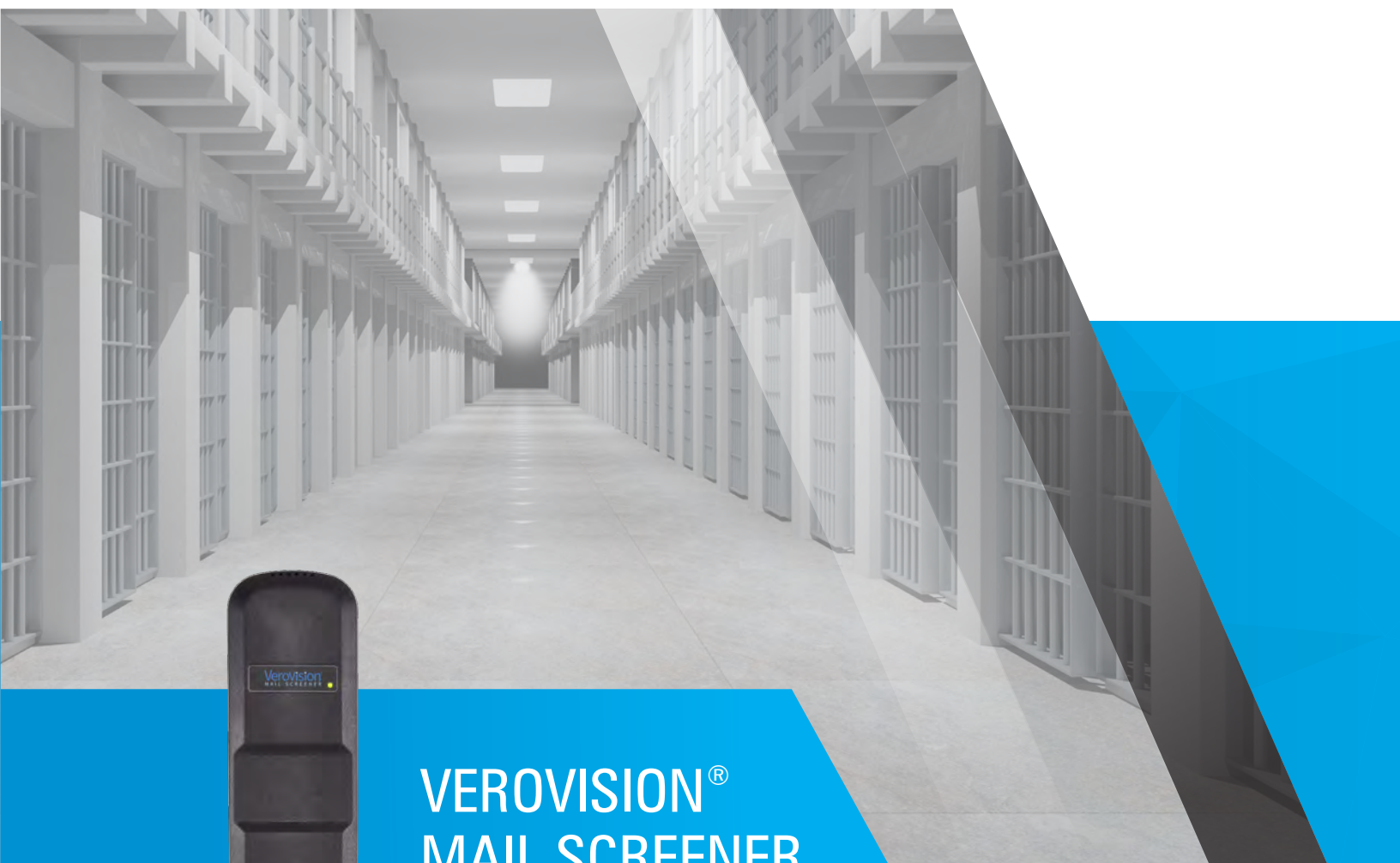


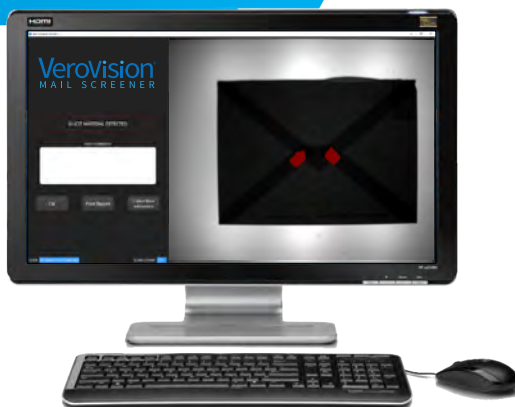
VeroVision[®]
MAIL SCREENER

INTERCEPT DRUGS
CONCEALED IN INMATE MAIL



VEROVISION[®]
MAIL SCREENER

A CHEMIMAGE TECHNOLOGY



A SAFER WORLD | FAST. EASY. OBJECTIVE DETECTION.

ChemImage develops technology for improved detection of threats to increase safety in our communities, and to protect corrections officers, law enforcement, first responder and security personnel in their daily activities.

THE PROBLEM: CONCEALED DRUGS

Many drugs concealed in incoming inmate mail cannot be detected by visual inspection. Illicit materials enter your facility and put your officers and staff at risk. As drugs become more potent, the impact of exposure gets more dangerous and can even result in death. Inmates that have access to drugs are more likely to be aggressive or combative, putting personnel in danger.

NEARLY
65%
OF INMATES
HAVE A DRUG OR
ALCOHOL ADDICTION

Statistics indicate that nearly 65% of inmates have a drug or alcohol addiction. Inmate mail is a common entry point used for smuggling drugs into correctional facilities. Smugglers are getting more creative by hiding drugs under stamps and mixing drugs with ink or crayons.

¹From CASA's 2009 *Shoveling Up II: The Impact of Substance Abuse on Federal, State and Local Budgets* report

Detection Process

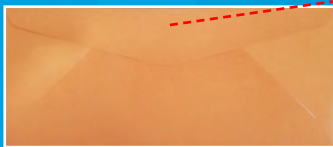
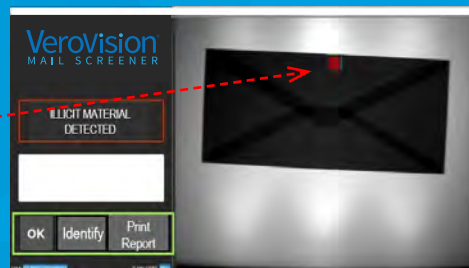
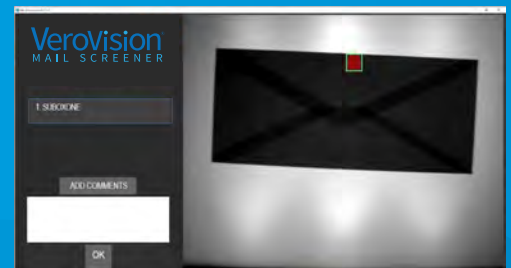


Image of Envelope



Detection of illicit substance, the user can identify the detected materials as well as print a report



Presumptive identification feature names illicit substance: Suboxone®

THE SOLUTION: VEROVISION MAIL SCREENER

Unlike other solutions, VeroVision® Mail Screener allows inmates to receive mail from their loved ones in its original form. Items such as children's drawings and greeting cards may be considered high risk and are often withheld or prohibited, but receiving these items can give the inmate a stronger connection to their support system. Studies have indicated that inmates with a strong connection to a support system are generally happier and have a reduced risk of recidivism.

VeroVision Mail Screener offers correctional facilities a quick and effective method to screen inmate mail for illicit drugs and cutting agents, helping to improve personnel safety and keep drugs out of the inmates' hands.

Help keep your staff safe, while improving rehabilitation success rates for inmates.

Correctional facilities must remain diligent in preventing contraband, including narcotics, from entering the facility through the mailroom.



VeroVision® Mail Screener is an innovative sensor system that can quickly, easily and objectively detect drugs concealed in inmate mail with a high accuracy rate. Unlike other contraband detection methods, VeroVision Mail Screener takes the guesswork out of mail screening. If an illicit material is detected, the Identify function can give the user a Presumptive Identification of the questionable material.

Visual and manual inspection of mail can reveal suspicious looking material or strange markings that are obvious red flags to most inspectors. VeroVision Mail Screener can detect the not-so-obvious presence of illicit material. This 100% safe technology offers a high rate of accuracy and allows for the normal process and flow that mailrooms are currently used to. In the time it takes for visual/manual inspection, the VeroVision Mail Screener can detect and presumptively identify a number of common drugs and cutting agents that would have potentially gone undetected.



One-Click Detection

Allows anyone to quickly scan, detect and presumptively identify concealed illicit material.

- Detects illicit drugs and common cutting agents through envelopes and paper, mixed with marker, crayon, paint and even under stamps and stickers
- Scans mail items in less than 10 seconds
- Updates to new recipes and material signatures as new drug formulations and substances emerge
- Generates official reports with imagery for proper tracking and record keeping
- Follows normal process and flow for facility mailrooms

Product Specifications

Device Type	SWIR Hyperspectral Imaging Device (800-1800 nm)
Optical System	Fixed field-of-view
Field-of-View	12" x 9" (high magnification, 6" x 4.5")
Power Requirements	100-240 VAC, 50-60 Hz
System Dimensions	22.5"W x 23"D x 48"H
System Weight	90lbs (not including workstation)
User Interface	23-inch touchscreen display
Printer	Available as accessory

CURRENT DRUG DETECTION CAPABILITIES:

- Cocaine
- Fentanyl
- Ketamine
- PCP (Phencyclidine)
- Suboxone®
- Methamphetamine
- Caffeine
- Various Cutting Agents
- D-Amphetamine
- Heroin
- Methadone
- Methamphetamine
- Liquid Methamphetamine (sprayed or soaked onto paper)
- Some Synthetic Cannabinoids (sprayed or soaked onto paper)

WHAT IS HYPERSPECTRAL IMAGING? (HSI)

HSI is an extension of digital imaging that acquires many images at different wavelengths. VeroVision technology uses a unique short-wave infrared (SWIR) filter technology to control the wavelength of light that passes through the filter to the detector.

*Interested in learning more about HSI?
Visit www.chemimage.com*

SPRAYS & SOAKS DETECTION CAPABILITY

Is Now Available With VeroVision[®] Mail Screener*

Improve the **HEALTH AND SAFETY** of Correctional Facilities



About

This VeroVision[®] Mail Screener software upgrade allows you to intercept inmate mail that has been sprayed with, or soaked in methamphetamine and certain kinds of synthetic cannabinoids. The new sprays and soaks recipe has shown to help increase detection of sprayed/soaked mail items over human screen alone. It assists the user in providing a means to reject suspicious mail in an unbiased manner.

Features

- ✓ One-click detection
- ✓ Easy-to-use interface
- ✓ 100% safe
- ✓ Non-contact, non-destructive
- ✓ Scan mail items in about 20 seconds
- ✓ Follows normal process and workflow for mailroom facility
- ✓ Generates official reports with imagery

Benefits



Jail Staff & Inmate Safety and Rehabilitation

- Help curb possible unpredictable, dangerous, and aggressive reactions to these drugs
- Limit exposure to harmful substances
- Allows inmates to receive mail in original form to provide them connection to a support system



Provide Valuable Intel

- A detection caught before it gets into an inmate's hands can lead to further discoveries
- Can help lead to the source of the drug smuggler



Reduce Costs

- Overdoses, lawsuits, and healthcare for inmates and staff injured during drug-fueled violence can be costly
- Help reduce or eliminate these unnecessary costs by finding the drugs being smuggled through the mail

MAIL SCREENING HAS GONE *Mobile*

Our new mobile workstation allows correctional facilities to leverage the benefits of the VeroVision® Mail Screener to open and screen legal mail in front of inmates.

LEARN MORE AT

CHEMIMAGE.COM/SAFER/SOLUTIONS/MAIL-SCREENER



Now, you can add a new layer of security to your **legal mail** screening process.



Features

- 50 foot extension cord
- Open shelf space for mail bin/printer/other storage (items not included)
- Built-in mail sorter
- UPS runtime: 30 minutes (operation); 2 hours (standby)
- UPS with optional battery runtime: 2 hours (operation); 8 hours (standby)

ChemImage

Website:
ChemImage.com

Phone:
412-241-7335

Email:
info@chemimage.com

VeroVision Mail Screener is intended for use in accordance with local, state, and federal law. Consult legal counsel to determine how to use the Mail Screener in compliance with relevant regulation and policy. In order to obtain best results, VeroVision Mail Screener must be used according to manufacturer's best practices and guidelines. Certain limitations apply. Contact your ChemImage account manager for additional information.



TECHNOLOGY FOR A SAFER WORLD.

CONTACT

+1 412-241-7335
info@chemimage.com

SECURITY ADDRESS

7325 Penn Ave., Suite 200
Pittsburgh, PA 15208 USA

WEBSITE

www.chemimage.com