

# Resona 7

## Ultrasound System

Lightning Edition

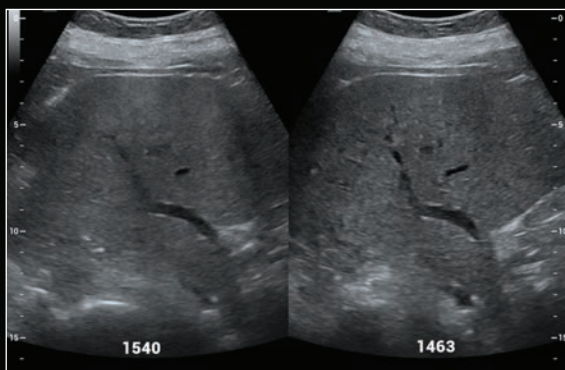


# Get Diagnostic Answers at Lightning Speed

Powered by next generation ZONE Sonography® Technology+ (ZST+), the Resona 7 Ultrasound System Lightning Edition delivers crystal clear imaging capabilities with unrivaled detail resolution and image uniformity across general, vascular, women's health, and shared service imaging applications. The System is designed to address the changing needs of today's value-based care environment and provide clinicians with higher frame rates, decreased motion artifacts, and a precise display of hemodynamics, giving users clear, uniform images – regardless of body habitus. Coupling premium imaging, advanced workflow features, and user-directed ergonomic design, the Resona 7 Lightning Edition propels premium ultrasound imaging into the next generation.

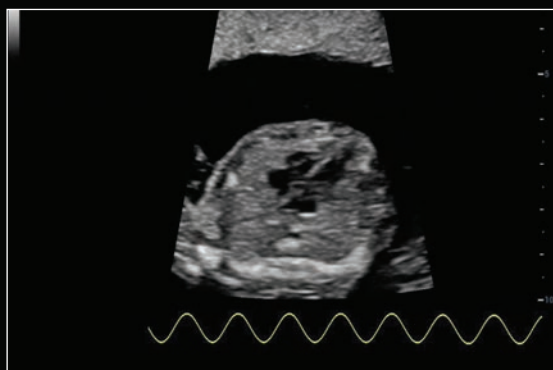
## AI-enhanced Technologies

With a suite of artificial intelligence (AI)-enhanced technologies, the Resona 7 Lightning System helps clinicians improve reproducibility, optimize productivity, and achieve consistency.



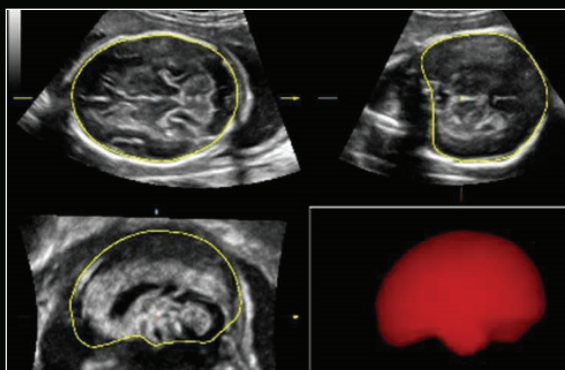
### Sound Speed Compensation (SSC)

Automated detection of sound speed variations improves lateral and contrast resolution and imaging at depth.



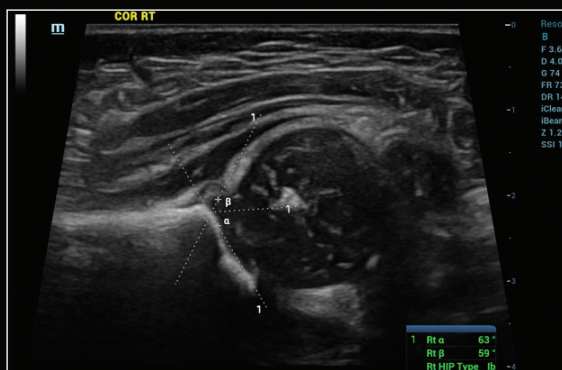
### Smart FHR

Automated fetal heart rate calculations utilizes B-mode echo data to enhance accuracy and reproducibility.



### Smart ICV

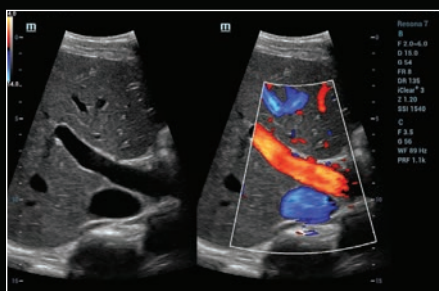
Automated intra-cranial volume (ICV) measurement for the fetal cranium enable efficient and precise calculations.



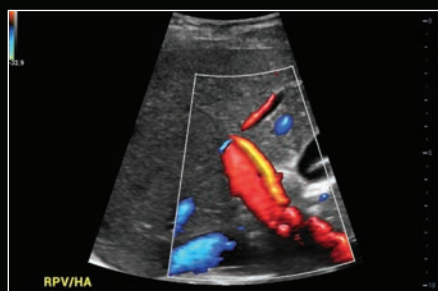
### Smart Hip

Automated neonatal hip detection and calculation facilitate accurate and reliable diagnostic results.

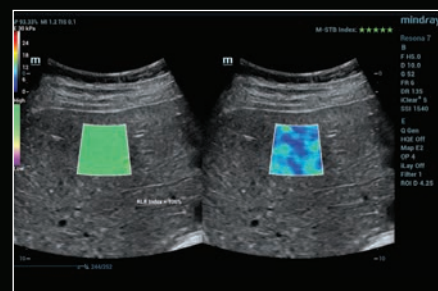
# Clinical Gallery



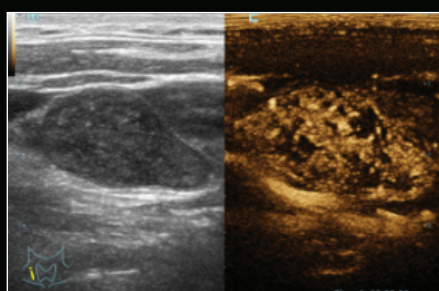
Color Doppler of the Main Portal Vein



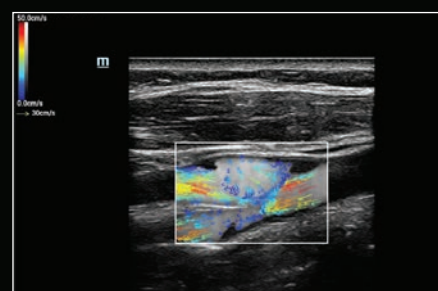
Glazing Flow of the Hepatic Artery



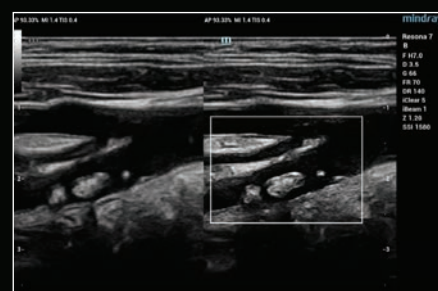
HiFR STE of Normal Liver Tissue



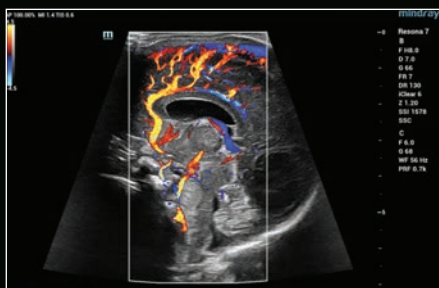
HiFR CEUS of a Superficial Lymph Node



V Flow™ Imaging of the Carotid Bifurcation



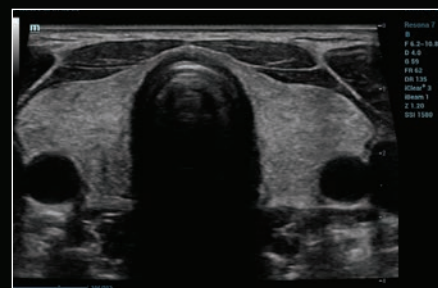
HD Scope of Internal Carotid Artery Plaque



Cranium with HR Flow™, Premature Delivery



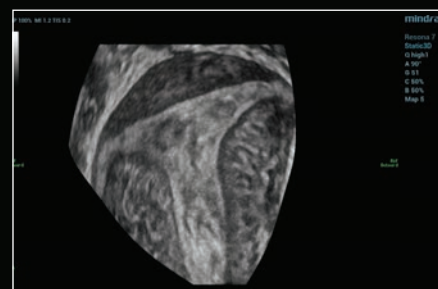
Color Doppler Perfusion of Pediatric Kidney



Extended Field of View of Thyroid Gland



4D Fetal Face and Umbilical Cord



3D Imaging of the Uterine Endometrium



Glazing Flow Displaying Microvasculature of the Kidney



# Ergonomics That Work With You

We believe that careers should not end and the industry should not lose great clinicians due to work-related injuries that proper ergonomics can prevent. With a customizable gesture-powered touch screen, a fully adjustable automated control panel, and articulating monitor, the Resona 7 Lightning System enables intuitive and efficient workflow to enhance user experience.

## Ergonomic Highlights:

1. 21.5" LED monitor with high-resolution
2. 13.3" high-sensitivity anti-glare color touch screen
3. 6-way adjustable floating control panel
4. Onboard lithium battery
5. 5 transducer ports (4 active, 1 inactive)

## Light Up Your Return on Investment

The Industry's Best Investment Protection and Total Cost of Ownership

### Living Technology™

Living Technology is a continually evolving software-based approach to providing our customers with easily upgradeable enhancements made possible by our core imaging technologies. These upgrades secure product investment protection by ensuring that Mindray Ultrasound Systems remain at the cutting-edge of imaging performance throughout their entire life cycle.

### Standard warranty\* includes:

#### Five years of coverage for:

- Main system and parts, and technical phone support Monday-Friday, 8 am–8 pm ET (excluding U.S. holidays)
- Standard transducers (normal wear and failure)
- Software performance updates with Living Technology

#### One year of coverage for:

- Specialty transducers including, but not limited to, TEE and 4D transducers

\* Standard five (5) year warranty is available for systems purchased directly from Mindray North America. Warranties for systems purchased from Mindray authorized agents can vary.



### Mindray North America

800 MacArthur Blvd., Mahwah, NJ 07430

Tel: 800.288.2121 Support: 877.913.9663 Fax: 800.926.4275 [www.mindray.com](http://www.mindray.com)

Mindray® is a registered trademark of Shenzhen Mindray Bio-Medical Electronics Co., Ltd. All brands and product names are trademarks of their respective owners. ©2022 Mindray DS USA, Inc. Subject to change. 01/22 P/N: 0002-08-40571 Rev A

# mindray

healthcare within reach