


Indigo System



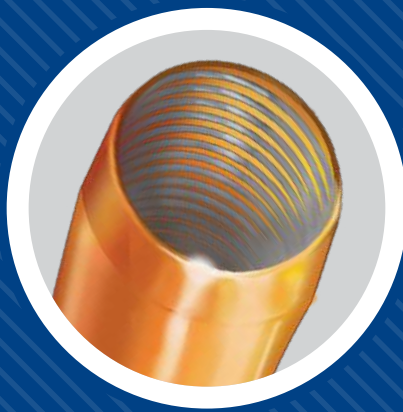
Penumbra 

**Mechanical
Clot Engagement**



**Proprietary Separator
Technology**

**Maximised
Aspiration Power**

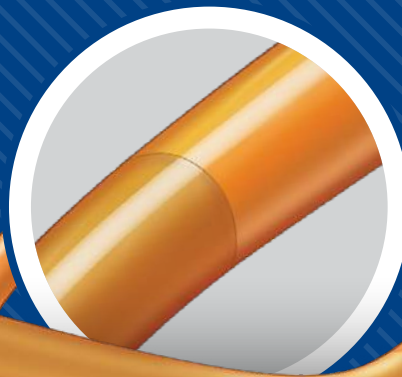


**Large Lumen
Aspiration**

**Tip Directionality for
Circumferential
Aspiration**

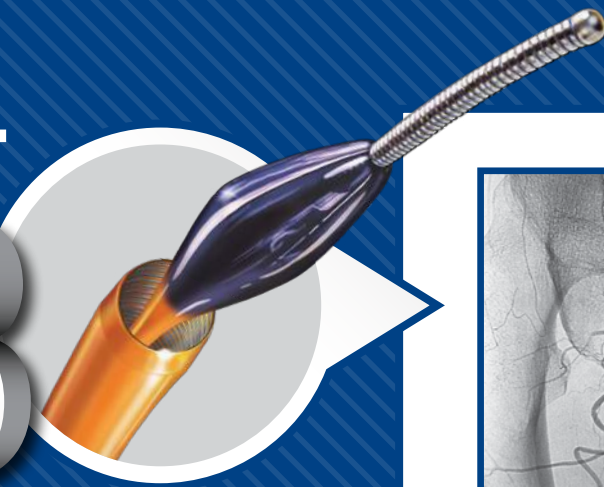


**Advanced
Tracking Technology**

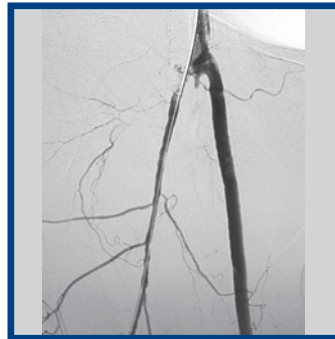
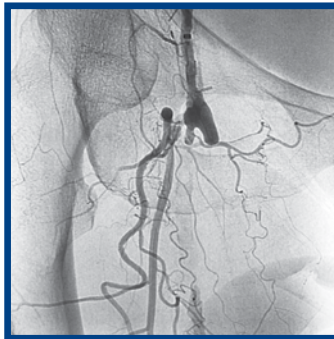


**Multiple Material
Transitions**

**CAT
8**



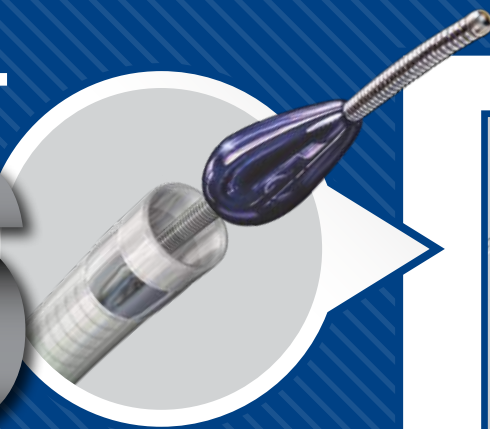
Arterial and venous clot in larger vessels where power aspiration is desired



Aspiration of Thrombus from Occluded Fem-Pop Graft

Dr. Corey Teigen, Sanford Health, ND, USA

**CAT
6**



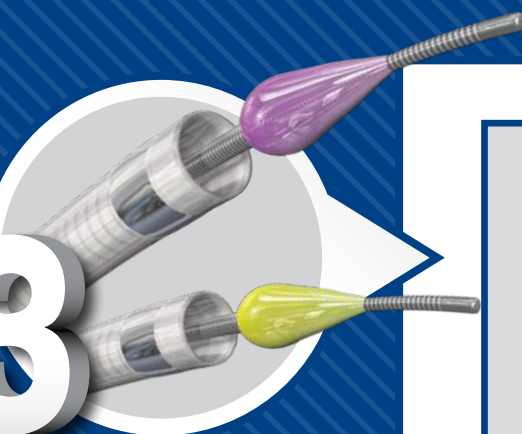
Arterial clot in larger arteries including SFA, popliteal and viscerals



Aspiration of Thrombus from Popliteal Artery

Dr. Frank Arko, Atrium Health, NC, USA

**CAT
5
& 3**

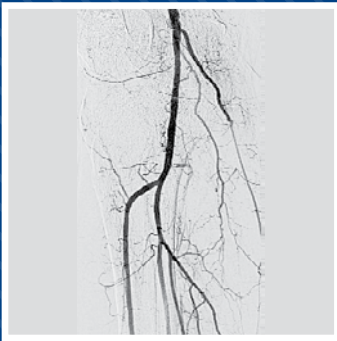


Smaller, distal reach for upper and lower arterial extremities cases

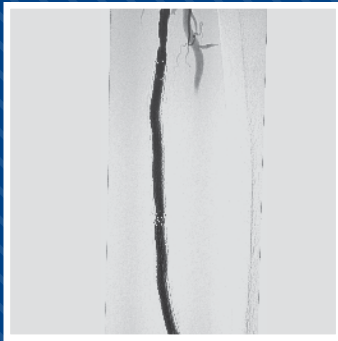
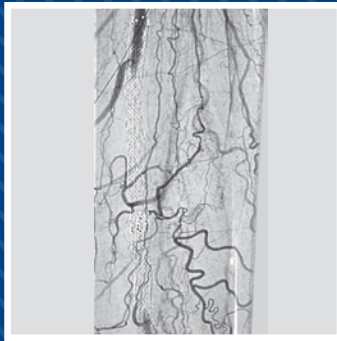


Aspiration of Thrombus from Anterior Tibial

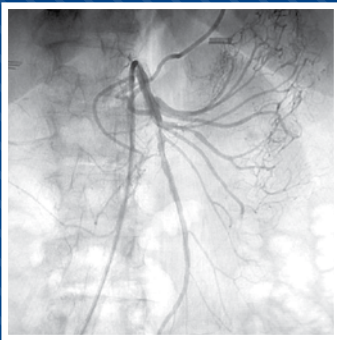
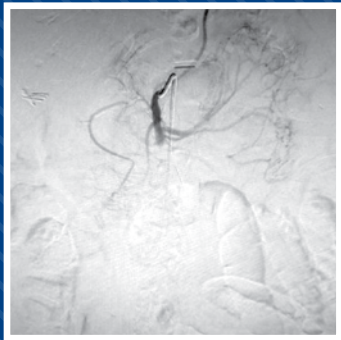
Dr. Florian Wolf, Allgemeines Krankenhaus der Stadt Wien, Vienna, Austria



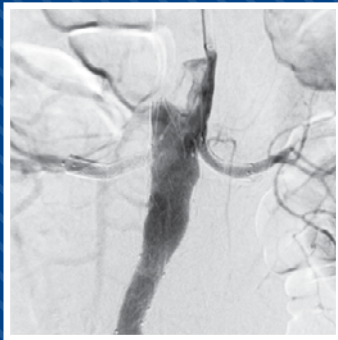
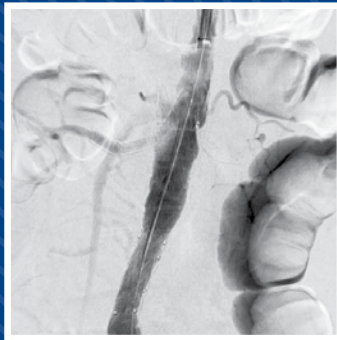
Aspiration of Thrombus from Tibial-Peroneal Trunk
Dr. Maria Antonella Ruffino, Città della Salute e della Scienza di Torino, Italy



Aspiration of Thrombus from SFA Stent
Dr. George Adams, REX/UNC Healthcare, NC, USA



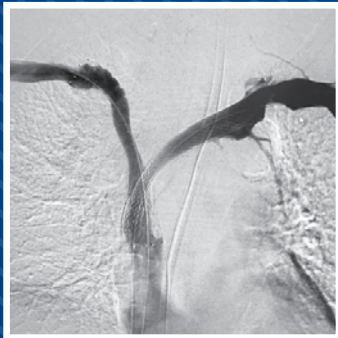
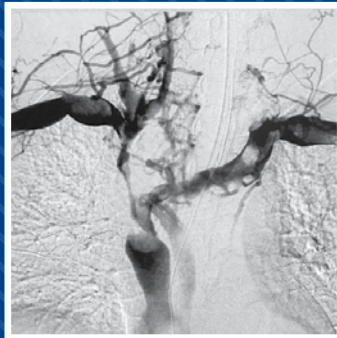
Aspiration of SMA Embolus
Drs. Rahul Patel & Robert Lookstein, Mount Sinai Hospital, NY, USA



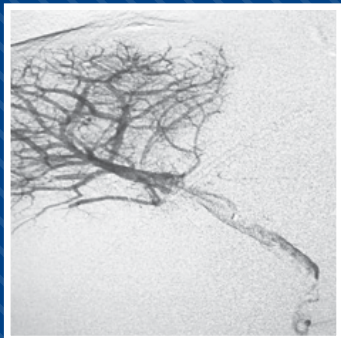
Renal Artery Occlusion Post Chimney Endograft
Dr. Theodosios Bisdas, St. Franziskus-Hospital, Münster, Germany



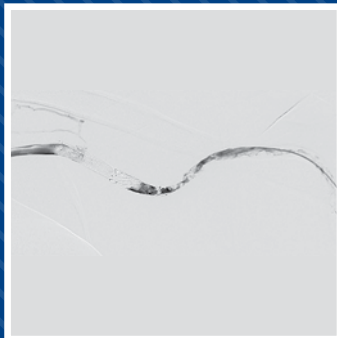
Aspiration of Thrombus from Iliofemoral Vein
Dr. Jos C. van den Berg, Ospedale Regionale di Lugano, Lugano, Switzerland



Aspiration of Central Venous Occlusion
Dr. Timothy Yates, Mount Sinai Medical Center, FL, USA

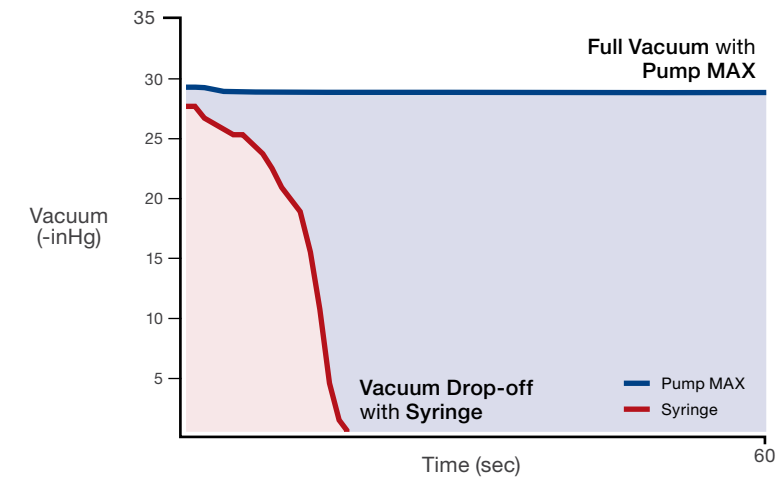


Aspiration of Thrombus from Portal Vein
Dr. Rafik Lababidi, Largo Medical Center, FL, USA



Aspiration of Thrombus from Hemodialysis Access Graft
Drs. Yann Le Bras & Francois Petitpierre, Groupe Hospitalier Pellegrin, Bordeaux-Cedex, France

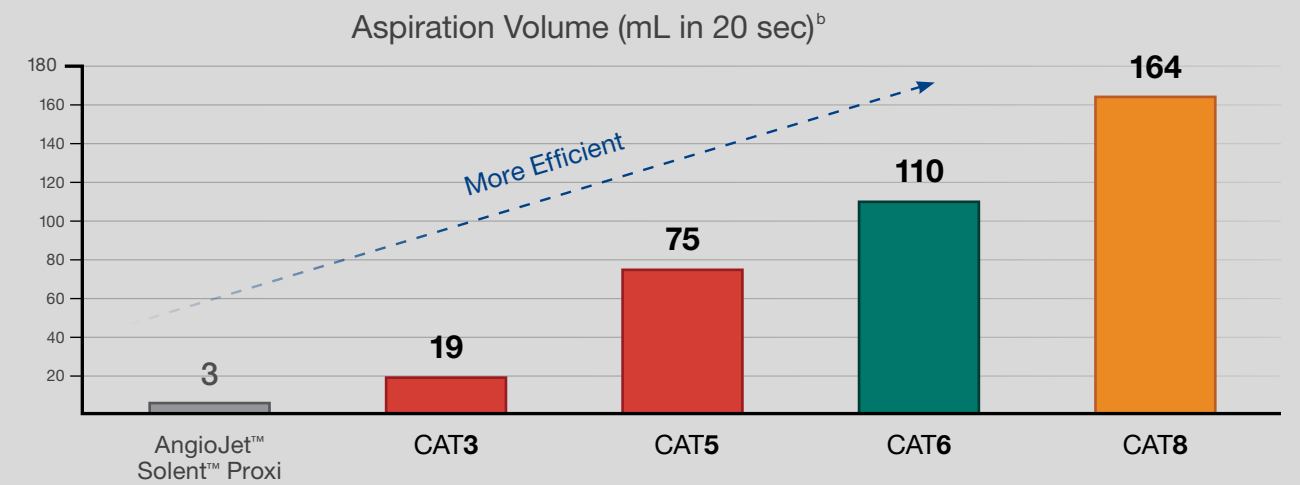
Full Vacuum^a



a. Tests performed and data on file at Penumbra, Inc. Bench test results may not be indicative of clinical performance.

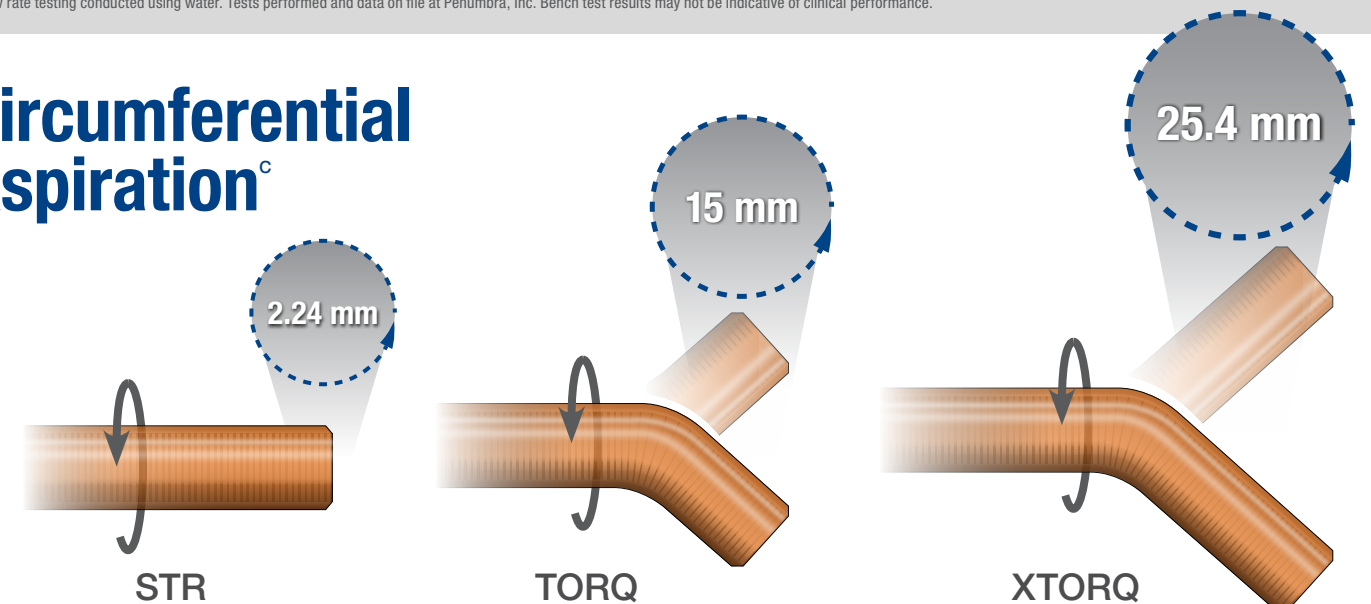


Power Aspiration

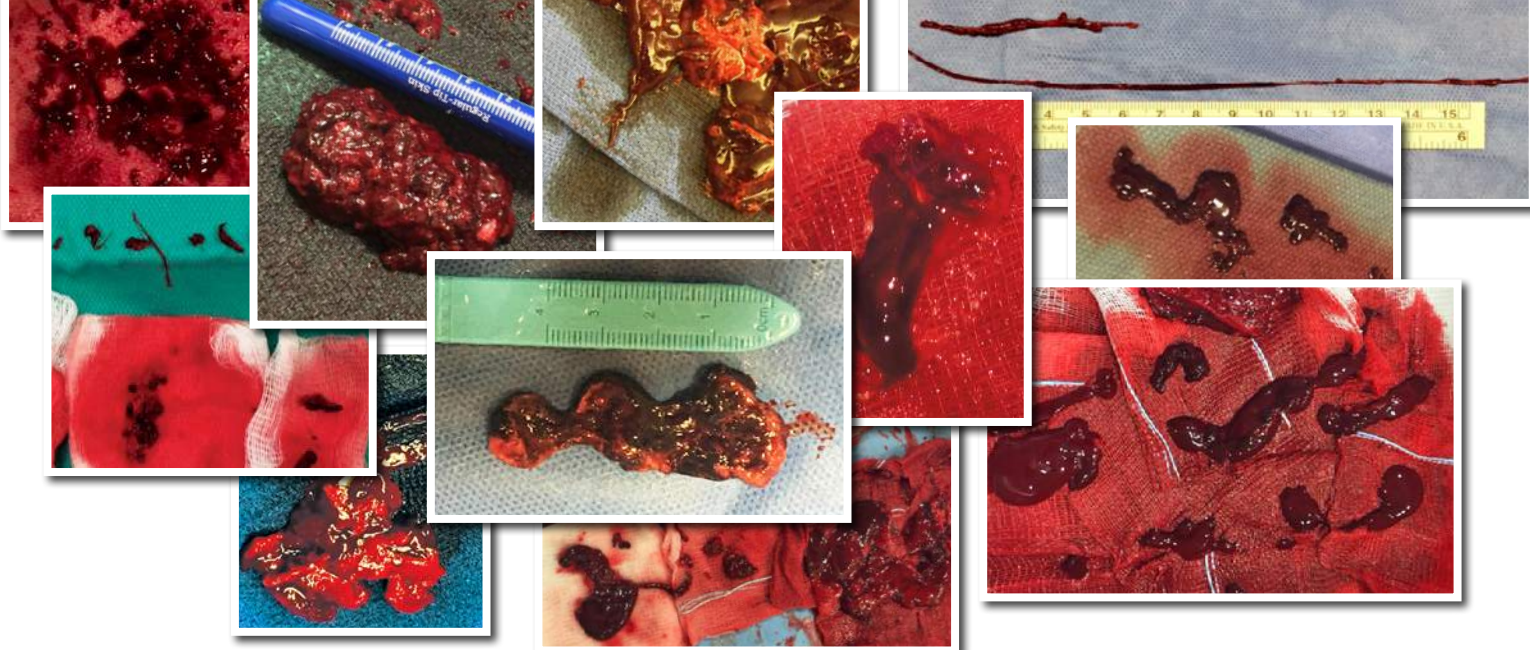


b. AngioJet™ setup tested with its own accessories and aspiration source per its Instructions for Use. Indigo System setup tested with its own accessories and aspiration source per its Instructions for Use. Flow rate testing conducted using water. Tests performed and data on file at Penumbra, Inc. Bench test results may not be indicative of clinical performance.

Circumferential Aspiration^c



c. Measurement calculated using tip angle and length.



Ordering Information

Catalog Number	Description	Proximal OD	Distal OD	Length	Compatible Penumbra Devices
Indigo Catheters				Working	
CAT8XTORQ115	Indigo 8 XTorq Tip	8.0 F	8.0 F	115 cm	Separator 8
CAT8TORQ85	Indigo 8 Torq Tip	8.0 F	8.0 F	85 cm	Separator 8
CAT8STR85	Indigo 8 Straight Tip	8.0 F	8.0 F	85 cm	Separator 8
CAT6	Indigo 6	6.0 F	6.0 F	135 cm	Separator 6
CAT5	Indigo 5	6.0 F	5.0 F	132 cm	Separator 5
CAT3	Indigo 3	4.1 F	3.4 F	150 cm	Separator 3
Indigo Separators				Total	
SEP8	Separator 8	n/a	.072"	150 cm	CAT8
SEP6	Separator 6	n/a	.055"	175 cm	CAT6
SEP5	Separator 5	n/a	.045"	175 cm	CAT5
SEP3	Separator 3	n/a	.028"	190 cm	CAT3
Accessories					
PMX110	Pump MAX 110V				MAX Canister
IAPS2	MAX Canister				Pump MAX
IST3	Large Lumen Aspiration Tubing				All Indigo Catheters

Prior to use, please refer to the Instructions for Use for complete product indications, contraindications, warnings, precautions, potential adverse events, and detailed instructions for use.

Indigo Aspiration System – Intended Use

The Indigo Aspiration System is intended for the removal of fresh, soft emboli and thrombi from vessels of the peripheral arterial and venous systems using continuous aspiration.

Potential Adverse Events

Possible complications include, but are not limited to, the following: allergic reaction and anaphylaxis from contrast media; acute occlusion; air embolism; arteriovenous fistula; death; device malfunction; distal embolization; emboli; false aneurysm formation; hematoma or hemorrhage at access site; inability to completely remove thrombus; infection; hemorrhage; ischemia; kidney damage from contrast media; neurological deficits including stroke; vessel spasm, thrombosis, dissection, or perforation; intimal disruption; myocardial infarction; emergent surgery; fibrillation; hypotension; respiratory failure; peripheral thromboembolic events.

Penumbra Pump MAX – Intended Use

The Penumbra Pump MAX is intended as a vacuum source for the Penumbra Aspiration Systems.



Penumbra, Inc. USA
One Penumbra Place
Alameda, CA 94502
USA
1.888.272.4606
T 1.510.748.3200
F 1.510.748.3232
order@penumbrainc.com
info@penumbrainc.com

Penumbra Europe GmbH
Am Borsigturm 44
13507 Berlin
Germany
T +49 30 2005 676-0
F +49 30 2005 676-10
de-order@penumbrainc.com
info@penumbrainc.de

Penumbra Neuro Australia Pty Ltd
Suite 3, Level 5, 1 Oxford Street
Darlinghurst NSW 2010
Australia
T +61-1300 817 025
F +61-1300 817 026
order.anz@penumbrainc.com

Product availability varies by country. Images used with permission. Consents on file at Penumbra, Inc. Tests performed and data on file at Penumbra, Inc. Bench test results may not be indicative of clinical performance. Please contact your local Penumbra representative for more information.

Copyright ©2017–2018 Penumbra, Inc. All rights reserved. The Penumbra P logo, Indigo, Separator, and MAX are registered trademarks or trademarks of Penumbra, Inc. in the USA and other countries. All other trademarks are the property of their respective owners.

11744, Rev. B 12/18 CA