

# Plant-Based, Organic Nutrition

*Made for Tolerance™*  
to help kids  
*grow and thrive*



#1 RECOMMENDED  
Plant-Based Formula\*

- ✓ Designed to support healthy growth and development
- ✓ Made for Tolerance™
- ✓ Quality, science-backed ingredients

*The Only*  
**ONE**  
*of Its Kind*

katefarms®

\* Independent data report on plant-based formula distributor volume in home care, acute care, and long-term care. Applies to all Kate Farms® formulas.

# The Kate Farms® *difference*

Plant-based, organic nutrition. **Made for Tolerance™** to help kids *grow* and *thrive*.

#1 **RECOMMENDED**  
Plant-Based Formula\*

## Designed to support healthy growth & development

Values in table are per carton.



		PediaSure® Grow & Gain†	Boost® Kid Essentials™†
<b>FORMULA DESIGNED TO SUPPORT HEALTHY GROWTH &amp; DEVELOPMENT</b>	✓ YES	Yes	Yes
<b>CALORIES</b>	✓ 300	240	240
<b>PROTEIN</b>	✓ 12 g HIGH QUALITY PLANT-BASED PEA PROTEIN	7 g	7 g
<b>FIBER</b>	✓ 3 g FIBER	<1 g†; 1 g§; 3 g	0 g
<b>MEETS OR EXCEEDS 100% OF THE DRIs FOR PROTEIN AND 25 ESSENTIAL VITAMINS AND MINERALS</b>	✓ 875 mL FOR 1-8 YEARS 1400 mL FOR 9-13 YEARS	1000 mL for 2-8 years 1500 mL for 9-13 years	1000 mL for 1-8 years 1500 mL for 9-13 years



**Kate Farms is clinically demonstrated to support tolerance, weight gain, and adherence<sup>1</sup>**

\* Independent data report on plant-based formula distributor volume in home care, acute care, and long-term care. Applies to all Kate Farms formulas.

† PediaSure® Grow & Gain Vanilla, PediaSure® Grow & Gain Chocolate, PediaSure® Grow & Gain with Fiber Vanilla, PediaSure® Grow & Gain with Fiber Chocolate, Boost® Kid Essentials™ 1.0 Vanilla, and Boost® Kid Essentials™ 1.0 Chocolate used for comparison. These are trademarks of entities unrelated to Kate Farms. PediaSure® Grow & Gain and Boost® Kid Essentials™ are available in 237 mL cartons. Product information accessed March 2022 from manufacturer product guides, websites, marketing literature, and product packaging.

‡ PediaSure® Grow & Gain Vanilla.

§ PediaSure® Grow & Gain Chocolate.

|| PediaSure® Grow & Gain with Fiber Vanilla and Chocolate.

**katefarms®**

# The Kate Farms® *difference*

Plant-based, organic nutrition. *Made for Tolerance™* to help kids *grow* and *thrive*.

#1 RECOMMENDED  
Plant-Based Formula\*

*Made for Tolerance™*



		PediaSure® Grow & Gain†	Boost® Kid Essentials™†
EASILY DIGESTED ORGANIC PEA PROTEIN‡	✓ YES	No	No
PREBIOTIC FIBER FOR GUT MICROBIOME SUPPORT²	✓ ORGANIC AGAVE INULIN	No fiber listed§  ; Short-chain FOS¶	No fiber listed
NO COMMON ALLERGENS SUCH AS MILK, EGGS, FISH, SHELLFISH, TREE NUTS, PEANUTS, WHEAT, OR SOYBEANS	✓ YES	Contains milk & soy	Contains milk
NO CORN	✓ YES	Corn maltodextrin	Not listed
LOW OSMOLALITY THAT MAY SUPPORT GI TOLERANCE (mOsm/kg WATER)	✓ 300 (VANILLA) 320 (CHOCOLATE)	465§; 525	475
ORGANIC MCT OIL FOR EASY FAT ABSORPTION	✓ MCT:LCT RATIO 40:60	No MCT added	No MCT added
TASTES GREAT	✓ NATURAL ORGANIC VANILLA & CHOCOLATE FLAVORS	Natural & artificial flavors	Natural flavor



Kate Farms is clinically demonstrated to support tolerance, weight gain, and adherence¹

\* Independent data report on plant-based formula distributor volume in home care, acute care, and long-term care. Applies to all Kate Farms formulas.

† PediaSure® Grow & Gain Vanilla, PediaSure® Grow & Gain Chocolate, PediaSure® Grow & Gain with Fiber Vanilla, PediaSure® Grow & Gain with Fiber Chocolate, Boost® Kid Essentials™ 1.0 Vanilla, and Boost® Kid Essentials™ 1.0 Chocolate used for comparison. These are trademarks of entities unrelated to Kate Farms. PediaSure® Grow & Gain and Boost® Kid Essentials™ are available in 237 mL cartons. Product information accessed March 2022 from manufacturer product guides, websites, marketing literature, and product packaging.

‡ Contains all 9 essential amino acids from pea protein with added L-cysteine to provide a Protein Digestibility Corrected Amino Acid Score (PDCAAS) of 1.0.

§ PediaSure® Grow & Gain Vanilla.

|| PediaSure® Grow & Gain Chocolate.

¶ PediaSure® Grow & Gain with Fiber Vanilla and Chocolate.

katefarms®

# The Kate Farms® *difference*

Plant-based, organic nutrition. *Made for Tolerance™* to help kids *grow* and *thrive*.

#1 **RECOMMENDED**  
Plant-Based Formula\*

## Quality, science-backed ingredients



		PediaSure® Grow & Gain†	Boost® Kid Essentials™†
CERTIFIED USDA ORGANIC AND NON-GMO PROJECT VERIFIED	✓ YES	No	No
ORGANIC PHYTONUTRIENT BLEND DESIGNED TO IMPROVE MARKERS OF OXIDATIVE STRESS <sup>3,4</sup>	✓ YES	No phytonutrient blend added	No phytonutrient blend added
PLANT-BASED ALA OMEGA-3	✓ <b>ORGANIC FLAXSEED OIL</b> <b>OMEGA-6 TO OMEGA-3 RATIO 2.5:1</b>	Blend of vegetable oils Not listed	Canola oil 12:1
NO NON-NUTRITIVE SWEETENERS	✓ YES	No: Stevia leaf extract	Yes
NO ARTIFICIAL SWEETENERS, FLAVORS, COLORS, PRESERVATIVES, OR CARRAGEENAN	✓ YES	Natural & artificial flavors; carrageenan	Carrageenan



**Kate Farms is clinically demonstrated to support tolerance, weight gain, and adherence<sup>1</sup>**

\* Independent data report on plant-based formula distributor volume in home care, acute care, and long-term care. Applies to all Kate Farms formulas.

† PediaSure® Grow & Gain Vanilla, PediaSure® Grow & Gain Chocolate, PediaSure® Grow & Gain with Fiber Vanilla, PediaSure® Grow & Gain with Fiber Chocolate, Boost® Kid Essentials™ 1.0 Vanilla, and Boost® Kid Essentials™ 1.0 Chocolate used for comparison. These are trademarks of entities unrelated to Kate Farms. PediaSure® Grow & Gain and Boost® Kid Essentials™ are available in 237 mL cartons. Product information accessed March 2022 from manufacturer product guides, websites, marketing literature, and product packaging.

**katefarms®**

# Kate Farms® formulas: *Plant-based* and clinically proven

#1 **RECOMMENDED**  
Plant-Based Formula\*

Kate Farms formulas are clinically demonstrated to improve tolerance, weight gain, and adherence in pediatric patients.<sup>1</sup>

Pediatric patients who switched to Kate Farms (n=159)  
reported improved tolerance, weight gain, and adherence:†

## Tolerance

- ↓ 45% Bloating
- ↓ 43% Constipation
- ↓ 44% Vomiting
- ↓ 35% Diarrhea

Reduced GI symptom frequency

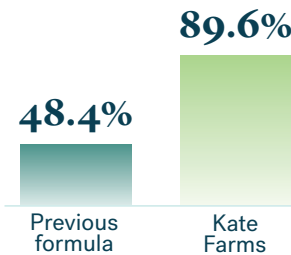
## Weight Gain



90.6%

Gained or maintained weight

## Adherence



Improved adherence‡

The First Plant-Based Formula to Demonstrate  
Weight Gain and Improved Tolerance in Children<sup>5</sup>

Pediatric patients who switched to Kate Farms:

## Weight Gain



86% of patients had improved  
weight-for-age z-scores§

## Tolerance



90% of parents reported improved  
tolerance compared to their  
child's previous formula||

\* Independent data report on plant-based formula distributor volume in home care, acute care, and long-term care. Applies to all Kate Farms formulas.

† Formulas included in the study were Kate Farms Pediatric Standard 1.2, Standard 1.0, Pediatric Peptide 1.5, and Peptide 1.5.

‡ Adherence defined as consuming ≥75% of the formula prescribed.

§ For those patients <21 years old with a documented weight-for-age z-score (n=7), six showed improvement.

|| Tolerance questionnaires were completed for 10 patients: 90% of caregivers agreed that their child tolerated the plant-based formula better than their previous regimen.

katefarms®



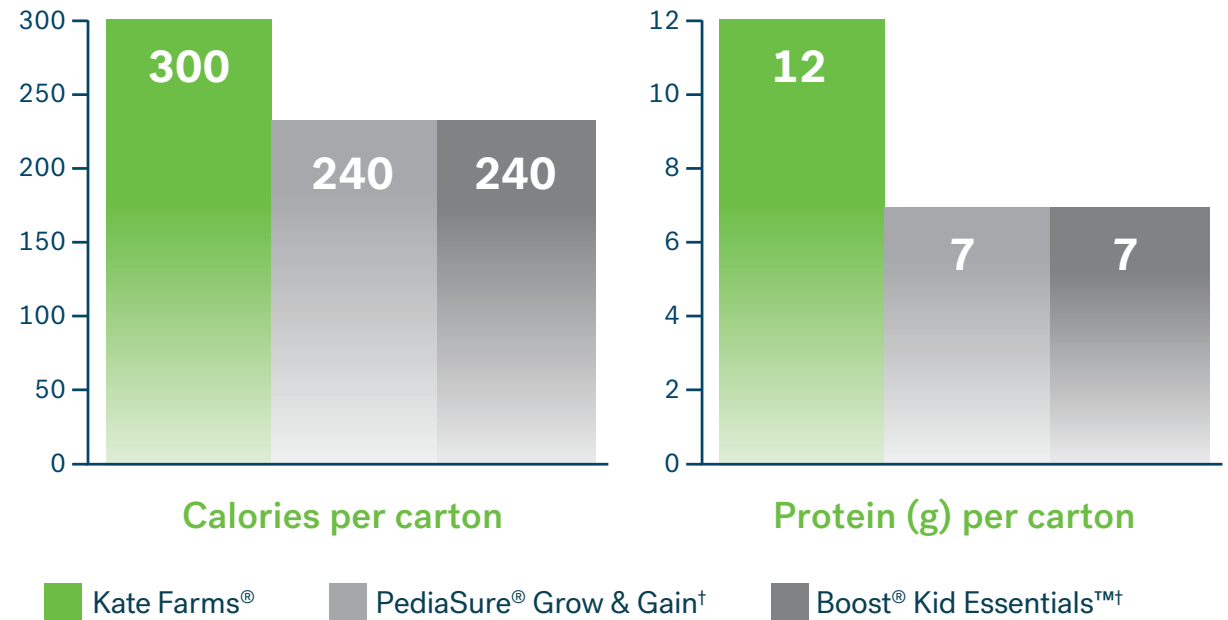
# Kate Farms® formulas: *Plant-based* and clinically proven

#1 RECOMMENDED  
Plant-Based Formula\*



Scan the code to  
read our research

## See the Kate Farms Difference



\* Independent data report on plant-based formula distributor volume in home care, acute care, and long-term care. Applies to all Kate Farms formulas.

† PediaSure® Grow & Gain and Boost® Kid Essentials™ are available in 237 mL cartons. Product information accessed March 2022 from manufacturer product guides, websites, marketing literature, and product packaging.

katefarms®

# Recommend Kate Farms® for Your Patients

#1 RECOMMENDED  
Plant-Based Formula\*

#1 RECOMMENDED  
1.5 kcal/mL Peptide†



Product	Kate Farms Pediatric Standard 1.2 Vanilla & Chocolate	Kate Farms Pediatric Peptide 1.0 Vanilla	Kate Farms Pediatric Peptide 1.5 Vanilla & Plain
HCPCS	B4160 Intact Protein, Pediatric	B4161 Hydrolyzed Protein, Pediatric	B4161 Hydrolyzed Protein, Pediatric
In the same formula category	PediaSure® Grow & Gain Boost® Kid Essentials™	Peptamen Junior® PediaSure® Peptide	Peptamen Junior® PediaSure® Peptide

### Easy to Use

- Sole source or supplemental nutrition
- Oral or tube feeding



### Nationally Available

- Hospitals and home care
- [katefarms.com](https://katefarms.com)
- [amazon.com](https://amazon.com)



### Eligible for Insurance Coverage

- Medicare
- Private plans
- Medicaid
- Select WIC† programs

Kate Farms® is a registered trademark of Kate Farms, Inc. The names and logos of third party products and companies used are the property of their respective owners and may also be trademarks.

**katefarms®**  
**Kate Farms, Inc.**  
101 Innovation Place  
Santa Barbara, CA 93108  
O 805.845.2446 F 805.832.6119



**Request  
Samples**

[katefarms.com/samples](https://katefarms.com/samples)



**Download  
the App**

## Kate Farms® Pediatric Standard 1.2

- ✓ **Designed to support healthy growth and development**
  - 300 calories
  - 12 g high quality plant-based pea protein
  - 3 g fiber
  - Meets or exceeds 100% of the DRIs for protein and 25 essential vitamins & minerals
  - Clinically demonstrated to support tolerance, weight gain, and adherence<sup>1</sup>
- ✓ **Made for Tolerance™**
  - Easily digested organic pea protein<sup>§</sup>
  - Organic agave inulin as a source of prebiotic fiber for gut microbiome support<sup>1</sup>
  - No common allergens
  - No corn
  - Organic MCT oil for easy fat absorption
  - Low osmolality that may support GI tolerance
  - Tastes great
- ✓ **Quality, science-backed ingredients**
  - Certified USDA Organic and Non-GMO
  - Organic phytonutrient blend designed to improve markers of oxidative stress<sup>3,4</sup>
  - Plant-based ALA Omega-3 from organic flaxseed oil
  - No non-nutritive sweeteners
  - No artificial sweeteners, flavors, colors, preservatives, or carrageenan

\* Independent data report on plant-based formula distributor volume in home care, acute care, and long-term care. Applies to all Kate Farms formulas.  
† Independent data report on plant-based formula distributor volume in home care, acute care, and long-term care, per 100 kcal prescribed.  
‡ WIC is a trademark of the U.S. Department of Agriculture and an abbreviation of the Special Supplemental Nutrition Program for Women, Infants, and Children. No endorsement of any brand or product by the USDA is implied or intended.  
§ Contains all 9 essential amino acids from pea protein with added L-cysteine to provide a Protein Digestibility Corrected Amino Acid Score (PDCAAS) of 1.0.  
**References:** 1. Cohen SA, Newman D, Ramirez A, Millovich V. Patient-Reported Outcomes of GI Symptoms and Adherence Among Pediatric Patients Using a Pea Protein Plant-Based Enteral Formula. *JPGN*. 2020;71(Suppl1):S454-456. 2. Holscher HD et al. *Food & Function*. 2014;5(6):1142-1149. 3. Nemzer BV et al. *Food Science and Nutrition*. 2014;2(6):828-839. 4. Nemzer B et al. *Food Science and Nutrition*. 2014;2(6):647-654. 5. Cohen SA et al. Improved GI tolerance and weight gain in pediatric patients using plant-based enteral formulas. *JPEN*. 2020;44(3):274.