

Store Brand Formula Product Information



For U.S. Healthcare Professionals



Perrigo
MAKERS OF ALL
STORE BRAND INFANT FORMULA



Nutrición e Instrucciones en Español:
StoreBrandFormula.com/espanol

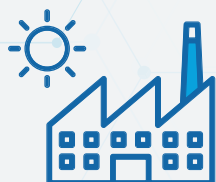
Makers of ALL U.S. Store Brand Infant Formulas



All infant formula sold in the USA is required to meet the same **FDA quality manufacturing and nutritional standards**, ensuring complete nutrition for infants.



All families deserve access to **quality, affordable, and complete** infant nutrition.



Portfolio includes a variety of routine & tolerance formulas manufactured in FDA-inspected facilities in the **USA**.

Perrigo®
MAKERS OF ALL
STORE BRAND INFANT FORMULA

National Brand...

ROUTINE



TOLERANCE



HYPOALLERGENIC



...Compare to the nutrition of our Store Brand

Page Number



Infant

6 - 7



Advantage Premium™

8 - 9



Kirkland Signature™
Procure™

10 - 11



Gentle®

12 - 13



Sensitivity Premium™

14 - 15



Complete Comfort
Premium™

16 - 17



Soy

18 - 19



Added Rice Starch

20 - 21



Hypoallergenic

22 - 23



Who is Perrigo?

Perrigo Company plc is dedicated to making lives better by bringing “Quality, Affordable Self-Care Products™” that consumers trust everywhere they are sold. Beginning in 1887, Perrigo has built a unique business as the 2nd largest provider of over-the-counter (“OTC”) health and wellness solutions, which are primarily found in the USA under the store brand labels across categories including digestive health, analgesics, allergy cough/cold, personal care and more.

Additionally, Perrigo is the 3rd largest manufacturer of infant formula for the USA, and only supplier of infant formula for the store brand market.

About Store Brand Infant Formula

Perrigo is the private label manufacturer behind all U.S. store brand infant formulas. Since 1997, store brand formulas have been trusted by pediatricians, parents, and leading retailers, including Walmart, Sam’s Club, Costco, and Target. These stores sell store brand formulas under their own labels to caregivers across the country. Today, Perrigo produces a variety of routine and tolerance formulas to meet the needs of infants. These include milk-based, soy-based, partially hydrolyzed, reduced lactose, hypoallergenic and added rice starch infant formulas.

Just like their name-brand counterparts, store brand formulas provide complete infant nutrition needed for growth and development. The FDA strictly governs the nutrition for all infant formula sold in the U.S., including specifying content of 29 nutrients, as well as packaging and labeling. Additionally, all infant formula manufacturers are required by the FDA to follow the same quality control procedures and analyze each batch of formula for required nutrients.

All store brand powdered formulas are manufactured in FDA inspected facilities in the U.S.A., and our dairy ingredients are sourced from leading dairy markets, including the United States, Canada, and New Zealand. In fact, many of the ingredients found in U.S. infant formulas are sourced from the same suppliers and made by a similar process. In addition to the FDA and our own internal quality checks, many of our retail partners require regular quality inspections of our facilities throughout the manufacturing and supply chain process. Afterall, it is their name placed on the product.

Why Store Brand Infant Formula is the Right Solution for Many Families

Should formula supplementation be needed, Perrigo believes everyone should have access to quality, affordable and complete infant nutrition. Infant formula can be very expensive. During the last four years alone, name-brand prices have risen by over 5%, which means it can cost families more than \$1,350³ each year to feed their new baby. Perrigo provides affordable, complete nutrition for all babies. By educating parents about store brand infant formula, pediatric providers like you can help families save up to 44% compared to the nationally advertised brands, without compromising complete nutrition.³

Help Your Families Stretch their Paycheck, Not Their Formula

Breastfeeding is best for babies. There’s no question. Infant formula is the only safe alternative, and according to the Centers for Disease Control, 75% of babies receive at least some formula by six months of age. Research has shown that 99% of pediatricians have had families express concerns about the cost of infant formula⁴, with 27% of food-insecure families reporting stretching, diluting or limiting formula to make it last.⁵ WIC* and SNAP** help support millions of families across the country by providing free infant formula or money to purchase necessities, but many don’t qualify or will still run out of benefits before the end of the month. As their pediatrician, parents rely on your expertise and guidance when it comes to the health and safety of their babies, so it’s important to provide all available options. Help your families stretch their paycheck, not their formula, and consider store brand formula.



Your families can get a 9 day supply for free, after rebate!¹⁵

Help your patients trial complete nutrition with everyday savings by giving a \$20 rebate to all your formula feeding families. To learn more and request a rebate kit to help your patients try it for free, visit PerrigoPediatrics.com/FormulaCompare

Perrigo®
MAKERS OF ALL
STORE BRAND INFANT FORMULA

¹Human milk oligosaccharide. Not from human milk.

²PBM milk-based infant formula growth study in normal term infants (2005). Data on file. Perrigo Nutrition, Charlottesville, VA. Studied before the addition of prebiotics, lutein & HMO. See product labels for full disclaimers.

³Calculation based on May 2022 IRI Market Advantage annual retail sales data of national brand infant formula powder compared to store brand infant formula powder cost per week based on an average weekly usage of 1.5 pounds of powder.

⁴Wakefield Research, (2019), Perrigo Formula for Safety Survey, 500 respondents.

⁵Reflects an average consumption of 26 fl. oz. per day in the first year. Pricing, reconstitution rates and infant formula consumption may vary. Based on IRI Market Advantage sales data, May 2022.

*Special Supplemental Nutrition Program for Women, Infants and Children

**Supplemental Nutrition Assistance Program

Infant



Nutrición e Instrucciones en Español:
StoreBrandFormula.com/espanol

STORE BRAND
INFANT



\$0.57/oz¹

ENFAMIL®
INFANT



\$1.50/oz¹

Nutrients /100 Cal

	FDA Nutrient Requirements*		
Protein g	1.8-4.5	2	2
Fat g	3.3-6.0	5.3	5.3
Carbohydrate g	NS	11.3	11.3
Water g	NS	134	133
Linoleic Acid mg	300	780	780

Vitamins

Vitamin A IU	250-750	300	300
Vitamin D IU	40-100	60	60
Vitamin E IU	0.7	2	2
Vitamin K mcg	4	9	9
Vitamin B1, mcg	40	80	80
Vitamin B2, mcg	60	140	140
Vitamin B6, mcg	35	60	60
Vitamin B12, mcg	0.15	0.3	0.3
Niacin mcg	250	1,000	1,000
Folic Acid mcg	4	16	16
Pantothenic Acid mcg	300	500	500
Biotin mcg	1.5	3	3
Vitamin C mg	8	12	12
Choline mg	7	24	24
Inositol mg	4	24	6

Minerals

Calcium mg	60	78	78
Phosphorus mg	30	43	43
Magnesium mg	6	8	8
Iron mg	0.15-3.0	1.8	1.8
Zinc mg	0.5	1	1
Manganese mcg	5	15	15
Copper mcg	60	75	75
Iodine mcg	5-75	15	15
Selenium mcg	2-7	2.8	2.8
Sodium mg	20-60	27	27
Potassium mg	80-200	108	108
Chloride mg	55-150	63	63

INDICATION

Store Brand Infant is a routine milk-based, iron fortified 20kcal/oz formula created to meet the nutritional needs of term infants 0-12 months of age. It provides complete nutrition supporting growth and development, containing choline and Omega-3 DHA, important for brain nourishment, and a blend of two prebiotics to help support baby's immune system.

PRODUCT FEATURES

- ✓ 20mg of Omega-3 DHA per 6 fl oz
- ✓ Dual prebiotics galactooligosaccharide (GOS) and fructooligosaccharide (FOS)
- ✓ Nutrient density of 20kcal/oz
- ✓ Protein is 52:48 whey-to-casein ratio

COMPOSITION

NONFAT MILK, LACTOSE, VEGETABLE OILS (PALM OLEIN, COCONUT, SOY, HIGH OLEIC [SAFFLOWER OR SUNFLOWER] OIL), WHEY PROTEIN CONCENTRATE, GALACTOOLIGOSACCHARIDES¹, **LESS THAN 1%:** MORTIERELLA ALPINA OIL², CRYPTHECODINIUM COHNII OIL², FRUCTOOLIGOSACCHARIDES¹, SOY LECITHIN, VITAMIN A PALMITATE, VITAMIN D3, VITAMIN E ACETATE, VITAMIN K1, THIAMINE HYDROCHLORIDE, RIBOFLAVIN, VITAMIN B6 HYDROCHLORIDE, VITAMIN B12, NIACINAMIDE, FOLIC ACID, CALCIUM PANTOTHENATE, BIOTIN, ASCORBIC ACID, CHOLINE BITARTRATE, INOSITOL, CALCIUM CARBONATE, CALCIUM CHLORIDE, CALCIUM HYDROXIDE, MAGNESIUM CHLORIDE, FERROUS SULFATE, ZINC SULFATE, MANGANESE SULFATE, CUPRIC SULFATE, POTASSIUM BICARBONATE, POTASSIUM IODIDE, POTASSIUM HYDROXIDE, POTASSIUM PHOSPHATE, SODIUM SELENITE, SODIUM CITRATE, TAURINE, L-CARNITINE, BETA-CAROTENE, MIXED TOCOPHEROL CONCENTRATE, ASCORBYL PALMITATE, MONOGLYCERIDES, NUCLEOTIDES (ADENOSINE-5'-MONOPHOSPHATE, CYTIDINE-5'-MONOPHOSPHATE, DISODIUM GUANOSINE-5'-MONOPHOSPHATE, DISODIUM URIDINE-5'-MONOPHOSPHATE). **CONTAINS MILK AND SOY.**

*FDA Infant Formula Act
NS = not specified

¹A TYPE OF PREBIOTIC

²A SOURCE OF ARACHIDONIC ACID (ARA)

³A SOURCE OF DOCOSAHEXAENOIC ACID (DHA)

¹Pricing shown based on IRI Market Advantage 12 month average price per powder pound data for comparable store brand and national brand as of May 2022.

This product is not manufactured or distributed by the owner of the registered trademark Enfamil®.

See Product Label for full disclaimers (R90).

PRODUCT AT LEADING RETAILERS



WALMART



TARGET



SAM'S CLUB



AMAZON



KROGER



Visit PerrigoPediatrics.com/FormulasCompare to find a full list of stores in your area.

Advantage Premium™



Nutrición e Instrucciones en Español:
StoreBrandFormula.com/espanol

STORE BRAND
ADVANTAGE
PREMIUM™



\$0.78/oz¹

SIMILAC
PRO-ADVANCE®



\$1.22/oz²

Nutrients /100 Cal

	FDA Nutrient Requirements*		
Protein g	1.8-4.5	2.07	2.07
Fat g	3.3-6.0	5.6	5.6
Carbohydrate g	NS	10.5	10.5
Water g	NS	133	134
Linoleic Acid mg	300	1,000	1,000

Vitamins

Vitamin A IU	250-750	300	300
Vitamin D IU	40-100	60	60
Vitamin E IU	0.7	1.5	1.5
Vitamin K mcg	4	8	8
Vitamin B1, mcg	40	100	100
Vitamin B2, mcg	60	150	150
Vitamin B6, mcg	35	60	60
Vitamin B12, mcg	0.15	0.25	0.25
Niacin mcg	250	1,050	1,050
Folic Acid mcg	4	15	15
Pantothenic Acid mcg	300	450	450
Biotin mcg	1.5	4.4	4.4
Vitamin C mg	8	9	9
Choline mg	7	24	24
Inositol mg	4	24	24

Minerals

Calcium mg	60	78	78
Phosphorus mg	30	42	42
Magnesium mg	6	6	6
Iron mg	0.15-3.0	1.8	1.8
Zinc mg	0.5	0.75	0.75
Manganese mcg	5	5	5
Copper mcg	60	90	90
Iodine mcg	5-75	15	15
Selenium mcg	2-7	2	2
Sodium mg	20-60	24	24
Potassium mg	80-200	105	105
Chloride mg	55-150	65	65

INDICATION

Store Brand Advantage Premium™ infant formula is milk-based, non-GMO³, iron-fortified routine formula with complete nutrition to support growth and development. For use as a supplement or alternative to breastfeeding in term infants 0-12 months of age. Contains no artificial growth hormones[#] and includes key ingredients found in breastmilk, like Vitamin E and Lutein for eye development, DHA for brain development and human milk oligosaccharides[§] (HMOs) 2'-FL and LNnt to support immunity.

PRODUCT FEATURES

- ✓ DHA, Lutein and Vitamin E
- ✓ 2'-FL & LNnt HMOs for Immune Support
- ✓ Prebiotic fructooligosaccharide (FOS)
- ✓ Nutrient density of 20kcal/oz

COMPOSITION

NONFAT MILK, LACTOSE, HIGH OLEIC (SAFFLOWER OR SUNFLOWER) OIL, SOY OIL, WHEY PROTEIN CONCENTRATE, COCONUT OIL, **LESS THAN 1%:** Schizochytrium SP OIL[†], MORTIERELLA ALPINA OIL[†], 2'-FUCOSYLLACTOSE (2'-FL)[§], LACTO-N-NEOTETRAOSE (LNnt)[§], BETA-CAROTENE, LUTEIN, POTASSIUM BICARBONATE, CALCIUM CARBONATE, ASCORBIC ACID, SOY LECITHIN, MONOGLYCERIDES, CALCIUM CHLORIDE, CALCIUM HYDROXIDE, MAGNESIUM CHLORIDE, FERROUS SULFATE, CHOLINE BITARTRATE, ASCORBYL PALMITATE, SODIUM CITRATE, TAURINE, INOSITOL, ZINC SULFATE, MIXED TOCOPHEROL CONCENTRATE, VITAMIN E (dl-ALPHA TOCOPHERYL ACETATE), NIACINAMIDE, CALCIUM PANTOTHENATE, L-CARNITINE, VITAMIN A PALMITATE, CUPRIC SULFATE, THIAMINE HYDROCHLORIDE, RIBOFLAVIN, PYRIDOXINE HYDROCHLORIDE, FOLIC ACID, MANGANESE SULFATE, VITAMIN K1 (PHYTONADIENE), BIOTIN, SODIUM SELENITE, VITAMIN D3, CYANOCOBALAMIN, POTASSIUM PHOSPHATE, POTASSIUM IODIDE, POTASSIUM HYDROXIDE, NUCLEOTIDES (ADENOSINE-5'-MONOPHOSPHATE, CYTIDINE-5'-MONOPHOSPHATE, DISODIUM GUANOSINE-5'-MONOPHOSPHATE, DISODIUM URIDINE-5'-MONOPHOSPHATE). **CONTAINS MILK AND SOY.**

*FDA Infant Formula Act
NS = not specified

[†]Not from human milk.

[‡]NO SIGNIFICANT DIFFERENCE HAS BEEN SHOWN BETWEEN MILK DERIVED FROM rbST-TREATED AND NON-rbST-TREATED COWS

[§]INGREDIENTS NOT GENETICALLY ENGINEERED

[¶]SOURCES OF PREBIOTIC

[‡]A SOURCE OF ARACHIDONIC ACID (ARA)

[‡]A SOURCE OF DOCOSAHEXAENOIC ACID (DHA)

¹Price per oz based on Perrigo's MSRP of Advantage Premium™ infant formula at major retailers. MSRP is manufacturer-suggested pricing only, retailers alone set pricing, cost savings may vary.

²Pricing shown based on IRI Market Advatnage 12 month average price per pound for Similac Pro-Advance® powder as of May 2022.

This product is not manufactured or distributed by the owner of the registered trademarks Similac® and Pro-Advance®.

See Product Label for full disclaimers (U52).

PRODUCT AT LEADING RETAILERS



WALMART



TARGET



SAM'S CLUB



AMAZON



KROGER



Visit PerrigoPediatrics.com/FormulasCompare to find a full list of stores in your area.

Kirkland Signature™ Procare™



Nutrición e Instrucciones en Español:
StoreBrandFormula.com/espanol

STORE BRAND
PROCARE™



\$0.52/oz¹

SIMILAC®
PRO-
ADVANCE®



\$1.13/oz²

ENFAMIL®
NEUROPRO™
INFANT



\$1.02/oz²

Nutrients /100 Cal

	FDA Nutrient Requirements*			
Protein g	1.8-4.5	2.07	2.07	2
Fat g	3.3-6.0	5.6	5.6	5.3
Carbohydrate g	NS	10.5	10.5	11.3
Water g	NS	132	132	133
Linoleic Acid mg	300	1,000	1,000	780

Vitamins

Vitamin A IU	250-750	300	300	300
Vitamin D IU	40-100	75	60	75
Vitamin E IU	0.7	2	1.5	2
Vitamin K mcg	4	9	8	9
Vitamin B1, mcg	40	100	100	80
Vitamin B2, mcg	60	160	150	140
Vitamin B6, mcg	35	63	60	60
Vitamin B12, mcg	0.15	0.30	0.25	0.3
Niacin mcg	250	1,100	1,050	1,000
Folic Acid mcg	4	16	15	16
Pantothenic Acid mcg	300	500	450	500
Biotin mcg	1.5	4.6	4.4	3
Vitamin C mg	8	12	9	12
Choline mg	7	24	24	24
Inositol mg	4	24	24	24

Minerals

Calcium mg	60	82	78	78
Phosphorus mg	30	44	42	43
Magnesium mg	6	8	6	8
Iron mg	0.15-3.0	1.9	1.8	1.8
Zinc mg	0.5	1	0.75	1
Manganese mcg	5	15	5	15
Copper mcg	60	95	90	75
Iodine mcg	5-75	15	15	15
Selenium mcg	2-7	2.8	2	2.8
Sodium mg	20-60	27	24	27
Potassium mg	80-200	110	105	108
Chloride mg	55-150	68	65	63

INDICATION

Kirkland Signature™ ProCare™ Infant Formula is a milk-based routine infant formula for term infants 0-12 months of age designed to be like breast milk, offering complete nutrition for baby's first year and now with double the HMOs.[†]

PRODUCT FEATURES

- ✓ No Palm Olein Oil to promote calcium absorption for strong bones
- ✓ Protein ratio of 52:48 whey-to-casein
- ✓ DHA (docosahexaenoic acid), which occurs naturally in mother's milk is present and supports babies' developing brains
- ✓ Contains Lutein, a naturally occurring carotenoid and antioxidant, which is beneficial for babies' developing eyes
- ✓ Nutrient density of 20 kcal/oz
- ✓ Boosted 2'-FL HMO to a level that aligns with mother's milk and added LNnT, another HMO naturally occurring in breast milk because studies show that these two abundant HMOs work better to supply baby's digestive comfort and developing immune support
- ✓ Does not contain artificial growth hormones* and is Non-GMO**
- ✓ Gluten free, Certified Kosher by the Orthodox Union - OU-D, and Halal Certified by Islamic Services of America

COMPOSITION

NONFAT MILK, LACTOSE, HIGH OLEIC (SAFFLOWER OR SUNFLOWER) OIL, SOY OIL, WHEY PROTEIN CONCENTRATE, COCONUT OIL, **LESS THAN 1%:** SCHIZOCHYTRIUM SP. OIL[‡], MORTIERELLA ALPINA OIL[‡], 2'-FUCOSYLLACTOSE (2'-FL)[§], LACTO-N-NEOTETRAOSE (LNnT)[§], BETA-CAROTENE, LUTEIN, POTASSIUM BICARBONATE, CALCIUM CARBONATE, ASCORBIC ACID, SOY LECITHIN, MONOGLYCERIDES, CALCIUM CHLORIDE, CALCIUM HYDROXIDE, MAGNESIUM CHLORIDE, FERROUS SULFATE, CHOLINE BITARTRATE, ASCORBYL PALMITATE, SODIUM CITRATE, TAURINE, INOSITOL, ZINC SULFATE, MIXED TOCOPHEROL CONCENTRATE, VITAMIN E (dl-ALPHA TOCOPHERYL ACETATE), NIACINAMIDE, CALCIUM PANTOTHENATE, L-CARNITINE, VITAMIN A PALMITATE, CUPRIC SULFATE, THIAMINE HYDROCHLORIDE, RIBOFLAVIN, PYRIDOXINE HYDROCHLORIDE, FOLIC ACID, MANGANESE SULFATE, VITAMIN K1 (PHYTONADIONE), BIOTIN, SODIUM SELENITE, VITAMIN D3, CYANOCOBALAMIN, POTASSIUM PHOSPHATE, POTASSIUM IODIDE, POTASSIUM HYDROXIDE, NUCLEOTIDES (ADENOSINE-5'-MONOPHOSPHATE, CYTIDINE-5'-MONOPHOSPHATE, DISODIUM GUANOSINE-5'-MONOPHOSPHATE, DISODIUM URIDINE-5'-MONOPHOSPHATE), **CONTAINS MILK AND SOY.**

*FDA Infant Formula Act

NS = not specified

**Not from human milk. Levels compared to previous Kirkland Signature™ ProCare™ infant formula.

†No significant difference has been shown between milk derived from rBST-treated AND NON-TEST-treated cows.

‡Ingredients Not Genetically Engineered.

§A SOURCE OF DOCOSAHEXAENOIC ACID (DHA)

¶A SOURCE OF ARACHIDONIC ACID (ARA)

**SOURCES OF PREBIOTIC

¹Pricing reflects Perrigo's 2022 MSRP for a 34oz container of ProCare Kirkland Signature™ ProCare™ Infant Formula. MSRP is manufacturer-suggested pricing only, retailers alone set pricing, and may vary.

²Pricing from IRI National Consumer Panel CSIA 12-month average price per unit data for powdered Similac® Pro-Advance and Enfamil® NeuroPro™ infant formulas sold at Club store (BJs, Sam's Club and Costco) as of January 2022.

This product is not manufactured or distributed by the owners of the registered trademark Similac Pro-Advance® or Enfamil NeuroPro™ trademark.

See Product Label for full disclaimers (G00).



Visit PerrigoPediatrics.com/FormulasCompare to find a full list of stores in your area.



STORE BRAND
GENTLE®



\$0.60/oz¹

ENFAMIL®
GENTLEASE®



\$1.44/oz¹

Nutrients /100 Cal

	FDA Nutrient Requirements*		
Protein g	1.8-4.5	2.3	2.3
Fat g	3.3-6.0	5.3	5.3
Carbohydrate g	NS	10.8	10.8
Water g	NS	134	133
Linoleic Acid mg	300	780	780

Vitamins

Vitamin A IU	250-750	300	300
Vitamin D IU	40-100	60	60
Vitamin E IU	0.7	2	2
Vitamin K mcg	4	9	9
Vitamin B1, mcg	40	80	80
Vitamin B2, mcg	60	140	140
Vitamin B6, mcg	35	60	60
Vitamin B12, mcg	0.15	0.3	0.3
Niacin mcg	250	1,000	1,000
Folic Acid mcg	4	16	16
Pantothenic Acid mcg	300	500	500
Biotin mcg	1.5	3	3
Vitamin C mg	8	12	12
Choline mg	7	24	24
Inositol mg	4	24	6

Minerals

Calcium mg	60	82	82
Phosphorus mg	30	46	46
Magnesium mg	6	8	8
Iron mg	0.15-3.0	1.8	1.8
Zinc mg	0.5	1	1
Manganese mcg	5	15	15
Copper mcg	60	75	75
Iodine mcg	5-75	15	15
Selenium mcg	2-7	2.8	2.8
Sodium mg	20-60	36	40
Potassium mg	80-200	108	108
Chloride mg	55-150	63	63

INDICATION

Store Brand Gentle® infant formula is a milk-based, iron-fortified, easy-to-digest formula with casein and partially hydrolyzed whey for term infants 0-12 months of age. Designed for fussiness, gas and crying, it provides complete nutrition, and supports growth and development.

PRODUCT FEATURES

- ✓ 20mg of Omega-3 DHA per 6 fl oz
- ✓ Partially broken down protein
- ✓ Nutrient density of 20kcal/oz
- ✓ Protein is 60:40 whey-to-casein ratio
- ✓ 29mg of the nutrient inositol per 6 fl oz

COMPOSITION

CORN SYRUP, NONFAT MILK, PALM OLEIN, PARTIALLY HYDROLYZED WHEY, SOY OIL, COCONUT OIL, HIGH OLEIC (SAFFLOWER OR SUNFLOWER) OIL, **LESS THAN 2%:** MORTIERELLA ALPINA OIL*, CRYPTHECODINIUM COHNII OIL**, L-CARNITINE, MIXED TOCOPHEROL CONCENTRATE, MONOGLYCERIDES, SOY LECITHIN, TAURINE, CALCIUM CARBONATE, CALCIUM CHLORIDE, CUPRIC SULFATE, FERROUS SULFATE, MAGNESIUM CHLORIDE, MANGANESE SULFATE, POTASSIUM BICARBONATE, POTASSIUM HYDROXIDE, POTASSIUM IODIDE, POTASSIUM PHOSPHATE, SODIUM CITRATE, SODIUM SELENITE, ZINC SULFATE, ASCORBIC ACID, ASCORBYL PALMITATE, BETA-CAROTENE, BIOTIN, CALCIUM PANTOTHENATE, CHOLINE BITARTRATE, CYANOCOBALAMIN, FOLIC ACID, INOSITOL, NIACINAMIDE, PYRIDOXINE HYDROCHLORIDE, RIBOFLAVIN, THIAMINE HYDROCHLORIDE, VITAMIN A PALMITATE, VITAMIN D (CHOLECALCIFEROL), VITAMIN E (DL-ALPHA TOCOPHERYL ACETATE), VITAMIN K (PHYTONADIONE).

CONTAINS MILK AND SOY.

*FDA Infant Formula Act

NS = not specified

*A SOURCE OF ARACHIDONIC ACID (ARA)

**A SOURCE OF DOCOSAHEXAENOIC ACID (DHA)

¹Pricing shown based on IRI Market Advantage 12 month average price per powder pound data for comparable store brand and national brand as of May 2022.

This product is not manufactured or distributed by the owner of the registered trademarks Enfamil® and Gentlease®.

See Product Label for full disclaimers (X17).

PRODUCT AT LEADING RETAILERS



WALMART



TARGET



SAM'S CLUB



AMAZON



KROGER



Visit PerrigoPediatrics.com/FormulaCompare to find a full list of stores in your area.

Sensitivity Premium™



Nutrición e Instrucciones en Español:
StoreBrandFormula.com/espanol

STORE BRAND
SENSITIVITY
PREMIUM™



\$0.78/oz¹

SIMILAC
PRO-SENSITIVE®



\$1.25/oz²

Nutrients /100 Cal

	FDA Nutrient Requirements*		
Protein g	1.8-4.5	2.1	2.1
Fat g	3.3-6.0	5.4	5.4
Carbohydrate g	NS	10.9	10.9
Water g	NS	134	133
Linoleic Acid mg	300	1,000	1,000

Vitamins

Vitamin A IU	250-750	300	300
Vitamin D IU	40-100	60	60
Vitamin E IU	0.7	1.5	1.5
Vitamin K mcg	4	8	8
Vitamin B1, mcg	40	100	100
Vitamin B2, mcg	60	150	150
Vitamin B6, mcg	35	60	60
Vitamin B12, mcg	0.15	0.25	0.25
Niacin mcg	250	1,050	1,050
Folic Acid mcg	4	15	15
Pantothenic Acid mcg	300	450	450
Biotin mcg	1.5	4.4	4.4
Vitamin C mg	8	9	9
Choline mg	7	24	24
Inositol mg	4	24	24

Minerals

Calcium mg	60	84	84
Phosphorus mg	30	56	56
Magnesium mg	6	6	6
Iron mg	0.15-3.0	1.8	1.8
Zinc mg	0.5	0.75	0.75
Manganese mcg	5	5	5
Copper mcg	60	90	90
Iodine mcg	5-75	15	15
Selenium mcg	2-7	2	2
Sodium mg	20-60	30	30
Potassium mg	80-200	107	107
Chloride mg	55-150	65	65

INDICATION

Store Brand Sensitivity Premium™ infant formula is 99% reduced lactose compared to Store Brand Advantage Premium™, milk-based, non-GMO^x, iron-fortified formula with complete nutrition to support growth and development. It is designed as an alternative to routine milk based formulas, if babies experience fussiness and gas due to sensitivity to lactose. Contains no artificial growth hormones[#] and includes key ingredients found in breastmilk, like Vitamin E and Lutein for eye development, DHA for brain development and human milk oligosaccharides⁵ (HMOs) 2'-FL and LNnt to support immunity.

PRODUCT FEATURES

- ✓ 2'-FL & LNnt HMOs for Immune Support
- ✓ Nutrient density of 20kcal/oz
- ✓ DHA, Lutein and Vitamin E
- ✓ 99% less lactose than our standard milk-based formula[‡]

COMPOSITION

CORN SYRUP, MILK PROTEIN ISOLATE, HIGH OLEIC (SAFFLOWER OR SUNFLOWER) OIL, SUCROSE, SOY OIL, COCONUT OIL, **LESS THAN 2%:** MORTIERELLA ALPINA OIL*, SCHIZOCHYTRIUM SP. OIL**, 2'-FUCOSYLLACTOSE (2'-FL)[‡], LACTO-N-NEOTETRAOSE (LNnt)[‡], LUTEIN, CALCIUM PHOSPHATE, POTASSIUM CITRATE, POTASSIUM CHLORIDE, SODIUM CITRATE, MAGNESIUM PHOSPHATE, ASCORBIC ACID, CALCIUM CARBONATE, FERROUS SULFATE, MAGNESIUM CHLORIDE, ASCORBYL PALMITATE, CHOLINE BITARTRATE, TAURINE, INOSITOL, VITAMIN E (DL-ALPHA TOCOPHERYL ACETATE), ZINC SULFATE, MIXED TOCOPHEROL CONCENTRATE, L-CARNITINE, NIACIN (NICOTINAMIDE), CALCIUM PANTOTHENATE, VITAMIN A PALMITATE, CUPRIC SULFATE, THIAMINE HYDROCHLORIDE, RIBOFLAVIN, PYRIDOXINE HYDROCHLORIDE, BETA-CAROTENE, FOLIC ACID, MANGANESE SULFATE, POTASSIUM IODIDE, VITAMIN K (PHYTONADIONE), BIOTIN, SODIUM SELENITE, VITAMIN D (CHOLECALCIFEROL), CYANOCOBALAMIN, POTASSIUM HYDROXIDE, POTASSIUM BICARBONATE, SODIUM CHLORIDE, SODIUM PHOSPHATE, MONOGLYCERIDES, SOY LECITHIN, NUCLEOTIDES (ADENOSINE-5'-MONOPHOSPHATE, CYTIDINE-5'-MONOPHOSPHATE, DISODIUM GUANOSINE-5'-MONOPHOSPHATE, DISODIUM URIDINE-5'-MONOPHOSPHATE).

CONTAINS MILK AND SOY.

Not intended for use by infants or children with Galactosemia.

*FDA Infant Formula Act
NS = not specified

**Not from human milk.

*NO SIGNIFICANT DIFFERENCE HAS BEEN SHOWN BETWEEN MILK DERIVED FROM rbST-TREATED AND NON-rbST-TREATED COWS

*INGREDIENTS NOT GENETICALLY ENGINEERED

¹Price per oz based on Perrigo's MSRP of Sensitivity Premium™ infant formula at major retailers. MSRP is manufacturer-suggested pricing only, retailers alone set pricing, cost savings may vary.

²Pricing shown based on IRI Market Advantage 12 month average price per pound for Similac Pro-Sensitive® powder as of May 2022.

This product is not manufactured or distributed by the owner of the registered trademarks Similac® and Pro-Sensitive®.

Store Brand Sensitivity Premium™ Infant Formula does not contain the identical proprietary ingredient blend of prebiotics, patented levels of nucleotides, lutein, and lycopene in comparable Similac® infant formulas.

See Product Label for full disclaimers (S89).

⁴SOURCES OF PREBIOTIC

⁵A SOURCE OF ARACHIDONIC ACID (ARA)

⁶A SOURCE OF DOCOSAHEXAENOIC ACID (DHA)

[‡]99% less lactose than standard milk-based infant formulas.

Product nutrient values and ingredients are subject to change.

Please see product label for current information

PRODUCT AT LEADING RETAILERS



Visit PerrigoPediatrics.com/FormulaCompare to find a full list of stores in your area.

Complete Comfort Premium™



Nutrición e Instrucciones en Español:
StoreBrandFormula.com/espanol

STORE BRAND
COMPLETE
COMFORT
PREMIUM™



\$0.80/oz¹

SIMILAC®
PRO-TOTAL
COMFORT®



\$1.26/oz²

Nutrients /100 Cal

	FDA Nutrient Requirements*		
Protein g	1.8-4.5	2.32	2.32
Fat g	3.3-6.0	5.4	5.4
Carbohydrate g	NS	10.7	10.7
Water g	NS	134	133
Linoleic Acid mg	300	1,000	1,000

Vitamins

Vitamin A IU	250-750	300	300
Vitamin D IU	40-100	60	60
Vitamin E IU	0.7	1.5	1.5
Vitamin K mcg	4	8	8
Vitamin B1, mcg	40	100	100
Vitamin B2, mcg	60	150	150
Vitamin B6, mcg	35	60	60
Vitamin B12, mcg	0.15	0.25	0.265
Niacin mcg	250	1,050	1,050
Folic Acid mcg	4	15	15
Pantothenic Acid mcg	300	450	450
Biotin mcg	1.5	4.4	4.4
Vitamin C mg	8	9	9
Choline mg	7	24	24
Inositol mg	4	24	24

Minerals

Calcium mg	60	105	105
Phosphorus mg	30	75	75
Magnesium mg	6	6	6
Iron mg	0.15-3.0	1.8	1.8
Zinc mg	0.5	0.75	0.75
Manganese mcg	5	5	5
Copper mcg	60	90	90
Iodine mcg	5-75	15	15
Selenium mcg	2-7	2	2
Sodium mg	20-60	44	44
Potassium mg	80-200	118	118
Chloride mg	55-150	65	65

INDICATION

Store Brand Complete Comfort Premium™ is nutritionally complete, non-GMO*, infant formula for mild tolerance symptoms such as fussiness and gas in term infants. Made with 100% partially hydrolyzed whey protein. Contains no artificial growth hormones# and includes key ingredients found in breastmilk, like Vitamin E and Lutein for eye development, DHA for brain development and prebiotic human milk oligosaccharides⁵ (HMOs) 2'-FL and LNnt to support immunity.

PRODUCT FEATURES

- ✓ Easy to digest, 100% partially hydrolyzed whey protein
- ✓ No Palm Olein Oil
- ✓ 2'-FL & LNnt HMOs for Immune Support
- ✓ DHA, ARA, Lutein and Vitamin E
- ✓ No Artificial Growth Hormones#
- ✓ 20 cal/fl oz

COMPOSITION

CORN SYRUP SOLIDS, PARTIALLY HYDROLYZED WHEY PROTEIN, HIGH OLEIC (SAFFLOWER OR SUNFLOWER) OIL, SOY OIL, COCONUT OIL, LESS THAN 2%: SCHIZOCHYTRIUM SP. OIL*, MORTIERELLA ALPINA OIL*, LACTO-N-NEOTETRAOSE (LNNT)®, 2'-FUCOSYLACTOSE (2'-FL)®, BETA-CAROTENE, LUTEIN, POTASSIUM PHOSPHATE, CALCIUM CHLORIDE, CALCIUM CARBONATE, POTASSIUM BICARBONATE, MAGNESIUM CHLORIDE, ASCORBIC ACID, SOY LECITHIN, MONOGLYCERIDES, SODIUM CHLORIDE, SODIUM CITRATE, CALCIUM HYDROXIDE, FERROUS SULFATE, CHOLINE BITARTRATE, TAURINE, INOSITOL, ZINC SULFATE, ASCORBYL PALMITATE, L-CARNITINE, NIACINAMIDE, MIXED TOCOPHEROL CONCENTRATE, VITAMIN E (DL-ALPHA-TOCOPHERYL ACETATE), CALCIUM PANTOTHENATE, CUPRIC SULFATE, THIAMINE HYDROCHLORIDE, VITAMIN A PALMITATE, RIBOFLAVIN, PYRIDOXINE HYDROCHLORIDE, FOLIC ACID, MANGANESE SULFATE, VITAMIN K (PHYTONADIONE), POTASSIUM IODIDE, BIOTIN, SODIUM SELENITE, VITAMIN D (CHOLECALCIFEROL), CYANOCOBALAMIN, POTASSIUM HYDROXIDE, NUCLEOTIDES (CYTIDINE-5'-MONOPHOSPHATE, DISODIUM URIDINE-5'-MONOPHOSPHATE, ADENOSINE-5'-MONOPHOSPHATE, DISODIUM GUANOSINE-5'-MONOPHOSPHATE). CONTAINS MILK AND SOY.

*FDA Infant Formula Act
NS = not specified

*Not from human milk.

*SOURCES OF PREBIOTIC

*A SOURCE OF ARACHIDONIC ACID (ARA)

*A SOURCE OF DOCOSAHEXAENOIC ACID (DHA)

*NO SIGNIFICANT DIFFERENCE HAS BEEN SHOWN BETWEEN MILK DERIVED FROM rbST-TREATED AND NON-rbST-TREATED COWS

*INGREDIENTS NOT GENETICALLY ENGINEERED

¹Price per oz based on Perrigo's MSRP of Complete Comfort Premium™ infant formula at major retailers. MSRP is manufacturer-suggested pricing only, retailers alone set pricing, cost savings may vary.

²Pricing shown based on IRI Market Advantage 12 month average price per pound for Similac® Pro-Total Comfort® powder as of May 2022.

This product is not manufactured or distributed by the owner of the registered trademarks Similac® and Pro-Total Comfort®. See Product Label for full disclaimers (E30).

PRODUCT AT LEADING RETAILERS



WALMART



TARGET



SAM'S CLUB



AMAZON



MEIJER



Visit PerrigoPediatrics.com/FormulaCompare to find a full list of stores in your area.

Soy

ES Nutrición e Instrucciones en Español:
StoreBrandFormula.com/espanol

STORE BRAND
SOY



\$0.62/oz¹

SIMILAC®
SOY ISOMIL®



\$1.21/oz¹

ENFAMIL®
PROSOBEE®



\$1.46/oz¹

Nutrients /100 Cal

	FDA Nutrient Requirements*			
Protein g	1.8-4.5	2.45	2.45	2.5
Fat g	3.3-6.0	5.46	5.46	5.3
Carbohydrate g	NS	10.4	10.4	10.6
Water g	NS	133	133	133
Linoleic Acid mg	300	860	1,000	800

Vitamins

Vitamin A IU	250-750	300	300	300
Vitamin D IU	40-100	60	60	60
Vitamin E IU	0.7	1.5	1.5	2
Vitamin K mcg	4	11	11	9
Vitamin B1, mcg	40	63	60	80
Vitamin B2, mcg	60	95	90	90
Vitamin B6, mcg	35	63	60	60
Vitamin B12, mcg	0.15	0.47	0.45	0.3
Niacin mcg	250	1,400	1,350	1,000
Folic Acid mcg	4	16	15	16
Pantothenic Acid mcg	300	780	750	500
Biotin mcg	1.5	4.7	4.5	3
Vitamin C mg	8	9	9	12
Choline mg	7	24	24	24
Inositol mg	4	5	5	6

Minerals

Calcium mg	60	110	105	105
Phosphorus mg	30	79	75	69
Magnesium mg	6	7.9	7.5	8
Iron mg	0.15-3.0	1.9	1.8	1.8
Zinc mg	0.5	0.79	0.75	1.2
Manganese mcg	5	25	25	25
Copper mcg	60	79	75	75
Iodine mcg	5-75	16	15	15
Selenium mcg	2-7	2	2	2.8
Sodium mg	20-60	46	44	36
Potassium mg	80-200	110	108	120
Chloride mg	55-150	65	62	80

INDICATION

Store Brand Soy infant formula is for infants with feeding issues related to sensitivity to milk-based formula. It is iron-fortified and provides complete nutrition and supports growth and development. It is for babies with sensitive tummies when a soy formula is preferred. Suitable for ages 0-12 months.

PRODUCT FEATURES

- ✓ Lactose Free
- ✓ Nutrient density of 20kcal/oz
- ✓ DHA, Lutein and Vitamin E
- ✓ Protein is 100% soy
- ✓ Suitable for infants with lactose intolerance

COMPOSITION

CORN SYRUP, SOY PROTEIN ISOLATE, PALM OLEIN, SOY OIL, COCONUT OIL, HIGH OLEIC (SAFFLOWER OR SUNFLOWER) OIL, **LESS THAN 2%: MORTIERELLA ALPINA OIL*, CRYPTHECODINIUM COHNII OIL**, LUTEIN, FRUCTOOLIGOSACCHARIDE, CALCIUM PHOSPHATE, POTASSIUM CITRATE, POTASSIUM CHLORIDE, MAGNESIUM CHLORIDE, SODIUM CITRATE, ASCORBIC ACID, CHOLINE BITARTRATE, L-METHIONINE, TAURINE, ASCORBYL PALMITATE, FERROUS SULFATE, INOSITOL, MIXED TOCOPHEROL CONCENTRATE, ZINC SULFATE, VITAMIN E (dl-ALPHA TOCOPHERYL ACETATE), L-CARNITINE, NIACINAMIDE, CALCIUM PANTOTHENATE, CUPRIC SULFATE, THIAMINE HYDROCHLORIDE, VITAMIN A PALMITATE, RIBOFLAVIN, PYRIDOXINE HYDROCHLORIDE, FOLIC ACID, POTASSIUM IODIDE, POTASSIUM HYDROXIDE, VITAMIN K (PHYTONADIONE), BIOTIN, SODIUM SELENITE, BETA-CAROTENE, VITAMIN D (CHOLECALCIFEROL), CYANOCOBALAMIN, MONOGLYCERIDES, SOY LECITHIN, TRIBASIC CALCIUM PHOSPHATE, CALCIUM CARBONATE, MANGANESE SULFATE, POTASSIUM BICARBONATE. **CONTAINS SOY.****

*FDA Infant Formula Act

NS = not specified

* A SOURCE OF ARACHIDONIC ACID (ARA)

** A SOURCE OF DOCOSAHEXAENOIC ACID (DHA)

¹Pricing shown based on IRI Market Advantage 12 month average price per powder pound data for comparable soy store brand and national brand as of May 2022.

This product is not manufactured or distributed by the owners of the registered trademarks Similac® and ISOMIL® or Enfamil® and ProSobee®.

See Product Label for full disclaimers (H63).

PRODUCT AT LEADING RETAILERS



WALMART



TARGET



HEB



AMAZON



KROGER



Visit PerrigoPediatrics.com/FormulasCompare to find a full list of stores in your area.

Added Rice Starch



Nutrición e Instrucciones en Español:
StoreBrandFormula.com/espanol

STORE BRAND
ADDED RICE
STARCH



\$0.61/oz¹

ENFAMIL®
A.R.®



\$1.43/oz¹

SIMILAC®
FOR
SPIT-UP



\$1.42/oz¹

Nutrients /100 Cal

	FDA Nutrient Requirements*			
Protein g	1.8-4.5	2.5	2.5	2.1
Fat g	3.3-6.0	5.1	5.1	5.4
Carbohydrate g	NS	11.3	11.3	11
Water g	NS	134	133	133
Linoleic Acid mg	300	780	780	1,000

Vitamins

Vitamin A IU	250-750	300	300	300
Vitamin D IU	40-100	60	60	60
Vitamin E IU	0.7	2	2	1.5
Vitamin K mcg	4	9	9	8
Vitamin B1, mcg	40	80	80	100
Vitamin B2, mcg	60	140	140	150
Vitamin B6, mcg	35	60	60	60
Vitamin B12, mcg	0.15	0.3	0.3	0.25
Niacin mcg	250	1,000	1,100	1,050
Folic Acid mcg	4	16	16	15
Pantothenic Acid mcg	300	500	500	450
Biotin mcg	1.5	3	3	4.4
Vitamin C mg	8	12	12	9
Choline mg	7	24	24	24
Inositol mg	4	6	6	24

Minerals

Calcium mg	60	78	78	84
Phosphorus mg	30	53	53	56
Magnesium mg	6	8	8	6
Iron mg	0.15-3.0	1.8	1.8	1.8
Zinc mg	0.5	1	1	0.75
Manganese mcg	5	15	15	5
Copper mcg	60	75	75	90
Iodine mcg	5-75	15	15	15
Selenium mcg	2-7	2.8	2.8	2
Sodium mg	20-60	40	40	30
Potassium mg	80-200	108	108	107
Chloride mg	55-75	75	75	65

INDICATION

Store Brand Added Rice infant formula is a thickened, milk-based, iron-fortified formula designed to reduce frequent spit-up and volume of regurgitation. Appropriate for term infants ages 0-12 months, provides complete nutrition, supports growth and development, and meets the guidance of the American Academy of Pediatrics for reflux reduction.²

PRODUCT FEATURES

- ✓ DHA and Choline
- ✓ With dual prebiotics galactooligosaccharide (GOS) and fructooligosaccharide (FOS)
- ✓ More nutritionally balanced than adding rice cereal to formula
- ✓ Nutrient density of 20kcal/oz
- ✓ Protein is 20:80 whey-to-casein ratio

COMPOSITION

NONFAT MILK, VEGETABLE OILS (PALM OLEIN, SOY, COCONUT, AND HIGH OLEIC (SAFFLOWER OR SUNFLOWER) OIL), RICE STARCH, MALTODEXTRIN, LACTOSE, GALACTOOLIGOSACCHARIDES¹, **LESS THAN 1%:** MORTIERELLA ALPINA OIL¹, CRYPTHECODINIUM COHNII OIL¹, FRUCTOOLIGOSACCHARIDES¹, VITAMIN A PALMITATE, VITAMIN D (CHOLECALCIFEROL), VITAMIN E (DL-ALPHA TOCOPHERYL ACETATE), VITAMIN K (PHYTONADIONE), THIAMINE HYDROCHLORIDE, RIBOFLAVIN, PYRIDOXINE HYDROCHLORIDE, CYANOCOBALAMIN, NIACINAMIDE, FOLIC ACID, CALCIUM PANTOTHENATE, BIOTIN, ASCORBIC ACID, CHOLINE BITARTRATE, INOSITOL, FERROUS SULFATE, ZINC SULFATE, MANGANESE SULFATE, CUPRIC SULFATE, SODIUM SELENITE, SODIUM CITRATE, POTASSIUM HYDROXIDE, MAGNESIUM PHOSPHATE, POTASSIUM IODIDE, TAURINE, L-CARNITINE, POTASSIUM BICARBONATE, MIXED TOCOPHEROLS, SOY LECITHIN, MONOGLYCERIDES, CALCIUM CARBONATE, CALCIUM CHLORIDE, ASCORBYL PALMITATE, BETA-CAROTENE. **CONTAINS MILK AND SOY.**

*FDA Infant Formula Act

NS = not specified

¹A TYPE OF PREBIOTIC

²A SOURCE OF ARACHIDONIC ACID (ARA)

³A SOURCE OF DOCOSAHEXAENOIC ACID (DHA)

¹Pricing shown based on IRI Market Advantage 12 month average price per powder pound data for comparable store brand and national brand as of May 2022.

²Lightdale JR, Gremse DA. Section on Gastroenterology, Hepatology, and Nutrition. Gastroesophageal reflux: management guidance for the pediatrician. *Pediatrics*. 2013;131:e1684-e1695.

This product is not manufactured or distributed by the owners of the registered trademarks Enfamil A.R.® or Similac®.

See Product Label for full disclaimers (X09).

PRODUCT AT LEADING RETAILERS



WALMART



TARGET



Visit PerrigoPediatrics.com/FormulaCompare to find a full list of stores in your area.

Hypoallergenic



Nutrición e Instrucciones en Español:
StoreBrandFormula.com/espanol

STORE BRAND
HYPOALLERGENIC



\$1.52/oz¹

ENFAMIL®
NUTRAMIGEN®†



\$2.09/oz¹

SIMILAC®
ALIMENTUM®†



\$1.99/oz¹

Nutrients /100 Cal

	FDA Nutrient Requirements*			
Protein g	1.8-4.5	2.8	2.8	2.75
Fat g	3.3-6.0	5.3	5.3	5.54
Carbohydrate g	NS	10.3	10.3	10.2
Water g	NS	133	131	133
Linoleic Acid mg	300	860	860	800

Vitamins

Vitamin A IU	250-750	300	300	300
Vitamin D IU	40-100	50	50	60
Vitamin E IU	0.7	2	2	3.0
Vitamin K mcg	4	9	9	8
Vitamin B1, mcg	40	80	80	60
Vitamin B2, mcg	60	90	90	90
Vitamin B6, mcg	35	60	60	60
Vitamin B12, mcg	0.15	0.3	0.3	0.45
Niacin mcg	250	1,000	1,000	1,350
Folic Acid mcg	4	16	16	15
Pantothenic Acid mcg	300	500	500	750
Biotin mcg	1.5	3	3	4.5
Vitamin C mg	8	12	12	9.0
Choline mg	7	24	24	12
Inositol mg	4	17	17	5

Minerals

Calcium mg	60	94	94	105
Phosphorus mg	30	52	52	75
Magnesium mg	6	8	8	7.5
Iron mg	0.15-3.0	1.8	1.8	1.8
Zinc mg	0.5	1	1	0.75
Manganese mcg	5	25	25	8
Copper mcg	60	75	75	75
Iodine mcg	5-75	15	15	15
Selenium mcg	2-7	2.8	2.8	2
Sodium mg	20-60	47	47	44
Potassium mg	80-200	110	110	118
Chloride mg	55-75	86	86	80

INDICATION

Store Brand Hypoallergenic Infant Formula is iron-fortified and provides complete nutrition, 20 cal/fl oz, and is designed for term infants who are allergic to the intact proteins in cow's milk. Helps manage colic symptoms^s with extensively hydrolyzed casein to help avoid an immune system response by reducing the allergen exposure.

PRODUCT FEATURES

- ✓ Clinically tested to be non-reactive in >98% of infants with confirmed CMA²
- ✓ 100% extensively hydrolyzed casein
- ✓ 17mg of Omega-3 DHA per 100kcal, the expert recommended level³
- ✓ Probiotic L. rhamnosus to help support the intestinal barrier and digestive health
- ✓ Nutrient density of 20kcal/fl oz
- ✓ Lactose-Free

COMPOSITION

CORN SYRUP SOLIDS, VEGETABLE OILS (PALM OLEIN, SOY, COCONUT, HIGH OLEIC (SAFFLOWER OR SUNFLOWER) OIL), CASEIN HYDROLYSATE (FROM MILK)†, MODIFIED CORN STARCH, **LESS THAN 2%: MORTIERELLA ALPINA OIL***, CRYPTHECODINIUM COHNII OIL*, LACTOBACILLUS RHAMNOSUS, BETA-CAROTENE, VITAMIN A PALMITATE, VITAMIN D3, VITAMIN E ACETATE, VITAMIN K1, THIAMIN HYDROCHLORIDE, RIBOFLAVIN, VITAMIN B6 HYDROCHLORIDE, VITAMIN B12, NIACINAMIDE, FOLIC ACID, CALCIUM PANTOTHENATE, BIOTIN, ASCORBIC ACID, CHOLINE BITARTRATE, INOSITOL, CALCIUM CITRATE, CALCIUM HYDROXIDE, CALCIUM PHOSPHATE, MAGNESIUM CHLORIDE, FERROUS SULFATE, ZINC SULFATE, MANGANESE SULFATE, CUPRIC SULFATE, POTASSIUM IODIDE, SODIUM SELENITE, SODIUM CITRATE, POTASSIUM CITRATE, POTASSIUM CHLORIDE, POTASSIUM BICARBONATE, L-CYSTINE, L-TRYPTOPHAN, TAURINE, L-CARNITINE, CALCIUM CARBONATE, CALCIUM CHLORIDE, POTASSIUM HYDROXIDE, POTASSIUM PHOSPHATE, ASCORBYL PALMITATE, MIXED TOCOPHEROL CONCENTRATE

*FDA Infant Formula Act

†A SOURCE OF HYPOALLERGENIC PROTEIN

*A SOURCE OF ARACHIDONIC ACID (ARA)

**A SOURCE OF DOCOSAHEXAENOIC ACID (DHA)

¹Pricing shown based on IRI Market Advantage 12 month average price per powder pound data for comparable store brand and national brand as of May 2022.

²Barber, et al. A Double-Blind, Randomized, Crossover Allergy study of an Extensively Hydrolyzed Casein Formula. J Nutr Food Sci 2018; 8-6. In a randomized, DBOFC a single administration of Store Brand Hypoallergenic Infant Formula was comparable to a single administration of Nutramigen® for non-reactivity in patients with confirmed CMA. Both satisfied established AAP criteria for hypoallergenic formulas.

³World Health Organization recommended amount of DHA is 0.2% - 0.36% of total fatty acids. Enfamil® and Store Brand Hypoallergenic = 0.32% of total fatty acids.

[†]Due to cow's milk allergy

[†]This product is not manufactured or distributed by the owner of the registered trademark. Please see product labels for full disclaimers.

Store Brand Hypoallergenic Infant Formula does not contain the identical proprietary ingredient blend of prebiotics, patented levels of nucleotides, lutein and lycopene in Similac® Alimentum®.

PRODUCT AT LEADING RETAILERS



WALMART



TARGET



KROGER



AMAZON



MEIJER



Visit PerrigoPediatrics.com/FormulaCompare to find a full list of stores in your area.