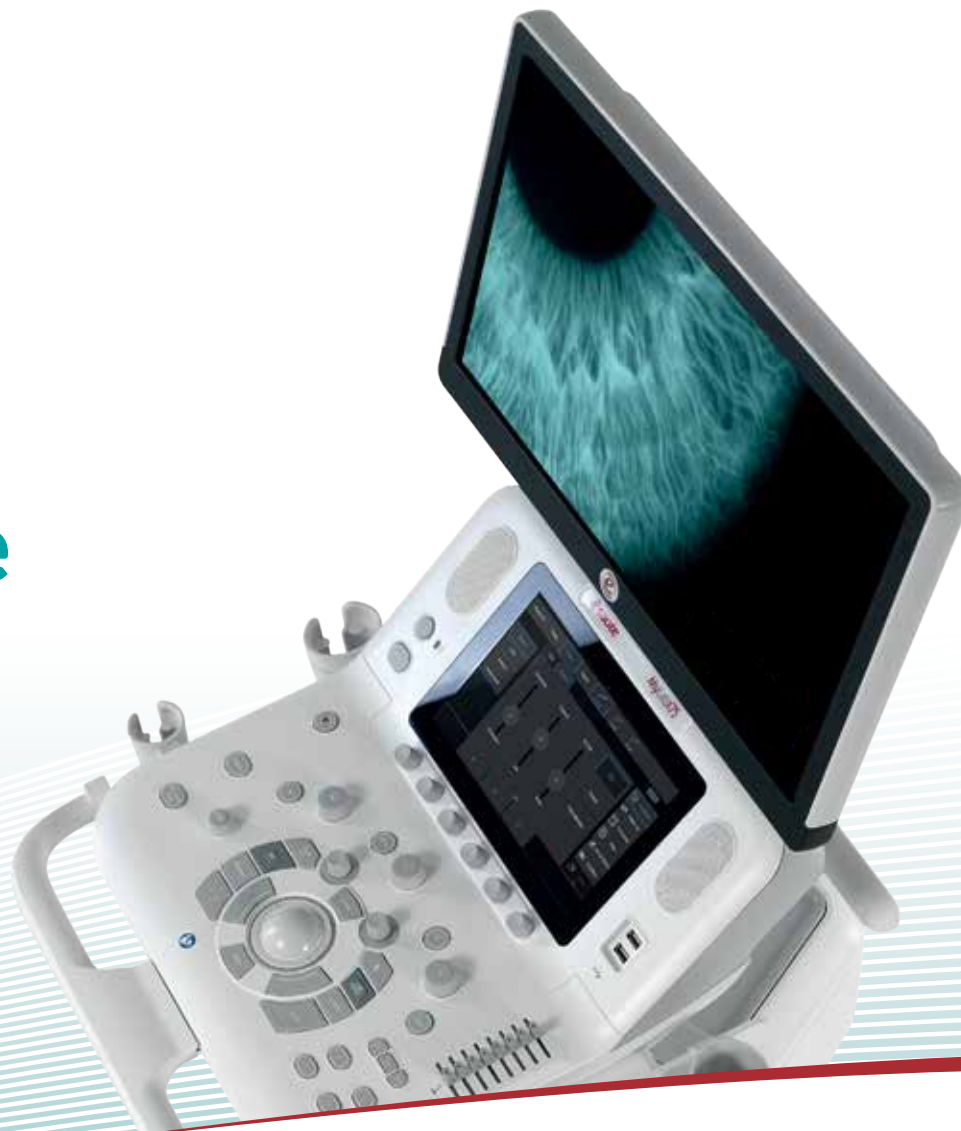


MyLab™X75VET

Enhancing
the experience



NEVER STOP SEEING THE UNSEEN.

esaote
north america
veterinary

Enhancing the experience

Powered by the latest Esaote technology, MyLab™X75 offers ultrasound images with **extraordinary clarity**.

The detail representation and **scanning fluidity** guarantee excellent quality examinations across all applications in General Imaging, Cardiovascular, and Shared Service.

MyLab™X75 allows optimal patient care while increasing **daily productivity** via automatic optimization tools.

Designed with smart ergonomics to be light and silent, MyLab™X75 brings **comfort to patients and operators** in every clinical setting.

Benefit from the advanced technologies provided by MyLab™X75 while maximizing investment and productivity.



COMFORT



PRODUCTIVITY



IMAGE QUALITY



CONNECTIVITY



CUSTOMER CARE



Enhancing comfort every day

Light and Agile Workstation

MyLab™X75 is a powerful ultrasound system specially designed by Esaote engineers to be suitable for any clinical environment.

It is light and compact to be easily moved anywhere with an integrated battery.



Ergonomic and Silent

For over 40 years, Esaote has been constantly focusing on its customer's needs. MyLab™X75 was designed to improve patient and operator comfort.

An intelligent control panel layout and smart ergonomics contribute to reducing work-related musculoskeletal disorders. The impressively silent operational workflow helps to create a quiet work environment.



Productive and Eco-Friendly

MyLab™X75 hardware and software are conceived to optimize examination times.

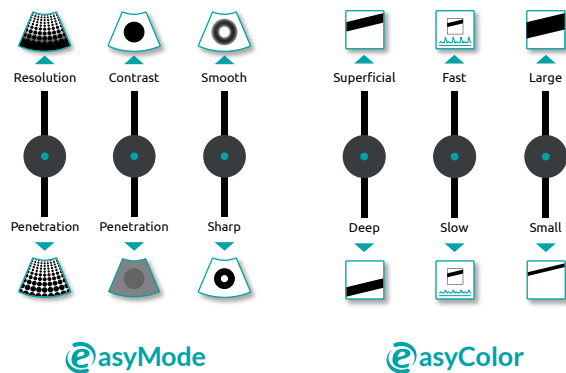
The system is manufactured with a particular attention to the use of eco-friendly materials including the electronic elements to support Esaote's vision of a greener world.

Enhancing productivity

Exclusive @asyMode Solution

This patented Esaote tool helps to optimize images with 3 simple swipes.

@Scan function allows the user to adjust the gain and contrast of the image automatically.



Immediate Doppler Optimization

The MyLab™X75 supports the user with specific tools designed for optimizing exam time during Doppler examinations.

@asyColor is an operational tool that helps optimize the Color Doppler layout with 3 swipes.

The @Doppler automatically adjusts Pulsed Wave parameters to reach an optimized Doppler trace.

Automated Advanced Functions

MyLab™X75 can boost automated advanced functions and diagnostic capabilities in all applications:

- QElaxto 2D and QPack in General Imaging
- AutoEF, XStrain, 2D/4D, QIMT, and QAS in Cardiovascular Imaging
- AutoOB, AutoNT, and AutoIT

Direct Access to Presets

Thanks to dedicated presets, the operator is able to immediately start the examinations by getting the best clinical setting for each application.

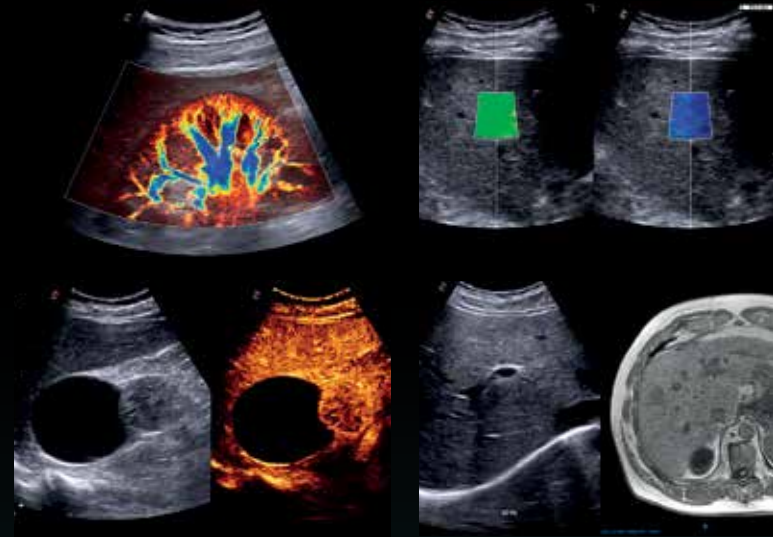
Short-cuts on the touchscreen with direct probe selection are also available.

Enhancing the experience in General Imaging



Outstanding Image Quality

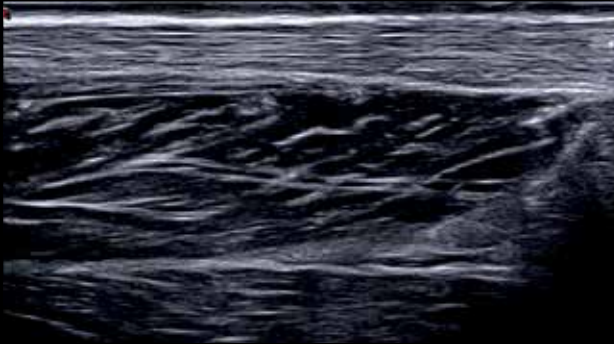
MyLab™X75 combines detailed information and image homogeneity supported by an excellent contrast resolution and a smart management of the multiple depth zones. MyLab™X75 is Esaote's top class system in terms of vascularization imaging and Color Doppler sensitivity.



Comprehensive Liver Assessment

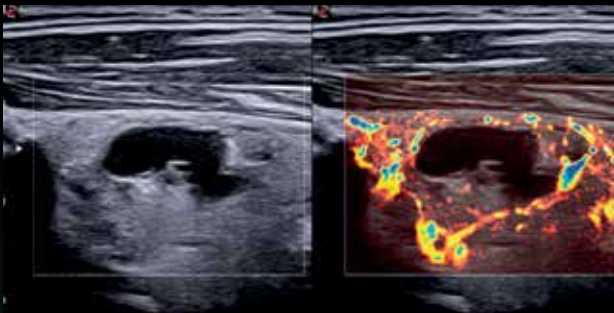
MyLab™X75 enables a complete liver assessment with advanced features such as:

- QElaxto 2D to assess liver stiffness
- microV to enhance tissue vascularization
- CNTI™ and QPack to perform contrast examinations with contrast agent quantification
- Follow-Up Modality to compare any DICOM modality in real-time



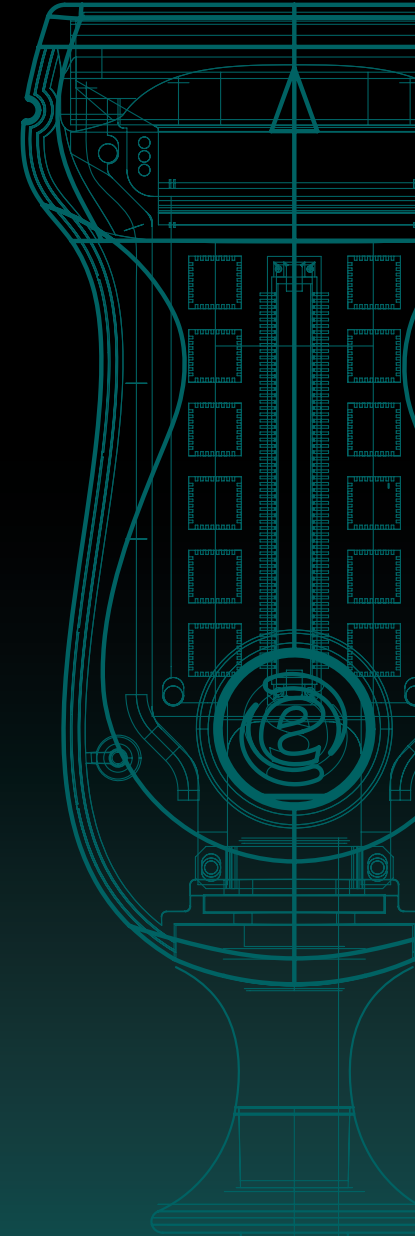
Beyond Clinical Expectations in Superficial Imaging

MyLabTMX75 benefits from the expertise of Esaote in superficial imaging. Thanks to the high frequency IQProbe technology, specialists can take advantage of impressive spatial resolution from deep to superficial areas.



Clinical Excellence in Vascularization Imaging

Both microV and Power Doppler imaging provide reliable information about tissue vascularization due to Esaote's top class system sensitivity.

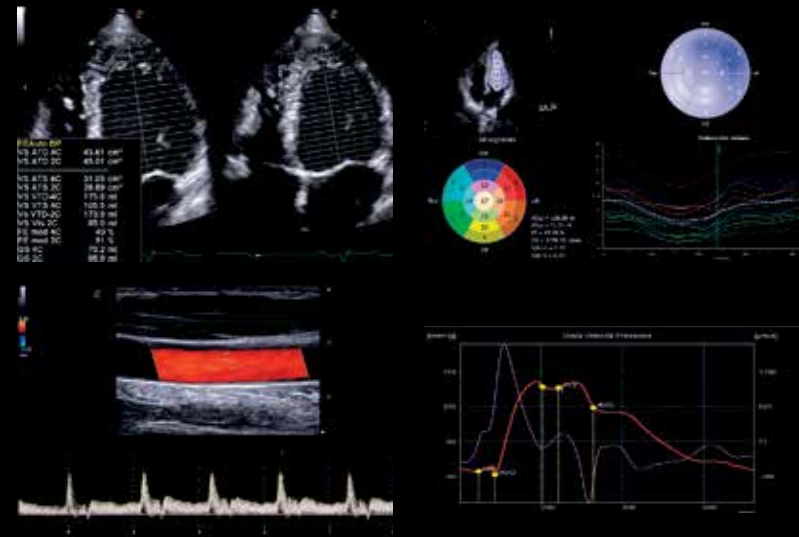


Enhancing the experience in Cardiovascular Imaging



Precise Imaging of Difficult-to-scan Patients

With the Single Crystal probe technology you can address all examination conditions, delivering a clear image to visualize high-speed cardiac structures. The detection of small vessel flows is performed through excellent continuous wave sensitivity.



Immediate Quantification with Zero-click Technology

AutoEF automatically assesses the left Ejection Fraction (EF).

XStrain 2D and XStrain 4D give immediate layout of Global Longitudinal Strain (GLS).

QIMT and QAS extend vascular assessments with automatic measurements of intima media thickness and artery stiffness.

Comprehensive Cardiac Assessments

MyLab™X75 offers extended capabilities in cardiac imaging with Stress Echo and LVO options and Transesophageal explorations.

Enhancing connectivity capability

Telemedicine Capability

MyLab™X75 has been equipped with innovative connectivity tools to support remote connection and image sharing to meet today's challenges.

- **Follow-Up** compares any second-modality DICOM images in real-time
- **@Streaming** safely shares real-time scanning activities with selected viewers
- **MyLab™Tablet** exports the full dataset to any tablet device following the examination
- **MyLab™Desk** enables the review of previous examinations



Contamination Reduction

MyLabRemote exclusive function is the perfect tool to limit any physical contact with the ultrasound device through the duplication of the control panel on various mobile devices.



Remote Technical Support

MyLab™X75 has been designed to provide an optimal user experience through remote assistance, console control sharing, and remote training to quickly and effectively meet any request.



Probes Coverage

S@renity program provides coverage for all standard probes with no annual limits.



On-site Corrective Maintenance

S@renity program provides On-Site Corrective Maintenance that includes labor and necessary spare parts to repair the system.

Our mission is to **protect** and **maximize** the system performance by increasing the **return** on your investment.

Conditions for additional service coverage may vary depending on your country. Please contact your Esaote reference to get the conditions valid for your country. Special probes excluded. Accidental damage of probes is not covered. MyLab™X75 Standard configuration Probe Set: 3 qty spare part failure for accidental damage and peripherals are excluded. Remote service support requires high-speed direct Internet connection and depends on regional availability and speed of connection.





esaote
veterinary
imaging solutions



Esaote North America
11907 Exit Five Parkway, Fishers IN 46037 Tel.800 428 4374, info@esaote.com

For veterinary use only.
MyLab is a trademark of Esaote spa.

Technology and features are system/configuration dependent. Specifications subject to change without notice.
Information might refer to products or modalities not yet approved in all countries. Product images are for illustrative purposes only. For further details, please contact your Esaote sales representative.

Please visit us online
for more information



8.21X75VetV1