

PERFORMING AN ELIMINATION DIET TRIAL

OBTAIN A THOROUGH DIET HISTORY AND ENSURE ALL POTENTIAL ALLERGENS ARE REMOVED DURING THE TRIAL

- Primary diet
- Treats
- Supplements
- Table foods
- Access to other pets' food
- Flavored chew toys
- Flavored medications
- Foods used to administer medications

RECORD BASELINE ASSESSMENT OF CLINICAL SIGNS

- Canine Pruritus Severity Scale (owner assessment)⁴
- Canine Atopic Dermatitis Extent and Severity Index (CADESI)-4 (veterinary assessment)⁵
- Nestlé Purina Fecal Scoring System

INTRODUCE PURINA® PRO PLAN® VETERINARY DIETS EL ELEMENTAL FORMULA GRADUALLY OVER A FIVE- TO SEVEN-DAY PERIOD

EL ELEMENTAL

LENGTH OF ELIMINATION TRIAL:

- 8-12 weeks for dermatologic signs (minimum of one month beyond resolution of a skin infection)
- 2-4 weeks (or longer if improving) for gastrointestinal signs
- Recheck patient monthly to assess progress relative to baseline (more frequently if pet is being treated for an active infection)

**IF NO RESPONSE BY
8-12 WEEKS, CONSIDER
DIAGNOSTIC WORKUP,
TREATMENT AND
NUTRITIONAL MANAGEMENT
OF PATIENT WITH ATOPY**



POSITIVE RESPONSE TO TRIAL = 50% OR GREATER IMPROVEMENT IN DERMATOLOGIC/GASTROINTESTINAL CLINICAL SIGNS

- Length of time to expected improvement may be variable (2-12 weeks)
- Only partial improvement may be due to a combination of adverse food reaction and atopy

PERFORMING A DIET CHALLENGE

- A diet or ingredient challenge:
 - Confirms a diagnosis of adverse food reaction
 - Determines which specific foods/ingredients should be avoided
- Challenge by slowly reintroducing the original diet or individual ingredients
- Monitor for recurrence of clinical signs – time to relapse may be within hours or up to two weeks
- **If an adverse reaction occurs, resume feeding EL Elemental formula exclusively and monitor for improvement to confirm diagnosis**
- **Continue feeding EL Elemental formula or another appropriate Purina Pro Plan Veterinary Diets canine formula based on results of food challenge**

EL ELEMENTAL

HA HYDROLYZED

Learn more at
www.PurinaProPlanVets.com

4. Hill, P.B., Lau, P., and Rybníček, J., 2007. Development of an owner-assessed scale to measure the severity of pruritus in dogs. *Vet. Dermatol.* 18, 301–308.

5. Germain, P.A., Prelaud, P., and Bensignor, E. "CADESI (canine atopic dermatitis extent and severity index) reproducibility." *Revue de médecine vétérinaire* 156.7 (2005): 382.

For more information, visit www.PurinaProPlanVets.com
or call us at 1-800-222-VETS (8387),
8:00 am to 6:00 pm CST, Monday-Friday.

PURINA TRADEMARKS ARE OWNED BY SOCIÉTÉ DES PRODUITS NESTLÉ S.A.
ANY OTHER MARKS ARE PROPERTY OF THEIR RESPECTIVE OWNERS. PRINTED IN USA.
VET6950-0521

 **PURINA**
PRO PLAN
VETERINARY DIETS

EL
ELEMENTAL

MEDICAL INDICATIONS

Multiple Indications for a
Wide Range of Patients

- ✓ Elimination diet trial
- Adverse food reaction
 - Food allergic dermatitis
 - Food allergic gastroenteritis
 - Food intolerance
- Inflammatory bowel disease
- ✓ Idiopathic chronic enteropathy
- ✓ Protein-losing enteropathy
- Short bowel syndrome



CANINE ADVERSE FOOD REACTIONS

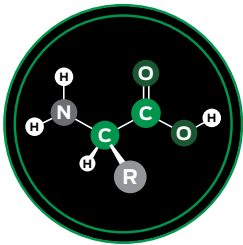
INDICATION RELEVANCE

Nearly 40% of dogs visiting surveyed veterinary clinics were seen because of a skin or gastrointestinal issue.¹

Approximately 8% of dogs with suspected allergic dermatitis were diagnosed with an adverse food reaction after presenting to a dermatology referral service.²

In a recent study, approximately 2/3 of dogs with chronic enteropathies responded to dietary changes alone.³

DIETARY MODIFICATION



Amino acid-based enteral diets can provide complete and balanced nutrition without antigenic stimulation. These diets are **ideal for use in elimination diet trials** to help diagnose adverse food reactions.

DIET TRIALS

Amino acid-based enteral diets **may help reduce potential complicating factors** in elimination diet trials including:

Sensitization to multiple allergens

Failure to select novel proteins

Persistent allergenicity of hydrolysate

PURINA® PRO PLAN® VETERINARY DIETS EL ELEMENTAL

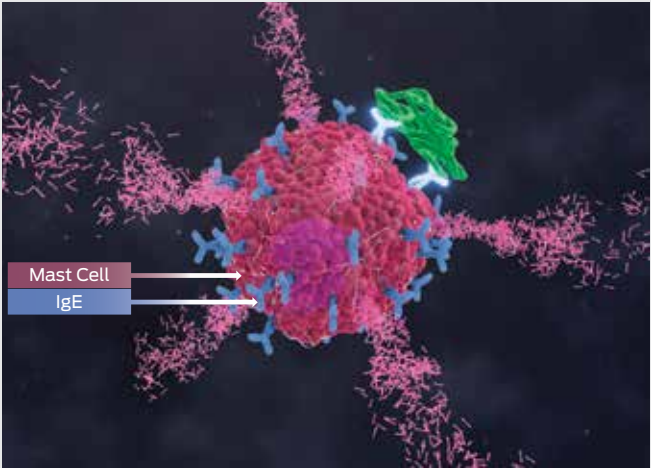
HEALTH BENEFITS

GASTROINTESTINAL HEALTH AND ADVERSE FOOD REACTIONS		
BENEFIT	NUTRIENTS	MECHANISM
• Helps minimize risk of an adverse food reaction, including allergic reactions and food intolerances	• Purified amino acids • Low-allergen carbohydrate sources	• Formulated with purified amino acids and low-allergen carbohydrate sources to minimize risk of allergic reaction • Post-manufacturing testing conducted to ensure trace levels of intact proteins do not exceed 0.1%
• Promotes optimal nutrient digestion and absorption	• Limited fat • Medium-chain triglycerides	• Highly digestible to promote optimal nutrient absorption • Limited fat to aid digestion for dogs with compromised gastrointestinal tracts • Contains medium-chain triglycerides (10.70 - 17.27% of fat), a source of fat which is easily digested and absorbed to provide readily available energy
DERMATOLOGIC HEALTH		
BENEFIT	NUTRIENTS	MECHANISM
• Helps maintain and protect the skin barrier	• Omega-3 fatty acids • Omega-6 fatty acids • Vitamin A • Zinc	• Omega-3 and Omega-6 fatty acids help promote healthy skin and coat • Vitamin A and zinc are essential factors in collagen synthesis and skin cell proliferation and renewal

A CLOSER LOOK

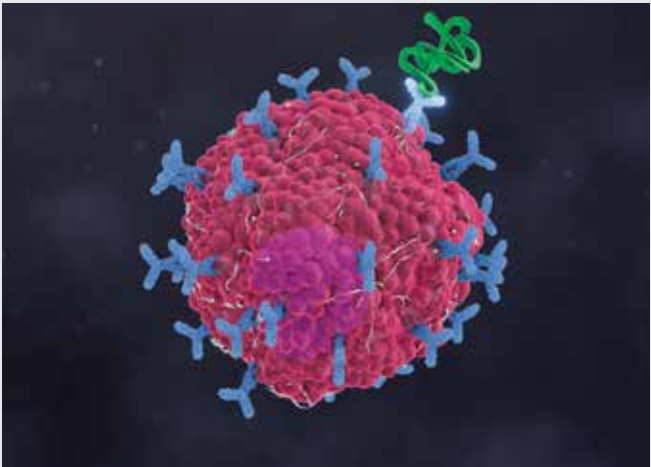
A GLIMPSE INSIDE THE SCIENCE

IMMUNE RESPONSE TO INTACT FOOD ALLERGEN



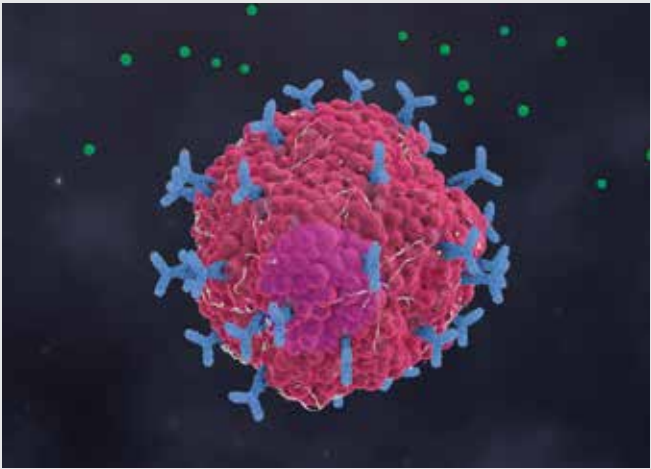
- In dogs sensitized to a specific food allergen (typically an intact protein), the allergen is bound by IgE on the surfaces of mast cells, stimulating degranulation and releasing histamine.
- **The antigen must “bridge” two IgE antibodies** bound to a mast cell to stimulate degranulation.
- Mast cell degranulation causes many of the clinical signs associated with food allergies.

IMMUNE RESPONSE TO HYDROLYZED PROTEIN



- Hydrolysis is a reliable method which results in the **reduction of size and alteration in shape of antigenic peptides**.
- These alterations preclude cross-bridging of IgE molecules and subsequent degranulation of mast cells, thus preventing an allergic reaction.
- Additionally, hydrolyzed proteins maintain their full nutritional value.

IMMUNE RESPONSE TO AN AMINO ACID-BASED ENTERAL DIET



- In rare instances, a dog may fail an elimination diet trial performed with a hydrolyzed diet.
- EL Elemental formula is built with purified amino acids, **minimizing the risk of mast cell degranulation and associated clinical signs**.
- EL Elemental formula provides **complete and balanced nutrition for canine growth and maintenance**, removing dietary protein antigens without sacrificing palatability and convenience.

1. Veterinary Landscape Study 2020
2. Chesney, C.J. "Food sensitivity in the dog: a quantitative study." Journal of Small Animal Practice 43.5 (2002): 203-207.
3. Allenspach, K., Culverwell, C., and Chan, D. "Long-term outcome in dogs with chronic enteropathies: 203 cases." Veterinary Record 178.15 (2016): 368.