

# 5.04" Splicing Micro-LED



5.04" X2 Splicing

Resolution (pixel)	480×320
PPI	114
Border (U/L/R)(mm)	0.03/0.03/0.03
Thickness (w/o Cover)(mm)	1.1
NTSC	>116%
Application	Automotive

# 5.04" Micro LED\*4(window)



Resolution (pixel)	<b>480×320</b>
PPI	<b>114</b>
Border (U/L/R)(mm)	<b>0.03/0.03/0.03</b>
Thickness (w/o Cover)(mm)	<b>1.1</b>
NTSC	<b>&gt;116%</b>
Application	<b>Automotive</b>

# 9.38" Transparent Micro LED



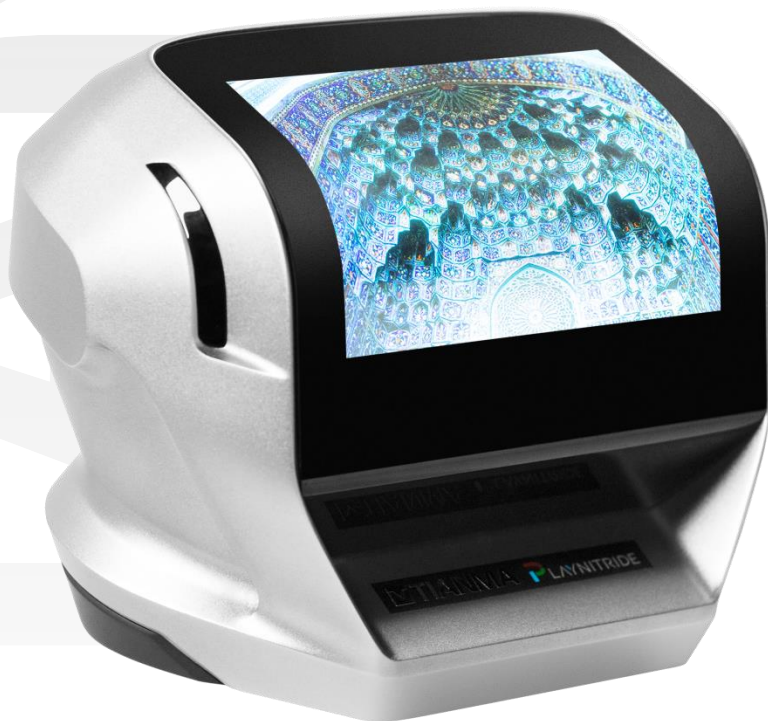
Resolution (pixel)	960×480
PPI	114
Brightness(cd/m²)	800
TFT Type	LTPS
Drive Method	AM
Transparency	>70%
Application	Automotive

# 7.56" Flexible Micro LED R5 mm (Internal)



Resolution (pixel)	<b>720×480</b>
PPI	<b>114</b>
Brightness (cd/m <sup>2</sup> )	<b>&gt;600</b>
TFT Type	<b>LTPS</b>
Drive Method	<b>AM</b>
Radius (mm)	<b>5</b>
Application	<b>Automotive</b>

# 7.56" Flexible Micro-LED



Resolution (pixel)	<b>720×480</b>
PPI	<b>114</b>
Brightness (cd/m <sup>2</sup> )	<b>&gt;600</b>
TFT Type	<b>LTPS</b>
Drive Method	<b>AM</b>
Radius (mm)	<b>50</b>
Application	<b>Automotive</b>