

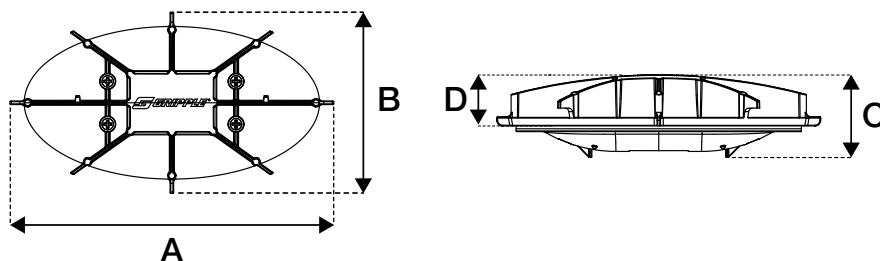
Self-sealing anchoring system for the security of geomembranes; prevents membrane movement in uplift or draw down applications.

FEATURES / BENEFITS

- **Strong** – ‘locks’ into the engineering properties of the substrate, providing resistance to external forces increasing slope stability
- **Durable** – constructed with inert/chemical resistant materials for long lifetime in most conditions
- **Self-sealing** – clamps around membrane with minimal disturbance, reducing the need for welds, trenching and sand bags
- **Compatible** – capstan ‘tie-off’ feature allows the connection of other units in a larger grid across the site, and other geosynthetics e.g. geocells, to eliminate sliding
- **Safe** – metal edges are fully covered by plastic
- **Versatile** – can be used with a wide range of geosynthetics and membranes as well as puncture repairs
- **Resistant** – two part system can be fixed around the membrane with two or four points, delivering high clamping force and resistance to ingress

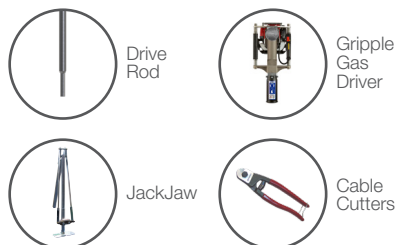


SPECIFICATION



Dimension	Length (in)
A	8.94
B	5
C	2.28
D	1.57

INSTALLATION TOOLS



For more information contact us or visit our website - www.griipple.com

MATERIALS

Top plate – High Density Polyethylene (UV Stabilised)

Bottom Plate – High Density Polyethylene (UV Stabilised)

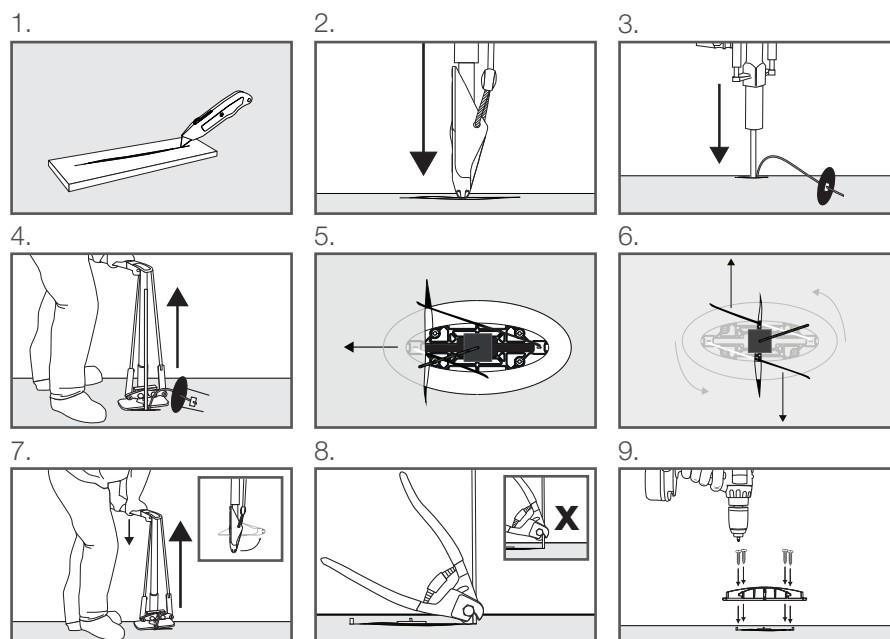
Gasket – Closed Cell Neoprene EPDM Foam Blend with Solvent Acrylic Adhesive Tape

Screws – Steel with Delta-Protekt® KL100 Finish

Fibre washers – Vulcanised Fibre

Cable Ties – Nylon 66

INSTALLATION



The longevity depends on location factors and soil, water & climate conditions as well as the risk of erosion onsite. PP materials are UV protected, designed for long life.