



AMPED REPLAY

ENHANCED VIDEO PLAYER FOR POLICE INVESTIGATORS

- Convert and play videos from hundreds of proprietary CCTV/DVR formats, body worn, dash cam, mobile phones, covert video, drones, social media, and more
- Apply quick corrections to images
- Redact and annotate images for investigations and media release

WHAT IS AMPED REPLAY?

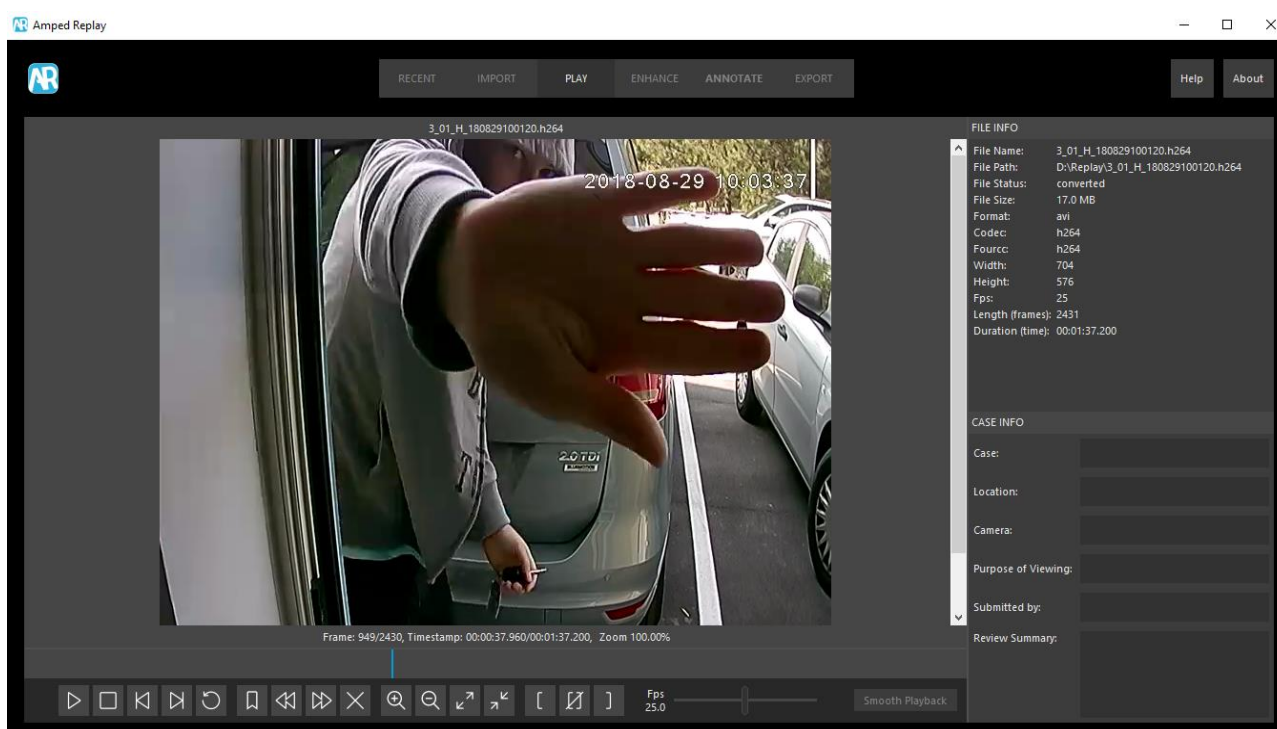
[Amped Replay](#) is an enhanced video player that allows police investigators, detectives, frontline officers, first responders, security personnel and CCTV operators to conduct a first-level analysis of their video evidence, bridging the gap between a player and a forensic analysis suite. It empowers investigators to view their video footage quickly and expedite their case, ruling out what is and isn't pertinent footage in the first instance.

Amped Replay was designed after consultation with frontline investigators and video and image analysts, ensuring that the simple-to-use interface answers the requirements of easy CCTV playback, fast processing, and the output of a court-ready product.

It includes Amped Software's powerful DVR video conversion engine to play and view video without the need for other non-compatible, legacy, or proprietary player software, cutting down on the time it takes to experiment with proprietary CCTV players. Amped Replay allows for the exporting of video and images in playable formats and includes the ability to generate a report ideal for case building and disclosure.

Amped Replay also provides basic correction, redaction, and annotation tools to allow police investigators to clarify details and present professional and polished results, whether they are being used as part of a case, forwarded to another unit or intelligence analyst, or sent to the media for identification.

With this innovative solution, officers no longer need to rely on office hours and the availability of experts in the forensic video lab to perform basic tasks such as converting videos, now allowing those experts to work on more complex processing tasks.



WHY AMPED REPLAY?

CCTV and video link in to the “golden hour” principle of evidence collection alongside traditional forensics, witness statements and physical evidence gathering. It can be one of the more impactful forms of evidence and oftentimes the only source of evidence in a case (such as missing persons). It’s the first port of call for any investigator building a case. Time is often crucial and the quicker an investigator can obtain and view footage the better.

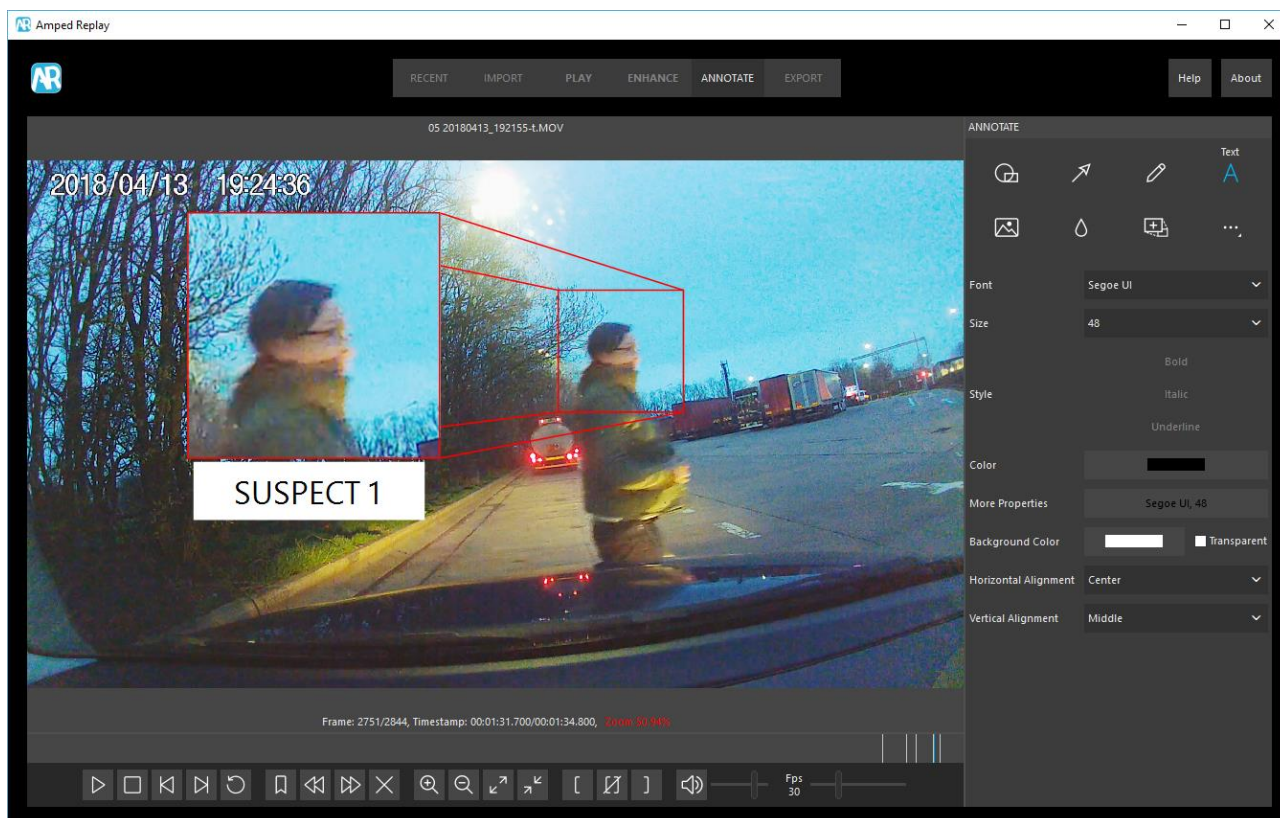
This means that the first pieces of evidence could be video and an investigator will want to view it quickly in order to progress with any further lines of enquiry – not always possible with proprietary formats that require some processing before they are played and a lot of scientific support units will only work office hours, resulting in lengthy delays in the viewing of potentially crucial video evidence.

Video can often be an integral part of gathering intelligence and building a bigger picture of policing priorities. The varied amount of video formats means playing relevant footage can be difficult, resulting in potential intelligence being missed or discarded.

Amped Replay empowers investigators to view their video footage quickly and expedite their case, ruling out what is and isn’t pertinent footage in the first instance, cutting down on the time it takes to experiment with proprietary CCTV players. Drag and drop the footage into Amped Replay and it is ready to view.

Basic enhancement and annotation features give investigators a way to triage video footage, clarify details and present professional and polished results, whether they are being used as part of a case, forwarded to another unit or intelligence analyst or sent to the media for identification.

Whilst you don’t need to have knowledge of forensics to use it, you can be assured that everything you do in Amped Replay is forensically sound. Amped Replay automatically ensures original evidence maintains its integrity and continuity with every load, conversion and export. Every enhancement and annotation feature works as a filter leaving the initial file untouched, and we have made sure that you are covered when it comes to disclosure and integrity through the reporting feature and Amped Software’s unique CCTV video conversion engine. We’ve done all the hard work behind the scenes to make sure you can process video and images effortlessly and worry-free.



Amped Replay is also a great addition to your forensic lab should you need an application that compliments the use of Amped FIVE but allows for a lightweight and user-friendly video and image solution. This way, newer members of your team or those that don't use Amped FIVE as often have a means of working with video quickly and comfortably.

ADAPTING TO MODERN POLICING

A police investigator might be juggling numerous cases and responsibilities at once, all with deadlines and prosecutors or senior investigators demanding results (even members of the press or public if it is a high-profile case). They are expected to perform more and more digital duties such as basic mobile phone extraction, cybercrime investigations and, of course, CCTV and video.

Whether or not it is a serious investigation or a low-level crime, video evidence can arrive in a multitude of forms – this is the first hurdle to add delays and frustration. A DVR might only write to CD-ROM and one camera at a time or, worse still, a certain number of hours, minutes, or seconds at a time. It could be on a USB drive, SD card, an email or involve a member of support staff retrieving the footage – all of which create initial hurdles for an investigator to overcome. To add to this, there might be a huge amount of digital media to sift through, which, at this point, may or may not be evidential but must be viewed.

A large-scale investigation, such as a murder or a live major incident, can rely on tracing a suspect or victim's movements via video and CCTV and doing so quickly. Viewing one piece of video evidence could tell investigators which direction a subject has travelled, leading to further gathering of video evidence from that location. Time is crucial in this scenario, because CCTV/DVRs often have over-write settings – the longer it takes you to view a piece of video that might show a subject's movement, the more likely it is that any further evidence may be overwritten by the time it comes to retrieving that footage. In a live, on-going incident, viewing footage quickly could be a life saver.

For speed and when under pressure, investigators often choose to settle with lower quality images, often taking photographs of a computer screen which can result in the production of poor-quality images that fail to produce meaningful results. Viewing video can be a time-consuming and lengthy process, requiring a lot of concentration in order to look for a proverbial needle in a haystack and there is a need for a system to support officers, so they gain more independence with images and video footage. With Amped Replay, the pressure is off when it comes to video evidence.

MAIN FEATURES

Simple to use

Amped Replay is designed to be intuitive and easy to grasp with a sleek, uncluttered, sophisticated interface and a drag and drop system. Amped Replay offers basic enhancement and annotation tools but nothing over-complicated or intimidating.

Quick

View crucial video evidence as soon as you need it. With a simple drag and drop, video files are loaded and ready for review.

Compatible

Amped Replay uses the same conversion engine as Amped FIVE and Amped DVRConv. It works with any type of image and video data, from CCTV recordings to mobile phones, and supports nearly any image and video format, including automatic conversion of most proprietary formats typically used in video surveillance.

Investigator Focused

Amped Replay is designed to fit the needs of the modern frontline investigator and bridges the gap between a video player and an enhancement and analysis tool. It allows for the reduction in backlogs for the dedicated forensic video units, refining their workload while giving independence to officers with regards to video evidence.

Disclosable

Amped Replay allows for the export of images and videos while also providing the ability to generate a report following playback, correction, or annotation of video.

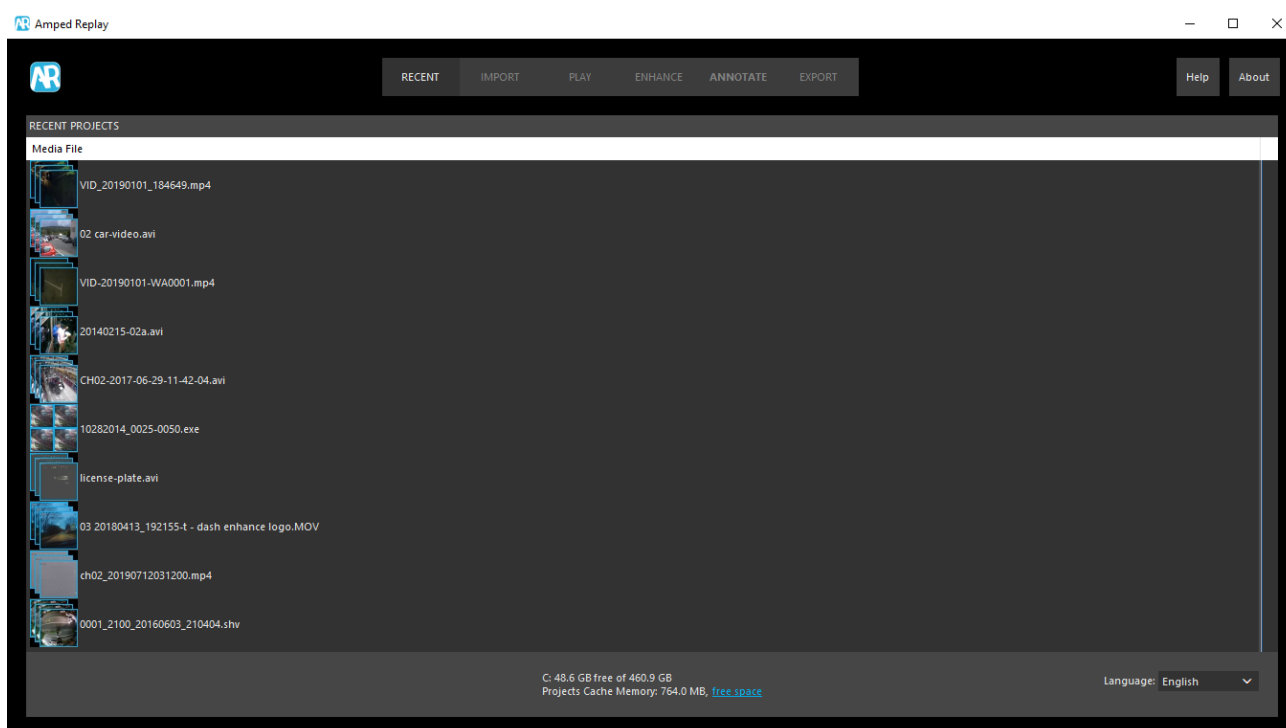
Flexible and Affordable

Amped Replay is a single solution and does not require additional plug-ins, third-party software, or special expensive hardware. There is just one platform to learn, maintain and deploy on hardware you already own. Because Amped Replay is compatible with standard PCs, the time and cost to deploy are minimal. As hardware standards change quickly, Amped Replay does not bind you to a platform that will soon be obsolete or cannot be upgraded without major expense (if at all).

TOUR

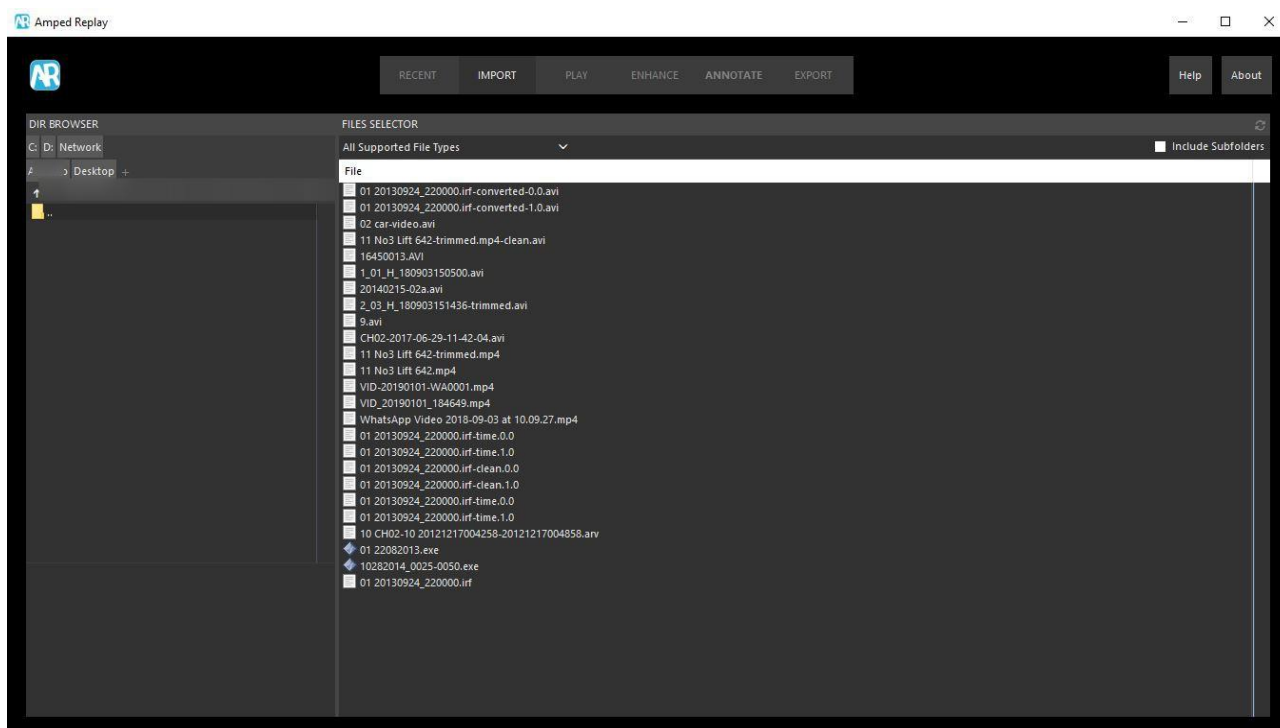
In Amped Replay there is one very simple and defined workflow which guides the user from the beginning to the end of the case in a few logical steps.

THE RECENT TAB



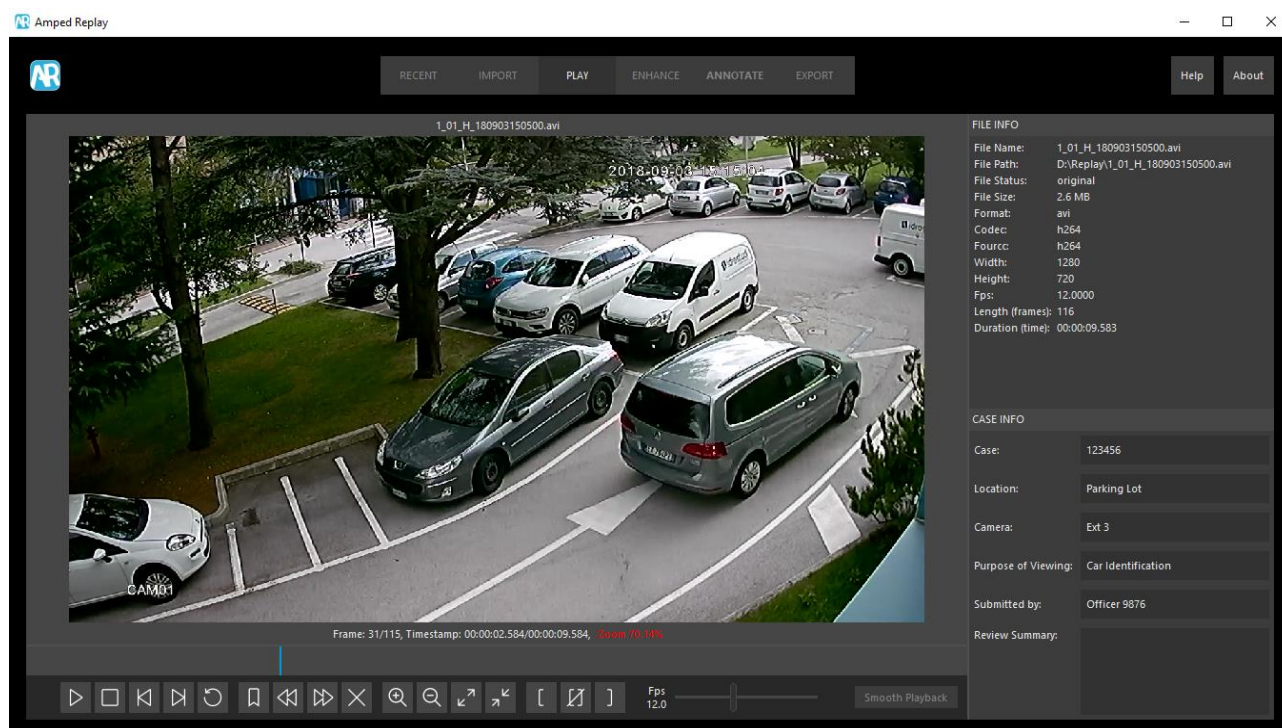
In the recent tab, you can see the latest files you have been working on. Every file and any processing applied is automatically saved as you work. It is also possible to switch a full view where you can see the details of the cases before opening them.

THE IMPORT TAB



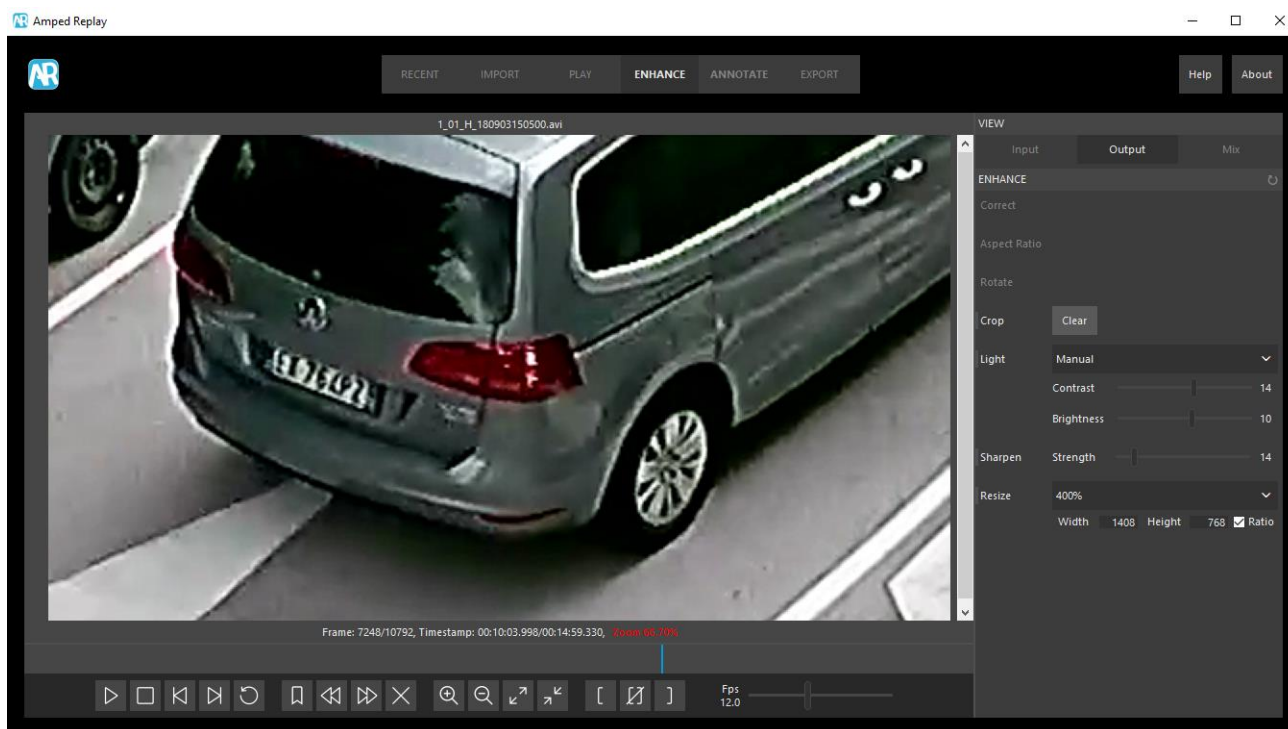
In the Import tab you can browse and preview all files in a folder (optionally including the subfolders), search for them by type, name or extension. It is also possible to bookmark specific folders for easy access. Files can also be loaded by simply dropping them into Amped Replay from Windows Explorer. There's also a refresh button to update the view.

THE PLAY TAB



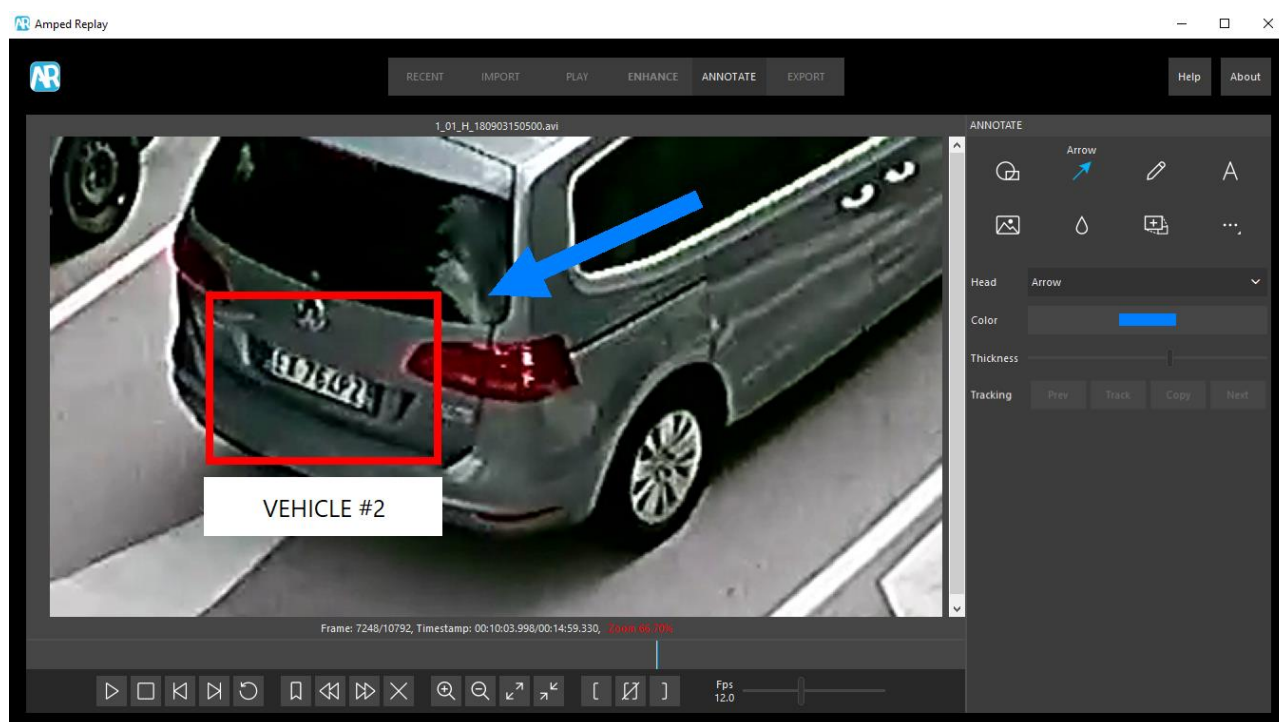
The Play tab allows to display images and videos. From there you can see basic file metadata, like camera model (if available), duration and frame resolution. You can add optional information about the case, bookmark frames of interest or select a frame range from a longer video. It is also possible to select the camera to view, if there are multiple video streams, and enable or disable audio. The Play Tab includes an embedded hardware-accelerated engine which offers smoother video playback for the most common video formats. When an incompatibility between the engine and the video format is detected, the button is automatically hidden.

THE ENHANCE TAB



In the Enhance tab you can apply basic processing to the images and video: Correct Jagged Edges (Deinterlace), Correct Stretched Video (Line Doubling), Aspect Ratio, Rotate, Crop, Light Adjustment (Automatic or Manual Contrast Brightness), Sharpen, Resize. Several tools feature an “auto” mode that configures them automatically based on detected media properties. Many tools feature an “auto” mode and their settings are automatically adjusted based on the detected media properties. Every setting automatically adjusted is duly documented in the report.

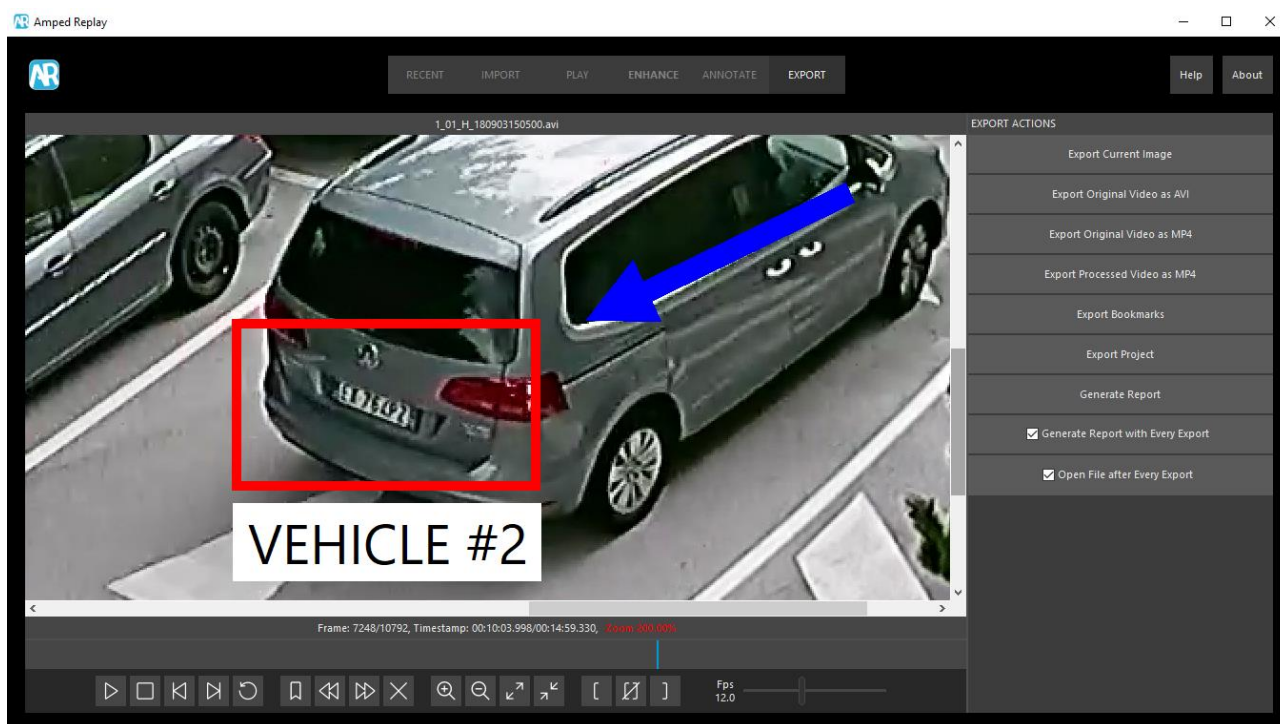
THE ANNOTATE TAB



In the Annotate tab, you can draw on images and frames using various shapes (rectangle, circle, line, arrow, free form), add text, add a logo, apply fixed or tracking redaction (blur or pixelate) or magnify a specific area, using either nearest-neighbor (default) or bicubic interpolation. Annotations can be applied independently to frames or to the entire video.

Tracking can be carried out in several ways: manual (meaning that the annotation moves according to the mouse movements), software assisted (meaning that it will track the selection set on a frame on the following ones), or keyframe based (which allows you to add keyframes to track an object and interpolate the size and position between keyframes).

THE EXPORT TAB

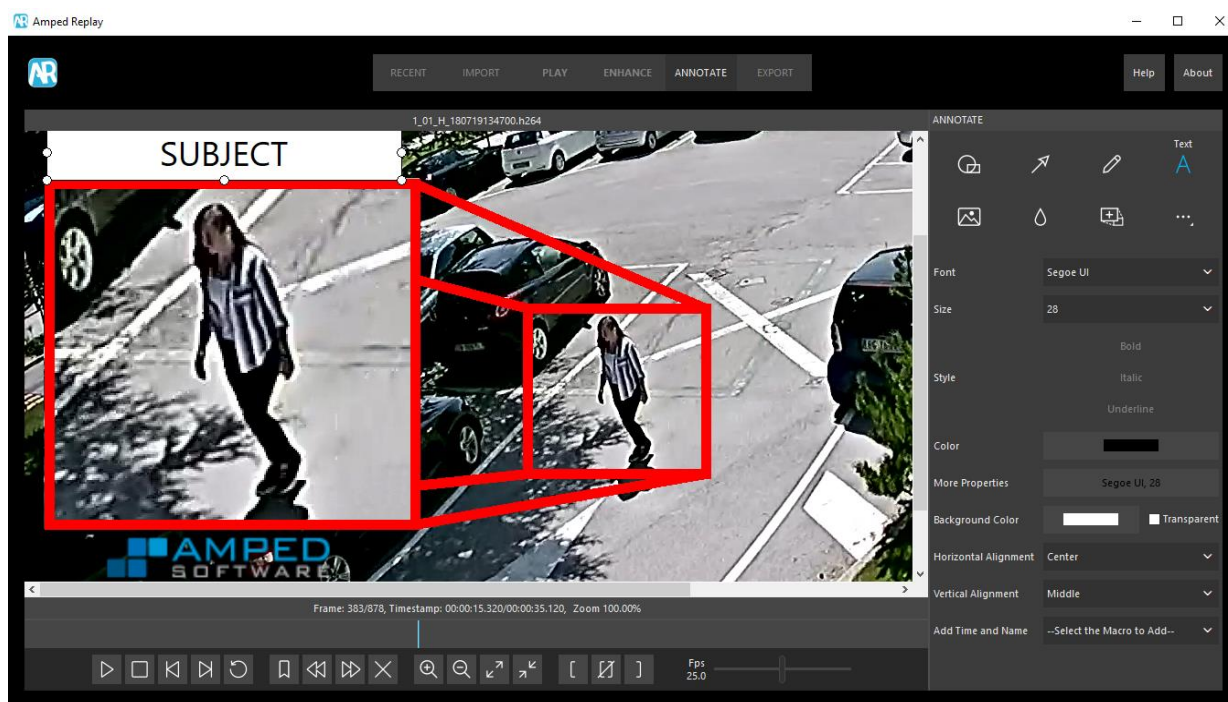


The Export tab allows to export the result of your work, either as static images, as processed video, or simply exporting a proprietary video (possibly trimmed) in a standard playable format with no or minimal loss of quality. It is also possible to export a report which includes the details of the case and the bookmarked images, as well as the whole project in the form of an .arp (Amped Replay Project) file.

CASE EXAMPLES

CASE 1

A frontline investigator is dealing with a theft. CCTV is handed to them on a disc by the owner of a premises involved in the case. The CCTV is known to capture the suspect, but it is in a proprietary format and there is no player. The suspect is unknown.



The investigator needs to play the footage and produce an image of the suspect for the morning briefing and for the “Caught on Camera” section of the force website for identification, but standard media players won’t play the format and the CCTV unit is closed.

Using Amped Replay, the investigator drags and drops the footage into the player, and it is immediately decoded and playable. They easily navigate to the relevant time on the footage and locate the best image of the suspect before adding a bookmark. Next, they use the Enhance tab to sharpen the image and then, using the Annotate tab, the suspect is labelled and highlighted. The image is then exported along with the video using the Export tab.

The image is then shown in the morning briefing and the web team have the image for the website quickly. The image is clear and professional-looking, and the entire processing was done in less than an hour without relying on the CCTV unit who may have had to prioritize more serious cases above this one.

Example Application. A video is taken from a CCTV. A subject is highlighted, magnified, and annotated. The organization logo is superimposed on the image before exporting.

CASE 2

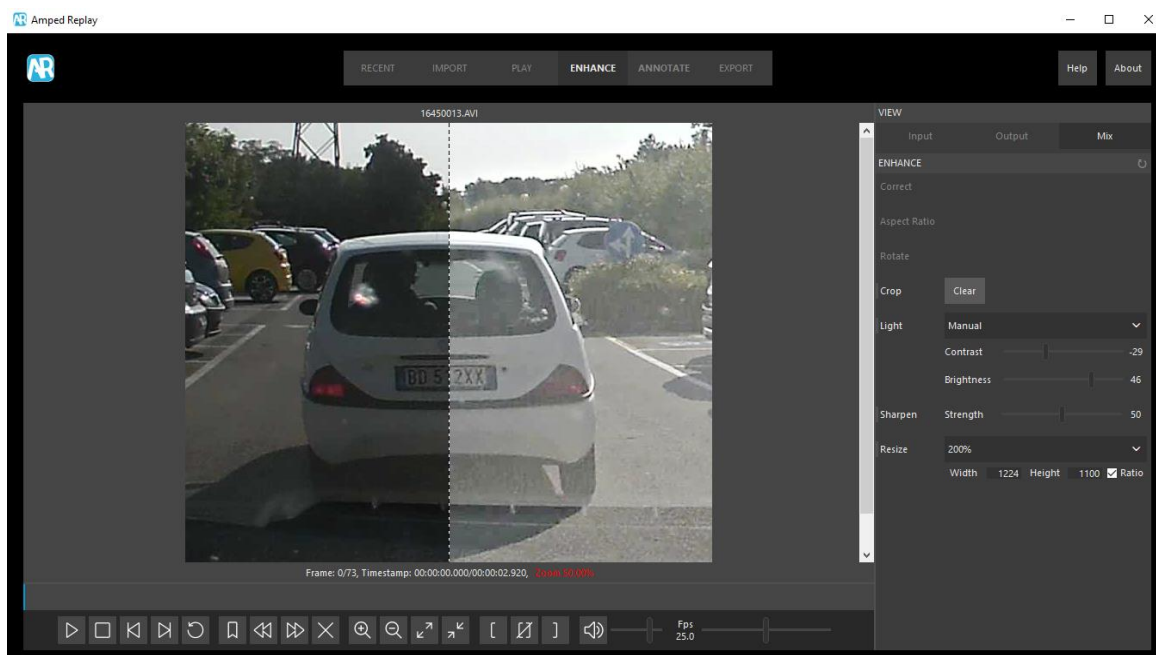
A team of detectives are investigating a number of armed robberies and serious assaults across the force that appear to be linked. There is video evidence from multiple locations and different sources, but the group of suspects has not yet been identified and caught. The suspects wear masks and dark clothing and use a dark colored vehicle to travel to and from the location. A member of the public has handed footage of this vehicle to the police, recorded on their dashcam as the vehicle was driving erratically in front of them in the location soon after the most recent robbery.

The team needs to gather their information together as intelligence in order to further their investigation and make arrests. The video from the dashcam has arrived and it captures a number plate, but the footage is very dark, and the plate isn't clear. One of the detectives needs to check if this can be recovered from the footage, however the CCTV unit are all busy and the footage won't be processed for weeks.

The detective loads the footage into Replay and is able to select the range of the footage in which the vehicle is visible. Using the Enhance tab, they are able to make the video brighter and sharper to make the license plate more easily readable even when printed. The image is exported and passed on to intelligence analysts.

The intelligence analysts find the license plate is a false plate, however automatic number plate recognition cameras have tracked the vehicle to a residential area and a routine patrol spots it sitting outside an address. There is now enough intelligence to allow for an early morning raid at the property the next day and the police arrest several suspects and retrieve a firearm. **The ability for the team to clarify the footage quickly in Replay after the last incident allowed the detectives to build intelligence quickly before being able to promptly act upon it.**

Example Application. A car is filmed by a dash camera. The license plate is made more readable by adjusting contrast, brightness, sharpening and resizing the image.



CASE 3

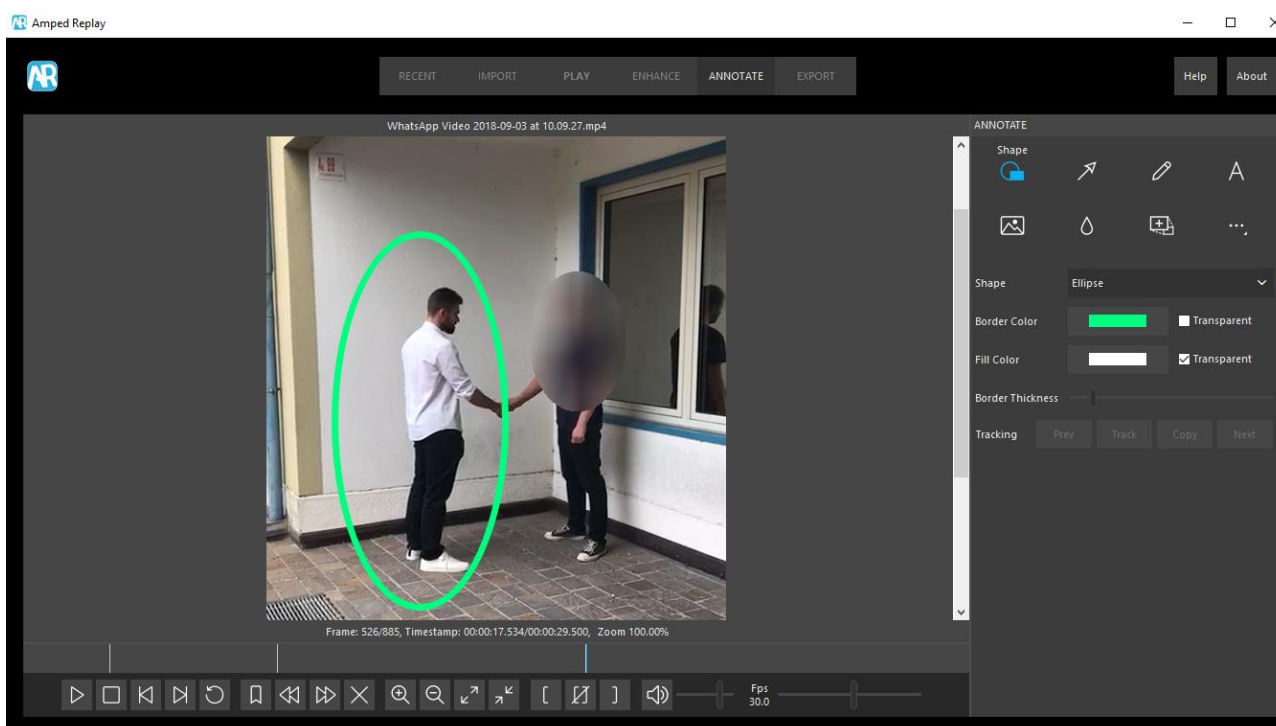
There has been a large-scale major incident in a busy city and the counter terrorism team is responding. There are multiple casualties and a large amount of CCTV, mobile phone footage, dash cam recordings and body worn video from the scene. The team has arrested one suspect, but another is still outstanding.

The team needs to quickly sift through what footage is relevant and can provide further information to apprehend the other suspect and cross check with their intelligence department. The information must also be shared with other agencies and forces, as well as the media and public.

Using Amped Replay on multiple shared network computers, the team quickly drags and drops video into the player for quick and easy viewing. Anything relevant is bookmarked and exported into a shared folder using the bookmark tool and the export function. Footage and images can be easily annotated before export for the quick absorption of information. Images that are for releasing to the press, the public or external agencies are blurred and pixelated to protect sensitive information.

The ability to quickly view footage within Replay allows for the investigation to progress rapidly and the immediate sharing of intelligence with outside agencies and neighboring police forces. The information is very quickly collated, made easier to understand thanks to the reporting and annotation tools and an arrest is made. Sensitive information is protected using the redaction tool and reports are generated for disclosure and information recording. Amped Replay facilitated the prompt viewing of video evidence, saving crucial time in a critical situation.

Example Application. A suspect is filmed having discussions with another person. The suspect is highlighted in the image, while the privacy of the other person is protected with redaction, by blurring or pixelating the face.



TRAINING COURSES

Amped Software [training courses](#) provide hands-on training on the use of Amped Software products as well as provide insight into the challenges users face in forensic video and digital multimedia evidence processing. Our courses are delivered worldwide by experienced instructors, in-person or live online, in groups with users from multiple organizations or in private organization-specific sessions.

INVESTIGATING VIDEO EVIDENCE

This is an entry-level [course](#), designed for investigators, frontline officers, security personnel, CCTV operators and first responders, who work with video evidence during their investigations. It is a mixture of lectures and hands-on with practical or simulated cases using Amped Replay. It focuses on implementing a forensically sound firm legal process for using and reporting on image and video evidence in daily investigations. This course provides students with the theory and the basics of image processing, so that they will learn how to convert proprietary video files, apply basic corrections to images, and prepare the evidence for presentations with redactions and annotations. The challenges and pitfalls faced when using digital multimedia evidence in investigations will also be discussed. Students will obtain the knowledge and skills required to properly examine and process image and video evidence, backed with a workflow which is forensically sound and courtroom admissible.

This course is offered as In-Person Training or Live Online Training.

PURCHASE INFORMATION

APPLICATION

Kind of Data	Types of End Users
<ul style="list-style-type: none"> • CCTV • Drones • Body Worn Cameras • Dash Camera • Mobile Phones • Covert Video • Social Media • Digital forensics investigations / personal media • Internet search / Open-source intelligence 	<ul style="list-style-type: none"> • Frontline Officers • Detectives • Investigators • Support Officers • Major Crime Teams • Counter Terrorism Units • Roads Policing Units • Prosecution Teams

MATERIAL AND LICENSING

Amped Replay is provided as a perpetual or subscription license, delivered electronically. For each license seat purchased the software can be installed on a single machine but used by multiple users. You can easily move the license to another machine by uninstalling it and deactivating the license on one machine before activating it on another. Alternative licensing methods can be evaluated upon request. The perpetual license guarantees that, once purchased, the software will keep working even if the Software Maintenance and Support (SMS) is expired (in that case, the user will lose access to new versions and technical support). On the other hand, the subscription license requires the user to renew the subscription to keep using the product, which is always made available in its most recent version. More information on the license terms and conditions can be found [here](#).

SOFTWARE MAINTENANCE AND SUPPORT (SMS)

Software Maintenance and Support (SMS) subscription allows you to always work with the latest version of Amped Authenticate. And if you run into any issues using Amped Replay, an active SMS subscription will provide you with access to technical support.

Software upgrades and unlimited technical support via email is always included with the subscription license. For the perpetual license, it is included for one year from the date of purchase. You may purchase additional years of SMS at any time.

For the perpetual license, renewal of SMS is not mandatory, so the license purchased is still valid and can be used even without an active SMS plan. Continued software upgrades and technical support however require the purchase of an SMS subscription plan. The SMS can be recovered even after its expiration, compensating for the missing years. **The SMS can be recovered even after its expiration, compensating for the missing years.**

WHERE TO BUY

Amped Replay can be purchased directly from Amped Software or through one of our authorized worldwide distributors.

AMPED REPLAY TECHNICAL SPECIFICATIONS

GENERAL FEATURES

Feature	Description
	General Features
Recent Files	The Recent tab shows the latest files the user has worked on, either in compact or full view (which includes thumbnail, file size, extension, type, last project modification, last project view and file path). The tab shows also the current space available on the disk, the total cache files size, allows to delete the cache files for a single project or to open them in Windows Explorer.
Automatic Save	Every processing of a file is automatically saved in a cache, with no need for the user to manually do it.
File Browser	The import tab allows to browse and preview all files in a folder (optionally including the subfolders), search them by type, name or extension. It is also possible to bookmark specific folders for easy access. It is possible to choose between compact and full view (which includes file icon, name, extension, type, modification, loading, path). File can be also loaded by simply dropping them in the user interface from Windows Explorer.
Player and bookmarks	The Player controls are available in the Play, Enhance, Annotate, Export tabs and include: play, pause, seek forward and backward frame by frame, loop, add bookmark, delete bookmark, seek previous or next bookmark, add a description for an existing bookmark, zoom in and out, show the original size of the video or fit to the screen. Select a range of frames within the video and toggle to zoom in on the selection. Set the audio volume or mute it. Set the playback framerate or reset it to the original one. Select the Smooth Playback for a hardware-accelerated engine that offers smoother video playback for the most common video formats.

	The player displays: current frame number, total frame number, current frame time, total video time, zoom level (in red if different than 100%), proprietary video timestamp (when available).
File information	<p>Basic file information, when available, are displayed in the Play tab and copied in the generated report: file name, path, status (original or proxy file), proxy file path, file size, format, codec, FourCC, width, height, fps, audio stream, length in frames, duration in time, camera make, camera mode, EXIF Software, tag, JPEG Quality, Sampling Frequency.</p> <p>It is also possible to select the camera to view, if there are multiple video streams, and enable or disable audio.</p>
Case Information	Case information can be set by the user in the Play tab and copied in the generated report: case, location, camera, purpose of viewing, submitted by, review summary.
Enhance	Basic correction tools such as Correct Jagged Edges (Deinterlace), Correct Stretched Video (Line Doubling), Aspect Ratio, Rotate, Crop, Rotate, Light Adjustment (Automatic or Manual Contrast Brightness), Sharpen, Resize.
Annotate	Point and draw tools for adding shapes, arrows, text, images and freehand drawings to video and images. Highlighting a region in the video or image through spotlighting. Redaction in the form of pixelation and blurring is available alongside magnification of an area in the video or image. Choice of colors, borders, strength, transparency and size for all drawn shapes and redaction and level of zoom for magnification. Each annotation can track a specific object/subject. Tracking can be manual, software assisted, or keyframe based.
Export	The Export tab allows to export the current processed frame, the processed video, all the bookmarks, or the original video (possibly converted from a proprietary file and/or trimmed) with no or minimal loss of quality, in a standard playable format. It is possible to automatically open the generated files in the default system viewer after the generation.
Report	Allows for a generated report containing case file information as input by the user and video or image metadata. First and last frame of video or full frame of image are included, as well as any processed image results or bookmarks. It is possible to automatically generate the report with every export operation.

	Input and Output Formats
Input Image Formats	Supports any standard digital image format (i.e., jpeg, tiff, png, bmp, targa, ...).
Input Video Formats	Supports any standard video format (avi, mp4, mkv, flv, 3gpp, wmv, mov...), also without the need of the codec installed on the system.
Proprietary CCTV/DVR formats	Supports the decoding of most proprietary video formats from video surveillance systems (approximately more than 80% of the formats encountered). More than 300 formats and their variations are supported, and new formats are added upon request of the users after a feasibility study.
Export Video	Export the processed video into an MP4 file or export the original video as an AVI or MP4.
Audio Support	The user can optionally enable the support for audio, which includes playback of the audio stream in video. If the frame rate changes, the audio tempo slows down or speeds up accordingly.
Project Format	The project format is a simple and readable text-based file that lists the filters' parameters, the annotations and any operations applied by the user on a specific file. The project can be either imported into the program interface or exported as an .arp file. If the input file is missing or has been moved, it can be relocated while loading the project.
Export Images	Selected images and bookmarks can be exported from the current project. These are the possible output formats: JPG, BMP, PNG for images. JPG for bookmarks.
	System and Documentation
Compatibility	Runs on any standard PC, with Windows 7/8/10/11, 64 bits. Windows 10 or 11, 64 bits is suggested.
Updates	All software updates, both minor and major, are guaranteed when the SMS (software maintenance and support) is active. The SMS is always included with the subscription license. For the perpetual license, the first year of SMS is included with the initial purchase, additional years can be purchased together with the license or at a later time.





Supported Languages	Available in English, Italian, Spanish, German, Polish, Japanese. The language can be freely switched by the user with a simple restart. Additional languages can be added upon request.
Licensing	Standalone software provided as subscription or perpetual license, delivered electronically. Alternative licensing methods can be evaluated upon request. Once activated, the software can operate completely offline with no Internet or other network connection. The software installer is provided on the Amped Support Portal as a downloadable file.

HARDWARE REQUIREMENTS

	Minimum requirements	Suggested requirements
CPU	Intel Core i3	Intel Core i5 or faster
RAM	4 GB	8 GB or more
Hard drive space	1 GB free for program files	1 GB free for program files, 10 GB or more for casework files
Screen	13", 1024x768	13" or bigger, 1920x1080 (FHD) or bigger
Graphic card	No specific requirement	No specific requirement
OS	Windows 7 (32 or 64 bits) Windows 8 (32 or 64 bits) Windows 10 (32 or 64 bits) Windows 11 (32 or 64 bits)	Windows 10 or 11, 64 bits

THE AMPED ECOSYSTEM FOR FORENSIC IMAGE AND VIDEO ANALYSIS

Learn about the full line of solutions that have been developed to assist an entire organization with all investigations, starting from the field, up to the forensic lab, and then to the courtroom.

	<p>For investigators and frontline officers to conduct a first level analysis of their video evidence, with quick and easy conversion, correction, and annotation functions.</p>
	<p>For technicians tasked with converting a great number of surveillance videos in various proprietary formats, speeding up the triage in cases such as major investigations.</p>
	<p>For forensic lab experts to manage the complete image and video analysis workflow, with advanced and fully customizable processes for conversion, restoration, enhancement, measurement, presentation, and reporting, all in a single tool.</p>
	<p>For digital forensic experts to exploit the data behind digital images. Allowing analysis of image integrity, authenticity, metadata, source and history, and detection of tampering prior to its use as intelligence and evidence.</p>

ABOUT US

SETTING THE STANDARD FOR IMAGE AND VIDEO FORENSICS



OUR STORY

Amped Software was founded in Trieste, Italy, in 2008 by Martino Jerian. While working on his master thesis in Digital Image Processing at the University of Trieste, in collaboration with the Scientific Investigation Department of Carabinieri (Italian Military Police), Martino realized that video processing solutions for forensic applications were poor or non-existent, and not one single product could be found that met all the needs of a forensic analyst. Products offered at the time were a compromise of features or were incomplete and required other products to accomplish common tasks. This is why Martino decided to develop Amped FIVE, the company's flagship product.

Amped Software has thus been recognized as an innovator in the national and international arena. In 2008, barely a year from its founding, Amped Software was awarded as the best Italian start-up at the Tech Garage business competition, held during SMAU tradeshow. In 2010, Amped Software was presented in the book "Winning Italy: Almanac of Italian Excellence" by the Ministry of Foreign Affairs, which highlights significant innovation and achievements by Italian companies and individuals. Amped Software was also highlighted as a leader in scientific accomplishments in a world class group which featured prominent companies such as Ferrari, senior "Big Bang" CERN researcher Lucio Rossi, and Lorenzo Thione, the developer of the technology used by Microsoft in the Bing search engine.

OUR FOCUS

Amped Software is committed to help fight crime to keep communities safe, by offering innovative solutions to help convict criminals and protect the innocent.

We are setting the standard for image and video forensics. We focus on developing the most advanced and complete, yet simple and easy-to-use technologies for all image and video processing needs related to forensics, public security, and investigations. With an emphasis on the transparency of the methodologies used, our solutions empower our customers with the three main principles of the scientific method: accuracy, repeatability, and reproducibility. We also invest in research and in the development of best practices to make image and video forensics evolve faster.

Our customers are our number one priority. We continually listen to our customers and adapt and update our solutions in order to meet their evolving needs in digital image and video forensics.

OUR TEAM

Amped Software is made of a team of highly experienced digital forensic experts that use our own software to work on numerous real cases, in which many are of national and international importance. Some team members have also previously served in law enforcement and military. Because of our diverse experience we have a rare insight into how our tools work in practice and are able to emphasize any limitations or missing features for us to improve.

OUR CUSTOMERS

Important forensic labs, law enforcement, government, military, and security organizations worldwide use our solutions. Our products have been sold in close to 90 countries.

OUR PARTNERS

Amped Software has a large worldwide network of distributors. We also have several strategic and technological partnerships with some of the best companies in the law enforcement and video surveillance fields.

GLOBAL HEADQUARTERS

Amped SRL

Loc. Padriciano, 99

34149 Trieste, Italy

P: +39 040 3755333

F: +39 040 3755335

info@ampedsoftware.com

NORTH AMERICAN SALES

Amped Software USA Inc.

18 Bridge Street, Unit 2A

Brooklyn, NY 11201, USA

P: + 1 (718) 395-9736

info@ampedsoftware.com

