

Access Auditing:

An Immersive and Inclusive Introduction to Testing Site Accessibility



#ASLA2021

Friday, November 19, 2021
8:30 - 11:30 a.m. CDT

Justice, Equity, Diversity,
& Inclusion Track

2.00 PDH, LA CES/HSW,
AIA/HSW, AICP, FL, NY/HSW

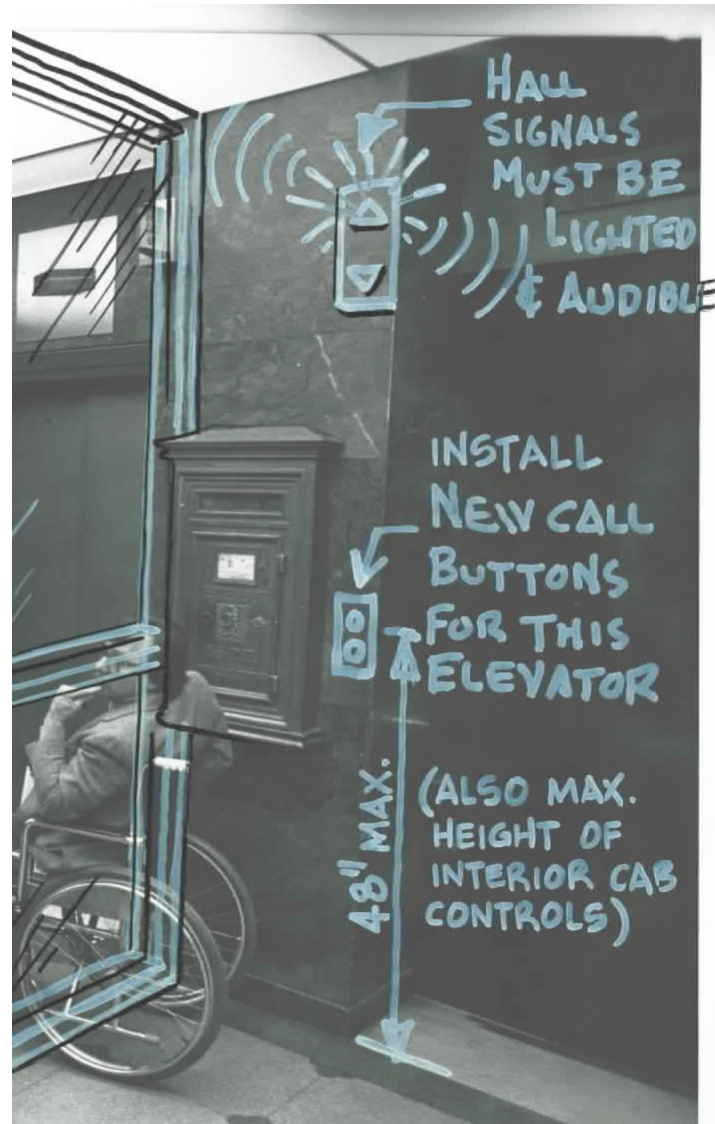
Music City Center
Field Session Departure Area 1

Overview:

Attendees will take a field trip to several local sites to conduct accessibility audits with local disabled community members. This field session will emphasize discrepancies between accessible and inaccessible design and participants will learn about access issues through first-hand experiences shared by disabled community members.

Learning Objectives:

- 1 Come to a better understanding of the effects of inaccessible designs for the disabled community and will leave understanding how to conduct a thorough access audit.
- 2 Come to a better understanding of the 2010 ADA Standards for Accessible Design, as it relates to landscape architecture, accessibility, and implications for improvements beyond the ADA.
- 3 Learn first-hand about accessible and inaccessible design elements with disabled community members and document an access audit through measurements, mapping, sketches, and photos.
- 4 Analyze the implications of design decisions and construction implementations in the field, by taking the opportunity to learn directly from disabled lived experiences over assumptions or disability simulations.



Access Audit Steps:

- 1** Arrive at each audit site prepared to observe, test, and document a broad range of accessibility issues and design decisions as related to physical, sensory, and neurocognitive disabilities.
- 2** Disabled community members will observe and test each site to determine accessible and inaccessible elements present (ADA, Universal Design, and Human-Centered Design elements).
- 3** Take measurements of site elements (with tape measure and level), document the audit on your map, sketch, take notes and snap photos. Disabled session leaders and contributors are available to answer your direct questions regarding their experience of each site.
- 4** Open discussion of the ADA Standards and Universal Design principles in consideration, unique to each site.

About Nashville Walk of Fame:

This 2 ½ acre park was originally completed in 2001 and is sited above a public parking garage in the heart of Downtown Nashville. It hosts Nashville Music Garden, a rose garden with music-themed rose hybrids, and the Music City Walk of Fame commemorating significant Nashville musicians and contributors. The park hosts many tourists and locals alike, with many special events.

In 2015, there was significant redevelopment undertaken by Collier Engineering, with several improvements including: cosmetic (for example, relocation and replacement of Walk of Fame plaques), concrete repair, regrading, new drainage, and lighting and electrical upgrades.

About Riverfront Park:

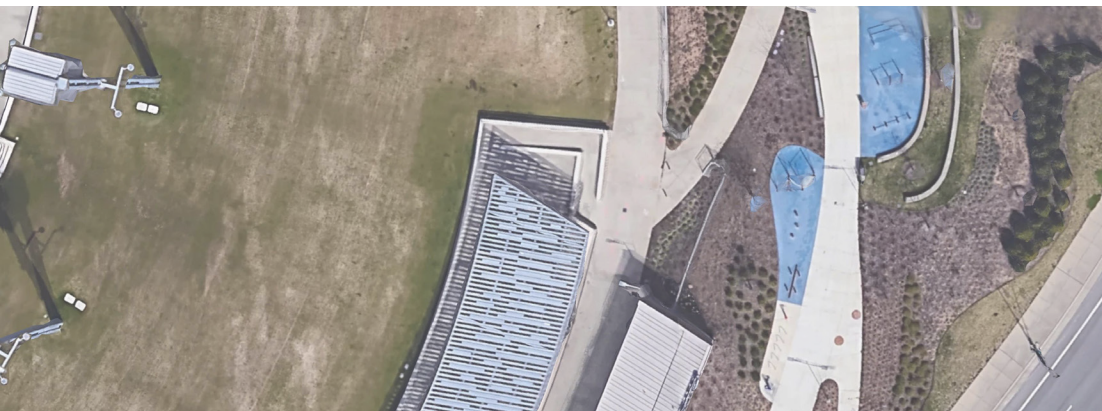
Riverfront Park, including the Ascend Amphitheater, was designed by Hawkins Partners and completed in 2015, based on a 2013 Master Plan. Including the section audited today, there is a total of 18 acres of riverfront parkscape, designed as open park space next to downtown.

The Amphitheater hosts 6500 people and there is a mile-long promenade. The design for Riverfront was inspired by the Cumberland River itself, with carved-out limestone bluffs, sand bars, and industrial history, which are reflected in sinuous curves, limestone walls, and earth toned materials.

Riverfront Park received two ASLA awards, including the ASLA TN Chapter Award of Excellence and Honor Award, as well as several awards from AIA.



- Curb ramps
- Formal ramps
- Stairs / steps
- Handrails
- Crosswalk striping
- Crosswalk signals
- Rights-of-way
- Detectable warnings and tactile cues
- Visual cues
- Signage and wayfinding
- Running slopes and cross slopes
- Entrances to buildings and thresholds
- Flooring surfaces and materials
- Elevators
- Push buttons
- Accessible restrooms
- Protruding objects
- Street furnishings
- Lighting
- Pathway widths
- Safety metrics
- Rest and comfort
- Public transportation and connectivity
- ADA parking spaces
- Sound / noise
- Sensory stimulation

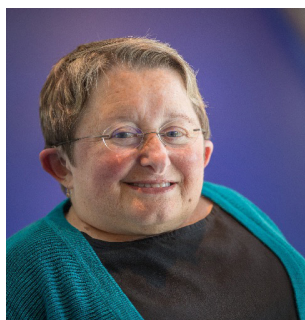


Session Leaders:



Alexa Vaughn-Brainard, Associate ASLA she/her
Landscape Designer & Access Specialist, MIG; 2020-2021 LAF Fellow

Alexa Vaughn-Brainard is a Deaf landscape designer and accessibility specialist at MIG, and a 2020 Landscape Architecture Foundation Olmsted Fellow. Her research began with a focus on designing for the Deaf community and she continues to research methods to include the broader disabled community as stakeholders and experts; recently she released a toolkit of resources (DesignWithDisabledPeopleNow.com) for the creation of a more inclusive design process and accessible public realm. Her original work, "DeafScape: Applying DeafSpace to Landscape," published in *Ground Up Journal*, has been widely featured and she is an active writer and guest lecturer in academia and professional practice.



Karen L. Braitmayer, FAIA she/her
Principal, Studio Pacifica, Ltd.

Karen Braitmayer is the founder and managing principal of Studio Pacifica, an accessibility consulting firm in Seattle. She and her team provide consulting services to local governments, architects, engineers, companies and individuals concerned with complying with Federal laws and State codes, as well as creating spaces that work for the unique needs of individual users. Karen also leads presentations and workshops nationally to further educate professionals about codes, standards, and inclusion. She received the AIA's 2019 Whitney M. Young Jr. award in recognition of her leadership in civil rights for people with disabilities, public policy and universal design.



Aimi Hamraie, PhD. they/them
Associate Professor of Medicine, Health, & Society, Vanderbilt University

Aimi Hamraie is an accessibility researcher and designer. They are associate professor of Medicine, Health, & Society at Vanderbilt University, where they direct the Critical Design Lab. Their projects include community-based accessibility mapping and campus accessibility master planning. They are author of the book *Building Access: Universal Design and the Politics of Disability* (University of Minnesota Press, 2017) and a forthcoming book on livable cities.



Emily O'Mahoney, FASLA, LEED AP she/her
Partner, 2GHO, Inc.

Emily M. O'Mahoney, Partner, 2GHO, has been a registered landscape architect in private practice since 1980. She designs award-winning projects from parks to mixed-use new urbanism development with emphasis on the details that make a space successful and sustainable. As past Trustee, President, Education and the Government Affairs Committee Chair for Florida, Emily has been responsible for development of educational courses and prepping candidates for the LARE. Since 2009 she co-authored and taught accessibility courses and sensitivity field sessions for Florida based on the Florida Building Code and an ADA course for landscape architects nationally.



David F. Milligan, FASLA, LEED AP, IFMA FMP he/him
IntersectDFM

David F. Milligan, having 35-years professional experience covering the planning, design, development, renovation, management and operations of public facilities, has addressed implementation of ADA accessibility standards from multiple perspectives. He specializes in the assessment of physical barriers and their removal in outdoor facilities. His direct involvement in facilities design, operations and maintenance has provided a unique opportunity to assess, implement and manage compliance with ADA standards at all levels. Since 2009 he has co-authored and taught classroom courses and field sensitivity tours on ADA accessibility standards specifically aimed at landscape architects and the outdoor environment.

Resources:



American Society of Landscape Architects. *Principles of Accessibility for Landscape Architecture: ADA, ABA, and Other Accessibility Standards and Guidelines*. Landscape Architecture Technical Information Series (LATIS), 2021.

www.asla.org/ContentDetail.aspx?id=55503

American Society of Landscape Architects. *Universal Design Guide – Resource Guide*, 2019. www.asla.org/universaldesign.aspx

2010 ADA Standards for Accessible Design. Dept. of Justice, 2010.

Center for Universal Design, The. "The Principles of Universal Design." North Carolina State University, 1997.

Hamraie, Aimi. *Building Access: Universal Design and the Politics of Disability*. University of Minnesota Press, 2017.

Hamraie, Aimi. *Critical Design Lab*, www.mapping-access.com/.

O'Herlihy, Eoin. "Guidelines for Access Auditing of the Built Environment." National Disability Authority, 2014, nda.ie/Publications/Environment-Housing/Environment-Publications/Guidelines-for-Access-Auditing-of-the-Built-Environment.html.

Vaughn-Brainard, Alexa. *Design with Disabled People Now*, www.designwithdisabledpeoplenow.com/.

Vaughn-Brainard, Alexa. "The Insensitivity of Sensitivity Studies." *Ground Up Journal*, Issue 10, 2021.

IntersectDFM



studiopacifica



VANDERBILT
UNIVERSITY