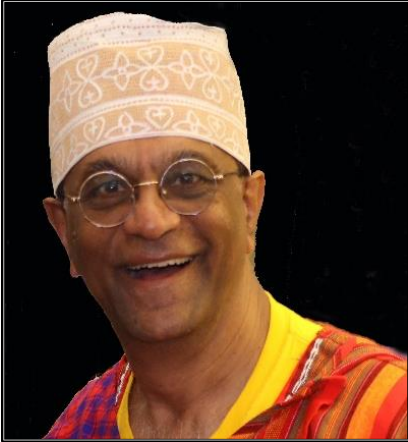


## SAT-A09: Africa 3.0!

### Panelists:



**Hitesh Mehta** FASLA FRIBA FAAK Associate AIA



Hitesh Mehta, a dual Kenyan/USA citizen, will both moderate and speak at this panel. He is the President at HM Design, a holistic practice that started in Nairobi, Kenya in 1990. Mr. Mehta has 33 years of work experience, consulted in 66 countries (spanning six continents) in the world and is a multi-International award-winning designer with Awards in Landscape Architecture, Planning, Architecture, Urban Design, Creative Writing and Publishing, and Interior Design. He was one of three panel speakers at the General Assembly session at ASLA San Diego 2019.



**Anthony Wain** Pr LArch BSc(Hons) HORT MA(LArch) MILASA



**PLANNING PARTNERS**

Anthony Wain is a Professional Landscape Architect and Horticultural Scientist trained in the U.K. and has 33 years' experience in 19 countries worldwide. Anthony is a Senior Landscape Consultant to the Aga Khan Trust for Culture, was the first Mellon Resident Practitioner in 2015 at Dumbarton Oaks and continues his studies at the University of Cape Town. His work encompasses World Heritage Sites, city parks, mixed development projects and conservation. He has published and presented many anecdotal papers on his projects and spoken widely at conferences, or to any willing listener on aeroplanes!



**Ambrose Ofafa** - Landscape Architects Chapter, AAK, Kenya



Ambrose Ofafa is a black Kenyan landscape architect and is the ex-Chair of the Landscape Architects Chapter of The Architectural Association of Kenya. Ambrose has lectured Landscape Architecture at The Technical University of Kenya under the department of Architecture and the Built Environment and is the Founder and Director of Ecoarch Solutions Limited, a landscape architectural company based in Nairobi, Kenya that started practice in 2012. Before starting his own firm with his wife, he practiced landscape architecture in Rwanda, Democratic Republic of Congo and Burundi.



## SESSION MARKETING STATEMENT:

The economies of many African countries have been heavily affected by COVID and the Landscape Architecture profession, both from a professional and educational perspective is facing many challenges such as climate emergency. This session highlights success stories in both rural/urban areas and presents achievements and opportunities in Landscape Education institutions.

## PANEL DIVERSITY:

This panel includes multiple voices and varying points of view from several important fast-growing regions of Africa. The presenters are from diverse backgrounds and will bring to the panel, expertise, work experience and knowledge in the fields of urban planning and design, rural-based climate emergency planning, and African Landscape Architecture programs.

### Examples:

- The panel reflects a diverse collection of expertise, experience, and background: Asian-African, Black African, Caucasian African respectively;
- In order to illustrate the full scope of the projects featured in this session, the panel is comprised of three professionals who have backgrounds and experience in: landscape architecture, horticultural science, urban planning, urban design, architecture and academia.
- This panel provides discipline diversity, engaging professionals from the fields of protected area planning, ecotourism, socially inclusive design, urban public realm and academia.

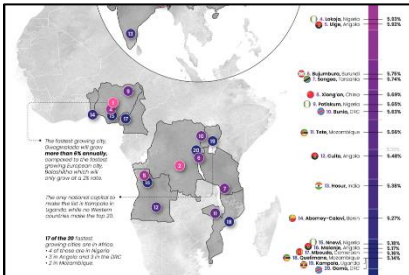


## LEARNING OBJECTIVES:

1. Examine the sensitivity, diversity and complexity required in testing physical and urban African environments.
2. Learn how Landscape Architects are using innovative sustainable planning techniques to address Resilience, Climate Emergency and COVID design.
3. Gain insight on how participatory planning methods are helping create social justice
4. Understand the challenges and successes of African Landscape Architecture Educational programs, and learn about studying and teaching opportunities in these schools.



## Introduction:



## A CONTINENT-WIDE OVERVIEW: CONTEXT, OBJECTIVES, CHALLENGES AND OPPORTUNITIES

Hitesh Mehta [hm@h-m-design.com](mailto:hm@h-m-design.com)

- A. Introduction about African Development growth and emerging economies.

### Six Fastest Growing Economies In Africa – 2021:

South Sudan	4.11%
Egypt	3.55%
Benin	2.00%
Rwanda	1.99%
Ethiopia	1.95%
Tanzania	1.90%

- B. The statistics and challenges of African rural -urban migration
- C. Covid Cases in Africa
- D. From urban to rural context: an overview of the status of the profession continent-wide

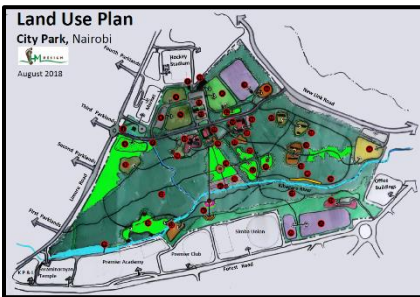
## NOTES:



**Case Study 1:**



**Case Study 2:**



**Case Study 3:**



**Case Study 4:**



- E. Through Case Studies, demonstrate how Landscape Architects are addressing Climate Emergency, COVID Design and Resilience in Urban and Rural areas.
- F. Introduction to implementable solutions at the regional and site scale
  - 1. Understanding issues of biodiversity conservation and social development in and around protected areas
  - 2. Strategies required for landscapes affected by overpopulation and war.
- G. The importance of local consultants
  - 1. Easy access to site, lower costs, local knowledge
  - 2. Construction Documents and local understanding of materials and construction skills.

**NOTES:**

## **“WINDS OF CHANGE”: OLD LANDSCAPE LEGACIES AND NEW METHODS IN A RAPIDLY URBANIZING AFRICA**

**Anthony Wain** [Anthony@planpart.co.za](mailto:Anthony@planpart.co.za)

---

### Introduction

Landscape Architects, as teachers, are expected to teach both, professional concepts and reality with the same certainty and enthusiasm!

It would be exciting at an early age for students of landscape design to acquire the sense and sensibilities of older practitioners in order to gain confidence and a sense of perspective in space and time.

### In Space ...

Two dimensional representations, drawings were the natural go-to medium, but now there are other options in the cyber world of AutoCAD, virtual reality, and augmented reality.

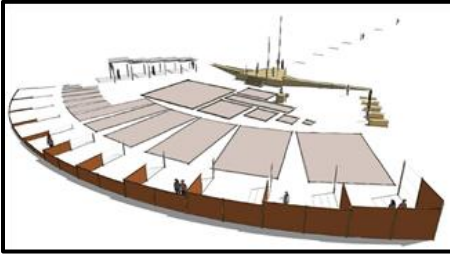
But we all begin by learning to use our bodies and this perception changes as we grow and can continue to grow intellectually. In this way we learn to design spaces not just fit for human beings, but a good fit for human beings!

### In time ...

The purpose and function of landscape architecture in design and management may change, as populations in their recreation, science, fashion, and politics also change. Sometimes in major social upheavals, such as colonization and decolonization.

There is much to think and talk about...

## Case Study 1 :

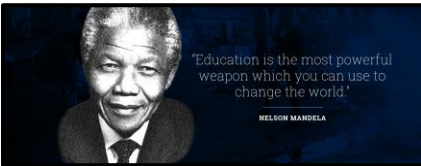


## Practical Innovation in Landscape, Scale & Perception:

### Great Spatial Teaching Engine

- A. What is the potential depth and direction of real-time, hands-on education in the design of landscape spaces referencing valid human proportions, capabilities, and comfort?
- B. Testing the emotional scale of spatial appreciation for different activities and design intentions.
- C. Physically teaching a student to feel the scale and power of the proportions of landscape and to recall it in responding to design challenges.
- D. To counter the sometimes-false confidence of AutoCAD and reinforce it with a humanistic comfort scale. Size and proportion can change the human perception, well designed space for the better.

## Case Study 2 :



## Reimagining Post-Colonial Heritage Landscapes

### Proposed Nelson Mandela Memorial Centre & University of Cape Town

#### School of Public Governance

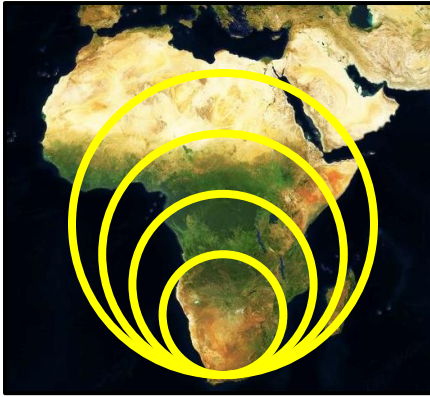
- Which landscapes may be classified as “colonial landscapes”?
- Can they be decolonialized and reformed or reimagined?
- When is the right time to rewrite history?
- The palimpsest? Is history rewritable in the landscape?  
The narration of a nation approach.
- History tends to accrete and linger in the landscape telling its own story which may not be the whole truth, but a lost horizon.

#### NOTES:

## AFRICAN LANDSCAPE ARCHITECTURE EDUCATION

Ambrose Ofafa <[aofafao@gmail.com](mailto:aofafao@gmail.com)>

---



- A. Overview of Landscape Architectural Education in Africa.
- B. Continental Landscape Architecture Education demographics
- C. Outline of the main features of the African Landscape Convention – what it is and where we are at
- D. Understanding the situation in many African countries as far as recognition of landscape architecture is concerned, and the difficulties in practicing on the African continent
- E. Introduce the African Landscape Network project which aims to create an interactive database of cultural landscapes on the continent, linking people, places and experience
- F. Introduce the African Landscape Journal (AJLA)
- G. Challenges, opportunities and preferred solutions

### NOTES:



#### SOURCES:

- <http://www.h-m-design.com>
- <http://www.planpart.co.za>
- <https://www.iflaworld.com/membership/iflaarfrica>
- <https://www.facebook.com/IFLA.Africa/>

General Assembly Presentation at ASLA San Diego 2019:

<https://vimeo.com/384015816#t=2845s>

Presentations in Vancouver and Alice Springs, Australia:

<https://www.youtube.com/watch?v=BC60bN-doLI&index=22&list=UUzhiPHbNNbFtmet3hO-wlSw>

Keynote presentations at FLASLA and LABASH:

<https://www.youtube.com/watch?v=yFdUZSpEU98&list=UUzhiPHbNNbFtmet3hO-wlSw&index=23>