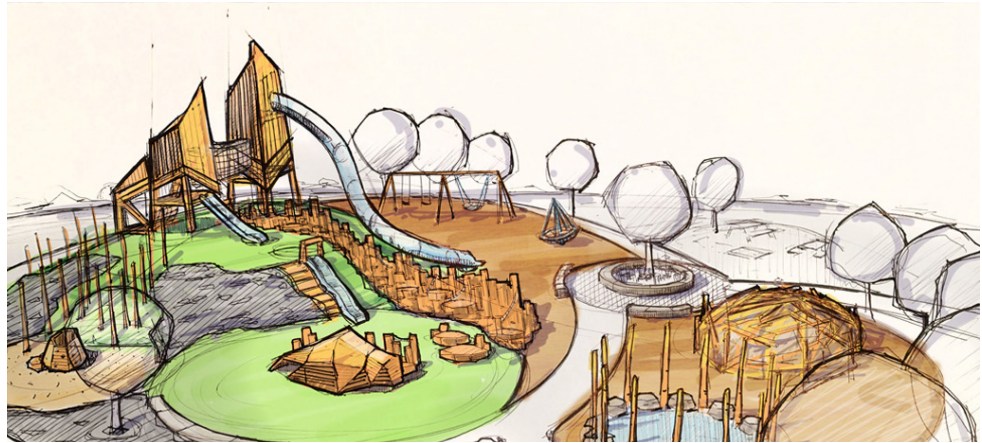




American Society of
Landscape Architects



STORYTELLING THROUGH DESIGN:
HONORING DIVERSE VOICES

SPEAKER INFO



Nathan Schleicher **Earthscape Play**

Nathan is an industrial designer and playground enthusiast. His portfolio ranges from parkour-friendly mini-cities at the Consumer Electronics Show in Las Vegas to indoor STEM playgrounds in Detroit. Prior to joining Earthscape, he was the founder of Brainchild Design Co., specializing in modern wood-crafted children's environments. At Earthscape, he is the lead playground concept designer and is responsible for Research & Innovation. His handsketches are often the starting point of the iterative design process and his playable architecture now lives in cities across North America, from Presidio National Park in San Francisco to St Pete Pier in Florida.



Karen Hunter, MBA, PMP **Colliers Project Leaders**

Karen has over 17 years' experience in commercial / industrial project and construction management. She has planned, monitored, executed, and completed projects ranging up to \$40 million for clients across Saskatchewan. As an owners' advocate, Karen is a leader in stakeholder engagement with Indigenous, non-profit, private and public sector clients, adept at scope development, budget and schedule management and is a leader in overall project and program coordination.



Kenneth Kokroko, ASLA, PLA **University of Arizona**

Kenneth is a landscape architect with unique experience leading community-based planning and design processes for park, open space, and neighborhood projects. His research background in anthropology, environmental science and community development brings a fresh, holistic perspective to his design approach. Through his work in community-based projects, Kenneth became passionate about meaningfully connecting people with the built environment to improve social and ecological outcomes. His multidisciplinary training and experience collaborating with community partners from diverse backgrounds have also informed his approach to implementing equitable and inclusive engagement, planning and design strategies for public open space development.

LEARNING OBJECTIVES

1

Discover how stories and storytelling can act as the driving creative force behind powerful community-first designs that reflect the communities in which they are located.

2

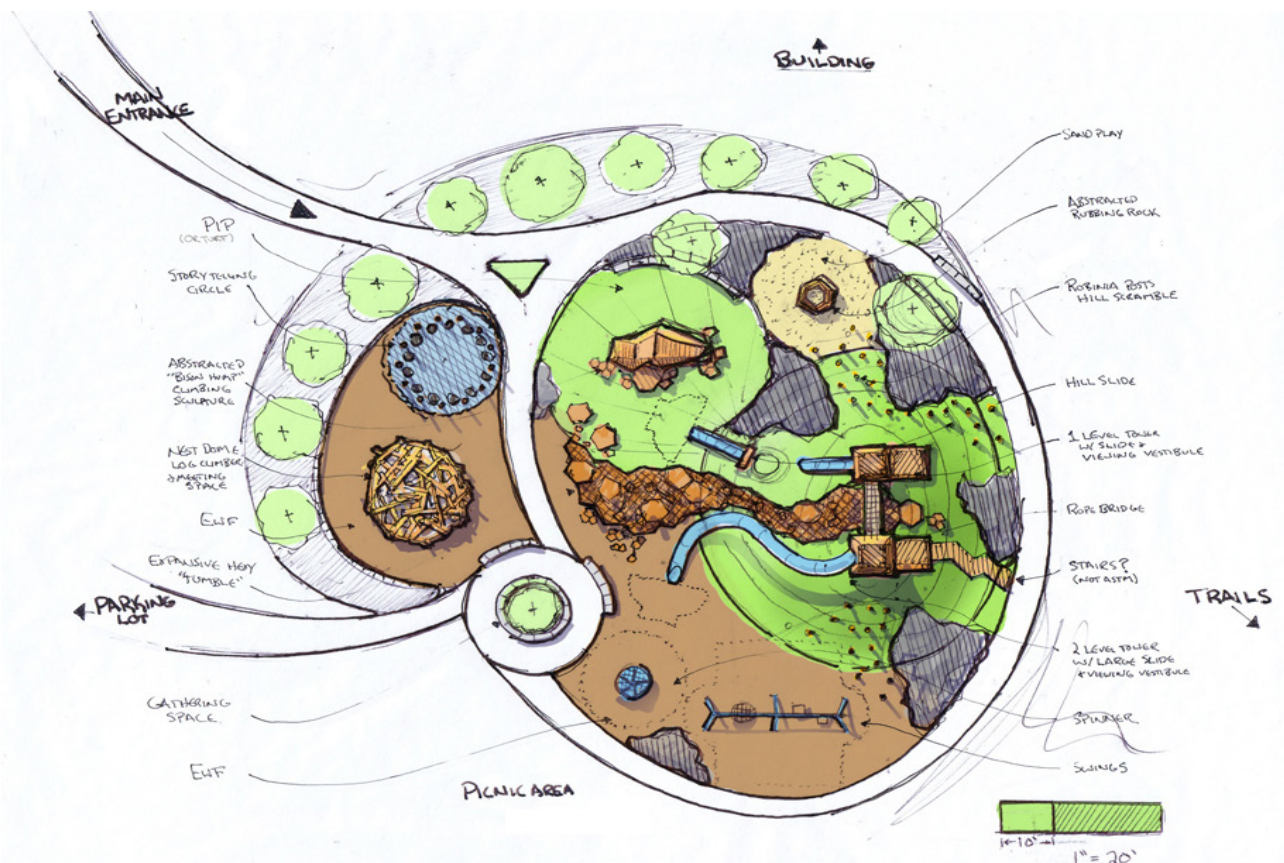
Explore the complexities of addressing issues of representation, cultural sensitivity, and appropriation in partnership with indigenous communities.

3

Highlight how storytelling informs thoughtful planning and design of recreational and play spaces and can act as a catalyst for reconciliation, healing of urban trauma, community dialogue and co-authorship.

4

Understand how innovative approaches to public engagement and integration of a variety of perspectives and histories can contribute to the creation of truly unique spaces that appropriately serve communities.



CASE STUDIES



Wanuskewin Heritage Park - Saskatoon, SK

- Wanuskewin Heritage Park sits above the Opimihaw Creek and the South Saskatchewan River near Saskatoon – a window into a part of Canada's history that remains largely undiscovered, and a link to the past unlike any other National Historic Site in Canada.
- Wanuskewin's uniqueness is not just the fact that there exists evidence of ancient peoples, but rather the composition of many different aspects of habitation, hunting and gathering, and spirituality – all in one place.
- Longest active archaeological site in Canada running more than 40 years and proving 6400+ years of habitation.
- Wanuskewin operates as a non-profit, non-government funded independent organization.
- With a nomadic history, knowledge has been passed on through storytelling which remains an integral part of the culture/language.



Joe Louis Greenway - Detroit, MI

- 27.5 mile Joe Louis Greenway is a planned biking and walking trail that extends from the Detroit Riverfront to Highland Park, Dearborn, and Hamtrack.
- When completed, it will provide a place for people of all abilities to safely walk, bike and run while connecting neighborhoods, parks, schools, jobs, historic sites, commercial corridors and public transit.
- Community input was an important part of the framework planning process. The greenway must reflect the needs and desires of the local communities through which it passes.
- This project is much more than just a trail. It's an opportunity to bring additional investment and attention to the neighborhoods through which it passes.

RESOURCES

1

Adams, Alicia, and Lori Singleton. "Leveraging Community Voices for an Inclusive Future." The Field, 16 July 2020, <http://thefield.asla.org/2020/07/16/leveraging-community-voices-for-an-inclusive-future/>

2

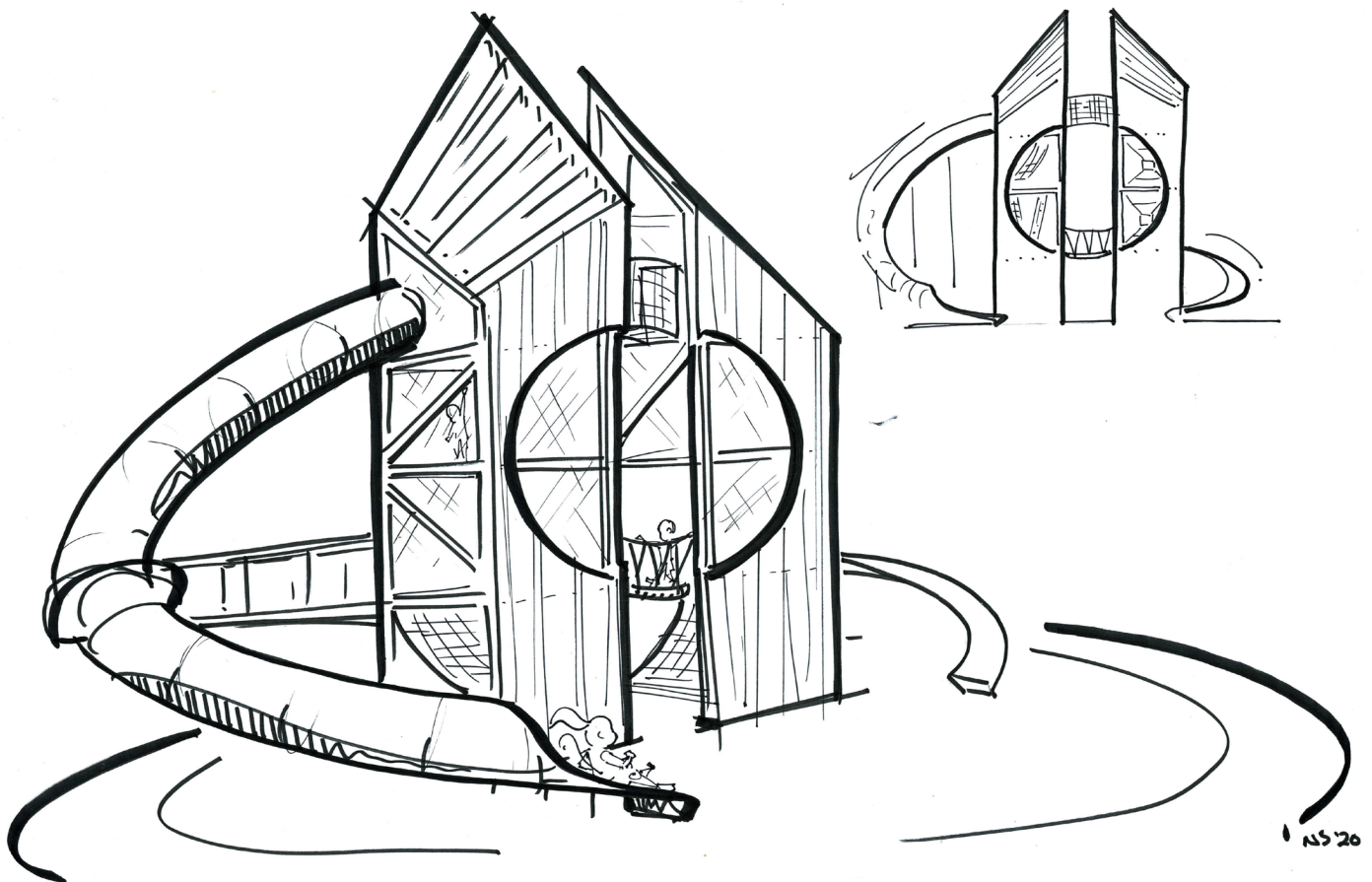
Gill, Tim. (2021). URBAN playground: How Child-Friendly Planning and Design Can Save Cities. 10.4324/9781003108658.

3

Joe Louis Greenway, Detroit, Michigan <https://detroitmi.gov/departments/general-services-department/joe-louis-greenway>

4

Wanuskewin Heritage Park, Saskatoon, Saskatchewan <https://wanuskewin.com/our-story/>



NOTES

