

ROOTED IN PROCESS

LANDSCAPE ARCHITECTURE AS COLLECTIVE SOCIAL PRACTICE

SUNDAY, NOVEMBER 21, 2021 | 2-3PM
MUSIC CITY CENTER, ROOM 105

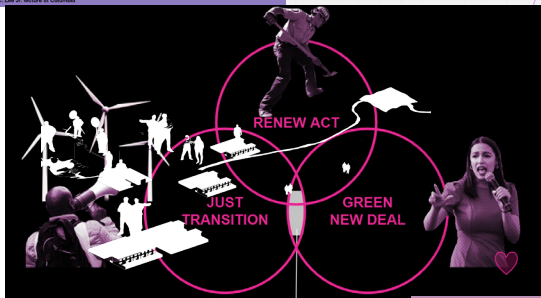


We are ditching the #landscapearchitect savior complex, instead focusing on how we can catalyze life, beauty, and equity in this uncertain, increasingly inhospitable, and challenging world.

transition parameters communicate intersectional-ecological understanding of local systems & issues, community desires & needs, inform recommendations

"POWER HAS ALWAYS BEEN ROOTED IN LAND"

NOTES from Brian C. Lee Jr. lecture at Columbia



SITE SCALE INITIATIVES

1

Nationwide parking lot refurbishment program - deploy landscape architects to redesign parking lots to include green infrastructure, trees, walkable elements, electric car charging stations, renewable energy generation, etc. Collaboration between national and state DOTs, business owners, and FBLA

National Parks Design Cooperative - send LAs into small communities to assist local parks + recreation departments with park design, implementation, and maintenance strategies, working primarily with departments that cannot afford to hire an outside consultant

Native Planting/ Invasive Removal, Landscape management guidebooks, Healthy soils / Compost

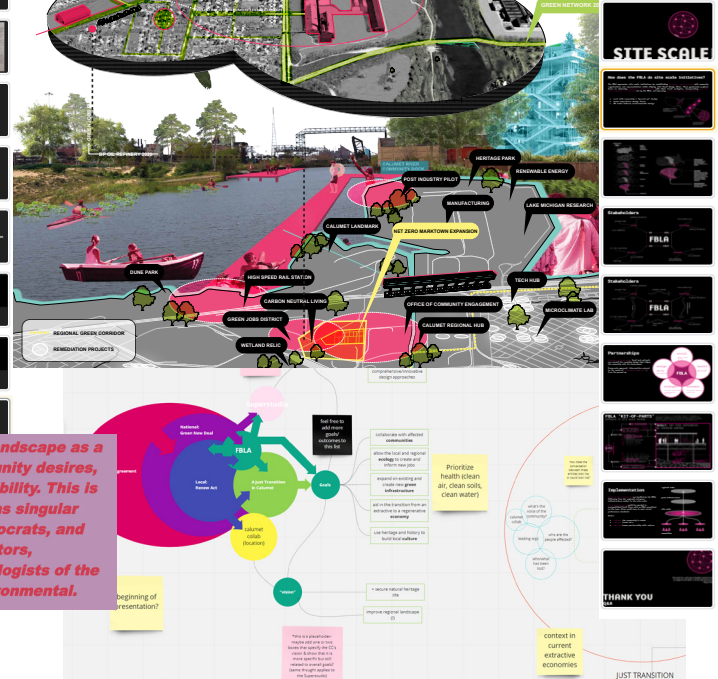
Deep organizing projects landscape as a practice to mediate community desires, and environmental compatibility. This is landscape architects less as singular master-designers, or technocrats, and more as mediators, translators, anthropocene systems ecologists of the social, economic, and environmental.

GREEN INFRASTRUCTURE AT SCALE

2

Restoring Prairie Ecology on fracking land. Repurposed irrigation from network of pipes and water distribution

National Coastal Resilience Initiative (National Shoreline Initiative) redesign of all public shorelines across the country to implement best practices for sea level rise and coastal adaptation - living shorelines, wetland conservation, bulkhead removal, restoration, etc. "Big A" coordinating among USACE, EPA, FEMA, NOAA, etc.

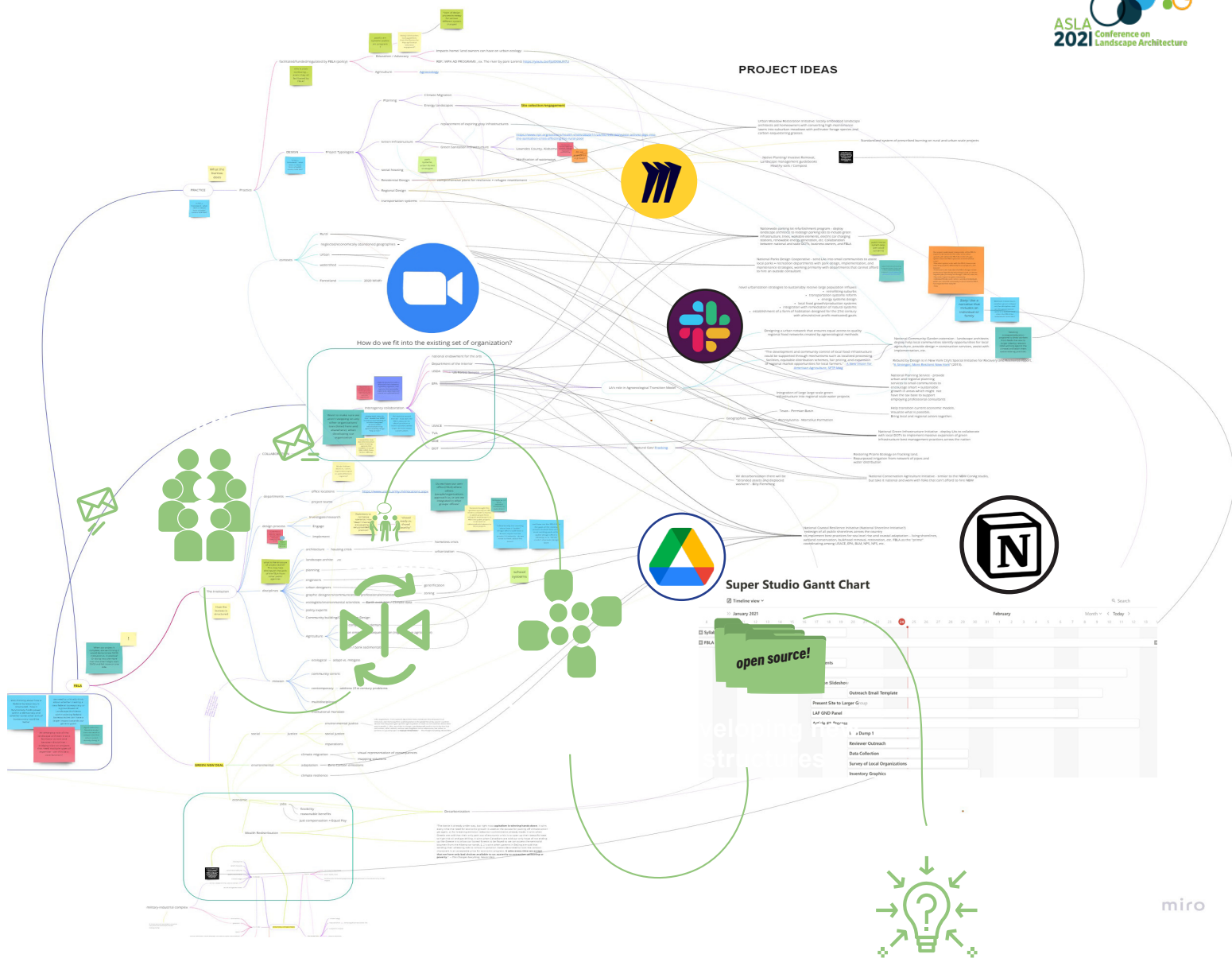


From the lens of a Green New Deal Superstudio team of emerging professionals, this session focuses on celebrating process through a community-driven framework. *Rooted in Process* presents how the methodologies developed through this Superstudio and a startup company can serve as a model for collective design.

In the spirit of social practice, participants are invited to engage in these topics within break-out teams.

How can we evolve the methods of our practice to meet landscape infrastructure projects of the future?

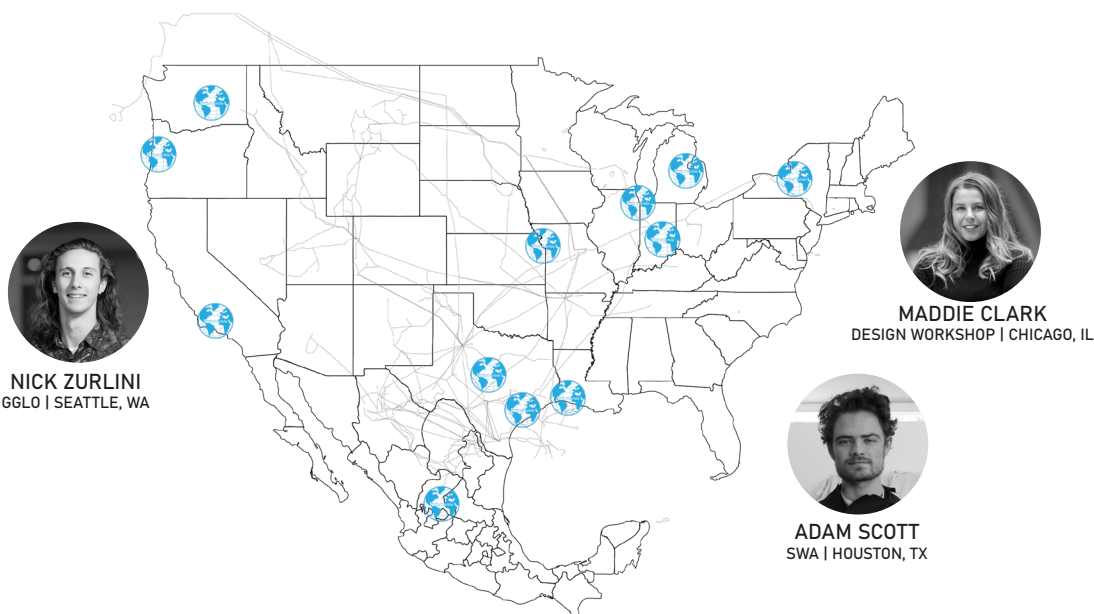




LEARNING OBJECTIVES

- + Understand the perspective and credibility of youth as a force ready and committed to addressing the multiple pandemics of our time, including climate change, racial injustice, and market-generated crises.
- + Envision the future of landscape architecture practice as intersectional. Understand the relation and importance of embracing the Green New Deal, economics, and multidisciplinary collaboration within design.
- + Understand the principles of *Design Justice* and *Design Advocacy* as decision-making frameworks. Landscape architects can “design the process” to best combat the climate crisis.

Blue Marble is a collaborative group of purposeful and driven young designers aiming to apply their tools towards a livable, sustainable, even beautiful future. The ever evolving team represents a variety of landscapes across the nation.



NICK ZURLINI
GGLO | SEATTLE, WA

MADDIE CLARK
DESIGN WORKSHOP | CHICAGO, IL

ADAM SCOTT
SWA | HOUSTON, TX

ADRIANA HERNÁNDEZ AGUIRRE
ASSOCIATE ASLA | LANDSCAPE DESIGNER
COLEMAN & ASSOCIATES | AUSTIN, TEXAS

OLIVIA PINNER
ASSOCIATE ASLA | LANDSCAPE DESIGNER
SWA | HOUSTON, TEXAS

ADAM DEHEER
ASLA | CEO
LEAPFROG DESIGN | BEND, OREGON

Adriana Hernández Aguirre is a landscape designer at Coleman & Associates in Austin, TX. She grew up in Mexico, but moved to the U.S.A. to pursue a bachelor's degree in landscape architecture at Texas A&M University. As a Student Chapter President in 2018, a 2019 National Olmsted Scholar Finalist, and 2021 National ASLA Board of Trustee, Adriana has developed a passion for landscape architecture, advocacy, and climate action. As an emerging professional, Adriana joined a group of Olmsted Scholars participating in the Green New Deal Superstudio to envision and promote the intersection of policy, design, and activism.

Olivia is a landscape designer at SWA in Houston, Texas. She graduated from SUNY-ESF magna cum laude as an Olmsted Scholar. Her interests in art, activism, and design have informed her advocacy ethic in landscape architecture practice. At SWA, she is actively involved in *Futuretense*, a research project in collaboration with her colleague, Adam Scott, where they are studying the future of oil landscapes. Olivia hopes to be an influence in expanding the scope of the profession to include more policy, economics, and art, as she believes in the power of design for building a more just and equitable future.

Adam holds a B.A. with honors in Environmental Philosophy and a Master's in Landscape Architecture from the University of Oregon. In 2019 he was named National Olmsted Scholar by the LAF and was presented with the National Award of Excellence in Residential Design by the ASLA. Adam's master's thesis included the development and use of a codesign framework that, like human-centered design, engages end-users in the design process. This collaborative design method continues to be refined with ongoing use as Adam leads his new design agency LeapFrog Design, with their focus on community design, green infrastructure, and onsite water reuse.



[NOTES]

