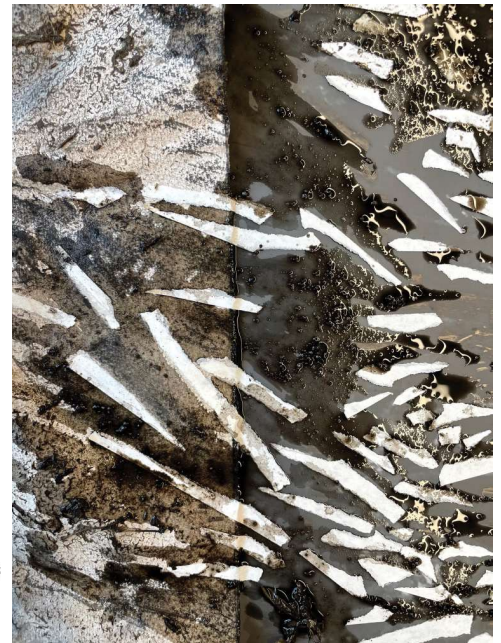
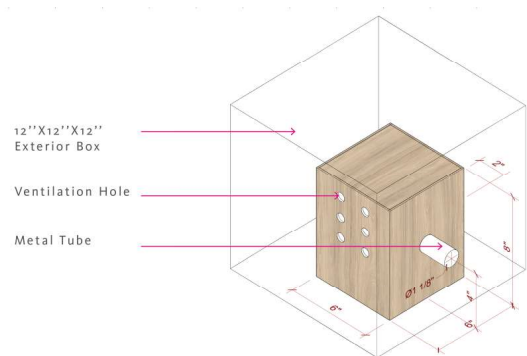
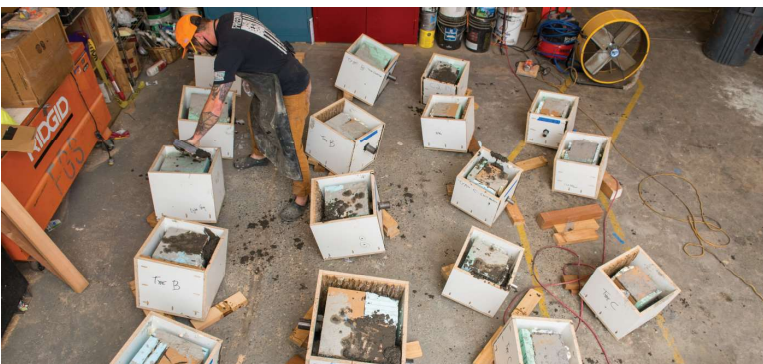




Soil-less Soil Materials Research, Sahar Coston Hard (left) and Rebecca Popowsky (right) (OLIN)



Site Documentation, Cedar Lake and Lake of the Isles Master Plan, (TEN x TEN)



Birdhouse Schematic & Mock-ups, Invisible Ecologies (FUTURE GREEN STUDIO)

## SAT – A01

### Critical Curiosity: Design Processes that Challenge Norms

Saturday, November 20th, 11:00-12:15pm

# SAT – A01

## Critical Curiosity: Design Processes that Challenge Norms

Saturday, November 20th, 11:00-12:15pm

### SESSION OVERVIEW

Three practice leaders will share how design research, curious methods and provocative questioning provide a critical foundation for their work. These stories will explore how different scales of practice are challenging the normative environment of professional practice through process-oriented ways of working, engaging, and thinking.

This panel will discuss the creative process as an approach that requires unlearning, defying and challenging the typical structures and modes of contemporary practice. Embracing creative methods as a way of working not only catalyzes design innovation but can be used as a productive tool for civic participation, stakeholder engagement, and collaboration across disciplines. This panel will open a conversation about how these three firms and practice models are trying to establish new platforms for design inquiry that challenge the field to break free of the constraints of normative practice to better address the issues of our time.

The panel will also discuss HOW these three practices are supporting this work by being transparent about the financial commitment, resources and structure required.

### LEARNING OBJECTIVES

1. Explore the fundamental duality within the field at the intersection of art and science.
2. Understand how various analog, digital, analytical tools, and other curious methods catalyze innovation and grow sets of knowledge around design process, critical research, engagement, and post occupancy evaluation.
3. Explore case studies of active projects through a sharply focused exploration of process, experimentation, and research.
4. Understand the successes, challenges, and needs of the professional relationships and practice models that are fighting to do this work.

### RELEVANT READINGS

1. Karen Lutsky and Sean Burkholder, "Curious Methods" in Places (<https://placesjournal.org/article/curious-methods/>)
2. Kyna Leski, *The Storm of Creativity* (Cambridge: MIT Press, 2015)
3. Gregory Bateson, *Mind and Nature: A Necessary Unity*, 6th ed., (New York: Bantam, 1988)
4. James Corner, "Ecology and Landscape as Agents of Creativity," in Eds. George Thompson and Frederick Steiner, *Ecological Design and Planning* (New York: Wiley and Sons, 1997)
5. Anuradha Mathur & Dilip da Cunha, *Soak: Mumbai in an Estuary* (Kolkata: Rupa & Co, 2009)
6. Donald A. Schon, *The Reflective Practitioner: How Professionals Think in Action* (1983)



## SAT – A01

### Critical Curiosity: Design Processes that Challenge Norms

Saturday, November 20th, 11:00-12:15pm

#### **SPEAKERS**

##### **Rebecca Popowsky, Research Associate OLIN**



Rebecca Popowsky is a landscape architect and a teacher. She leads external research for OLIN Labs, including work with academic and scientific institutions and allied professionals. Since joining OLIN in 2009, Rebecca has contributed to a wide-range of design, planning, and construction projects. Her portfolio includes Canal Park in Washington, DC, Dilworth Park in Philadelphia, and the Potomac Park Levee on the National Mall. Rebecca teaches both core and advanced design studios at the University of Pennsylvania where she earned master's degrees in Architecture and Landscape Architecture. She is a PhD candidate in Practice-based Research at Virginia Tech.

##### **Maura Rockcastle, Principal & Co-Founder TEN x TEN**



Maura has extensive experience working on large scale public projects, managing and navigating multi-headed stakeholder groups and complex public processes. With a background in printmaking and sculpture, Maura balances a rigorous approach to leadership, project management and design quality with a conceptual sensibility rooted in process. Her professional experience is focused on cultural, institutional, and public realm projects that spans many scales of landscape - from 4,500-acre parks, to 5-acre urban plazas, to small collaborative art installations. Maura holds a BFA in sculpture and printmaking from Cornell University and an MLA from the University of Pennsylvania.

##### **David Seiter, Principal & Design Director Future Green Studio**



David Seiter is design director and founding principal of Future Green - a studio focused on design, fabrication, and research in Brooklyn, NY. Winner of the prestigious Emerging Voices Award from the Architectural League of NY, David's portfolio encompasses high-profile private and public-use projects - including commissions from the Metropolitan Museum of Art, Rockefeller Center, and the Brooklyn Children's Museum. He is author of *Spontaneous Urban Plants: Weeds in NYC* - a book about the overlooked ecological value of weeds. David lectures widely about emergent trends in landscape architecture and recently taught at the University of Pennsylvania and Pratt Institute.

# **SAT – A01**

## **Critical Curiosity: Design Processes that Challenge Norms**

Saturday, November 20th, 11:00-12:15pm

### **NOTES**