



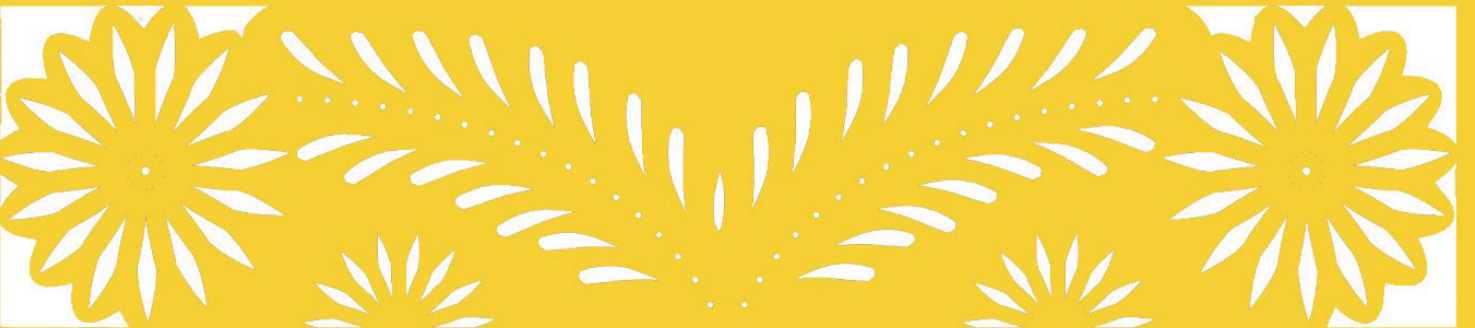
# LATINAS IN LEADERSHIP

Sunday November 21, 2021

9:00 AM – 10:00 AM

SUN-A07

Dive into three distinct Latina-Lead firms and candidly explore firm origin stories, set-backs, big breaks, and the personal moments of opposition and triumph that lead to founding and running a design-forward, empathetic, and mission-based firms. These practices range from small to large, showcasing the leadership that exists in the Latinx community.



# Moderator



Patricia Akinaga, PHD, APA  
Studio-MLA

Patricia Akinaga is a Brazilian-born landscape architect, architect, urban planner, and practice leader. For 25 years she has used her creative and analytical talents for urban parks projects, river revitalizations, reclaimed landscapes, cultural institutions, mixed-use developments, transportation plans, and campuses throughout the U.S., South America, and Africa. Her global background shapes her design approach and informs her advocacy for sustainable interactions between cities and nature. Patricia earned a MLA from UC Berkeley and a PhD in Landscape Architecture and Ecological Urbanism from the University of São Paulo. She is a Principal at Studio-MLA and a Senior partner of a design firm in São Paulo, Brazil.



# Speakers



Patricia Algara, ASLA  
BASE Landscape Architecture

Patricia Algara was born and raised in Mexico, she is the founder and president of BASE. A recognized leader in sustainable design and community involvement, Patricia creates landscapes that immerse people of all backgrounds and abilities in learning, exploration and play. Patricia's community involvement and advocacy expand the boundaries of traditional landscape architecture. She founded an NGO that creates healthy habitats for pollinators. She has lectured at many universities and has won two national faculty ASLA awards. She received her MLA from UC Berkeley in 2007.



Mia Lehrer, FASLA  
Studio-MLA

Mia Lehrer was born in El Salvador in a family that engaged in community leadership. Her father founded a land conservation and youth camping program aimed at helping disadvantaged youth. Her mother started a microlending program for women in the 1960s. Mia founded Studio-MLA, a design firm recognized for progressive landscape design, advocacy for sustainable and people-friendly public places, and catalyzing work for a climate-appropriate future. Mia has led the design and implementation of ambitious public and private projects including the LA NFL Stadium, the LA County Natural History Museum Gardens, Vista Hermosa Park and many Los Angeles River-related projects.



L. Irene Compadre, ASLA  
Arbolope Studio

L. Irene Compadre, PLA is the Founding Principal & Design Director of Arbolope Studio, an award-winning Landscape Architecture, Urban Design and Public Art practice based in St. Louis, MO. An experimental firm that prioritizes high-quality design, ecology-systems, and social-equity; Arbolope's work ranges from intimate spaces such as the Strauss Park "Heart of the Community" landscape in St. Louis, to large scale masterplans including "El Agua y La UTPL", for the UTPL in Loja, Ecuador. Irene holds a Master's Degree in Landscape Architecture from Washington University in St. Louis where she now teaches Landscape Architecture, Architecture, and Urban Design.



# Learning Objectives

- Understand the ways in which a practice built on passion and understanding of others can be a catalyst for social change
- Identify the importance of Latina and immigrant representation in the design profession
- Connect with other Latinas in Landscape Architecture and create a networking platform
- Motivate Latinas and other individuals from underrepresented communities to step into leadership roles
- Gain insight into the rewards and drawbacks of leadership and entrepreneurship

# Session Outlines

## 1.0 Introduction

## 2.0 Firm Origins and Personal Stories

### 2.1 General challenges and opportunities encountered

- a) Mia Lehrer – Studio-MLA
- b) Irene Compadre – Arbolope Studio
- c) Patricia Algara - BASE Landscape Architecture

## 3.0 Latinas in Leadership (25 minutes)

### 3.1 Obstacle to achieving Leadership

### 3.2 Essential characteristics of Latina leaders

- a) High integrity
- b) Marianismo
- c) New Latina
- d) Transformational leader
- e) Visionary

### 3.3 Positive influencers

- a) Successful educational attainment
- b) Participating in leadership training
- c) Possessing self-confidence
- d) Having role models
- e) Religious influence
- f) Family influence.

### 3.4 How to create a plan for success



# Notes



A series of horizontal dotted lines for taking notes.