

# SIMPLE SCANNER

## Touchscreen Scanner Kiosk



### KEY FEATURES

- ABBYY® Fine Reader Powered OCR
- Patented Book-Edge LED Scanner (Designed to Protect your Book's Spine)
- One Pass, Duplex Scanning (Both Sides of the Page at the Same Time)
- CBORD® & Blackboard™ Certified
- Multilingual Text Recognition
- 17" Touch Screen Computer
- Seamless Integration with Convergent's Print Management System

### Touchscreen Interface

Our touchscreen guides the user through the entire scanning process. Step-by-step instructions include setting options for file formats, scan quality, colour settings (colour, black & white, grayscale), file naming and destinations.

### Save Scanned Items As:

PDF	JPEG	Word Documents
PDF/A	Secure PDF	Searchable PDF
TIFF	PNG	Compressed PDF
... and more		

### Translation & Text-to-Audio

Our Translation Service Subscription Package allows users to translate documents from text-to-text into 60+ languages, or from text-to-audio into 30+ languages. This presents a unique service opportunity the library can offer to newcomers and international students in your community, as well as to those with accessibility needs.



## Book-Edge & Sheetfed Scanner

Scan up to 11" X 17" books, documents, photos and more with the Simple Scanner's patented book-edge LED scanner and S400 duplex document scanner (20 ppm/40 ipm).

Our Sheetfed Scanner option is a One Pass, Duplex Scanner capable of handling 40 ppm/80 ipm, and supports up to 75 pages.

## High Speed Simple Scanning To:



## Benefits

- Many libraries use the Simple Scanner as part of their green initiatives since it helps reduce paper and toner waste.
- The patented LED Book-Edge scanner saves energy by minimizing warm up times.
- Scanned documents are safe and secure, as all scanned files and email address are automatically deleted after each use.
- Detailed usage statistics are provided for billing reconciliation on charged services, and to assist in workflow and deployment strategies.
- Full Coverage Warranty for 1 year on hardware & software from installation date, which includes any updates that become available. Defective units are replaced via an "advanced exchange program" in order to minimize downtime, providing assurance that is second to none - at no additional cost.

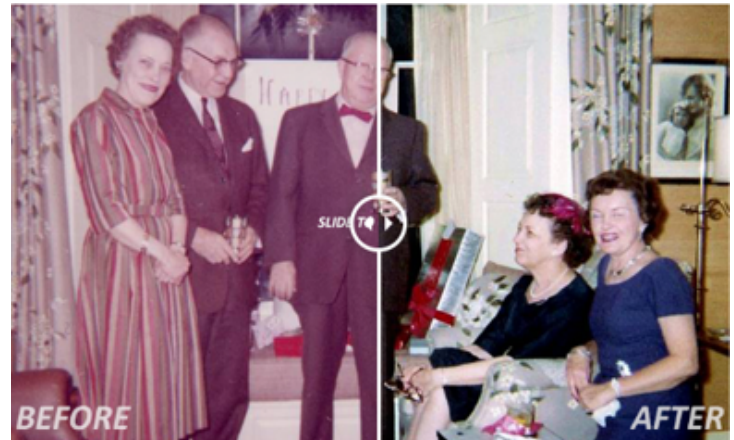
*Convergent*  
Library Technologies

## Contact Us:

sales@CLibTech.com  
1-866-213-8880 x113  
CLibTech.com

## Image Enhancement

Image Enhancement Service now available with Simple Scanner! Transforms scanned photos and newspapers from faded, low contrast to bright and defined.



## Special Features

- Convert a scanned page into a Searchable PDF file in seconds.
- Auto-crops, auto-straightens and auto-oriens every scanned page, eliminating the hassle of manually editing files after scanning.
- Patented book-edge scanner's design eliminates blurry or dark imaging in a book gutter's area
- Compatible with any USB Drive (no proprietary formats).
- Powered by ABBYY® Fine Reader Technology for unmatched Optical Character Recognition Accuracy for documents as large as 11" x 17".

## Accessibility

The touchscreen's multilingual interface is available in 25 languages. Also equipped with an accessibility magnifier and a high-contrast setting for visually impaired users, makes enabling use for all users to be self-sufficient thereby reducing need for staff intervention.