

BAKER

Environments For Science™



PIONEERING TOMORROW, TODAY!
- FOR OVER 6 DECADES -

- THE BEST PROTECTION -

STERILGARD® e3

Class II Type A2 Biosafety Cabinet. The most energy efficient, comfortable and safe A2 cabinet in the industry.



- Multiple energy-saving features equals up to 60% increase in energy efficiency
- Safest work environment with new StediFLOW™ self-adjusting motor technology
- Most comfortable working environment available with reduced noise and vibration
- 30% more filter life and less impact on the environment
- More energy efficient and brighter lighting system for easier viewing and reduced eyestrain



NCB™ e3

Class II Type B1 Biosafety Cabinet. Developed to exceed the National Cancer Institute's Expectations...and yours.



- All exhaust air is removed directly from the work area and pulled through a dedicated exhaust duct into the facility's separate exhaust system
- Vapors and gases emitted from vessels or work behind the air split approximately half way back from the cabinet front - are removed and not recirculated
- Dual supply HEPA filters assure that all positive pressure areas are free of particulate contamination. Recirculated air is HEPA-filtered immediately below the work surface before it is passed through a HEPA supply filter above the work area



BIOCHEMGARD® e3

Class II Type B2 Biosafety Cabinet. The most energy efficient, comfortable and safe B2 cabinet in the industry.



- A 70% reduction in electrical power compared to traditional B2 cabinets
- Increased motor blower reserve extends filter life for less downtime
- Continuously safe work environment with self-adjusting motor technology enhances productivity
- Optional fume hood package for versatile laboratory design



ISOGARD®

Class III Glovebox. Designed to Handle Hazardous Microbiological Agents or Pharmaceutical Potent Compounds.



- Pass-through and main chamber incorporate uniform unidirectional airflow to flush away any generated particles while bathing the work surface in HEPA-filtered air
- Constructed with thick safety glass, solid closed-cell silicone gaskets and supplied with hypalon gloves
- Stainless steel glove port design with one-piece sleeve-and-glove assembly allows gloves to be replaced or changed without breaking containment



AEROPROTECT 360°

Aseptic Contamination Enclosure. Optimum personnel & environment protection.



- 360° visibility to the work area for easy monitoring
- 8" [203mm] sash opening allows access to the work surface and is the primary means of access to ensure user protection
- Front facing controls and gauges within easy reach when standing from both sides
- Dual force hinged front view screen and rear access, offering easy equipment loading



BIOPROTECT® e3

Walk-in Equipment Containment Enclosures. Designed expressly for high volume robotic and equipment applications.



- Flexible modular design for high-volume robotic and automated equipment applications
- Accommodates high-throughput robotic systems (including ancillary devices), ultra-centrifuges, flow cytometers, aerosol generators and other large laboratory equipment
- Ideal for high-throughput screening, combinatorial chemistry, immunology, tissue culture, clinical research, drug discovery, molecular biology, and quality control assays



ANIGARD® e3

Animal Transfer Station. Confidence you can rely on.



- Spacious, easily accessible work areas accommodate a variety of cage sizes and activities
- Ergonomic design with efficient lighting increases user comfort and visibility
- Designed for easy movement and maneuverability throughout the laboratory
- Offers up to ISO Class 4 (Class 10) protection by delivering HEPA-filtered, particulate-free air



EDGEGARD® HF

Horizontal Flow clean bench designed with you in mind. Baker's exclusive technology maximizes product protection and helps meet up to ISO Class 4 (Class 10) air cleanliness requirements.



- High-performance airflow system provides uniform airflow to the worksurface, extends filter life and minimizes maintenance costs
- HEPA supply filter with 99.99% minimum efficiency in capturing 0.3micrometer particulates
- Spacious, easily accessible work areas accommodate multiple users and a variety of applications and instrumentation



EDGEGARD® VF

EdgeGARD® Vertical Flow provides vertical, unidirectional and controlled airflow over the entire work surface, while reducing energy consumption, noise and airflow turbulence.



- ISO Class 4 (Class 10) cleanliness (for 0.5 micrometer particles)
- One-piece stainless steel work surface helps prevent surface contamination
- Easy to move and maneuver when configured with mobile stand, casters and pull bars
- Slanted 10° viewscreen for operator comfort and direct line-of-sight viewing
- Well-lighted workspace reduces eyestrain



STERILSHIELD®

Compounding Aseptic Isolator (CAI). Designed specifically for ultimate product protection of non-hazardous drugs.



- Offers a contained, pressurized work area for pharmacy applications
- One of the most comfortable isolators in the industry, with oval gloveports that offer easy reach to interior surfaces, and adjustable height stand
- HEPA-filtered, unidirectional airflow with better than ISO Class 5 (Class 100) air cleanliness conditions to prevent contaminants from entering the work area



CHEMOSHIELD®

Compounding Aseptic Containment Isolator (CACI). Offers a contained, pressurized work area for pharmacy applications.



- One of the most comfortable isolators in the industry, with oval gloveports that offer easy reach to interior surfaces, and adjustable height stand
- Slanted, top-hinged view screen allows for full opening for loading and unloading of pharmacy instrumentation or equipment
- HEPA-filtered, unidirectional airflow with better than ISO Class 5 (Class100) air cleanliness conditions to prevent contaminants from entering the work area



AIR SENTRY CHEMICAL FUME HOOD POWERED BY LAB CRAFTERS

Fume hoods designed for unparalleled safety for critical laboratory applications.



- Substantially reduces roll effect (fluctuations in the airflow that may cause harm to the worker)
- Offers a streamlined, unobstructed work area
- Minimizes lingering concentrations above and behind the view screen
- Reduces contaminant concentrations near the edge of the sash(window), reducing potential exposure hazard to personnel



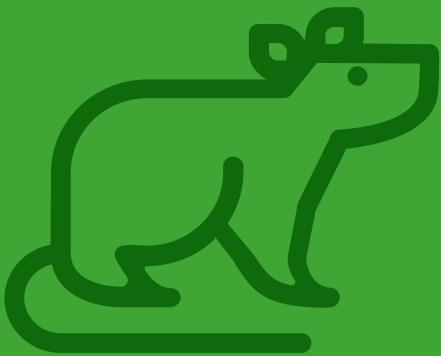
Baker's portfolio of contamination control solutions can be found within many industries, for a wide variety of applications in research and clinical care. Please consult your biosafety professional to understand what is right for you and your application.

BAKER

Environments For Science™



PIONEERING TOMORROW TODAY



www.bakerco.com

