



Quality Assurance

We care about your results and we are committed to providing you the highest quality custom diet products by:

- Operating under ISO 9001:2015 standards
- Ensuring that all diets are manufactured in accordance with formulation specifications
- Inspection of production records and final product integrity by our Quality Assurance Department
- Maintaining formulation records in a secure database
- Having a robust vermin control program
- Storing lot retention samples of both ingredients and final products on site
- Having climate controlled storage areas



Contact Information

Nutritional: Jaime L. Lecker, PhD
Phone: 800-996-9908 ext. 112
Email: jlecker@bio-serv.com

Veterinary: Karen Froberg-Fejko, LATg, VMD
Phone: 800-996-9908 ext. 135
Email: kfroberg@bio-serv.com

National Sales Manager: Karena Thek, MBA, CMAR
Cell: 908-255-9145
Email: kthek@bio-serv.com



Custom Diets



For more information:
800-996-9908 (U.S. and Canada)
908-996-2155 (Int'l)
E-mail sales@bio-serv.com

www.bio-serv.com

3 Foster Lane, Suite 201, Flemington, NJ 08822

 **Bio-Serv®**
Advancing Science • Enriching Animals

Bio-Serv Custom Diets

Our custom diets are diets formulated according to the research requirements of the customer. We can reproduce a previously published formulation, modify any existing formula or create a new formula based on customer specifications.

Research protocols may require dietary manipulation of micro-nutrient profiles to induce disease models or to investigate the mechanisms by which specific nutrients or compounds impact disease states.

The most common type of custom diet used for nutritional manipulation is a purified diet. Purified diets are formulated with refined ingredients such that each ingredient contributes primarily one nutrient. This allows for precise manipulation, customization and reproducibility of the diet’s nutrient composition.

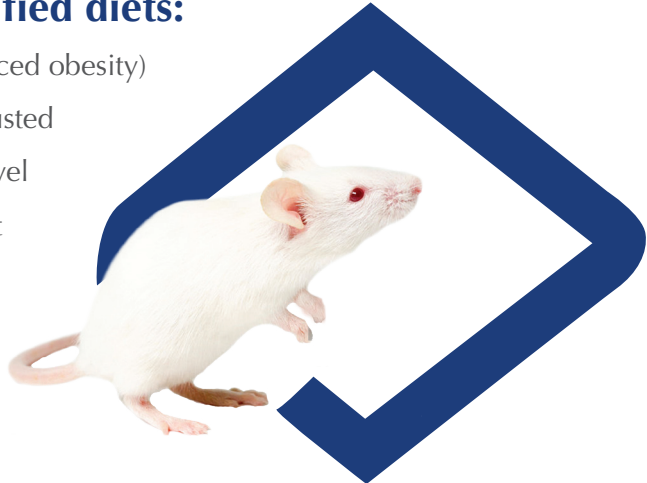
Committed to Excellence

- Consistent quality with exceptional traceability (ISO Certified)
- Guaranteed results
- Competitive pricing
- Timely delivery
- Responsive service by our nutritional and veterinary experts



Examples of common dietary manipulation of purified diets:

- Fat type and level (diet induced obesity)
- Protein and amino acid adjusted
- Carbohydrate source and level
- Vitamin and mineral content
- Cholesterol (atherogenic)
- Fiber source and level



The most common type of custom diet used for the incorporation and delivery of medications and compounds is a grain-based diet. Adding compounds to a grain-based diet allows the medication to be delivered without having to deviate from their maintenance diet.

Examples of compounds added to grain-based diets:

Doxycycline	Tamoxifen	Fenbendazole
Pain Relievers (Carprofen, Meloxicam)	Antibiotics (Helicobacter, SCIDS)	Cholesterol

Your supplied additives can be incorporated in either grain-based or purified diets. These diets are formulated to include test compounds such as medications, nutraceuticals, food ingredients and preclinical compounds to allow for convenient and accurate low-stress dosing.

Forms of Custom Diets:



- Dough:** soft, cookie dough consistency
- Gel:** firm but moist diet that is both a food and water source
- Liquid:** powder diet that is suspendable in ethanol or water
- Pellet:** cold pressed pellets protect nutrients from air, light and moisture
- Powder:** used for incorporating compounds at your research site
- Precision Pellets:** precise weight round pellets in sizes 14 mg – 1 gm
- Precision Tablet:** precise weight flat tablets in sizes 3 gm – 10 gm



Custom diets can be packed according to your needs:

We offer gamma-irradiation for all custom diets at an additional fee.

- Smaller packaging
- Heat sealed bags
- Vacuum packaging
- Light protective packaging

