

# Made for Tolerance

Plant-Based *and*  
Clinically Proven

PEDIATRIC FORMULAS



#1 RECOMMENDED  
Plant-Based Formula\*

#1 RECOMMENDED  
1.5 kcal/mL Peptide†

katefarms®

\* Independent data report on plant-based formula distributor volume in home care, acute care, and long-term care.

† GHX Medical Distribution Market, 1.5 kcal/mL, per 100 kcal prescribed, 10/1/19-9/30/20.

# Made for *Tolerance* so Kids Can *Thrive*

#1 RECOMMENDED  
Plant-Based Formula\*

#1 RECOMMENDED  
1.5 kcal/mL Peptide†



		Nutren Junior®‡	PediaSure® Grow & Gain†	Peptamen Junior®‡	PediaSure® Peptide†
✓ <b>EASILY DIGESTED ORGANIC PEA PROTEIN</b>	Organic pea protein with a PDCAAS§ of 1.0 and a complete amino acid profile	No	No	No	No
✓ <b>FUNCTIONAL INGREDIENTS TO SUPPORT GUT HEALTH</b>	Organic agave inulin in a clinically effective amount to improve GI tolerance¹  Clinically effective amount of a phytonutrient blend provides antioxidants²,³	Pea fiber (insoluble), FOS, chicory inulin  No	scFOS, soy fiber (includes insoluble)  No	Pea fiber (insoluble), PHGG  No	scFOS  No
✓ <b>LOWER OSMOLALITY TO SUPPORT GI TOLERANCE</b>	300-350 mOsm/kg water	350	525	450-567	390-480
✓ <b>TASTES GREAT</b>	Mild taste may support adherence	—	—	—	—
✓ <b>MADE WITHOUT COMMON ALLERGENS</b>	Does not contain milk, soybeans, tree nuts, peanuts, wheat or corn	Milk, soy, corn	Milk, soy, corn, fish	Milk, soy, corn, fish	Milk, soy, corn, fish
✓ <b>MADE WITHOUT ARTIFICIAL INGREDIENTS</b>	Does not contain artificial sweeteners, colors, preservatives, carrageenan or maltodextrin	Maltodextrin, artificial flavor, stevia, carrageenan	Maltodextrin, artificial flavor, carrageenan	Maltodextrin, monk fruit, sucralose	Maltodextrin, artificial flavor, carrageenan, sucralose, acesulfame potassium
✓ <b>CERTIFIED USDA ORGANIC AND NON-GMO</b>		No	No	No	No

\* Independent data report on plant-based formula distributor volume in home care, acute care, and long-term care.

† GHX Medical Distribution Market, 1.5 kcal/mL, per 100 kcal prescribed, 10/1/19-9/30/20.

‡ Included in comparison: Nutren Junior® Fiber Vanilla, PediaSure® Grow & Gain with Fiber Vanilla, Peptamen Junior® 1.5 Vanilla, Peptamen Junior® Fiber Vanilla, PediaSure® Peptide 1.5 Vanilla, PediaSure® Peptide 1.0 Vanilla. These are trademarks of entities unrelated to Kate Farms. Product information accessed March 2021 from manufacturer product guides, websites, marketing literature and product packaging.

§ Protein Digestibility Corrected Amino Acid Score.

katefarms®

# Made for *Tolerance* so Kids Can *Thrive*

#1 RECOMMENDED  
Plant-Based Formula\*

#1 RECOMMENDED  
1.5 kcal/mL Peptide†

## Key Features for Pediatric Nutrition

	Kate Farms Pediatric Peptide 1.0	Kate Farms Pediatric 1.2	Kate Farms Pediatric Peptide 1.5	Nutren Junior® Fiber	PediaSure® Grow & Gain	Peptamen Junior®	PediaSure® Peptide
Omega 6:3 ratio	3:1	2.5:1	2.5:1-3:1	5.8:1	4.6:1	3.7:1-5.4:1	2.3:1
MCT:LCT ratio	50:50	40:60	40:60-50:50	20:80	No MCT	60:40	60:40
Sugar (g per 250mL)	9	9	9	Not Listed	18	Not Listed	2-7‡
Vitamin D (IU per carton)	300	300	300	152	160	152-228	237



### Easy to use, *easily* available

- Sole source or supplemental nutrition
- Flows smoothly through tubes down to 6.5 Fr
- Nationally available in hospitals and home care



### Eligible for insurance coverage

- Medicare
- Medicaid
- Private plans
- Select WIC§ programs

\* Independent data report on plant-based formula distributor volume in home care, acute care, and long-term care.

† GHX Medical Distribution Market, 1.5 kcal/mL, per 100 kcal prescribed, 10/1/19-9/30/20.

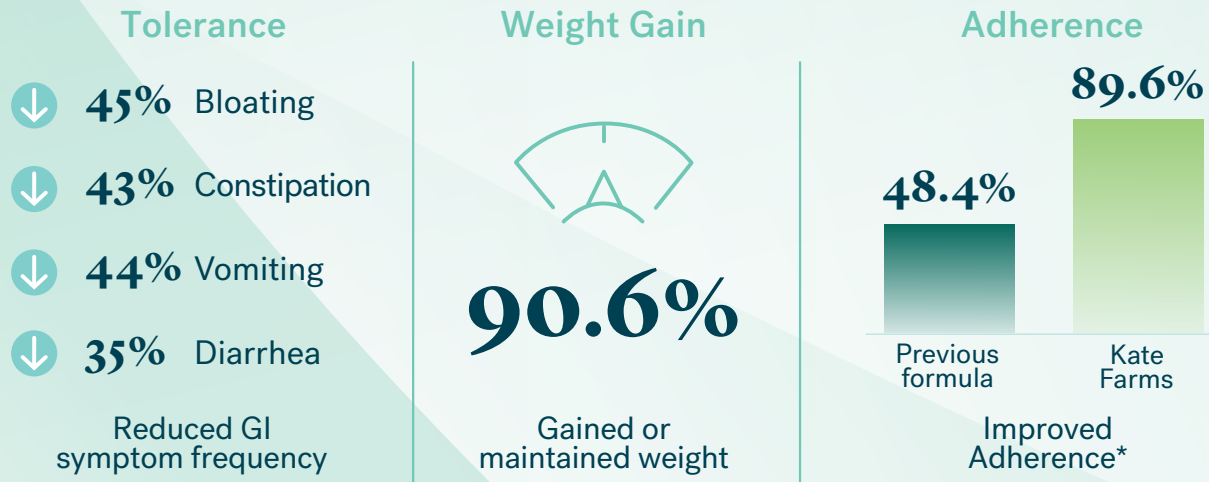
‡ With nonnutritive sweeteners.

§ WIC is a registered service mark of the U.S. Department of Agriculture for USDA's Special Supplemental Nutrition Program for Women, Infants and Children.

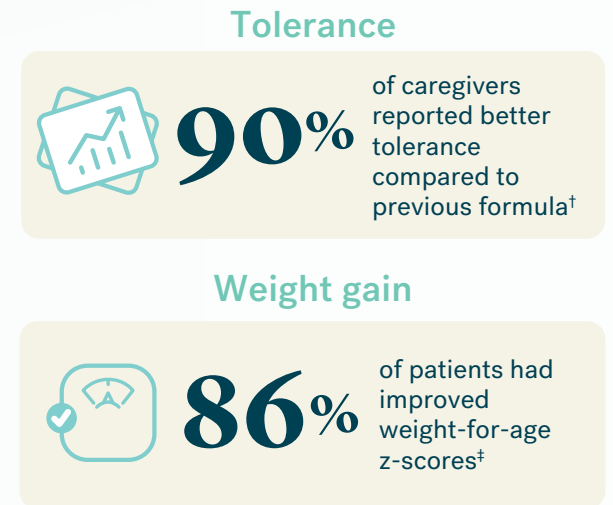


# Clinically proven to demonstrate improved tolerance, weight gain, and adherence

## Pediatric patients who switched to Kate Farms (n=159)<sup>4</sup>:



## Pediatric patients who switched to Kate Farms<sup>5</sup>:



## Additional data supporting safety and efficacy:

In patients with Crohn's disease<sup>6</sup>:

- Weight gain and improved tolerance
- Adherence to formula regimen

In a published case report of a patient status post bone marrow transplant<sup>7</sup>:

- Weight gain and improved tolerance
- No reported interaction with immunosuppressant medications

\* Adherence defined as consuming  $\geq 75\%$  of the formula prescribed.




<sup>†</sup> Tolerance questionnaires were completed for 10 patients: 90% of caregivers agreed that their child tolerated the plant-based formula better than their previous regimen.

<sup>‡</sup> For those patients <21 years old with a documented weight-for-age z-score (n=7), six showed improvement.

# Recommend Kate Farms® for Your Patients

#1 RECOMMENDED  
1.5 kcal/mL Peptide\*



Product	Kate Farms Pediatric Peptide 1.0 Vanilla	Kate Farms Pediatric Peptide 1.5 Vanilla & Plain	Kate Farms Pediatric Standard 1.2 Vanilla
HCPCS	<b>B4161</b> Hydrolyzed Protein, Pediatric	<b>B4161</b> Hydrolyzed Protein, Pediatric	<b>B4160</b> Intact Protein, Pediatric
In the same formula category as			

Peptamen Junior®, PediaSure®, and Nutren Junior® are trademarks of entities unrelated to Kate Farms.



**Kate Farms, Inc.**  
101 Innovation Place  
Santa Barbara, CA 93108  
O 805.845.2446 F 805.832.6119



**Request  
Samples**  
[katefarms.com/samples](https://katefarms.com/samples)



**Download  
the App**

**Clinically proven to  
demonstrate improved  
tolerance, weight gain,  
and adherence**

- ✓ **Easily digested pea protein**  
Organic pea protein with a Protein Digestibility Corrected Amino Acid Score of 1.0 and a complete amino acid profile.
- ✓ **Functional ingredients to support gut health**
  - Organic agave inulin in a clinically effective amount to improve GI tolerance.
  - Clinically effective amount of a phytonutrient blend provides antioxidants.
- ✓ **Lower osmolality to support GI tolerance**  
300–350 mOsm/kg water.
- ✓ **USDA Organic and Non-GMO**
- ✗ **Made without common allergens**  
Does not contain milk, eggs, fish, shellfish, tree nuts, peanuts, wheat, soybeans, or corn.
- ✗ **Made without artificial ingredients**  
Does not contain artificial sweeteners, colors, preservatives, carrageenan, or maltodextrin.
- ✗ **No unpleasant taste**  
Mild taste may support adherence for patients on oral nutrition and tube feeding

\* GHX Medical Distribution Market, 1.5 kcal/mL, per 100 kcal prescribed, 10/1/19-9/30/20.

**References:** 1. Holscher, H.D., et al. *Food & Function*. 2014;5(6):1142-1149. 2. Nemzer, B.V., et al. *Food Science and Nutrition*. 2014;828-839. 3. Nemzer, B., et al. *Food Science and Nutrition*. 2014;2:647-654. 4. Cohen, S.A., et al. *JPGN*. 2020;71(Suppl1):S454-456. 5. Cohen, S.A., et al. *JPEN*. 2020;44(3):274. 6. Orellana, D., et al. *JPEN*. 2020;44(3):190-191. 7. Bailey, M., et al. *JPEN*. 2020;44(3):226-227.