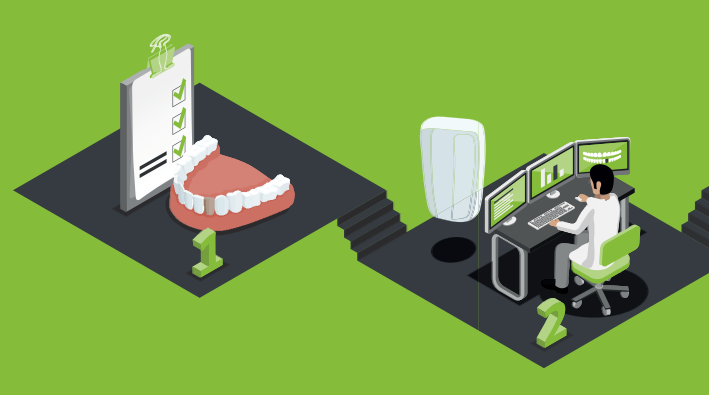


teethtoday™

“My life has changed because now I don’t have to think before I smile.”

- Matiel

6 steps to
your new
smile.



The Treatment Process

STEP-BY-STEP

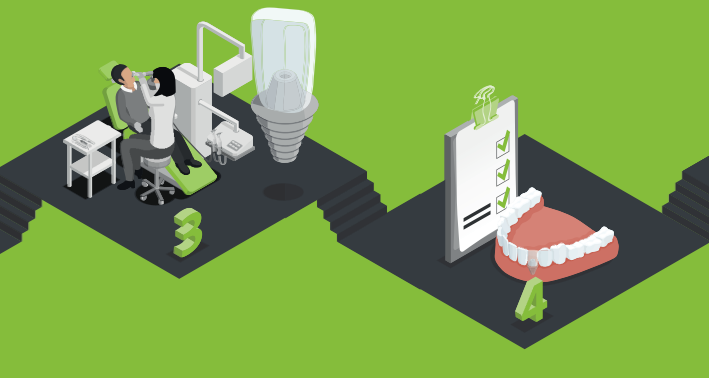
1 Consultation and Exam

We do a thorough review of your dental and medical history, then talk over your expectations and options.

2 Clinical Assessment, Planning and Creation of Your Prosthesis

A clinical assessment means that we'll review x-rays and other details of your current condition to confirm if the process is appropriate. If it is, we'll plan your procedure, create a digital 3-D image or manual impression and create your temporary prosthesis – your new tooth or teeth!





3 Preparation and Placement

Your procedure could possibly include multiple steps all in the same appointment. If removing any teeth is required, that will be done first, followed by placement of the implant. The implant is anchored to the bone in your jaw. If more bone volume is needed, we will use bone substitute at that time. Finally, the temporary prosthesis is connected to the implant(s), giving you your new smile that looks and feels natural!

4 Follow-Up Appointment

A follow-up appointment is typically planned for two weeks after your procedure as a general check-up.





5 Impression Taking for Your Final Prosthesis

Once your gums and bone are healed, your new implant and surrounding tissue will be ready for your final prosthesis, which is created to perfectly match the color of adjacent teeth.

6 Fitting Your Final Prosthesis

We'll remove the temporary prosthesis and fit your permanent solution in place. We'll also make any final adjustments to help ensure your bite is comfortable, functional, easy to clean and natural looking.

teethtoday™





Reduce the number of procedures needed.

That's good news if you don't want to wait several months with a gap in your teeth, or you're replacing all your teeth with dental implants. Careful and precise planning makes it all possible. Typically, these are the steps leading to your new smile.





Straumann® stands for premium Swiss quality implants and precision innovation, delivering confidence to patients and dentists, backed by one of the largest global expert networks available. Straumann pushes boundaries to inspire the next generation of dental care, centered on patient health, quality of life and long-term durability.



Learn more about
TeethToday at
teethtoday.com
or by scanning this
QR code.



Straumann North America
60 Minuteman Road, Andover, MA 01810

If you have inadequate bone volume and /or quality, local root remnants, serious internal medical problems, uncontrolled bleeding disorders, inadequate wound healing capacity, not completed maxillary and mandibular growth, poor general state of health, drug or alcohol abuse, psychoses, pro-longed therapy-resistant functional disorders, xerostomia, weakened immune system, illnesses requiring periodic use of steroids, uncontrollable endocrine disorders, bruxism and other parafunctional habits, these conditions might present a risk for you. Consult your clinician to find out if dental implants are right for you. The possibility of a minimally invasive procedure and receiving your new teeth on the day of surgery depends on many factors, such as bone presence and quality, dental history, implant location, and implant stability. Your clinician will fully describe the possible scenarios to you during consultation prior to surgery.

NAMLIT.1415

ifu.straumann.com