

THE PROOF IS IN THE PERFORATION!

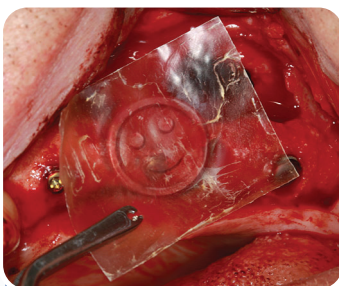


Schneiderian Membrane Repair With BioXclude

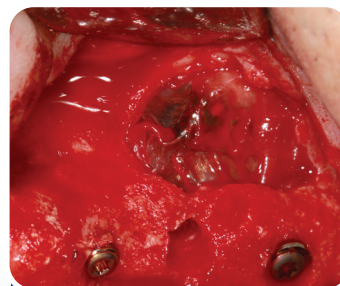
Use of BioXclude to repair sinus perforations is simple fast and effective. Working as a self adhering “patch” without the need for fixation, Purion® processed deepithelialized amnion-chorion allograft (BioXclude®) provides an effective solution to Schneiderian membrane repair ^{1,2}.



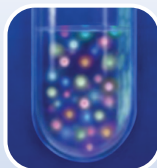
Choose a size that will extend beyond the perforation by at least 5 mm.



Dry BioXclude is placed over the perforation. Once placed it will hydrate and tightly seal over the perforation.



Allow 20 - 30 seconds for BioXclude to fully hydrate creating an ideal site to place bone grafting materials.



The osteogenic potential of the maxillary sinus Schneiderian membrane was further explored in a recent publication by Drs. Insua, Monje, Urban, et al ³. Their findings support the rationale for perforation repair using BioXclude, a membrane which contributes to healing. The active signaling proteins within BioXclude support angiogenesis and act as a stem cell “magnet” recruiting the body’s own mesenchymal stem cells to the site ^{4,5}.

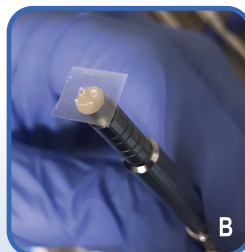
Simple

Fast

Effective

Minimally Invasive Crestal Sinus Lift

- Perfect application for 12 x 12 mm size.
- Easily applied with an osteotome for repair or reinforcement.
- An additional BioXclude may be placed and left intentionally exposed over the immediate implant to expand the zone and quality of keratinized tissue ⁶.

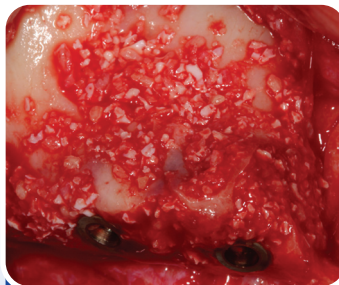


Lateral Window Approach

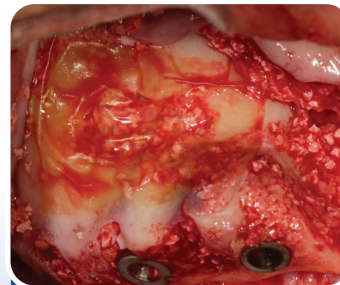
- For a lateral window approach a 20 x 30 mm size can be cut in half allowing for two 15 x 20 mm pieces: (1) piece to repair or reinforce the sinus membrane, and (1) a second piece to cover the lateral access window.



Lateral window



Bone graft placed

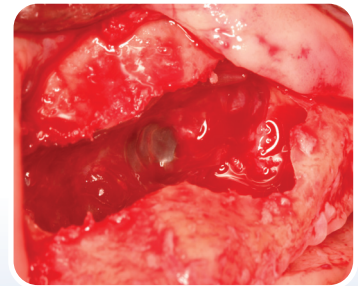
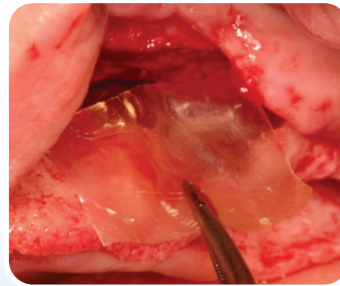
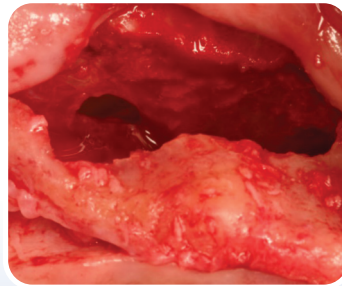
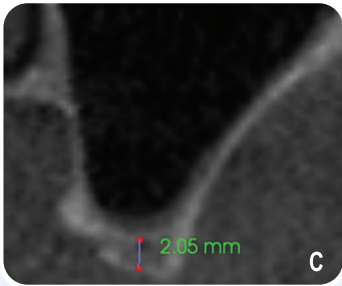


BioXclude placed

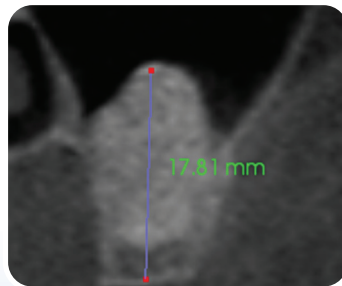
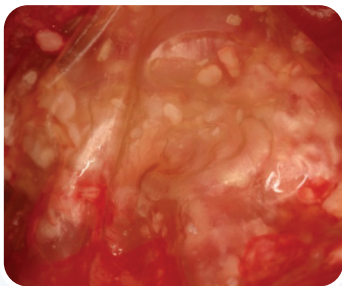
Why not choose a product that mimics the characteristics of the anatomy being repaired?



PROVEN CLINICAL EFFICACY WITH BIOXCLUDE



The pre-operative CBCT reveals only 2 - 3 mm of native crestal bone. Schneiderian membrane perforation occurs during sinus augmentation. A dry BioXclude is placed on the perforation to repair, tightly sealing it once hydrated. Particulate bone is then packed into the sinus cavity.



An additional BioXclude membrane is placed over the bone graft, covering the lateral window. Adequate bone is achieved at 5 months with implants placed and immediately loaded with a transitional prosthesis.

Holtzclaw, D. *J Perio* 2015; 86 (8): 936-940

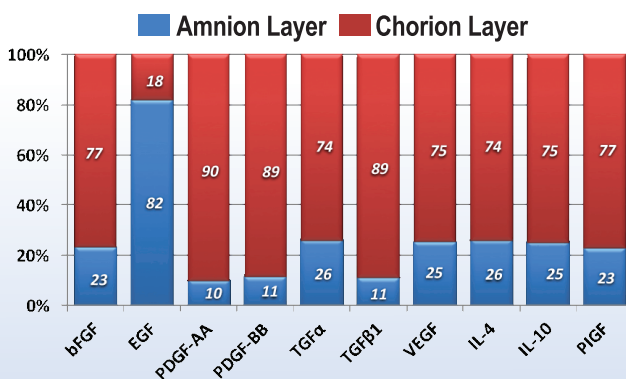
Sinus	Total Augmentations	Implants Placed	Implants Failed
Perforated	9	23	1
Non-Perforated	95	158	3

All Augmentations Allowed for Successful Restoration!

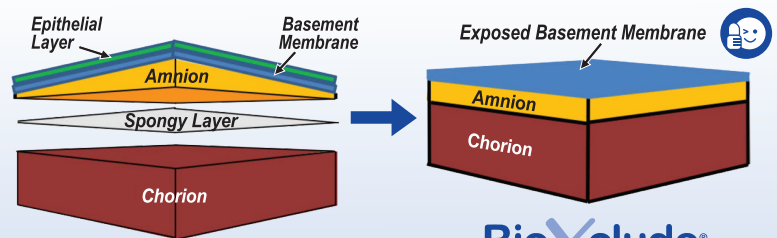
Growth Factors:
82% Chorion Layer
18% Amnion Layer

Benefits of the Chorion Layer⁷

- BioXclude is 4 - 5x thicker than amnion only allografts
- Contains 20x more growth factors than amnion only allografts
- On average the chorion layer contributes 82% of the growth factors



Optimized Amniotic Allograft



BioXclude®



The expedited initial healing process witnessed with BioXclude can contribute to decreased post-operative complications and modulate inflammation with less post-operative swelling and discomfort for your patient⁸.

1. Holtzclaw D. *J Imp Adv Clin Dent* 2014; 6(8): 11-21. 2. Holtzclaw D. *J Perio* 2015; 86(8): 936-940. 3. Insua A, Monje A, Irbán I, et al. *Int J Periodontics Restorative Dent* 2017; 37: e328-e336. 4. Koob T, Rennert R, Zabeck N et al. *Int Wound J* 2013; 10(5):493-500. 5. Koob T, Lim J, Massee M et al. *Vas Cell* 2014; 4(10): doi: 10.1186/2045-824X-6-10. 6. Maksoud M. *Clin Adv Periodontics* 2018; 8: 111-114. 7. Koob T, Lim J, Zabeck N et al. *J Biomed Mater Res B* 2015; DOI: 10.1002/jbm.b.33265. 8. Hassan M, Prakasam S, et al. *Int J Oral Maxillofac Implants* 2017; 32: 1389-1398. A. Photo courtesy of Arthur Yagudayev, DDS, MS, Denver, CO. B. Photo Courtesy of Eric Blamires, DDS, Denver, CO. C. Photos courtesy of Dan Holtzclaw, DDS, MS, Austin, TX.



Monday - Friday
6:30 am - 6:00 pm (MST)
www.snoasismedical.com



t: 866.521.8247
f: 720.259.1405
e: sales@snoasismedical.com

SNOASIS
MEDICAL
-BORN TO SMILE-

PR091801v01