



CONELOG[®]
PROGRESSIVE
implant system



BIOHORIZON[®]

conical performance at bone level

CONELOG® PROGRESSIVE implants are based on the clinically proven, user-friendly CONELOG® connection and successful BioHorizons buttress thread design. The combination of these proven design features delivers an implant system capable of treating a wide range of indications with modern concepts, including digital workflows and immediate protocols.

Flexible solutions - full range of prosthetic components serving all prosthetic indications and treatment concepts

Digital workflow - from planning to guided surgery and prosthetic restoration

Tapered body with buttress thread design and coronal anchoring thread for primary stability

Integrated platform switching

Diameter-reduced implants (Ø 3.3 mm) and a short implant length (7 mm) extend the range of indications

Promote® surface - predictable long-term success, outstanding clinical long-term results and comprehensive scientific documentation¹



CONELOG® connection benefits

- long conus for reduced micromovements ²
- superior positional stability in comparison to other conical systems ^{3,4}
- easy positioning with tactile feedback
- integrated platform switching
- "vertical fit feature" designed to minimize vertical discrepancy during workflow

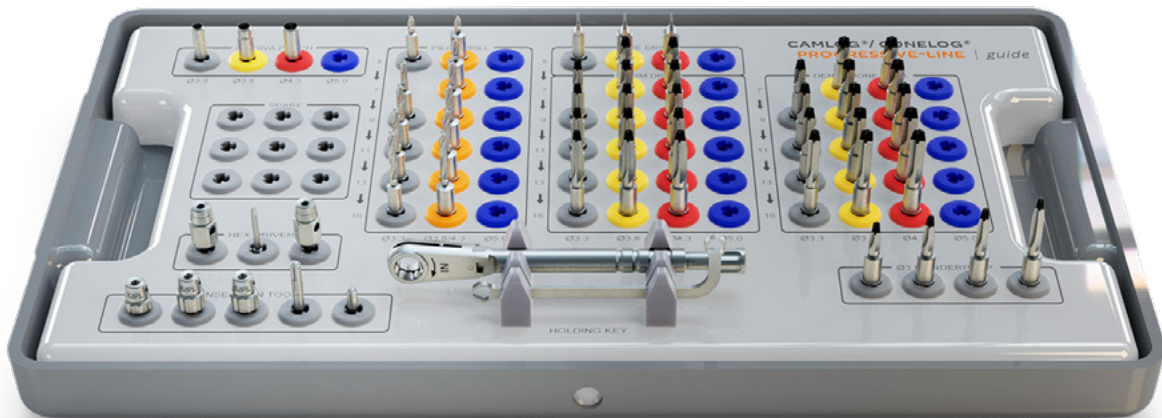


surgical kit features:

- compact tray design with all the required instruments for soft and dense bone protocols
- efficient color-coded surgical sequence
- validated for automated cleaning, disinfection and sterilization
- empty spare slots allow for customization

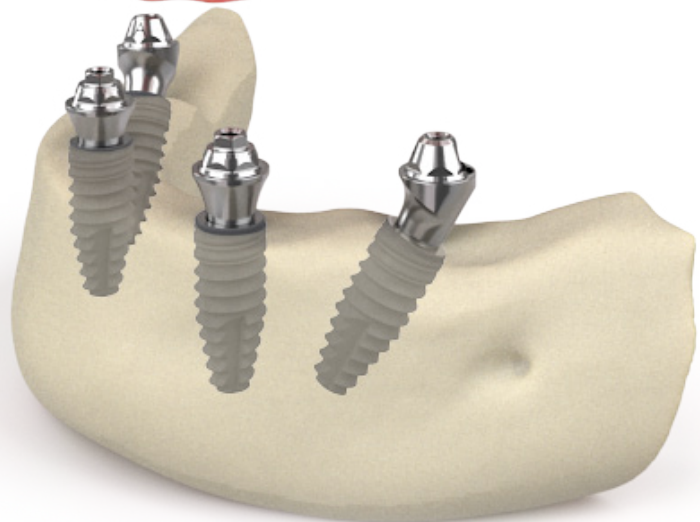
guided surgery

The guided surgery system features intuitive color-coded, keyless drills to simplify the surgical protocol and minimize the total number of instruments required. 3D treatment planning is possible in a range of software due to the systems open architecture design. Implant surgery can be completed predictably and accurately using the fully guided protocol, which controls all axis of implant placement.



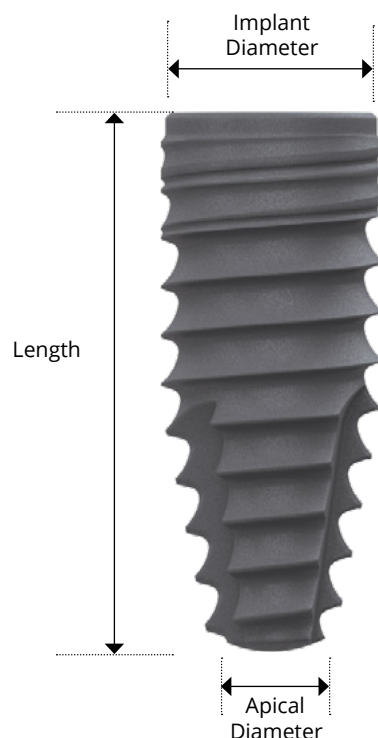
multi-unit

The multi-unit abutments for CONELOG® are designed to restore edentulous and partially edentulous arches. Available in multiple gingiva heights and angulations to support treatment in a wide variety of patients. Each abutment shares the same restorative platform, simplifying the restorative process and reducing the number of components required.



CONELOG® PROGRESSIVE implants

Snap-in and Screw-mounted insertion post



CONELOG® PROGRESSIVE-LINE implant, Promote® Plus

Includes insertion post (snap-in or screw-mounted) and cover screw.
Packaged sterile. Titanium Grade 4.

Snap-in Part Number	Screw-mounted Part Number	Implant Diameter	Length	Apical Diameter
C1086.3309	C1085.3309	3.3 mm	9 mm	2.2 mm
C1086.3311	C1085.3311		11 mm	
C1086.3313	C1085.3313		13 mm	
C1086.3316	C1085.3316		16 mm	
C1086.3807	C1085.3807	3.8 mm	7 mm	3.0 mm
C1086.3809	C1085.3809		9 mm	
C1086.3811	C1085.3811		11 mm	2.7 mm
C1086.3813	C1085.3813		13 mm	
C1086.3816	C1085.3816	4.3 mm	16 mm	3.0 mm
C1086.4307	C1085.4307		7 mm	
C1086.4309	C1085.4309		9 mm	
C1086.4311	C1085.4311		11 mm	
C1086.4313	C1085.4313	5.0 mm	13 mm	2.7 mm
C1086.4316	C1085.4316		16 mm	
C1086.5007	C1085.5007		7 mm	3.5 mm
C1086.5009	C1085.5009		9 mm	
C1086.5011	C1085.5011		11 mm	3.2 mm
C1086.5013	C1085.5013		13 mm	
C1086.5016	C1085.5016		16 mm	

Surgery set

CONELOG® PROGRESSIVE



J5300.0071

CONELOG® PROGRESSIVE-LINE Flex Surgery set

Includes the instrumentation required to place:
CONELOG® PROGRESSIVE according to the Flex protocol

Direct Offices

BioHorizons USA
888-246-8338 or 205-967-7880

BioHorizons Canada
866-468-8338

BioHorizons Spain
+34 91 713 10 84

BioHorizons UK
+44 (0)1344 752560

BioHorizons Chile
+56 (2) 23619519

BioHorizons Italy
800-063-040

BioHorizons Mexico
800-953-0498

Distributors

For contact information in our 90 countries, visit biohorizons.com



shop online at
store.biohorizons.com

References

1. CONELOG® Implant System – Facts and Figures at a Glance (White Paper), Art. No. XJ7815.09/2020
2. Hogg WS, Zulauf K, Mehrhof J, Nelson K. The Influence of Torque Tightening on the Position Stability of the Abutment in Conical Implant-Abutment Connections. Int J Prosthodont. 2015 Sep-Oct;28(5):538-41.
3. Schwarz F, Alcoforado G, Nelson K, Schaer A, Taylor T, Beuer F, Strietzel FP. Impact of implant–abutment connection, positioning of the machined collar/microgap, and platform switching on crestal bone level changes. CAMLOG Foundation Consensus Report. Clin.Oral Impl. Res. 2014; 25(11): 1301-1303.
4. Semper-Hogg, W, Kraft, S, Stiller, S et al. Analytical and experimental position stability of the abutment in different dental implant systems with a conical implant–abutment connection Clin Oral Invest (2013) 17: 1017

Not all products shown or described in this literature are available in all countries. CONELOG® and Promote® are registered trademarks of Camlog Biotechnologies GmbH. BioHorizons® is a registered trademark of BioHorizons. Original language is English. ©BioHorizons. All Rights Reserved.



ML0618



REV A APR 2021