

OssGuide™

Absorbable Collagen Membrane For GBR



For Dental Surgery

OssGuide™ is high purified type I collagen membrane derived from porcine tissue for guided bone regeneration. It is used as a curtain for guidance of periodontium in treatment of GBR etc., being used with bone graft material (BGM) or direct adhesion to damaged bone or periodontium.

● Advantage of the Product

High Quality

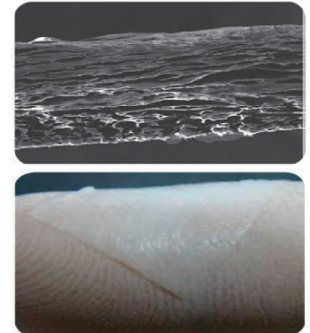
OssGuide™ has excellent tensile strength and is not easily torn.
OssGuide™ is absorbed slowly and is maintained in the body for a long period.

Easy Handling

OssGuide™ has excellent flexibility and shows good performance on adhesion and cohesion to the bones.
OssGuide™ is excellent for holding a shape.

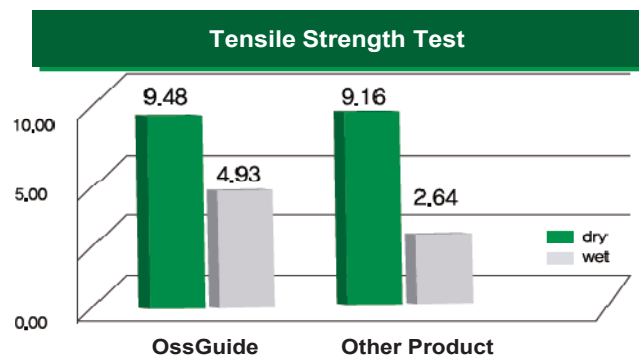
Convenience

OssGuide™ is fast hydrated and not easily torn while in use.
OssGuide™ can be used regardless of front and back side.



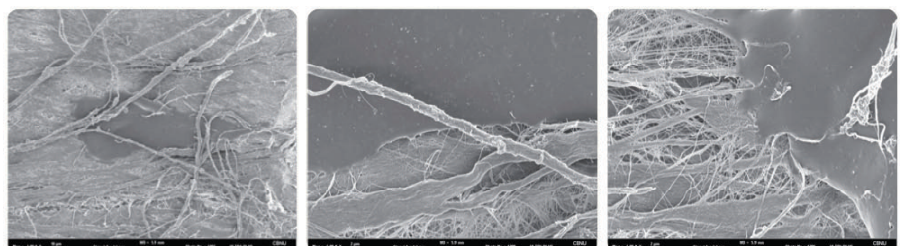
● Comparison with other product

| Product | Interior Dissolution period |
|---------------|-----------------------------|
| OssGuide | After 3 months |
| Other product | Within 2 months |

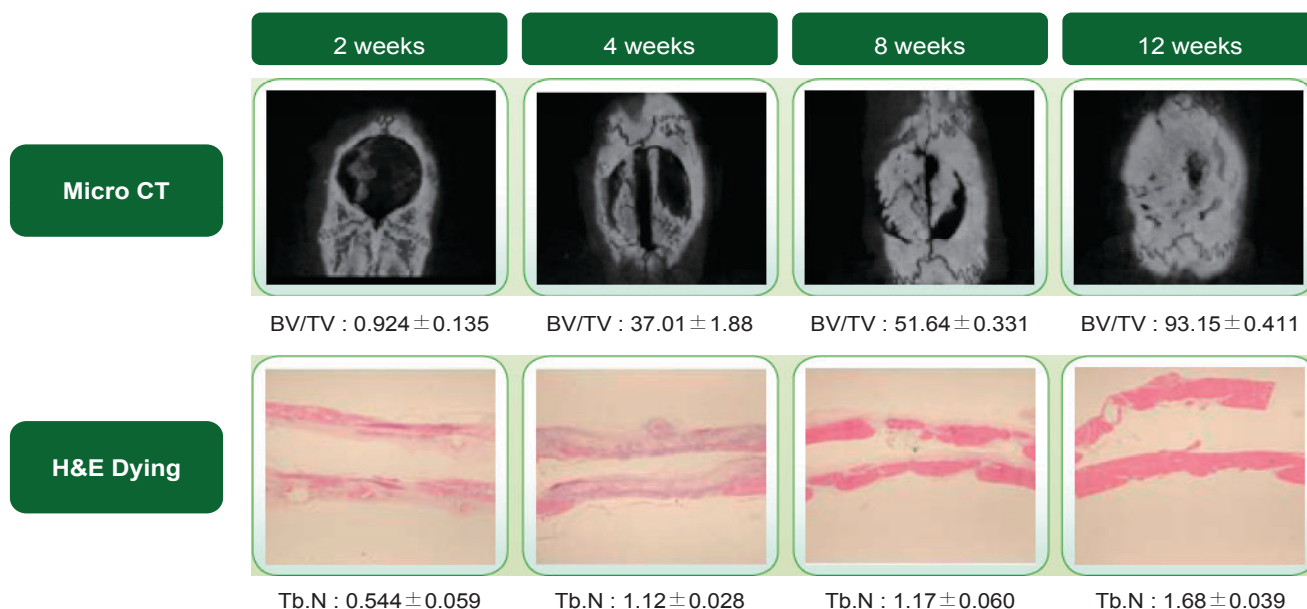


● Osteoblast Cell Adhesion Test

After the cultivation by U-2OS osteoblast cell line, it is confirmed by SEM that bone cell is well adhered and replicated on surface of OssGuide™ in day 3.



● Bone Volume, Bone Intensity Test (Rat's Calvarial Bone Defect Model)

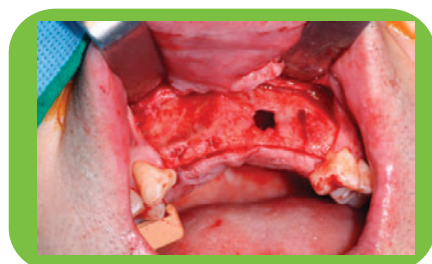


* BV/TV : trabeculae volume / total volume

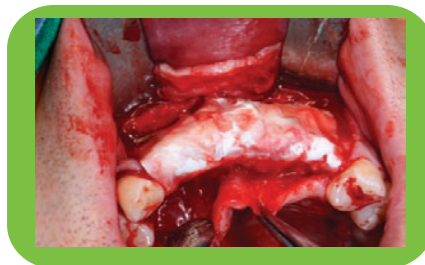
* Tb.N : number of trabeculae, higher value means stronger bone intensity

- In reviewing the result of micro CT in rat's calvarial bone defect models, after 12 weeks from the operation, a bone volume of OssGuide™ is increased up to 93.15 and bone intensity is up to 1.68. In reviewing the opinion of tissue inspection, after 12 weeks from the operation, OssGuide™ shows perfect bone generation.

● Clinical Application of OssGuide™



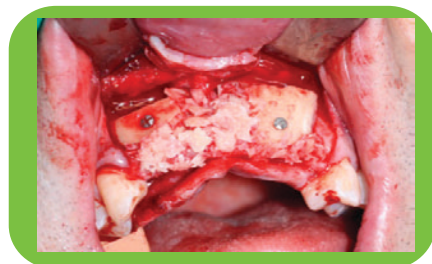
Before Application



Application of OssGuide™



After 4 months



Application of Bone graft



Opened, After 4 months

● Ordering Information

Buy 5 Get 1 Free

| Item Name | Type | Size | |
|-----------|--------|-------------|----------|
| OssGuide™ | OG1520 | 15mm x 20mm | \$65.00 |
| | OG2030 | 20mm x 30mm | \$89.00 |
| | OG3040 | 30mm x 40mm | \$149.00 |

Quality and Value since 1989 • Toll Free: 800-452-0582 • www.dit-usa.com