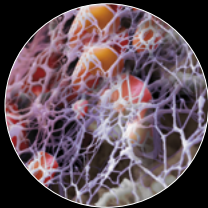


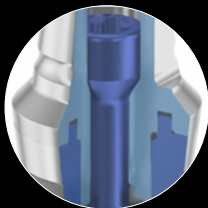
The Thommen Implant System

# MULTIGUARD Protection Solution

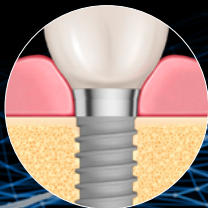
Protecting the optimal bio-response  
for the life of your patient



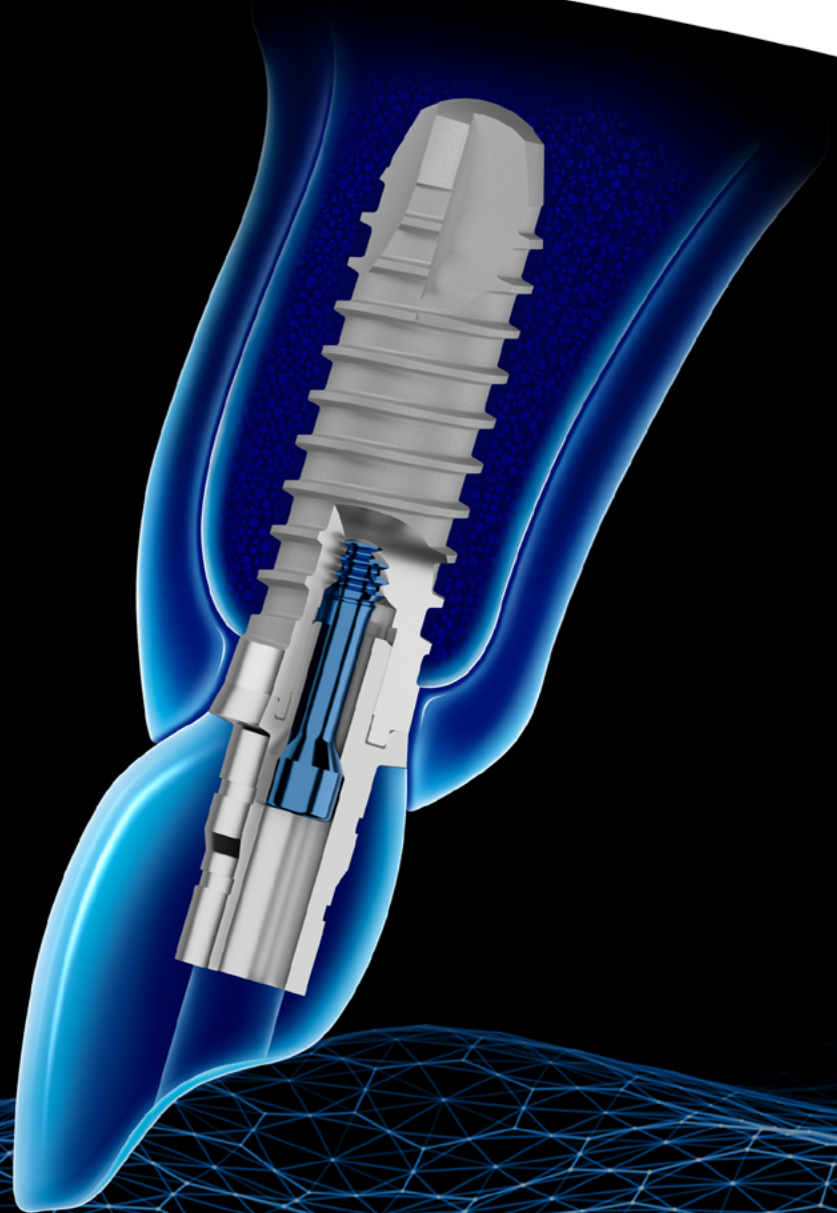
**INTEGUARD®**  
Matrix



**EVERGUARD®**  
Connection



**TISSUEGUARD**  
Collar



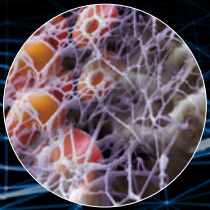
Driven by science, not trends.

# Driven by science, not trends.

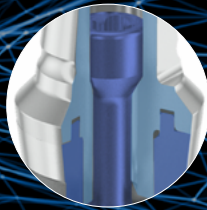
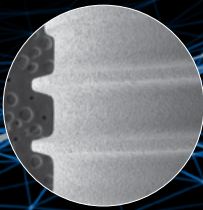
With a long-term view of clinical success, our product development is driven by science, not trends. We deliver a single, comprehensive implant system, based on a unique, proven design—the MULTIGUARD Protection Solution—that we've optimized over three decades of clinical success.

## MULTIGUARD Protection Solution

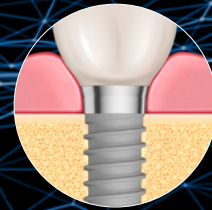
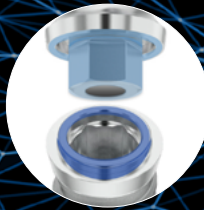
A combination of innovative features working together to protect implant integrity by maintaining mechanical stability and an optimal bio-response for the life of the patient.



**INTEGUARD® Matrix**



**EVERGUARD® Connection**



**TISSUEGUARD Collar**

Faster osseointegration is promoted by the implant surface INICELL® which is the superhydrophilic state of the proven sand-blasted and acid etched implant surface.

INICELL® is generated in a few seconds with the chairside conditioning system APLIQUIQ®.

The conditioning agent applied with APLIQUIQ® has an antimicrobial effect which reduces the risk of infection in the early healing phase.

The atraumatic implant bed preparation with the VECTODrills™, in combination with the Thommen implant thread profile, creates the optimal condition for fast and reliable osseointegration.

The EVERGUARD® Connection, with an internal hex and external stabilization ring, ensures optimal long-term stability of the implant abutment connection.

The connection design includes a vertical stop for consistent abutment position and preservation of the abutment screw's preload to avoid screw loosening.

The clever design of the reduced size abutment screw enables thicker implant and abutment walls and protects implant integrity.

The reduced screw access channel allows for improved restorative flexibility and aesthetics.

The TISSUEGUARD Collar encourages soft tissue adaptation to prevent bone loss and allows for surgical flexibility to place the machined collar into the bone depending on the clinical need.

The machined surface of the collar is optimal for soft tissue and is cleansable, which improves hygienic maintenance to reduce the risk of biologic complications, including peri-implantitis.

Supports optimal placement of the implant/abutment junction allowing for restorative flexibility and easy impression taking.

Smooth transition between implant and abutment leaves no void or ledge for bacteria and facilitates problem-free probing.

### Headquarters

Thommen Medical US  
1375 Euclid Avenue | Suite 450  
Cleveland | OH | 44115  
Tel. +1 866 319 9800 (toll free)  
Fax +1 216 583 9801  
info.us@thommenmedical.com  
orders.us@thommenmedical.com  
www.thommenmedical.com