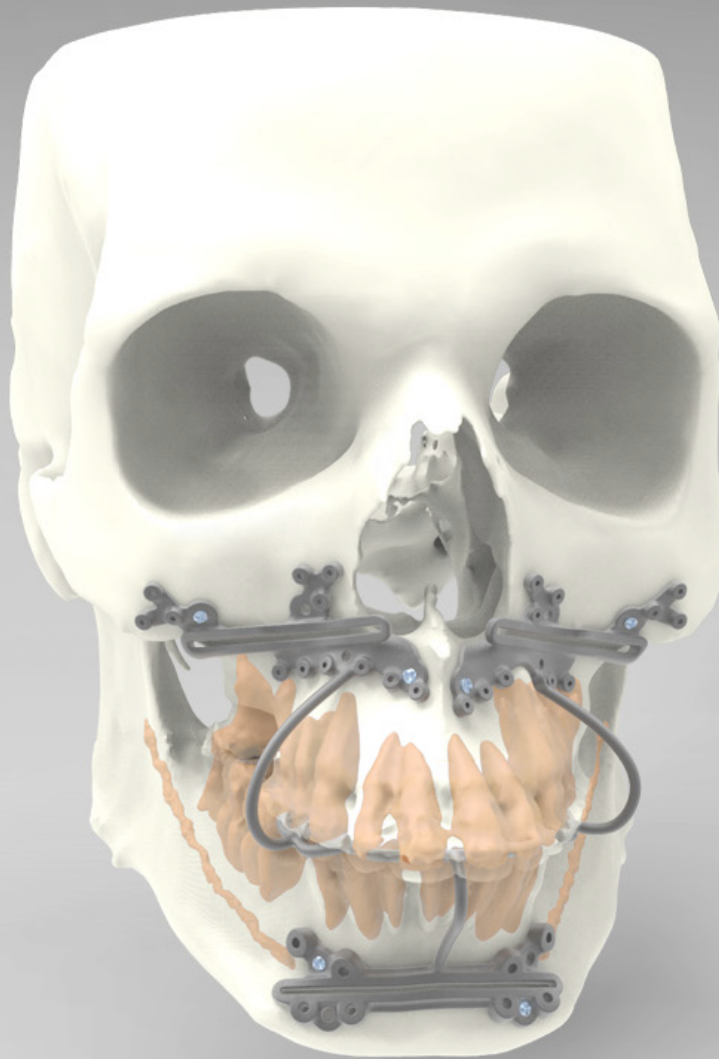


# IPS<sup>®</sup> Orthognathic Ti Occlusal Guides

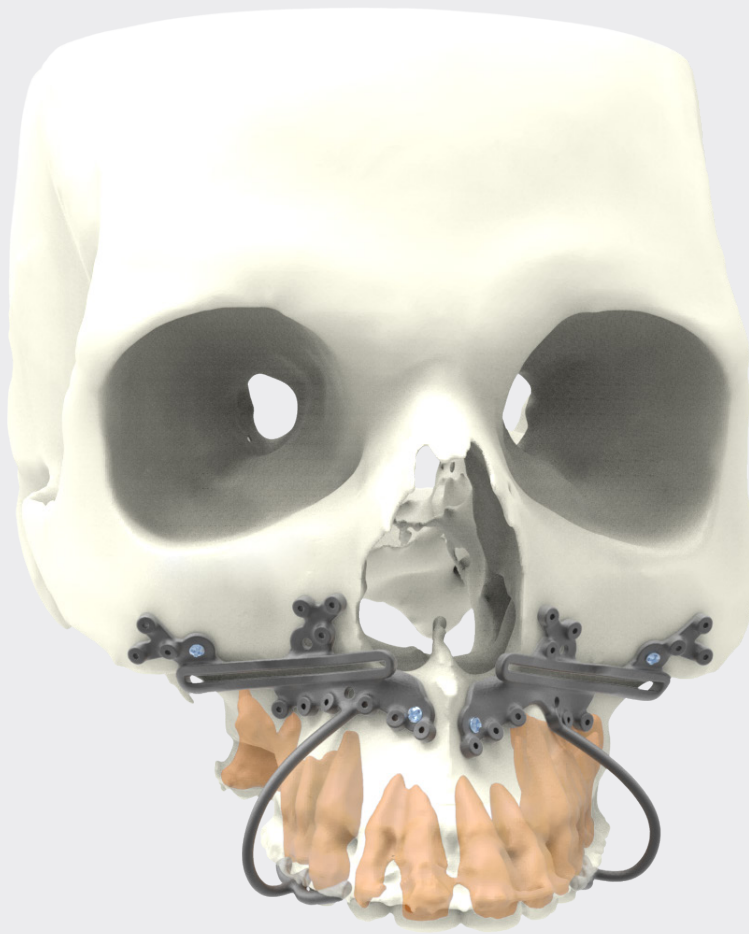


Individual Patient Solutions  
**every one is unique**

[www.klsmartinnorthamerica.com](http://www.klsmartinnorthamerica.com)

\*Patent Pending

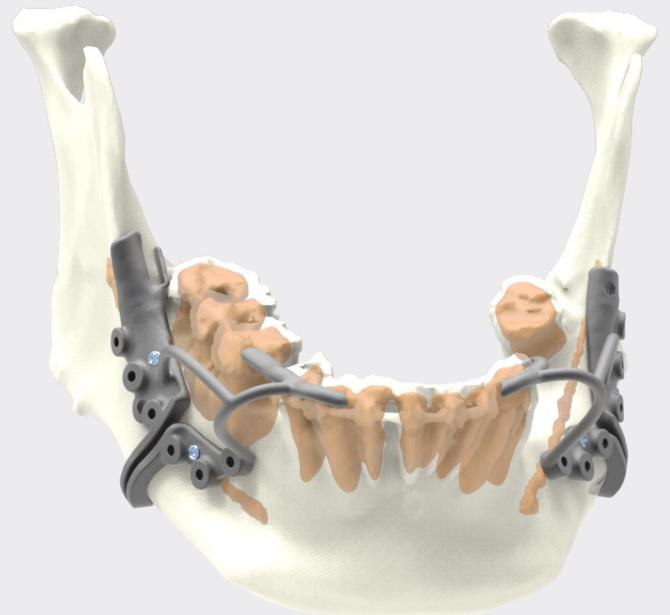
Products shown may not be licensed or cleared in all markets.  
Availability is subject to change without notice. Licensed for US.

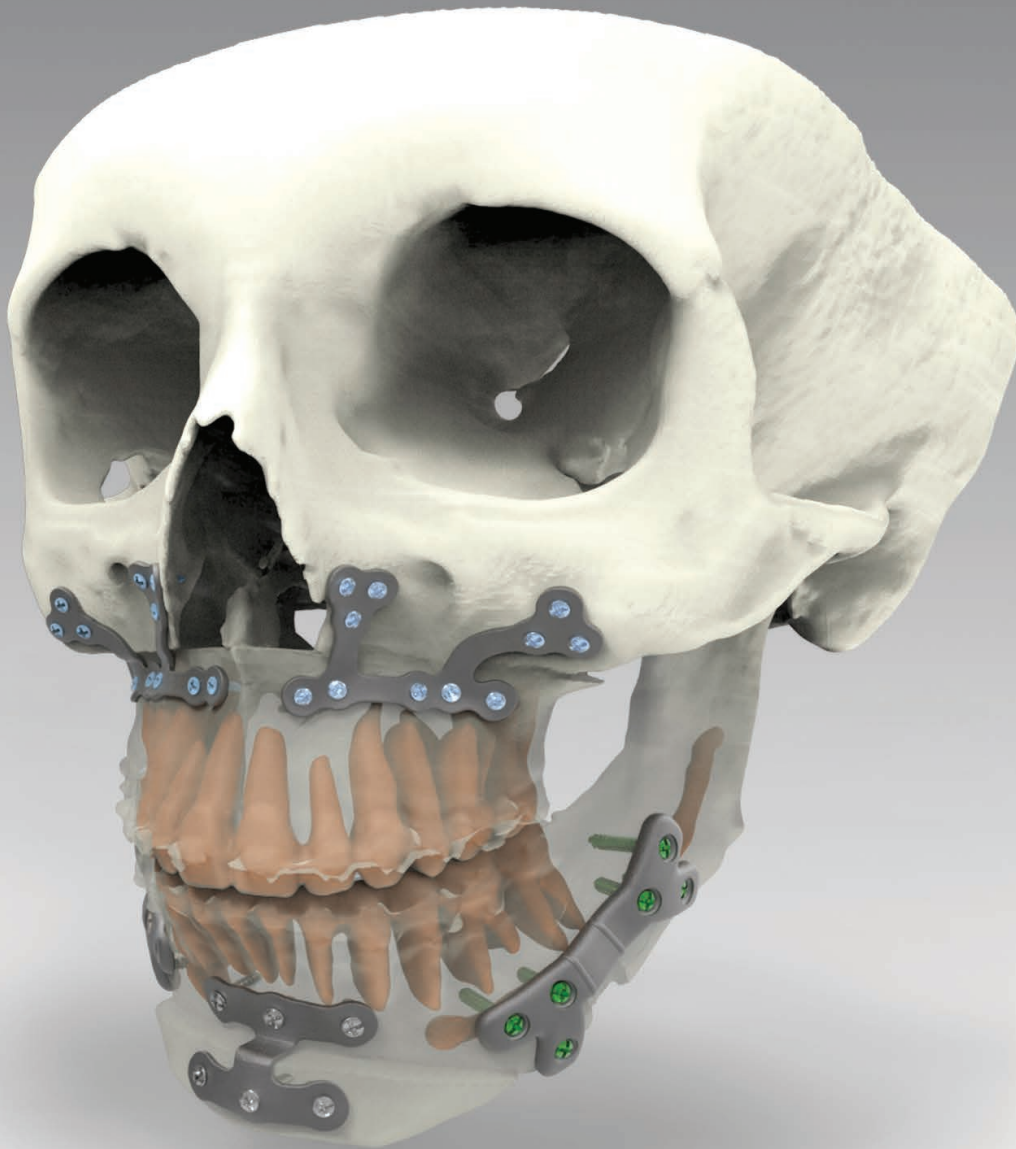


Utilizing additive manufacturing methods provides excellent guide registration while maintaining an overall low-profile construct.

All features such as predictive screw locations, fixation holes, cutting and impaction slots may be incorporated into our Ti Occlusal Guides.

Ti Occlusal Guides blend all the benefits of a polymer based occlusal guide with the rigidity of a titanium cutting guide.

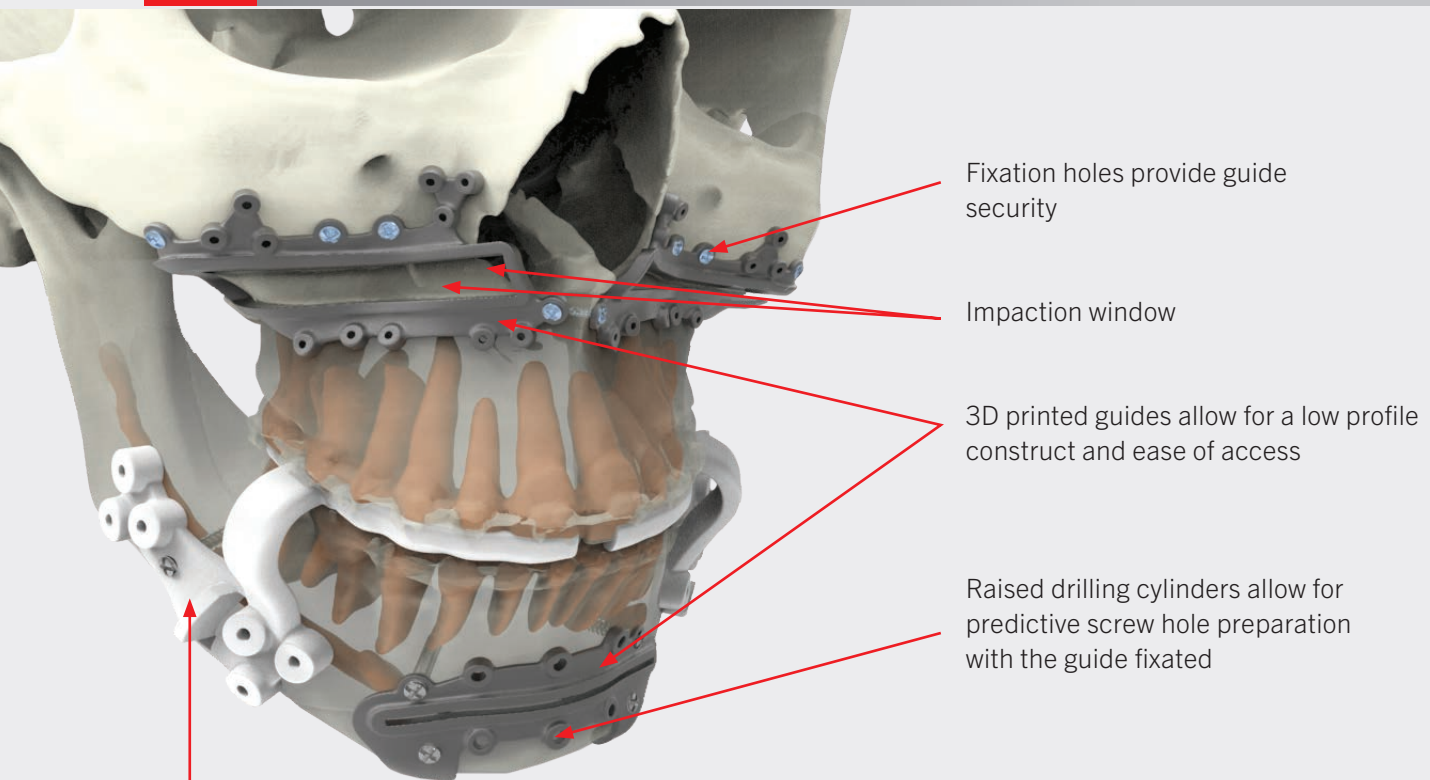




## **IPS** Orthognathic Implants and Guides

Individual Patient Solutions  
**every one is unique**

[www.klsmartinnorthamerica.com](http://www.klsmartinnorthamerica.com)

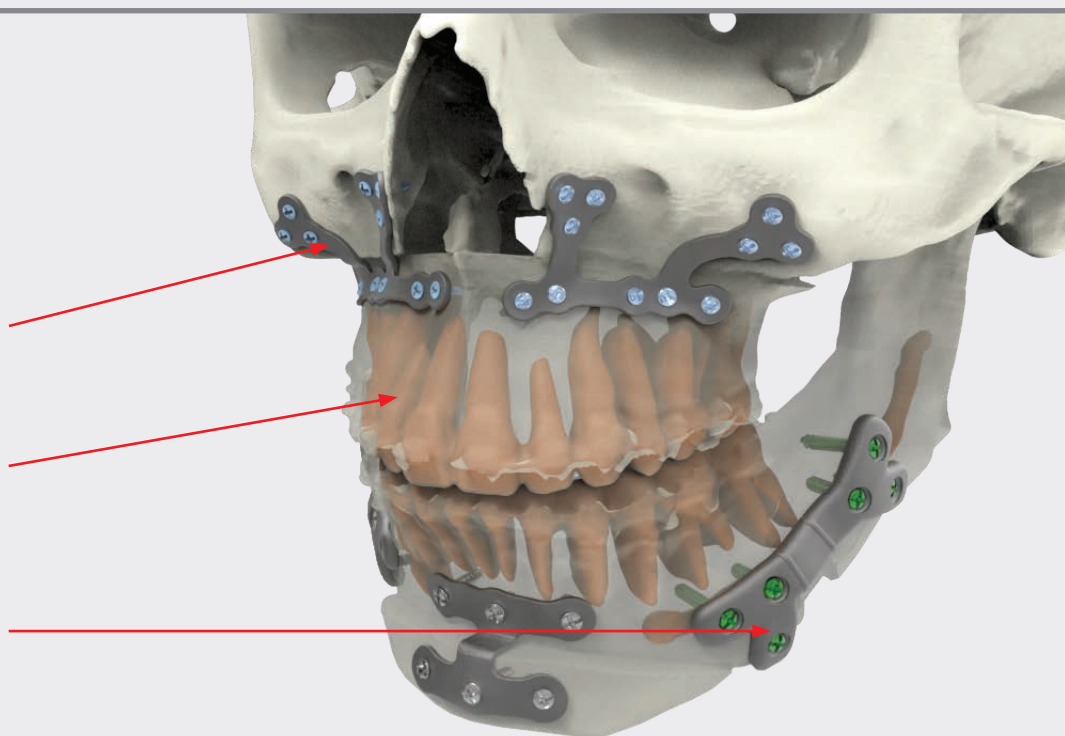


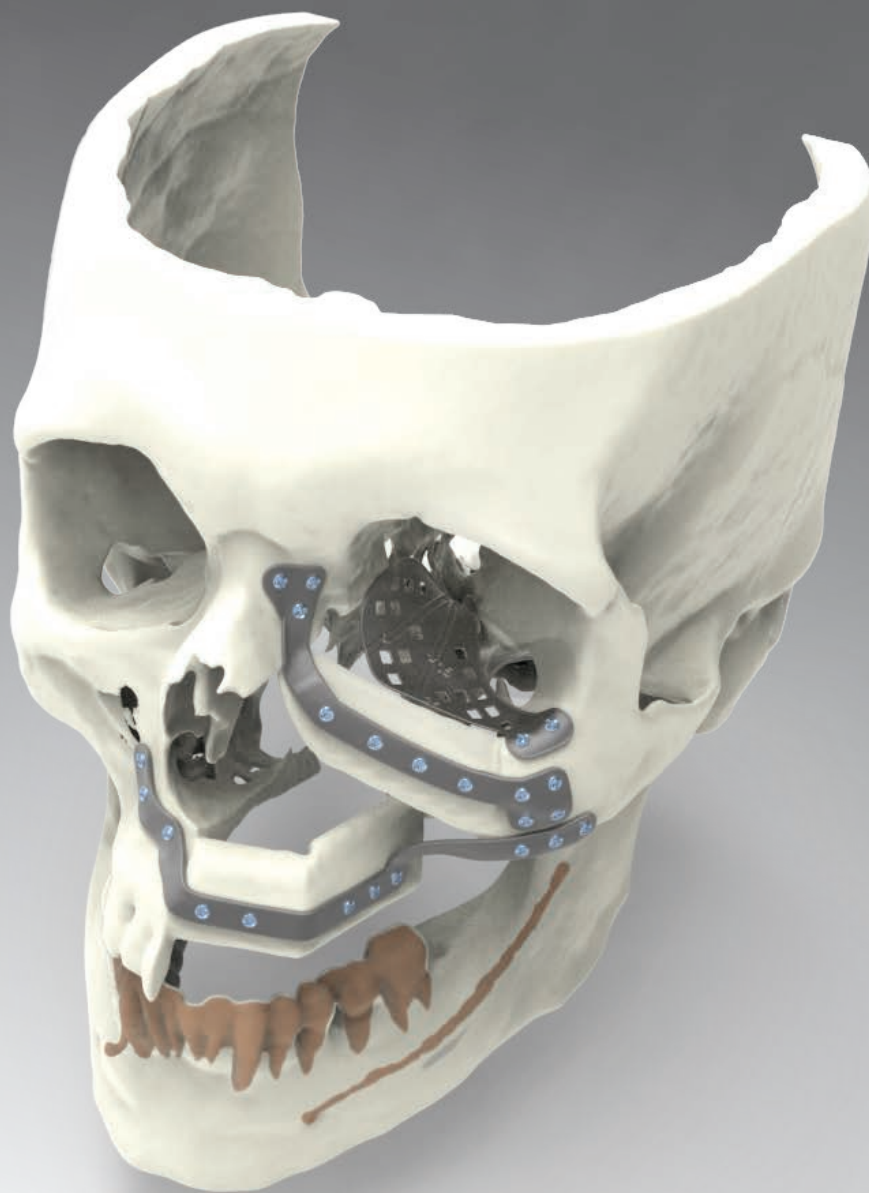
Polyamide guides allow for dentition registration

3D printed "U-Plates" are available

Detailed segmentation allows for optimal screw placement

Mandible plates are available with locking function



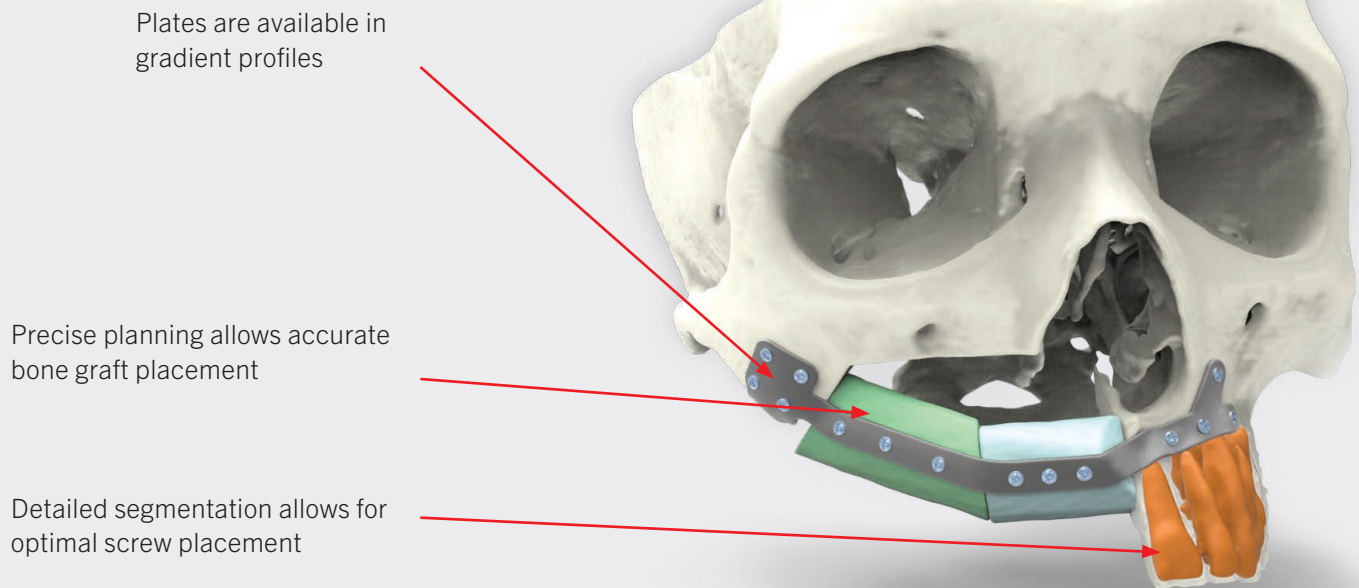
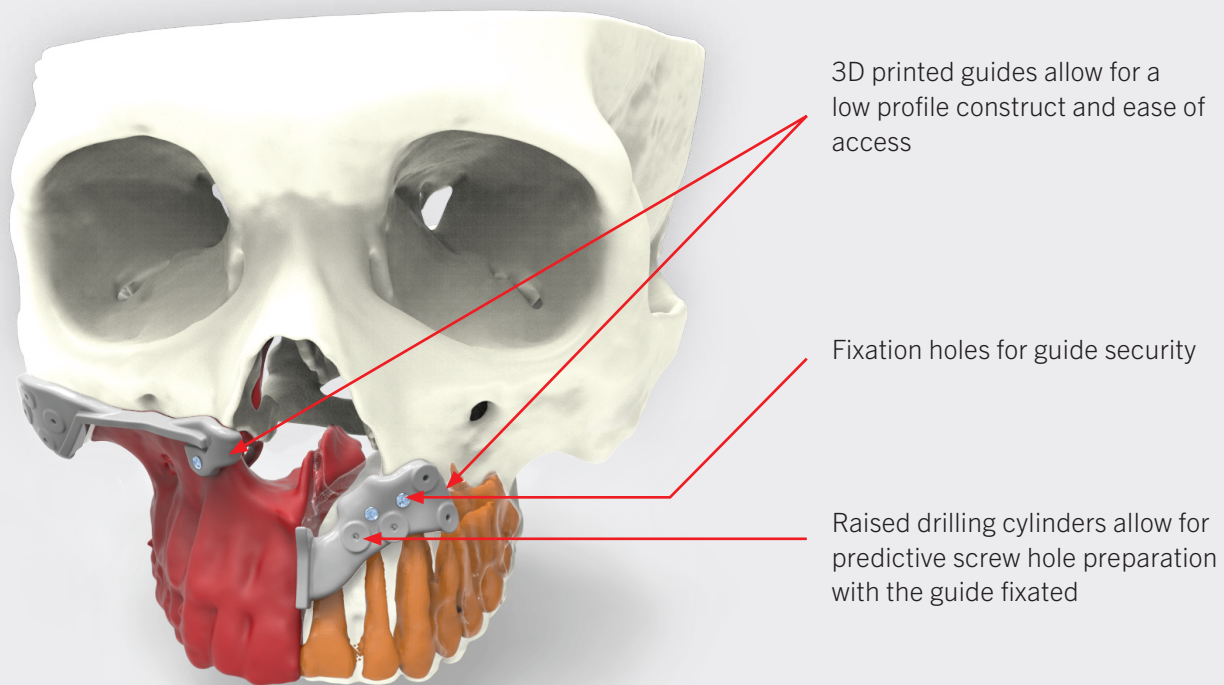


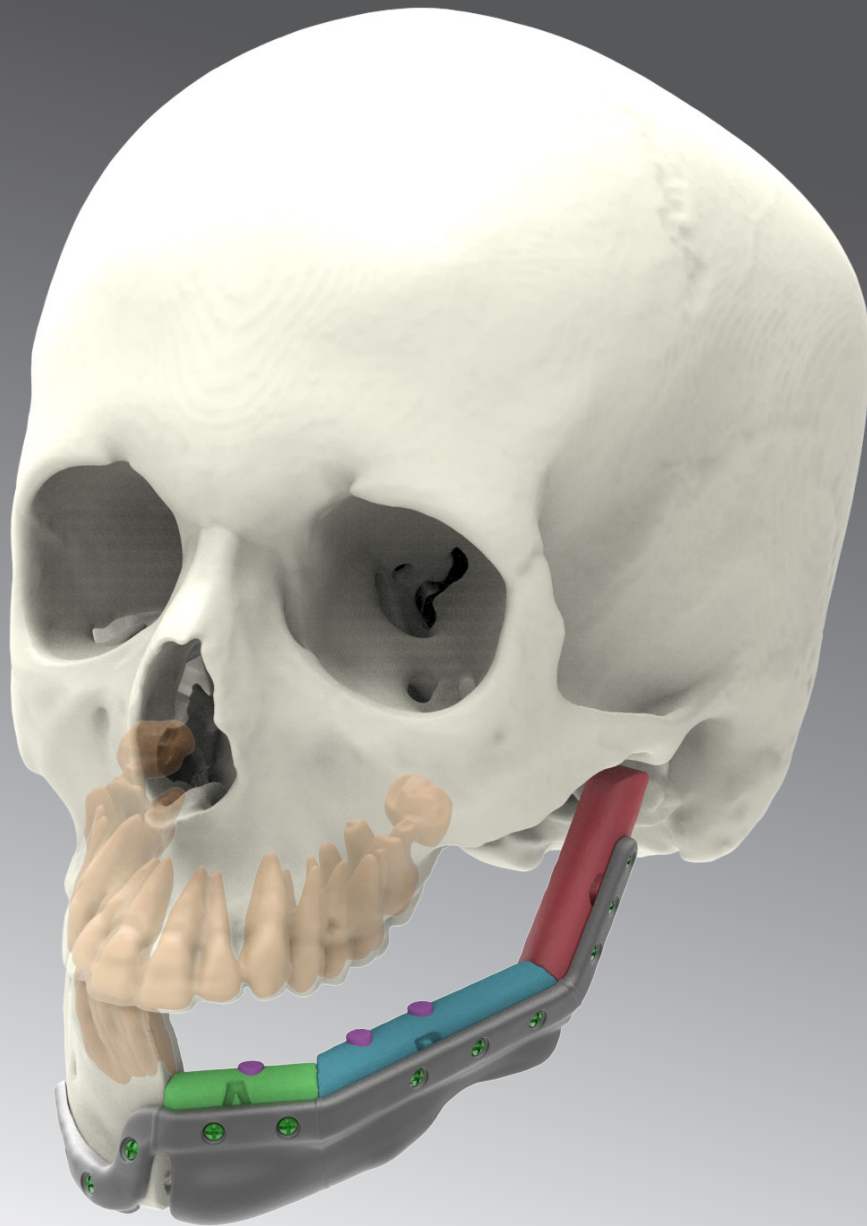
# **IPS** Midface Reconstruction

## Implants and Guides

Individual Patient Solutions  
**every one is unique**

[www.klsmartinnorthamerica.com](http://www.klsmartinnorthamerica.com)

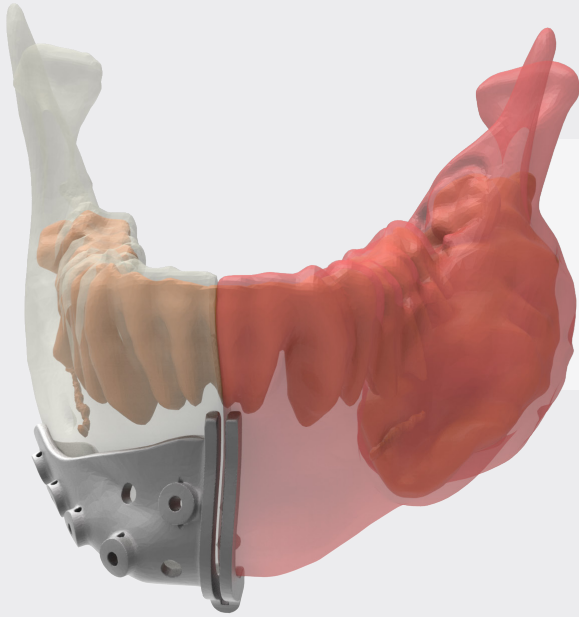




# **IPS**<sup>®</sup> Reconstruction Endoprosthesis

Individual Patient Solutions  
**every one is unique**

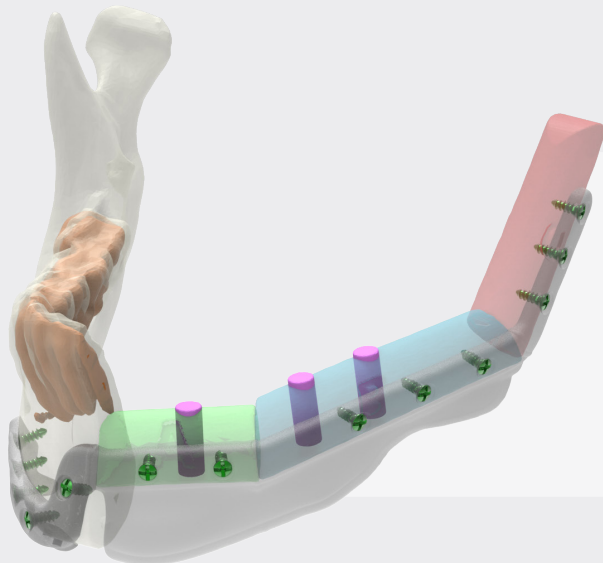
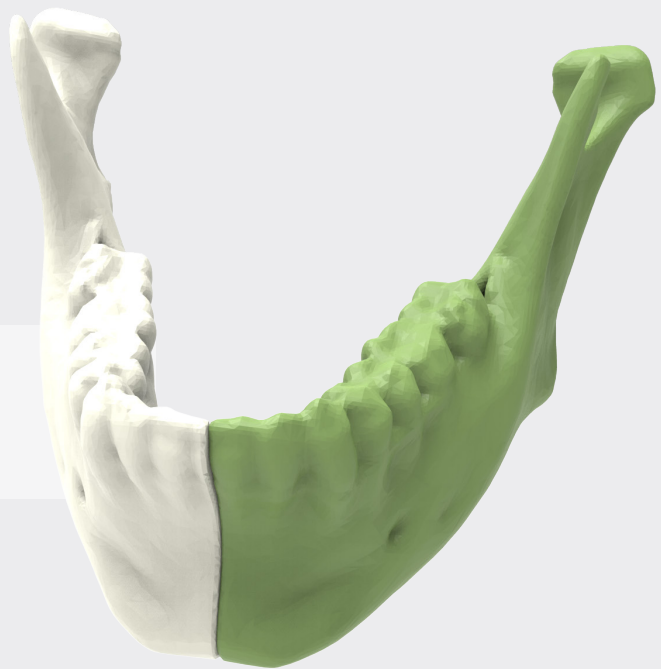
[www.klsmartinnorthamerica.com](http://www.klsmartinnorthamerica.com)



Tumor boundaries are approximated and the resection is set during an IPS Planning session.

Low profile 3D printed resection guides with fixation and predictive screw holes are designed and produced to facilitate in the planned resection.

The unaffected contralateral anatomy is mirrored to the affected side allowing recreation of the patient's most natural, aesthetic appearance.



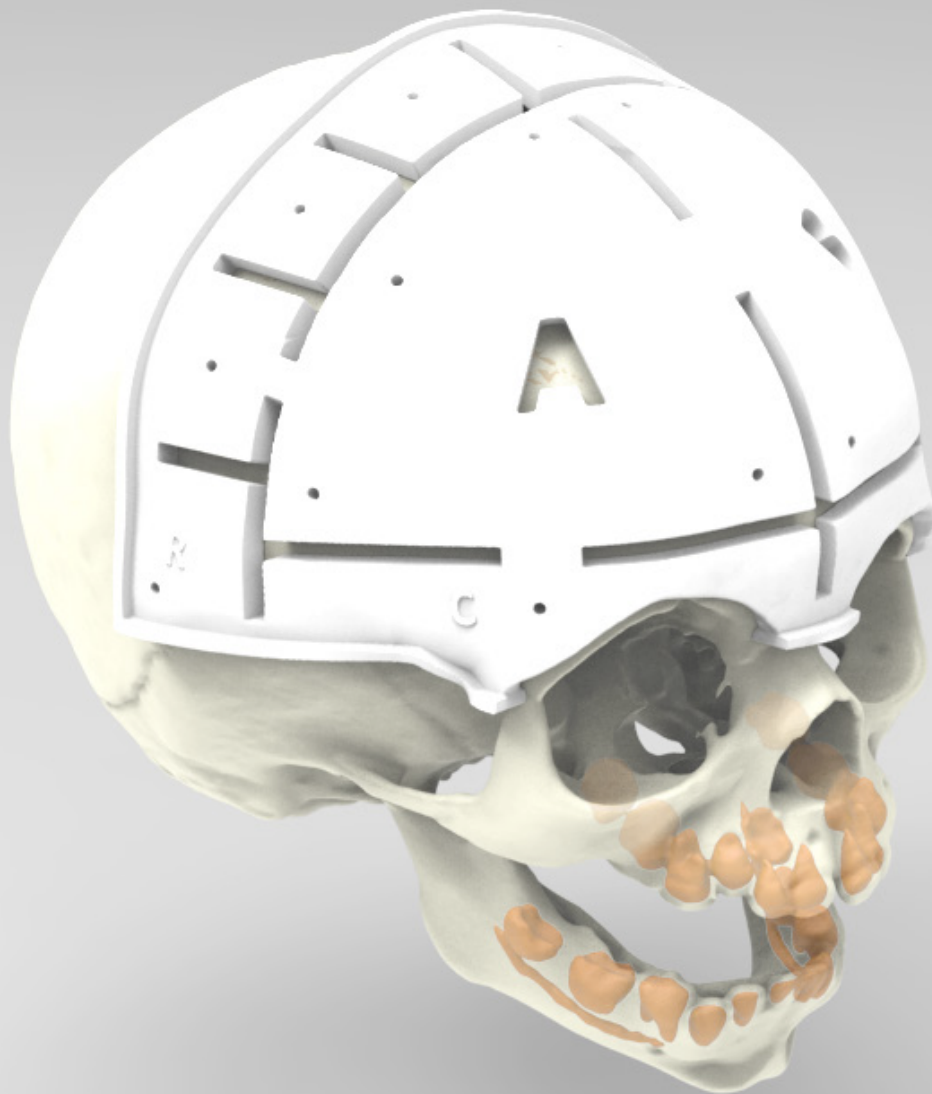
The mirroring allows for anatomic restoration of the mandibular contour using our proprietary SLM technology.

Additionally, a ledge is designed on the lingual aspect of the plate which supports the vertical height of the graft close to the occlusal plane to ease dental implant rehabilitation. This equates to less bone graft harvested when compared to a double-barrel reconstruction and less donor site morbidity.

# IPS<sup>®</sup> Cranial Vault Planning

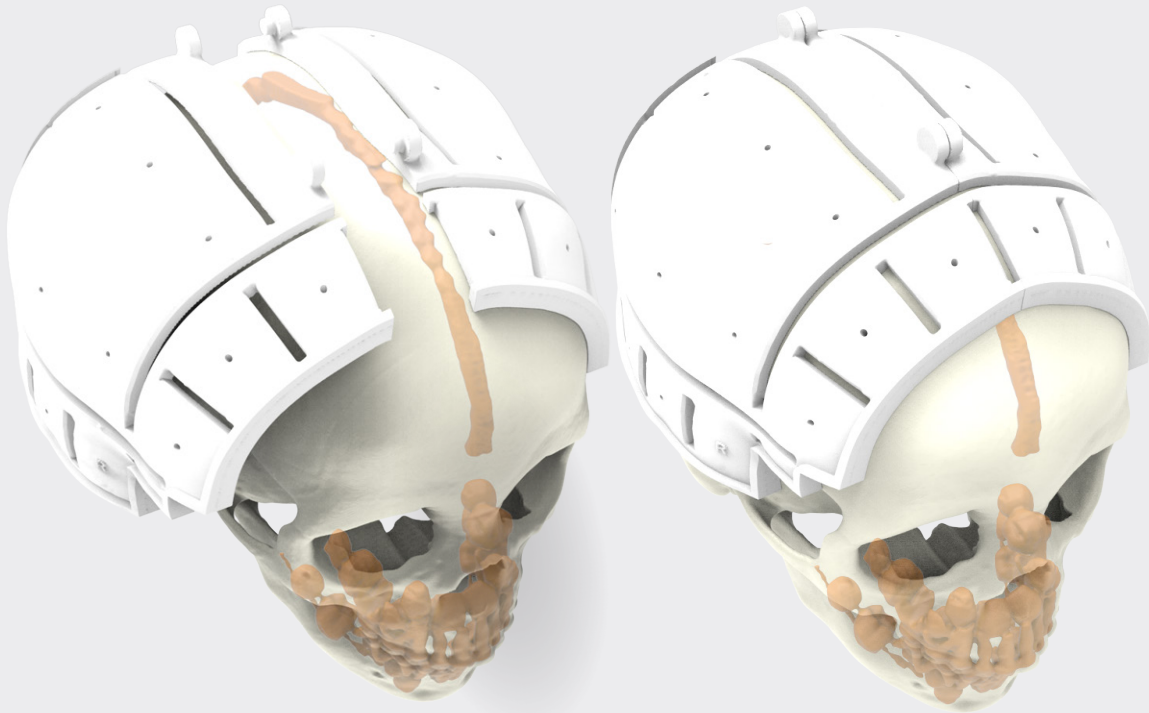
Planning. Design. Production. Case Support.

All one company. **All KLS Martin.**

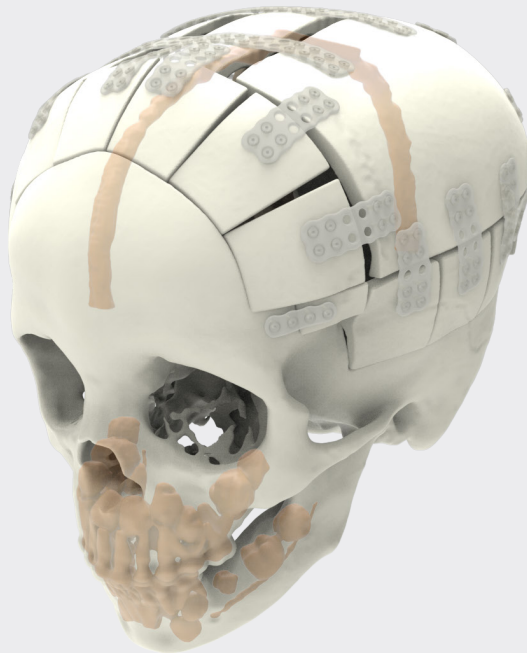


Individual Patient Solutions  
**every one is unique**

[www.klsmartinnorthamerica.com](http://www.klsmartinnorthamerica.com)

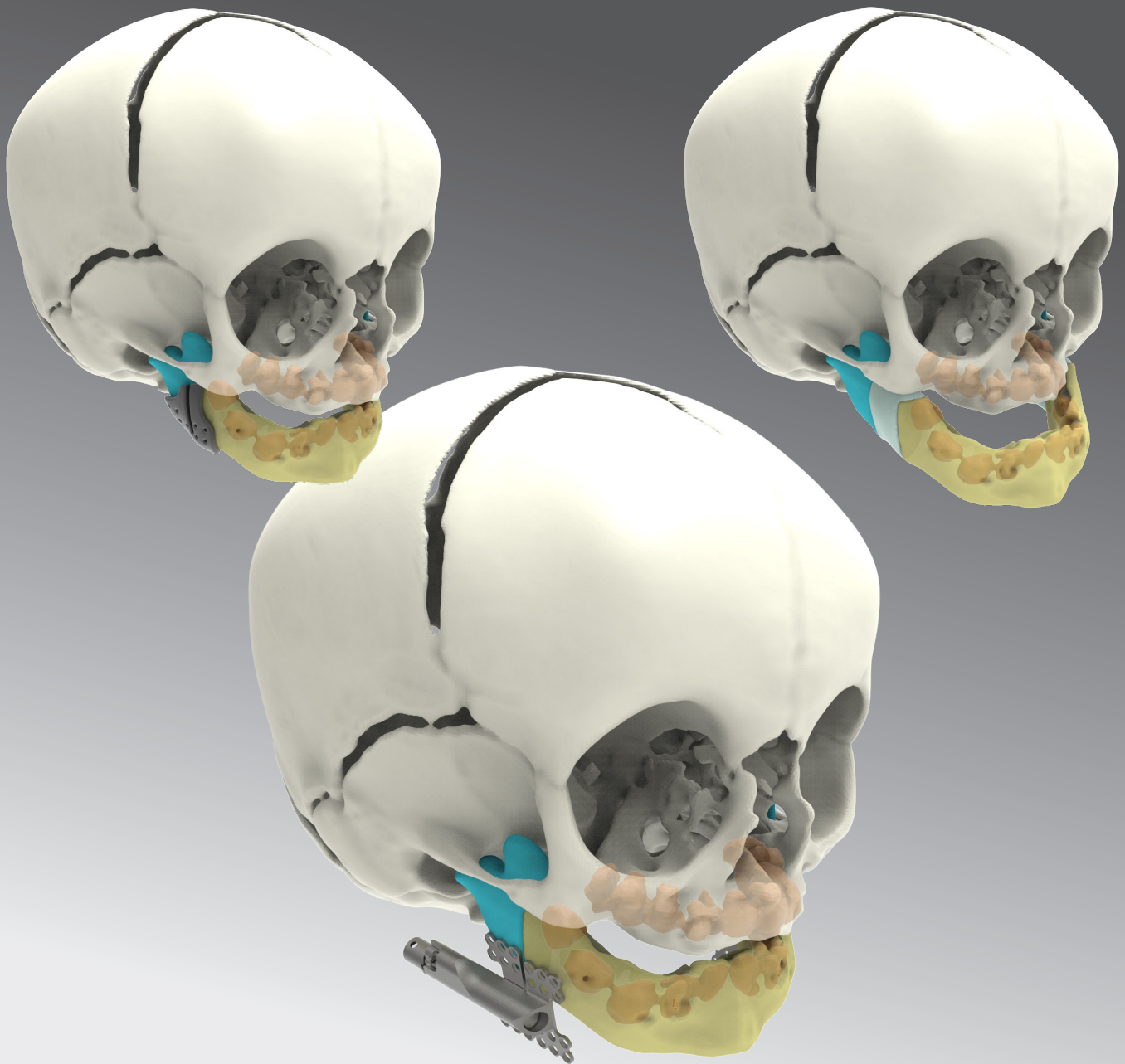


Multi-piece guide constructs are easy to assemble. They also enhance efficiency with guide positioning and aid in reproducibility of planned osteotomies.



Sonicweld Rx™ resorbable plates, screws and pins provide excellent fixation following positioning.

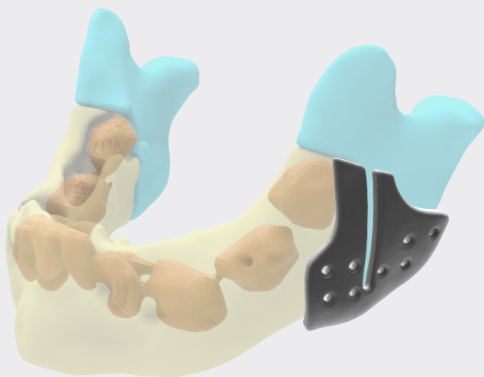
**Plan your next cranial vault remodeling or distraction case with IPS® Cranial Vault Planning**



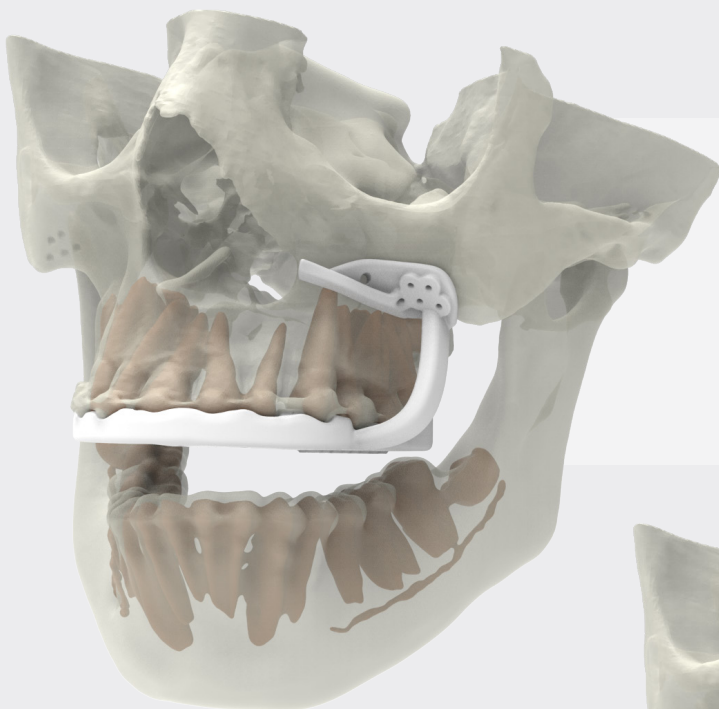
## **IPS**<sup>®</sup> Distraction Planning

Individual Patient Solutions  
**every one is unique**

[www.klsmartinnorthamerica.com](http://www.klsmartinnorthamerica.com)

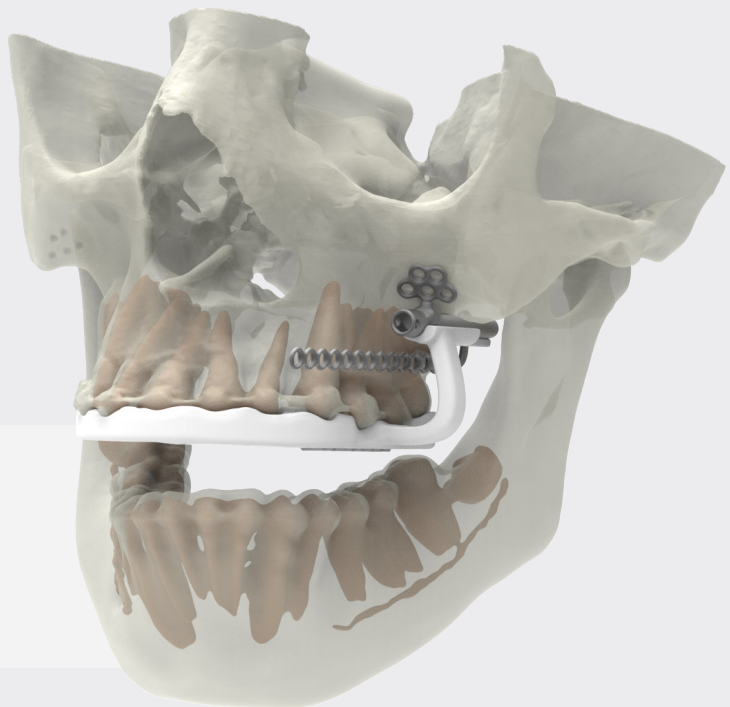


Titanium osteotomy guides shown on the previous page provide a low profile, rigid construct with predictive screw holes built in. They are ideal for neonatal distraction cases.



The full arsenal of KLS Martin's world leading off-the-shelf distractors are available for visualization and placement on the call. In the OR, precise osteotomy marking and predictive screw hole drilling can be executed with the use of occlusal based or bone borne guides. Each guide will be equipped with an elevated marking wall to signify where the osteotomy was planned.

Following the osteotomy a distractor may be applied. Occlusal based vector guides are available to ensure device placement matches the planned vector.





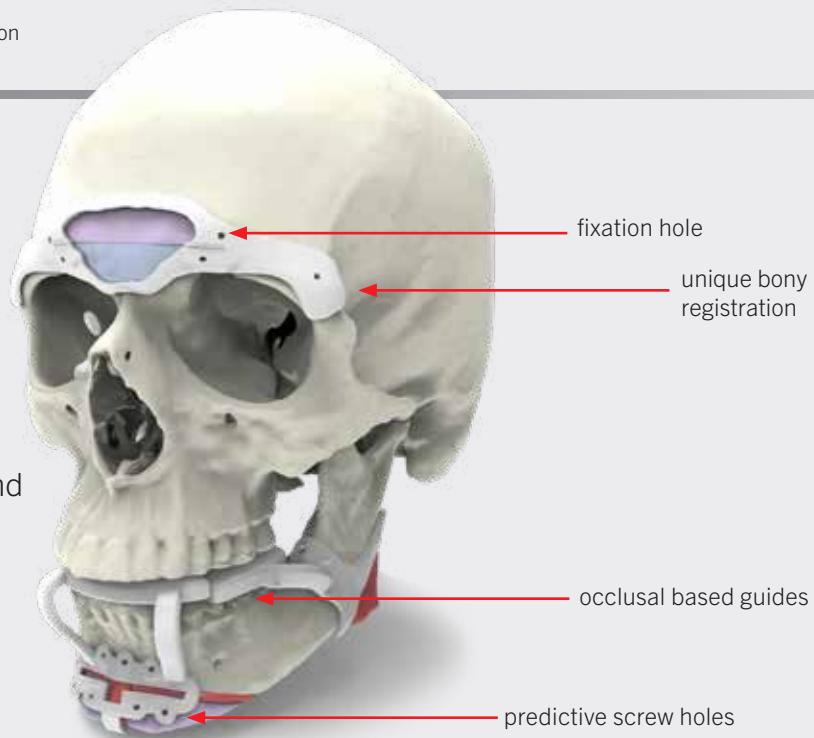
# **IPS** Transformation

Individual Patient Solutions

**every one is unique**

[www.klsmartinnorthamerica.com](http://www.klsmartinnorthamerica.com)

Planning allows for design and manufacturing of Polyamide marking guides to aid in precise resection



After marking has been completed, the planned resections are executed and can be removed



Implants produced for the case are now fixated