

## Oral and Maxillofacial Surgery



### Chrome

cordless headlights



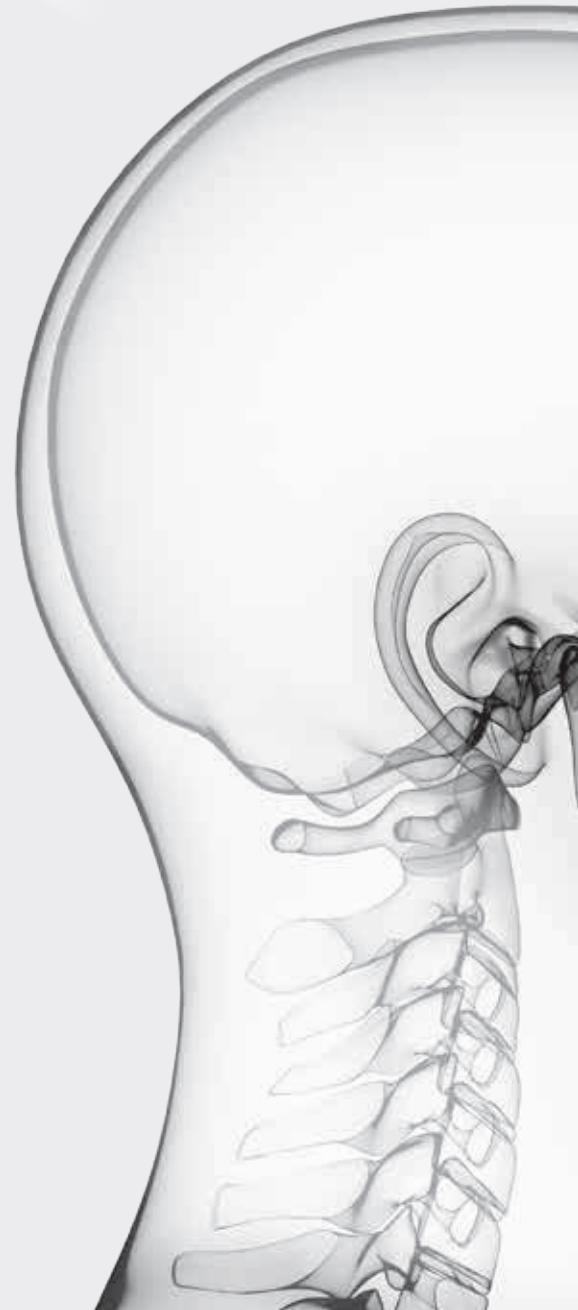
### BienAir

power for exodontia and implantology



### Surgical Instruments

a tradition of quality



## LevelOne

titanium screw osteosynthesis systems



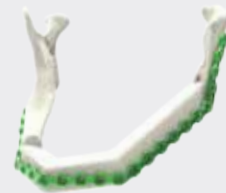
## SonicWeld Rx™

resorbable fixation



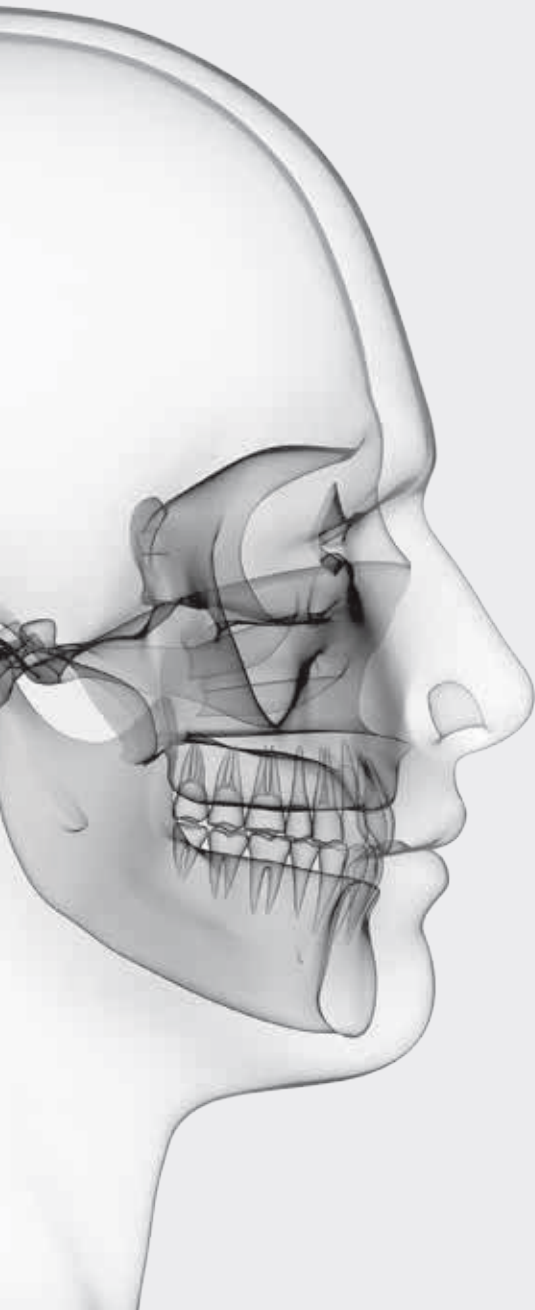
## IPS®

individual solutions for every patient



## Distraction Osteogenesis

control the regeneration of bone



## Oral and Maxillofacial Instruments

Our direct sales consultants cover every geography of North America, and are especially trained in oral and maxillofacial products. We manufacture specialized instruments for oral surgery recognized for their quality by the surgeons that designed them.



- product not to scale unless otherwise noted  
- for additional product information, please refer to *KLS Martin Surgical Instrument Catalog*.

Obwegeser

L. Hugo L. Obwegeser M.D., D.M.D.  
Prof. em., DDr. h.c., F.D.S.R.C.S. (Engl.)  
Hon. F.D.S.R.C.P.S. (Glas.), hon. F.F.D.R.C.S. (Irel.)  
CH-8603 Schwerzenbach, Im Zelg  
Switzerland  
Tel./Fax: +41-1-825 3293 / -1-887 1835

18. Nov. 2003

*To KLS-Martin Company  
Jacksonville FL*

Letter of Recommendation

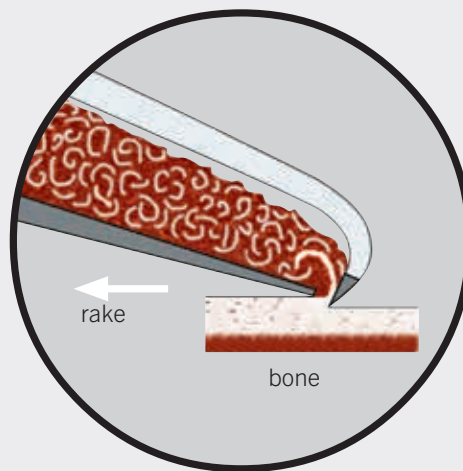
Craniomaxillofacial Surgery is not an easy surgical speciality. It's main goal is the correction and reconstruction of facial skeletal anomalies without producing visible scars. The surgeon must be able to produce his ideas. But often enough the necessary instruments are not existing. That means he wants specific instruments according to his need. He can hardly alter existing ones or even develop new ones by himself. Therefore he has to contact an instrument maker. In my experience, very few really good companies quickly grasp the concept and details of what is requested and produce a quality product. KLS-Martin is such a company.

To ensure quality and strict adherence to original specifications, it is essential that the surgeon checks at intervals all those instruments which are sold under his name. KLS-Martin in Jacksonville, FL is now the only instrument distributing company in the USA which sells my instruments checked by me for their quality. In the USA, they alone hold the right to put my name on their products. These instruments are worthy of the name Obwegeser.

Hugo Obwegeser

*Hugo Obwegeser*

## MX Grafter®



- Disposable (pre-sterilized)
- Rapidly harvest 2 - 8 cc of autogenous bone
- Cuts, collects, and delivers

## Ebner™ 502



- Reusable high-strength stainless steel handle
- Three head angles
- Sharp, hollow ground, autoclavable blade
- Low cost per case; replace only the blades



## BienAir Power

The requirements for the oral surgeon are clear; incredible power and reliability for easy surgical extractions and a smart and capable system for the modern implantologist.

The hard working Chiropro L Premium system is ideal for rapid setup and simple operation.

**Chiropro L**  
increase your expectations





The smart iChiropro system is a continuously updated platform. It not only updates implant system settings and software via wifi, it can provide bone quality detection via implant torque resistance and record implant inventory placed in each patient.

**iChiropro**  
the smart way to success



## MedLED Chrome®

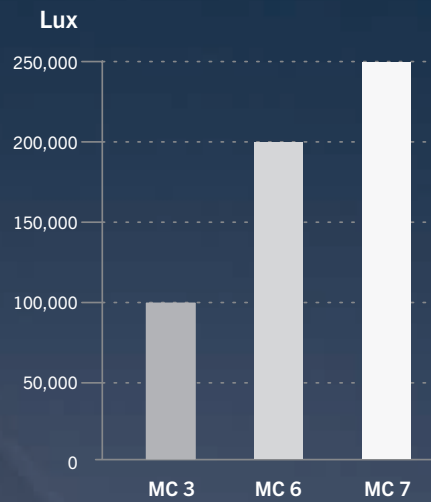
### Freedom without sacrifice

If you have a need for a powerful, long lasting, comfortable headlight with no cord, KLS Martin® has you covered with a full range of headlamps and accessories.



- product not to scale unless otherwise noted  
- for additional product information, please refer to brochure *medLED Chrome®*.

## Power and Brightness



## Spot Adjustability and Control

200 mm  
**MC 7**

maximum spot diameter range  
1:1 scale

100 mm  
**MC 6**

90 mm  
**MC 3**

## LevelOne

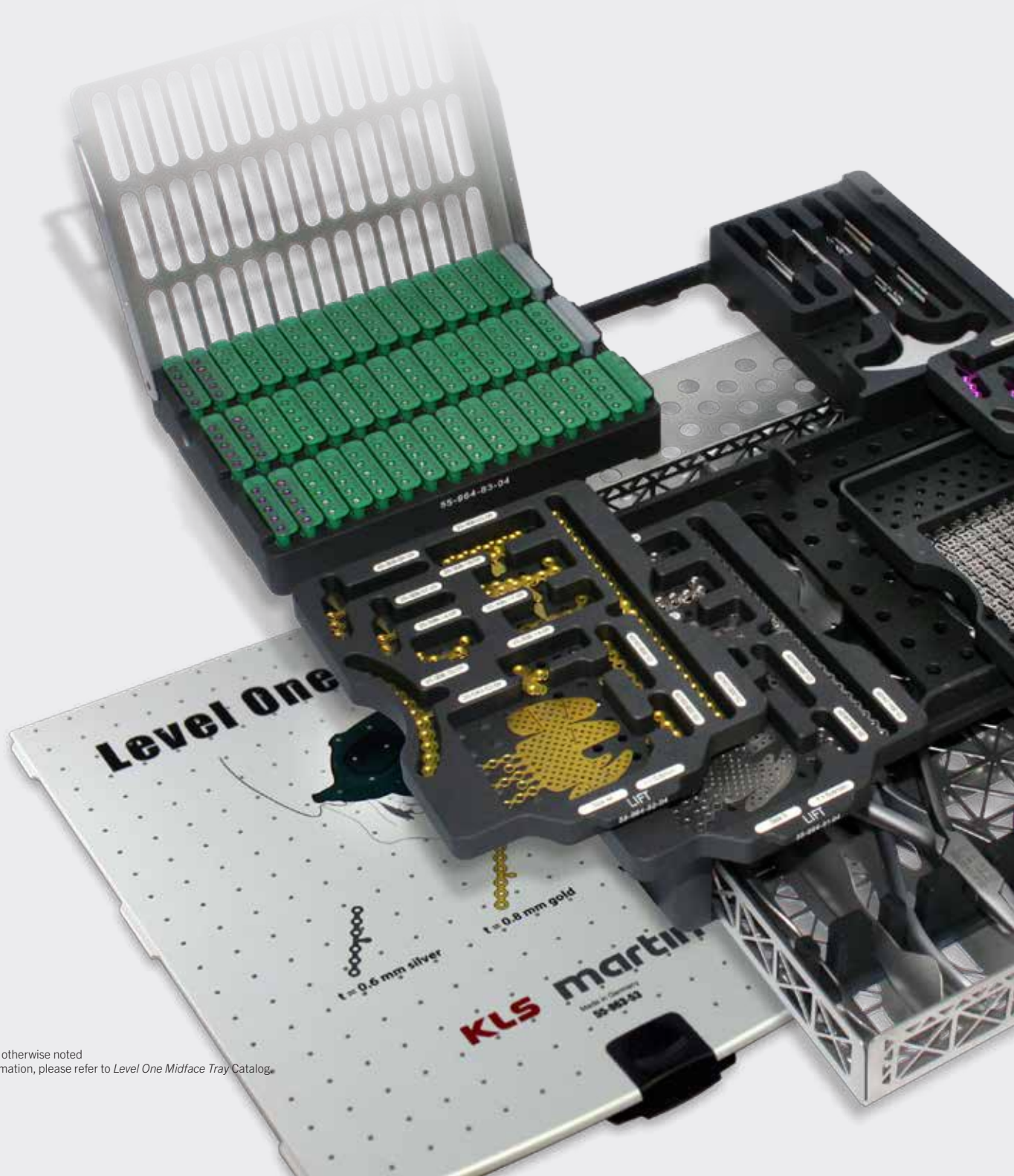
The Level One fixation system has a comprehensive selection of plates and mesh. The organized, color-coded system aids in selection and inventory management. Newly designed instrumentation along with comfortable, proven designs allow you to shape and place implants easily.



- product not to scale unless otherwise noted  
- for additional product information, please refer to *Level One Fixation* catalogs.







- product not to scale unless otherwise noted
- for additional product information, please refer to *Level One Midface Tray Catalog*.





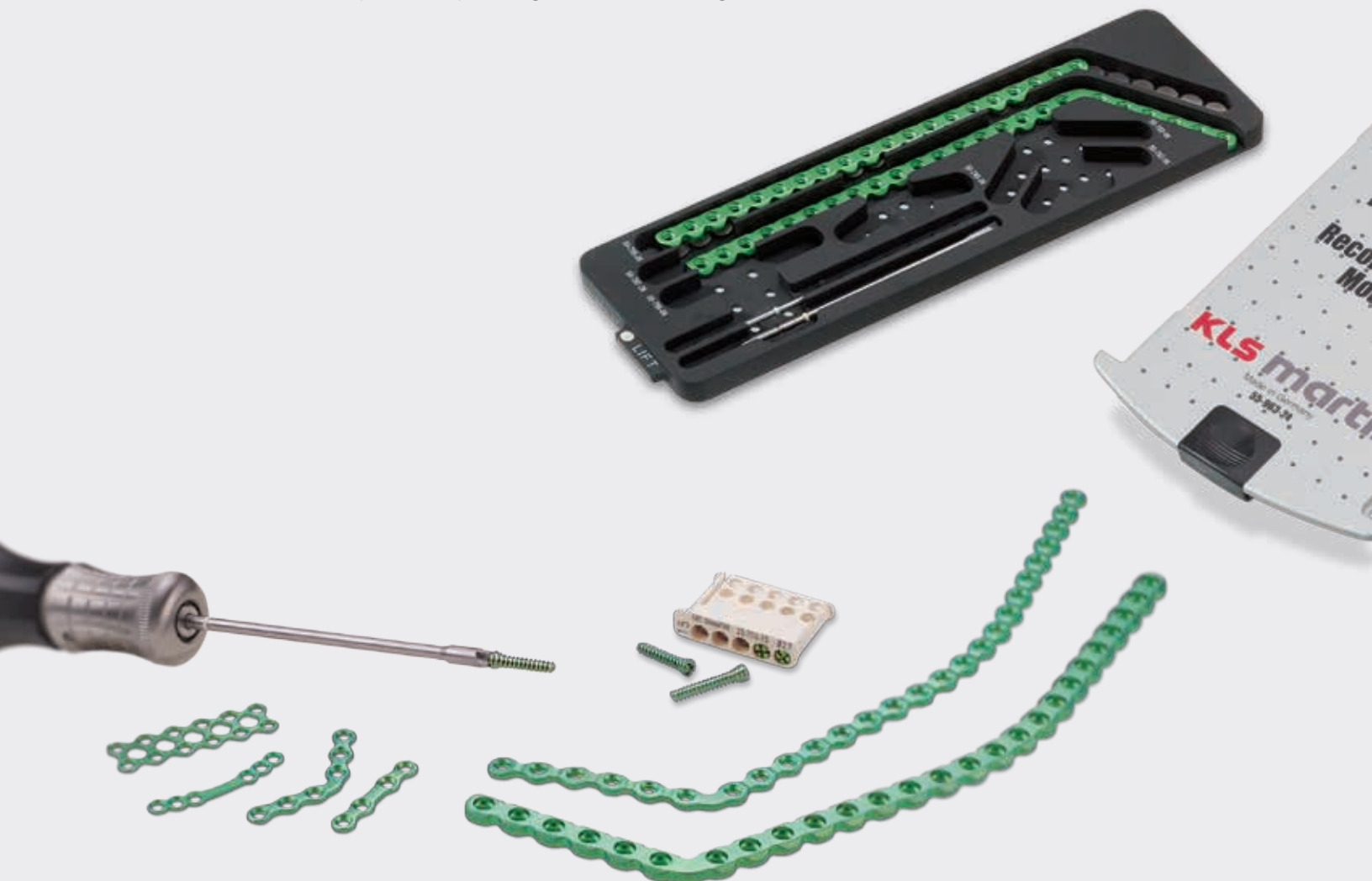
## ThreadLock TS™

Mandibular osteosynthesis requires a design that embodies the necessary strength without sacrificing user interface and ease of use.

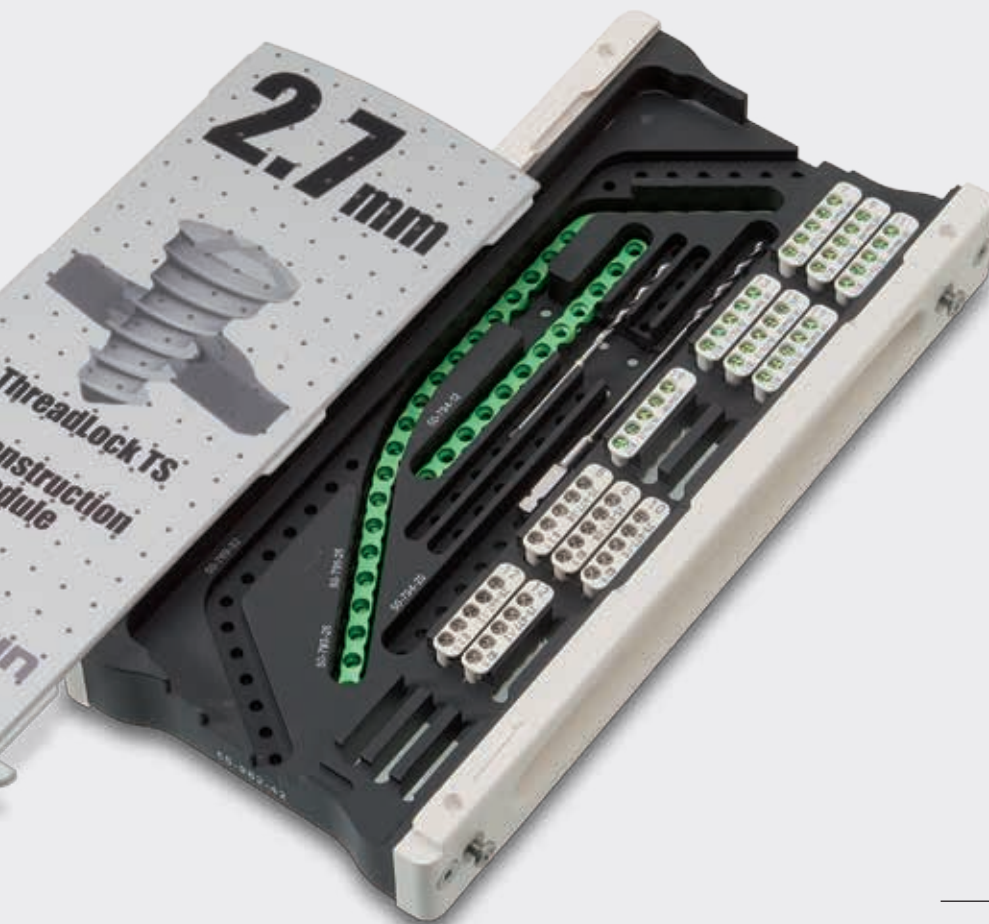
The ThreadLock TS™ system features an industry leading Taper Screw design that allows for insertion angles of twenty degrees. The tactile feel of the bone is delivered to the user until the very final moment.

The instrumentation selection is a blend of both innovative and familiar patterns focused on efficient cutting, precise bending and rapid screw delivery.

- Screws lock into plates with up to 20° of angulation in each direction
- All locking plates and screws are colored green
- All plates accept locking as well as non-locking screws



- product not to scale unless otherwise noted  
- for additional product information, please refer to Level One Fixation Catalogs *ThreadLock TS™ maxDrive®* and *Cross-Drive*.



3:1

t = 1.0 mm

Mini plates



t = 1.5 mm

Fracture plates



t = 2.0 mm

Fracture and low profile  
reconstruction plates



t = 2.5 mm

Reconstruction plates



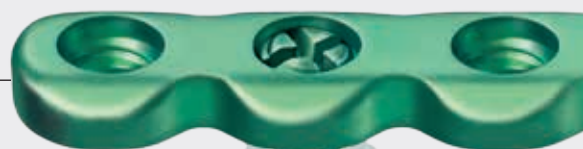
t = 2.8 mm

Reconstruction plates



t = 3.0 mm

Fracture and bridging  
reconstruction plates



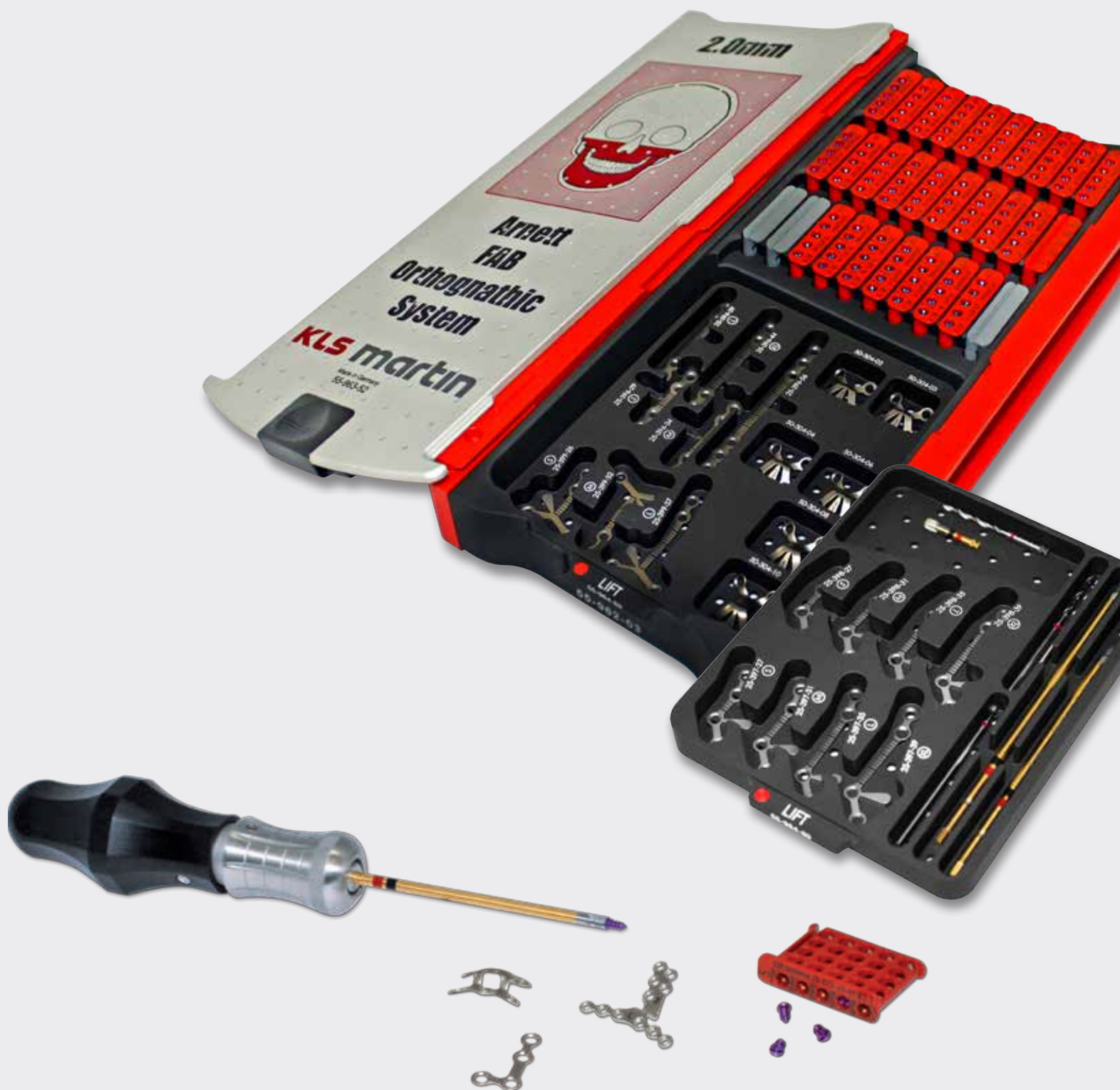
## LevelOne Orthognathic

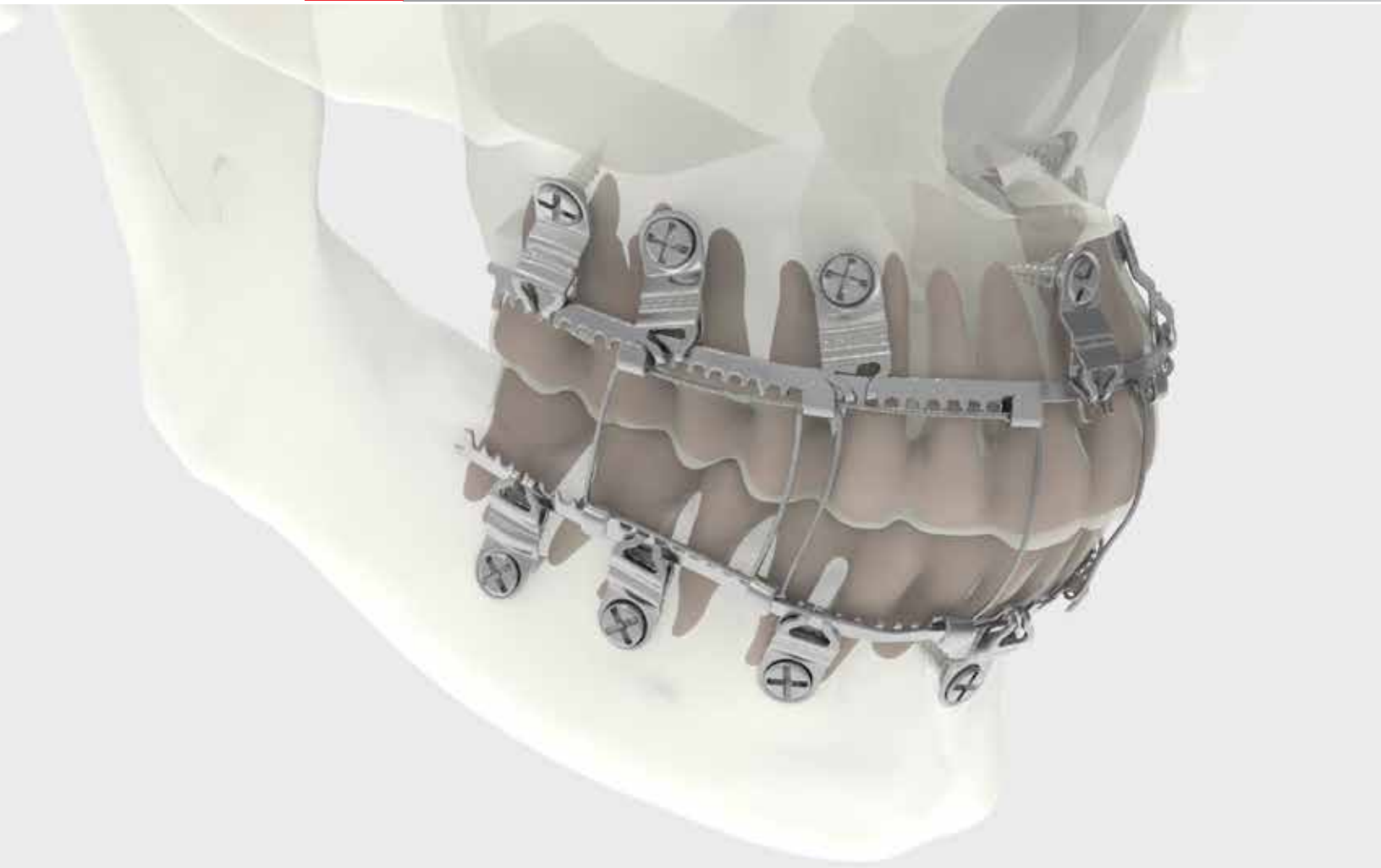
For decades, KLS Martin® has been the partner of choice for the world's experts, developing both innovative instruments and implant designs.



- product not to scale unless otherwise noted  
- for additional product information, please refer to the Level One Fixation catalog *Orthognathic Fixation Products*.







## L1 MMF

Because every tooth root matters.

The KLS Martin® L1 MMF allows you to work around the tooth roots without compromising strength.

## USR

Craniomaxillofacial rigid fixation systems are available from a variety of manufacturers. The Universal Screw Removal system is a complete screwdriver array that allows the easy removal of virtually any craniomaxillofacial screw.



- product not to scale unless otherwise noted  
- for additional product information, please refer to brochure *Universal Screw Removal*.

## LevelOne Office Fixation Kit

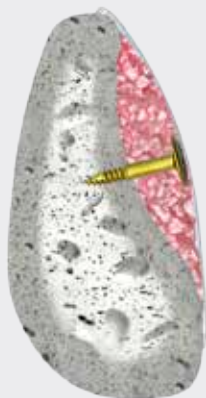
An oral surgery practice needs a simple fixation kit that can handle a variety of tasks. The Level One Office Fixation Kit perfectly fulfills that demand because it is adaptable and can incorporate a wide selection of implants.

Build your own kit with the following options:

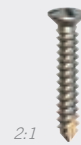
- tenting and mesh for particulate grafting
- drill-free bone block screws
- alveolar distractors
- orthodontic anchorage plates and screws
- MMF screws
- simple fracture osteosynthesis implants



Tenting/bone grafting  
screws



Bone grafting  
screws



Fixation  
screws







## OrthoAnchor™

The passion to find a better way is crucial to a great industry partner. At KLS Martin®, we are driven to make the best possible devices so patients and practitioners have a reason to smile.

The **OrthoAnchor™** System does just that.

- Absolute anchorage with immediate loading
- Better, faster results without headgear



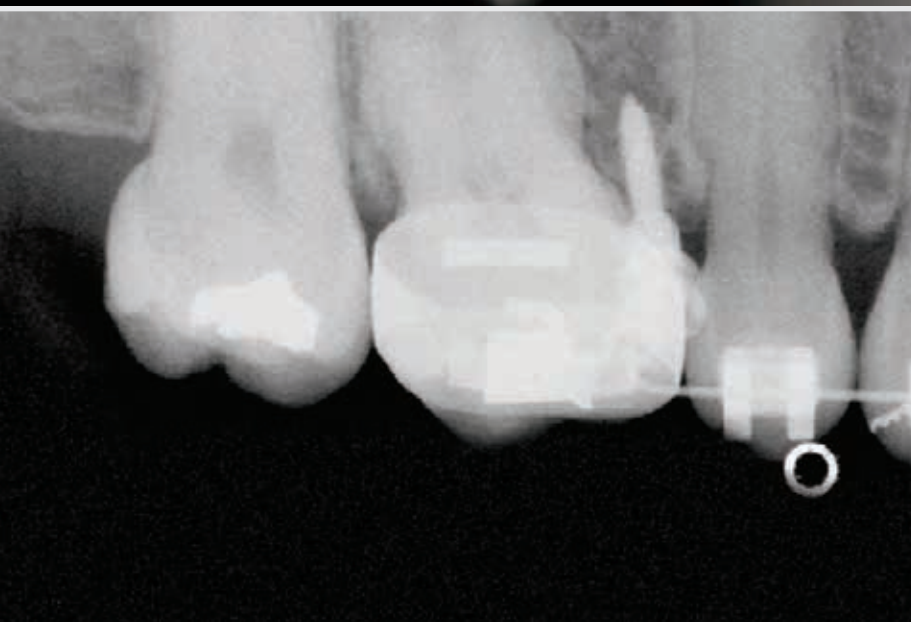
OrthoAnchor™ screws



Drill-Free® screws



C-tube plates





## SonicWeld Rx™

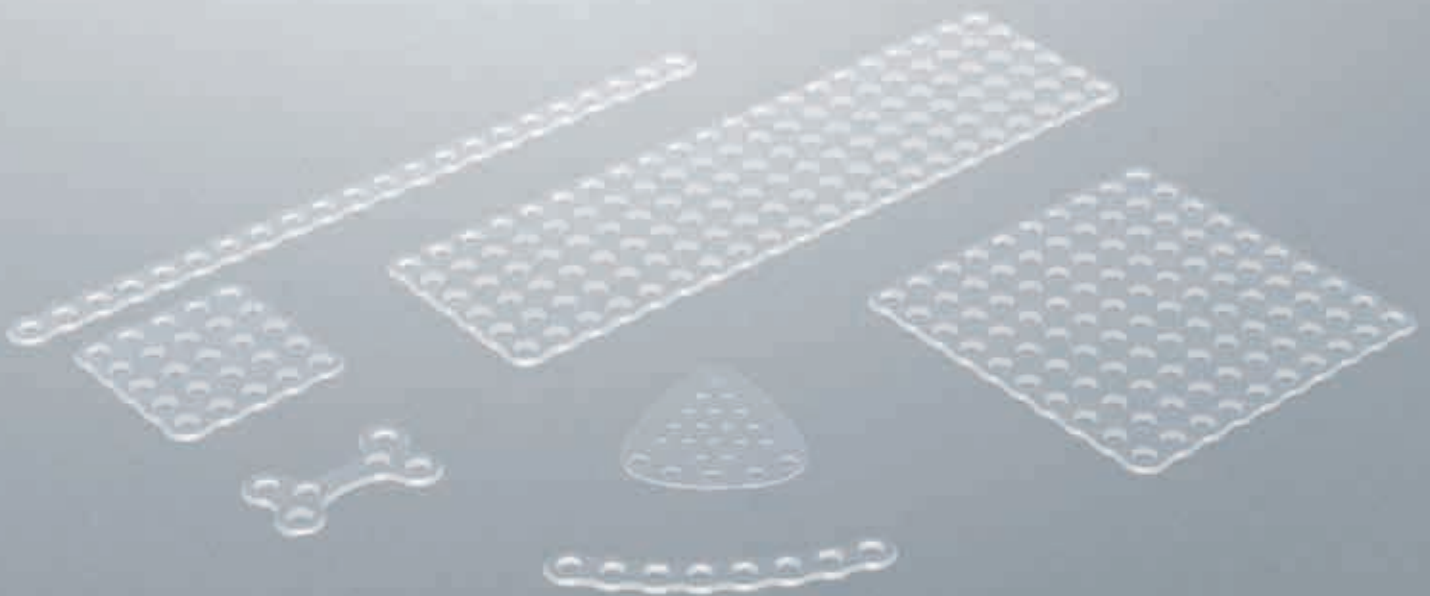
Proven clinically in midface trauma, browlift suture anchoring, LeFort One osteotomies, and bone augmentation surgery, SonicWeld Rx™ offers a resorbable solution without compromise.



SonicWeld Rx™ II unit

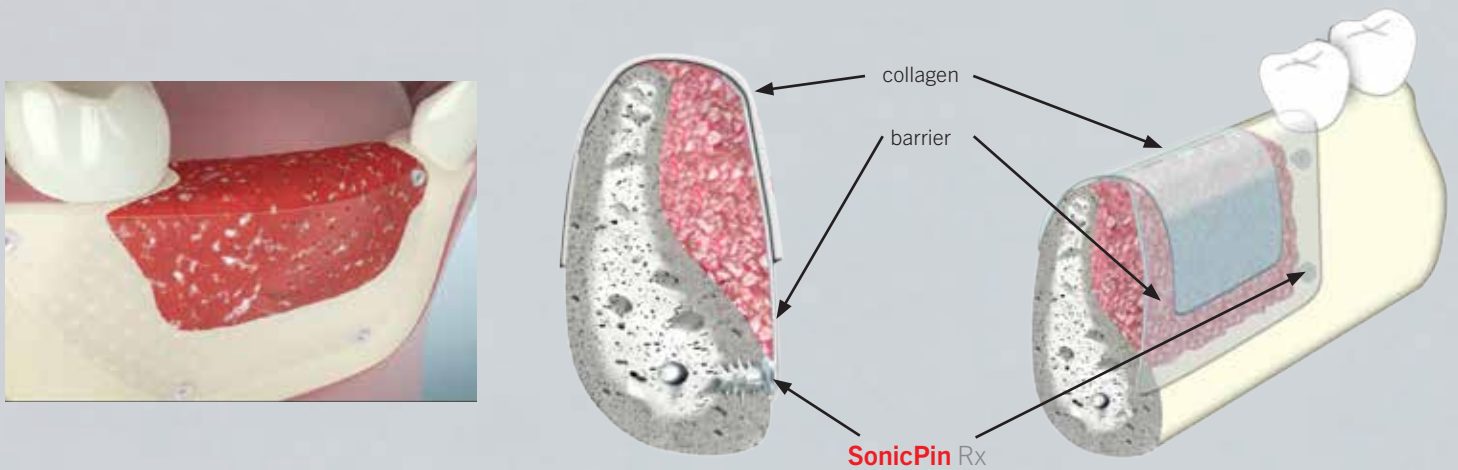


- product not to scale unless otherwise noted  
- for additional product information, please refer to any SonicWeld Rx™ literature.



## SonicWeld Rx™

SonicWeld Rx™ has changed the surgical options for space maintenance in particulate bone augmentation. No longer is it necessary to retrieve mesh or rely on cortical bone for fixation quality.







**Xcelcior** complete

component tray  
miniset tray



dental attachments

wrench for sonotrodes

sonotrodes



**SonicPins Rx**

**Resorb x®**





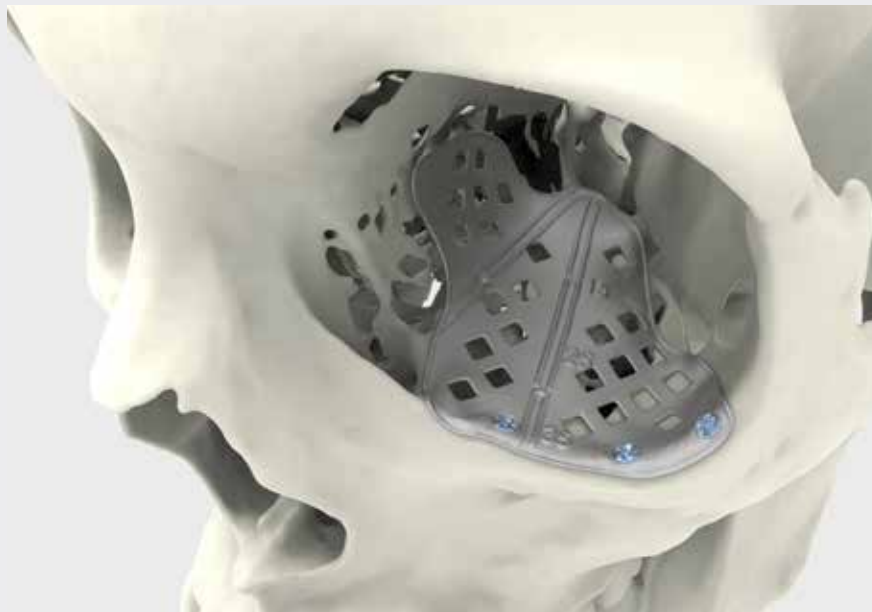
## IPS

### every one is unique

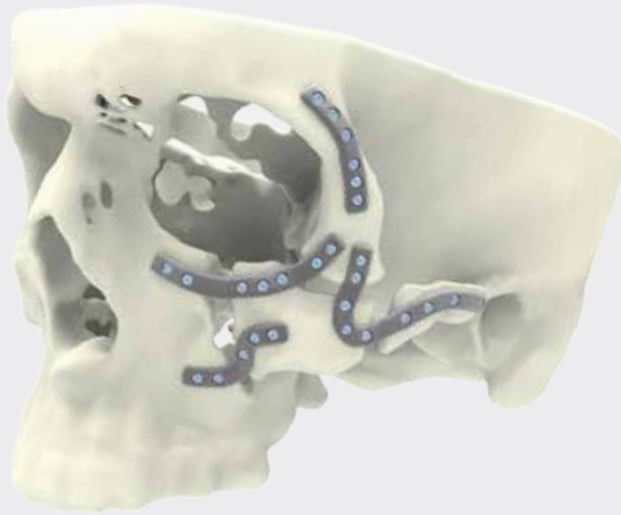
The ideal solution for reconstruction of bony defects is one that is absolutely symmetrical and functional for each individual patient. With the readily available and cost effective CT scanning technology in hospitals, KLS Martin® can manufacture an IPS (Individual Patient Solution) implant with CT data.

Highly advanced materials are available for your implant, each with specific properties that make it particularly suitable for specific fields of use. Our large range of sophisticated manufacturing facilities enable us to meet any challenge. Additive Manufacturing (AM), a form of metal 3D printing, has made possible the manufacture of intricate patterns and shapes that were difficult or impossible with previous technologies.

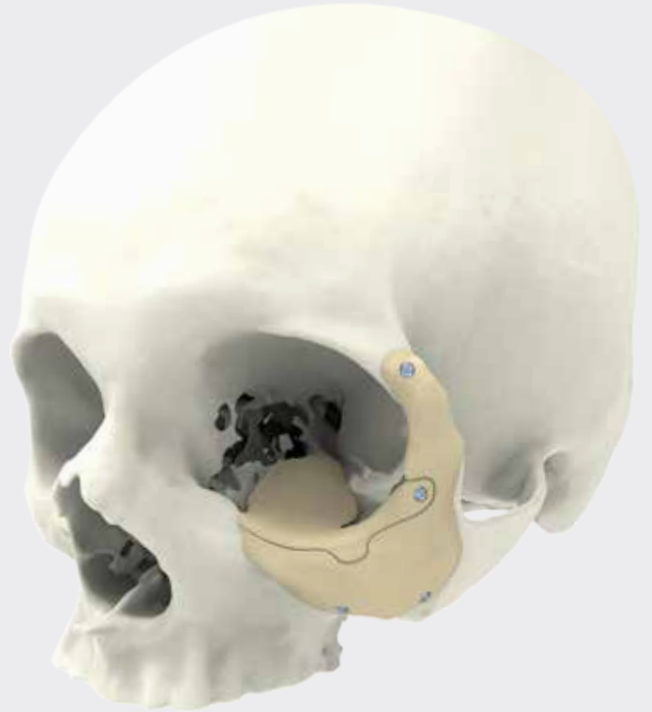
Reconstruction no longer requires hand bending malleable or flat meshes. With Individual Patient Solutions, the precision of the reconstruction is predictable and satisfying for both doctor and patient.



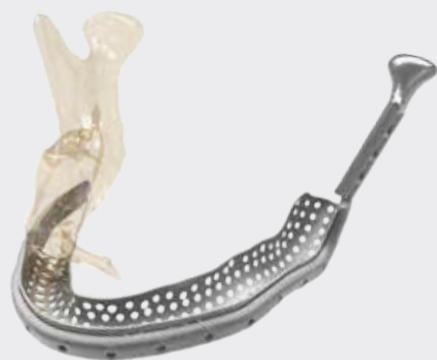
**IPS** Titanium Alloy



**IPS** PEEK



**IPS** Titanium Alloy

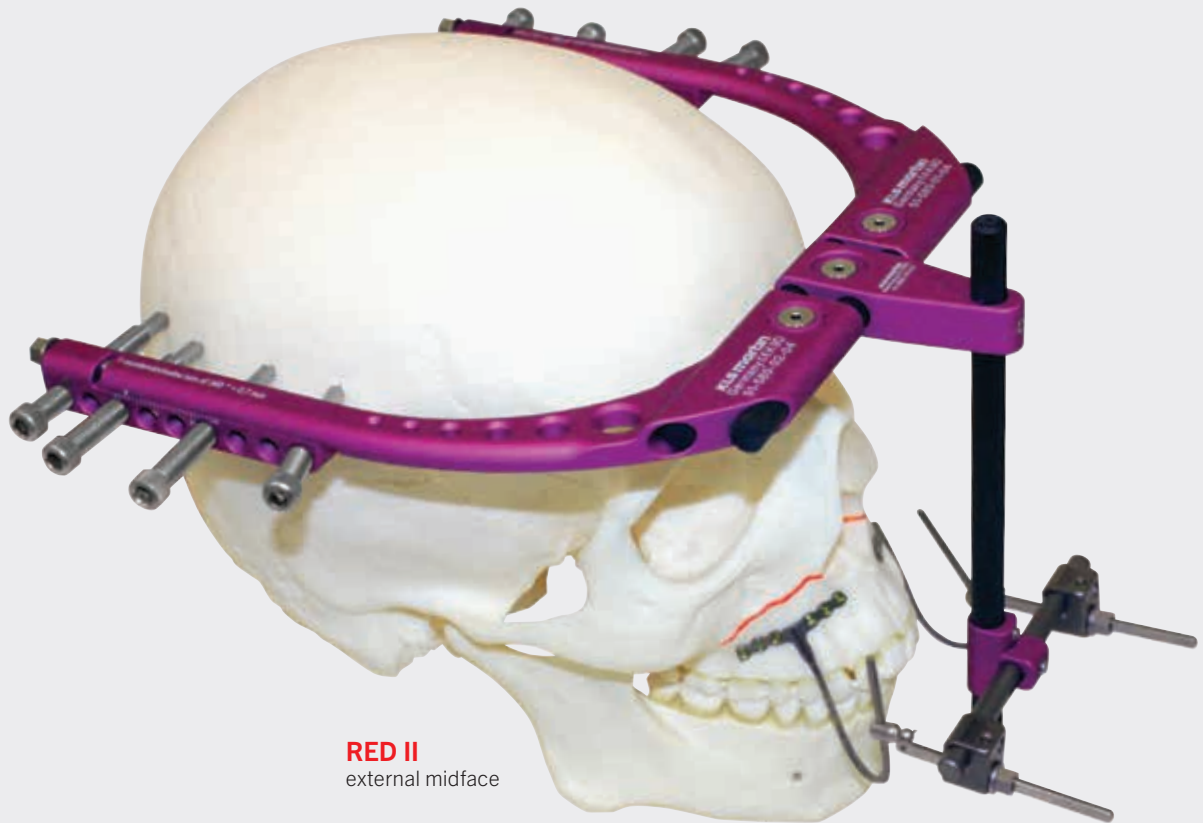


**IPS** CP Titanium



## Distraction Osteogenesis

When we began developing the RED for rigid external midface distraction in the 1990's, our strong relationship with oral & maxillofacial surgeons and emphasis on innovation fostered an era of distraction device creation that changed patient care. This relationship continues today and into the future as we work directly with oral & maxillofacial surgeons around the world to increase the ability to solve complex anatomical problems. If you have a need for distraction, please have our local consultant show you our full range of solutions for your specific case.



KLS Martin® is dedicated to developing innovative surgical products. We are proud to be the leader in the field of distraction osteogenesis. KLS Martin® offers a wide variety of both internal and external distractors for use on the mandible and midface.

**TrackPlus**  
vertical alveolar



**HyperDrive**  
mandible

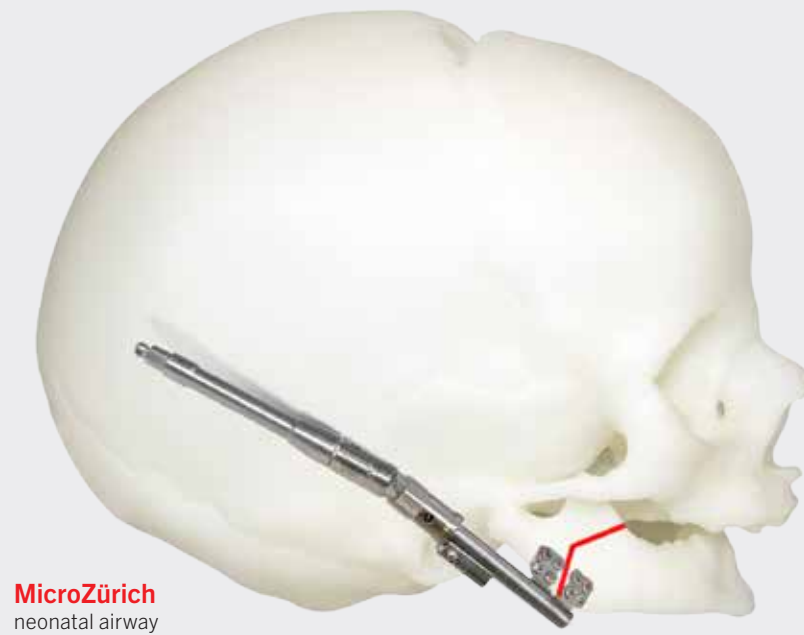


**RPE**  
palatal widening



**Zürich**  
maxillary LeFort I





**MicroZürich**  
neonatal airway

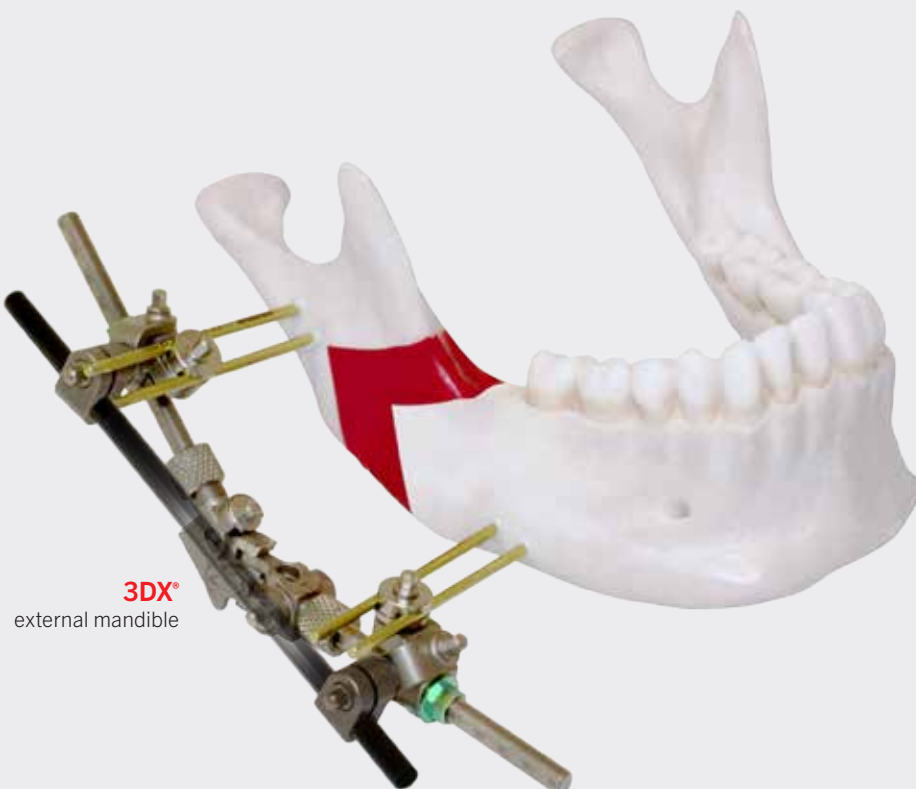


**Zürich**  
maxillary telescoping  
2.0 mm screws

**Zürich**  
maxillary telescoping  
1.5 mm screws

**Zürich**3D Internal  
Williams mandible

**Zürich**NYU  
internal mandible



**3DX**  
external mandible

## KLS Martin Group

### **KLS Martin Australia Pty Ltd.**

Sydney · Australia  
Tel. +61 2 9439 5316  
australia@klsmartin.com

### **KLS Martin do Brasil Ltda.**

São Paulo · Brazil  
Tel. +55 11 3554 2299  
brazil@klsmartin.com

### **Gebrüder Martin GmbH & Co. KG**

Shanghai · China  
Tel. +86 21 5820 6251  
china@klsmartin.com

### **KLS Martin France SARL**

Mulhouse · France  
Tel. +33 3 8951 3150  
france@klsmartin.com

### **Gebrüder Martin GmbH & Co. KG**

78532 Tuttlingen · Germany  
Tel. +49 7461 706-0  
info@klsmartin.com

### **KLS Martin India Pvt Ltd.**

Chennai · India  
Tel. +91 44 66 442 300  
india@klsmartin.com

### **Martin Italia S.r.l.**

Milan · Italy  
Tel. +39 039 605 67 31  
italia@klsmartin.com

### **Nippon Martin K.K.**

Tokyo · Japan  
Tel. +81 3 3814 1431  
nippon@klsmartin.com

### **KLS Martin SE Asia Sdn. Bhd.**

Penang · Malaysia  
Tel. +604 505 7838  
malaysia@klsmartin.com

### **Martin Nederland/Marned B.V.**

Huizen · The Netherlands  
Tel. +31 35 523 45 38  
nederland@klsmartin.com

### **Gebrüder Martin GmbH & Co. KG**

Moscow · Russia  
Tel. +7 499 792-76-19  
russia@klsmartin.com

### **Gebrüder Martin GmbH & Co. KG**

Dubai · United Arab Emirates  
Tel. +971 4 454 16 55  
middleeast@klsmartin.com

### **KLS Martin UK Ltd.**

London · United Kingdom  
Tel. +44 1189 000 570  
uk@klsmartin.com

## **KLS Martin LP**

### **A company of the KLS Martin Group**

Mail: P.O. Box 16369  
Jacksonville, FL 32245-6369  
Office: 11201 Saint Johns Industrial Pkwy S.  
Jacksonville, FL 32246-7652  
Tel. 904.641.7746 · 800.625.1557  
Fax 904.641.7378 · www.klsmartinnorthamerica.com