



BAUER CONNECT[®]

IOT SOLUTIONS FOR FIREFIGHTERS

HYDROTEST DATE:
01-25-18

FINAL PRESSURE:
4500 psi

CYLINDER SERIAL NO:
234517- 44

FILL DATE:
10-30-19

FILLED BY:
Lt. J.Smith

CONNECTION THAT MATTERS

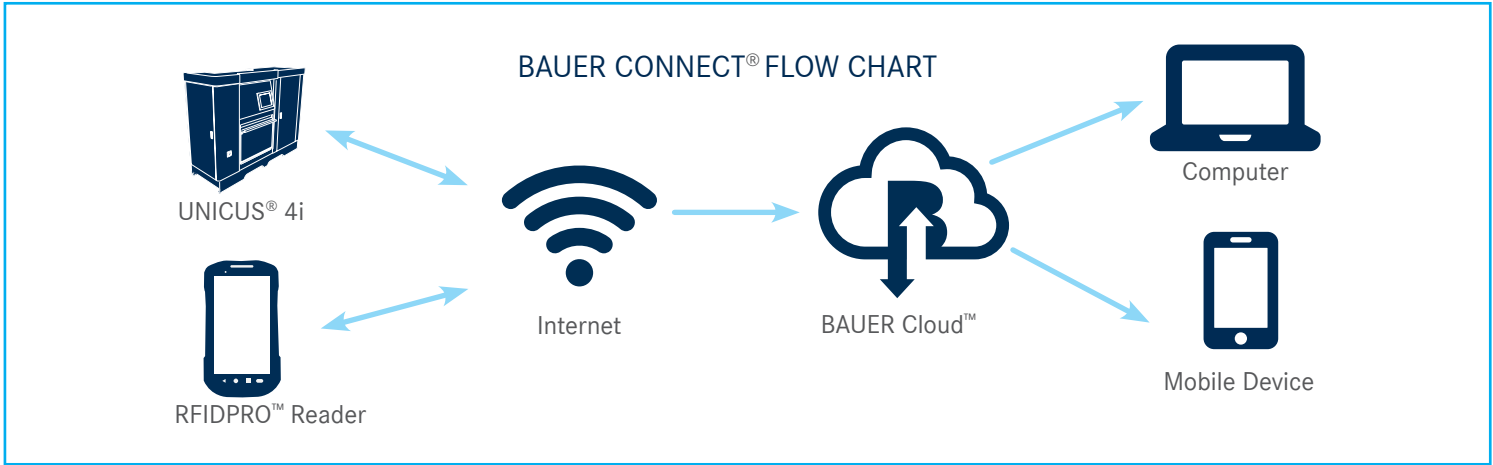


BAUER CONNECT® REMOTE TELEMETRY AND CONTROL VIA MOBILE APP

In today's age of technology, the saying "time is money" is often heard. Within the firefighting industry, time could mean someone's life. With your job, time is a resource that is often not addressed. What can be done to save you time, give you peace of mind and allow you more time to do what matters most? Introducing BAUER CONNECT®- IoT Solutions for Firefighting — our all-in-one, mobile telemetry solution for optimal ease-of-use and efficiency. For the first time, you can view your SCBA fill data logs, get notifications about your compressor and see and or control your BAUER compressor all under one app. The best part about BAUER CONNECT® is its ability to be tailored to fit your station's needs.

- Security Features:**
- › Multiple logical & physical security layers
 - › Privilege and separation rights
 - › AI/ML threat assessment & analysis
 - › Transport layer encryption and encryption at rest
 - › Extensive logging and monitoring of network, system and application events

BAUER CONNECT®— Connection that matters.



Available on



To sign up and register go to Signup.Bauer-Connect.com

BAUER CONNECT® FUNCTIONS OVERVIEW



BAUER REPORTS™

BAUER Reports™ is a function that generates custom reports tailored to the specific needs of the customer.

SCBA Management Report

- › Generate a report per NFPA 1989 data logging requirements
- › Show when your cylinders were last filled and by who etc.
- › Fill Status Warning: Lists the SCBA cylinders in inventory that have not been filled within the year
- › Fill activity: Lists the SCBA cylinders serial number, Person filling, RFID serial, cylinder pressure and dates of fill
- › Personnel: List or edit admin, users with privilege to log in to BAUER CONNECT®



Compressor Reports

- › Temperature Trendline Report: Reports ambient temperature as well as temperature of every stage in the compressor



BAUER REMOTE HMI™

- › Live connect and remotely control any BAUER compressor(s) in your station
- › Secure log-ins - Only approved team members can access and control your compressor system
- › Saves time and money with instant control no matter your location



MOBILE DASHBOARDS

- › Quick reference of all of your BAUER compressors at your fingertips
- › Does not require password validation every time app is used
- › Total visual without the Remote HMI control capability (view-only option)
- › Dashboards can be customized to specific customer needs



NOTIFICATIONS

- › Fault on machine
- › Out of Date or Expired SCBA or SCUBA Cylinders
- › Text, email or push notification alarm(s)
- › Allows for instant, proactive steps to be taken if needed



BAUER PREDICTIVE ANALYTICS™

The BAUER Predictive Analytics™ capability provides a new proactive dimension to perpetually maintaining customers' compressor systems at peak conditions with minimum downtime. BAUER's Predictive Analytics algorithm uses artificial intelligence to analyze the collected breathing air system information on the BAUER Cloud™ to predict upcoming maintenance requirements and preventive actions to avoid unplanned shutdowns.



Key Features:

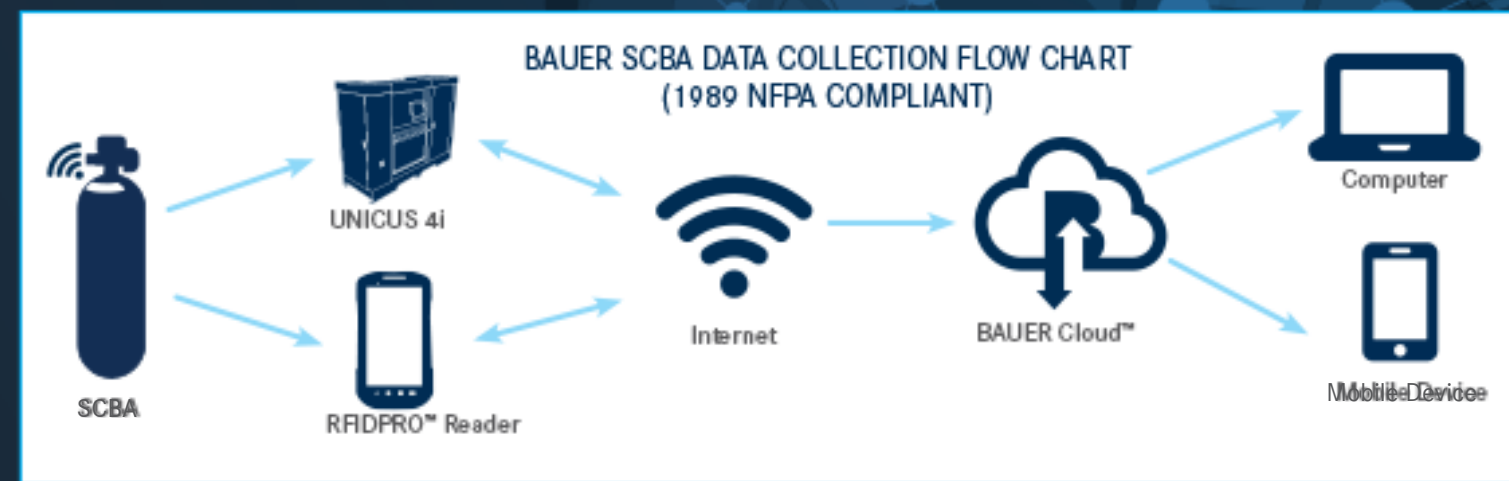


Compressor Features



BAUER Cloud™ RFID Features

RFID CAPABILITY & CONVENIENCE IN 2 DIFFERENT PLATFORMS



BAUER RFIDPRO™ SCBA HANDHELD DATA LOGGING DEVICE

For over 70 years, BAUER has been the leader in high-pressure breathing air solutions for firefighting. When there is an opportunity to not only save time but create an even safer environment for your station we take that very seriously. Introducing our new RFIDPRO™ system from BAUER for scanning and recording SCBA data.

The Reader system comes in two options, in a handheld device no larger than a smartphone and an app-based format for mobile download. BAUER RFIDPRO™ Reader is a customer-friendly and convenient option for scanning and logging your SCBA filling events per NFPA 1989. No matter what type of SCBA you own, the RFIDPRO™ Reader will scan and record any RFID tag. Don't have RFID tags on your SCBAs currently? We can provide any tag for any cylinder to bring this technology easily to you.

The Ultimate Rugged Design:

The device is designed to withstand years of the toughest conditions. The device is virtually waterproof, drop-proof, dust-proof and tumble-proof, with a Gorilla Glass touch panel and imager window that offer maximum scratch-resistance and shatter proofing.

STANDARD FEATURES

- › Generate a report per NFPA 1989
- › Real-time Automated BAUER CONNECT® Cloud Sync¹
- › Offline storage when no connection is available
- › Tracks data per fill event
- › Cylinder inspection checklist with initials
- › Identifies out-of-hydro and/or expired cylinders
- › Warning when filling to incorrect pressure
- › RFID cylinder registration
- › Guest filling feature
- › Intuitive application design
- › Manual barcode scanning for non-RFID equipped cylinders
- › Cloud synchronization
- › Works on all SCBA manufactures RFID technology

¹ Sync when connected to WIFI (BCPROI) or Cellular signal (BCPROII)



UNICUS®4i

This game-changing filling station employs our state-of-the-art control system centered around a 15-inch HMI touch screen interface, which allows the operator to manage the entire system from the single-point touch screen.

The built-in RFID Reader (Data-Logging Interface) in the UNICUS® 4i automatically reads and records data from the RFID equipped SCBA cylinders. Simply set the cylinder in one of three (3) fill positions and the scanner antenna will automatically provide the date/location/pressure/person of the last fill along with the serial number and the bottle's total number of fills. NFPA 1989 data collection made easy.

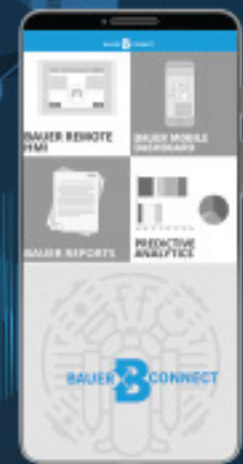
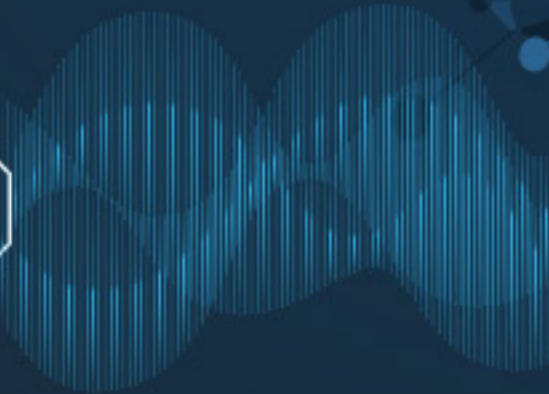
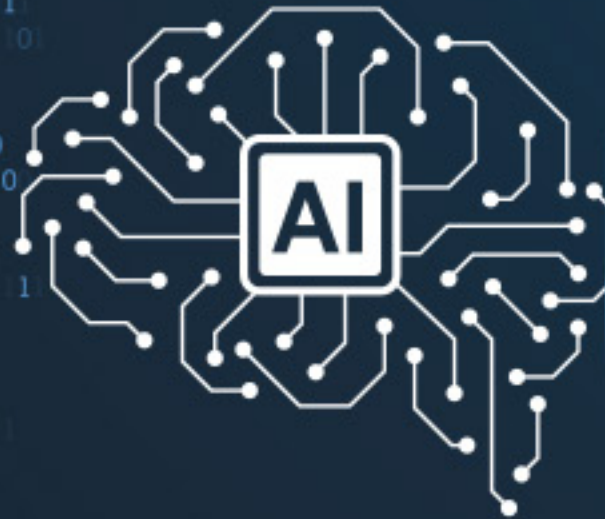


› UNICUS 4i
(SHOWING INSIDE FRONT)

STANDARD FEATURES

- › Generate a report per NFPA 1989
- › Real-time automated BAUER CONNECT® Cloud Sync¹
- › Offline storage when no connection is available
- › Tracks data per fill event
- › Cylinder inspection checklist with initials
- › Identifies out of hydro and/or expired cylinders
- › Warning when filling to incorrect pressure
- › Reporting
- › RFID cylinder registration
- › Guest filling feature
- › Intuitive application design
- › Manual barcode scanning for non-RFID equipped cylinders
- › Cloud synchronization
- › Works on most major SCBA manufactures RFID technology

To learn more about the BAUER RFIDPRO™ Reader, please contact our Breathing Air Sales team at bauer-connect.com/rfidpro



COMPRESSOR DATA COLLECTION & RECORDING

BAUER CONNECT® offers data logging and collection features in addition to SCBA data. The telemetry can be used to collect system data featured below.

B-DETECTION PLUS GAS MEASUREMENT SYSTEM

- › Monitors the quality of the Breathing Air produced by your system
- › Detects and measures trace amounts of harmful gases such as CO, CO₂
- › 3 available models: Stand-alone version, Mobile version or can be integrated into the compressor system
- › Avoids accidents by excessive CO in the breathing air cylinders

COMPRESSOR SYSTEM REPORT

- › Live connection to your BAUER Compressor system
- › Monitor and control the unit
- › Instant notifications of any system issues/alerts
- › Compressor runtime data
- › Ability to monitor Inner stage temperatures readings and pressures

PREDICTIVE CAPABILITY

BAUER PREDICTIVE ANALYTICS™

Using analytical software and sensors in conjunction with machine learning (ML) algorithms, predictive analytics can be performed to forecast trouble areas and identify needed repairs before a failure occurs. By measuring variables such as temperature, airflow and other critical components in real-time, failure can be detected ahead of time. The use of BAUER Predictive Analytics™ can also be used to analyze the same or similar components on other systems creating an overall strategy to guide parts purchasing and spare part inventory levels.

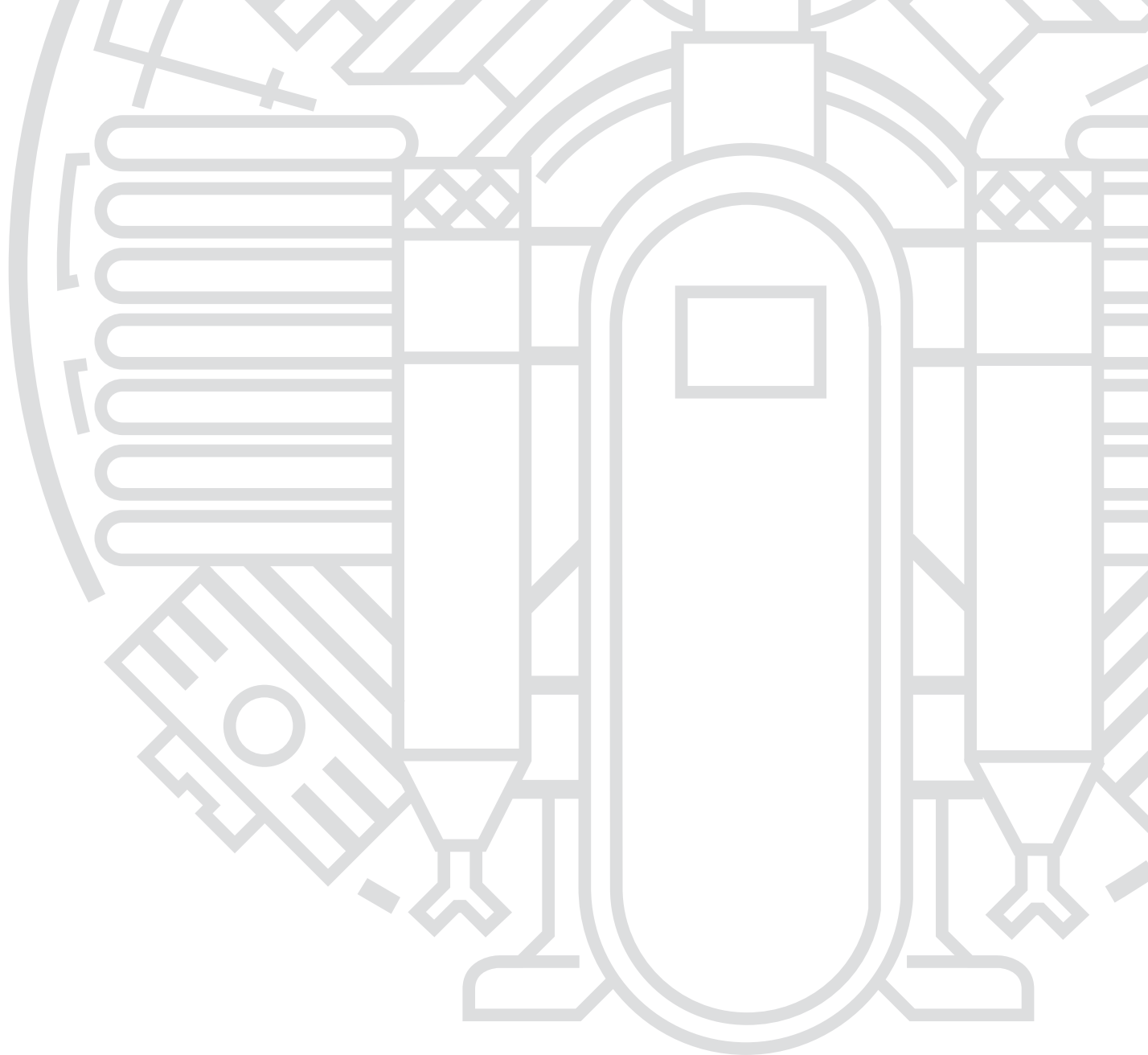
With this use of BAUER Cloud™ computing, more accurate tracking trends are created leading to more accurate predictions of potential problems in your devices and processes. A maintenance schedule can be created right from the BAUER Connect® App allowing for even more stress free-system monitoring.

AVOIDING DOWNTIME

Applying the latest machine learning algorithms and analytics, we estimate drive component lifetimes and propose maintenance to reduce the risk of failure.

- › Lets you know when to schedule compressor maintenance
- › Oil and filter changes based on compressor usage
- › Air purification filter change based on the number of fills made

BAUER expertise by your side – proactive measures to optimize maintenance, reduce downtime, and enhance overall performance. With over 70 years of experience in the High-Pressure Compressor System Solutions, the machine learning (ML) / A.I. provided by BAUER Predictive Analytics™ is just another way BAUER is leading the way in compressor technology.



U.S. HEADQUARTERS:
BAUER COMPRESSORS, INC.
1328 Azalea Garden Road
Norfolk, VA 23502
Tel. +1 (757) 855-6006
Fax +1 (757) 857-1041
SLS@BauerComp.com
www.BauerComp.com

U.S. BRANCHES:
BAUER MIAMI
Tel. +1 (954) 746-2504
Fax +1 (954) 746-2510
BFLSales@BauerComp.com

BAUER SAN FRANCISCO
267 East Airway Boulevard
Livermore, CA 94551
Tel. +1 (925) 449-7210
Fax +1 (925) 449-7201
BauerSF@BauerComp.com

BAUER NORTHEAST
2124 State Route 89
Seneca Falls, NY 13148
Tel. +1 (315) 568-5520
Fax +1 (315) 568-5520
Tim.Burgess@BauerComp.com

www.BauerBreathingAir.com

1116.01.20.AP 500
Subject to technical changes