



van note - harvey associates

Since 1894

INTEGRITY INNOVATION SUSTAINABILITY RESULTS

ENGINEERS | PLANNERS | LAND SURVEYORS | ENVIRONMENTAL CONSULTANTS



OVER 125 YEARS.

VAN NOTE-HARVEY ASSOCIATES traces its origin back to Charles Sincerbeaux, an engineer and land surveyor who opened his practice in Princeton in 1894. Since that beginning, the company has been in continuous operation and has expanded in size, scope and geographical service through several ownership transitions and name changes. In 1960, Van Note-Harvey Associates was incorporated.

Today, Van Note-Harvey Associates (VNHA) is a full-service consulting engineering, environmental, planning and land surveying organization headquartered in Princeton serving New Jersey, Pennsylvania and New York. Our staff of professional and support personnel have diverse educational and project backgrounds enabling us to provide a complete range of services to private and public clients from Fortune 500 corporations to neighborhood businesses, and at all levels of federal, state and local government.

VNHA provides professional services on design teams for numerous institutional, academic, and private development projects as lead consultant, as well as under subcontract to major building architects for design-build contracts, and has represented numerous municipalities and authorities as both engineer of record and as a consultant for special projects. The firm's experience ranges from totally new campus and facility site designs to minor expansion or modifications/improvements of existing facilities, and dozens of residential construction projects, and has encompassed every aspect of feasibility planning, concept/preliminary/final site design, stormwater management, site utilities, roads/parking, solar energy, site lighting/landscaping, and construction phase services.

Our environmental services division evolved approximately 40 years ago as a natural and integral part of our client services in site development, water resources and waste management fields. Our current full-service environmental capabilities range from environmental compliance to hazardous waste site remediation engineering and construction administration. We frequently serve clients as professional consultants for site/project investigations, remediation planning, environmental compliance studies, permitting for regulatory agencies at every level, construction bidding assistance, and construction administration.

Van Note-Harvey Associates is a professional corporation providing a true consulting service within the engineering, environmental, and surveying disciplines to public and private clients - services distinctive for the breadth of knowledge and depth of experience our professionals deliver.

Van Note-Harvey Associates supports our clients' project objectives with studies and plans that identify innovative, sustainable site solutions for each particular project. During the concept and analysis phase, a team of engineers, environmental scientists, and landscape architects play an essential, cooperative role in identifying critical natural features and development constraints. This timely information enables identification of a feasible and cost-effective use of a site.

The subsequent planning addresses environmental concerns, water supply and sewage disposal options, stormwater management options, as well as the local zoning, regional and state regulations which may impact development. Projects may then proceed into detailed design and construction planning and implementation with a clear understanding of how the project's goals and objectives will be achieved. This comprehensive approach by experienced professionals is designed to anticipate problems before they occur and prevent project crises from arising.



Corporate Client, Lawrence Township, NJ



Corporate Client, Lawrence Township, NJ

Virtually every major engineering project undertaken by the firm requires the timely filing and receipt of regulatory permits, and whenever environmental issues arose, VNHA has led in the environmental investigations and when necessary, the engineering design of remedial actions required providing for the projects to move forward. Our Environmental Services Division takes pride in its success record of efficient, timely and cost-effective environmental project approvals and completions.

Our goal is to create feasible designs, sensitive to environmental constraints and regulations, that reflect a high standard of form and functional integrity.



Capital Health, Hopewell Township, NJ

Our specialists collaborate to serve clients with a level of commitment equivalent to that of other trusted advisors, such as a company's attorney or accountant. Our clients count on us to keep them up to date on their projects' requirements and progress, well informed of pertinent issues and in compliance with regulatory requirements. It is such responsible coordination of services, allowing our clients to see the whole picture and how each specific facet of a project fits into it,

that sets us apart from our competition.

INNOVATIVE SUSTAINABLE SITE SOLUTIONS



USGBC
MEMBER

VNHA regularly serves on green building design teams for facilities qualifying for USGBC LEED Certification. Our Firm provides LEED Accredited Professionals at both the principal and staff levels, and is an active member of the United States Green Building Council (USGBC).

For the Site Civil Engineering discipline sustainable design focuses on linking natural and man-made systems to achieve balanced environmental outcomes that improve the quality of life and long-term health of the community in addition to the sustainability of a given project site.

Specific LEED credit initiatives employed by VNHA have included the prerequisite for Construction Activity Pollution Prevention, credits for Site Selection, Alternative Transportation, Site Development, Stormwater Management, Heat Island Effect, and Light Pollution Reduction.

SITE/CIVIL ENGINEERING

VNHA provides a full scope of design services for both reconstruction and improvements to existing facilities and the design of new construction projects. Sustainable design practices focus on linking natural and man-made systems to achieve balanced environmental outcomes that improve the quality of life and long-term health of the community in addition to the sustainability of a given project site. This creative approach has been responsible for the successful design of a wide variety of projects.

VNHA takes pride in being able to provide sound engineering design to overcome difficult or unusual project concerns.

Site Engineering

- ◆ Site Layout and Grading
- ◆ Earthwork Analyses
- ◆ Drainage/Hydraulics Analyses
- ◆ Stormwater Management Systems
- ◆ Storm Sewer Collection Systems
- ◆ Sanitary Sewer Collection and Treatment Systems
- ◆ Water Distribution/Services
- ◆ Roadway Plans and Profiles
- ◆ Driveways and Parking Areas
- ◆ Soil Erosion and Sediment Control
- ◆ Lighting and Landscape Design
- ◆ LEED Consulting

Real Estate Development

- ◆ Development Feasibility Analysis
- ◆ Land Subdivision Design
- ◆ Land Use Permitting
- ◆ Site Access/Internal Roadways
- ◆ Stormwater Detention/Retention
- ◆ Grading/Earthwork Analysis
- ◆ Utility Systems

Road/Parking Design

- ◆ Local Street Systems/Intersections
- ◆ Site Access and Internal Circulation Roads
- ◆ Pedestrian and Bike Path Design
- ◆ Parking Facilities
- ◆ Porous Pavement Solutions

Coastal Engineering

- ◆ Marina Development/Revitalization
- ◆ Tidelands Development
- ◆ "Dockominium" Design
- ◆ Piers/ Bulkheads
- ◆ Boardwalks
- ◆ Dredging
- ◆ Jetties and Seawalls
- ◆ Beach Protection/Maintenance/Replenishment

Municipal Engineering

- ◆ Funding Applications
- ◆ Highway/Street Design
- ◆ Development Plan Review
- ◆ Water/Sewer Engineering
- ◆ Tax Map Preparation/Updating
- ◆ Construction Inspection
- ◆ Planning/Zoning Board Consultation

Construction Phase Services

- ◆ Construction Cost Estimates
- ◆ Preparation of Contract Documents
- ◆ Construction Bidding Assistance
- ◆ Evaluation of Bids
- ◆ On-Site Observation of Construction
- ◆ Shop Drawing Review
- ◆ Change Order Review
- ◆ Evaluation of Payment Requests
- ◆ Preparation of Substantial Completion Reports



Constructed Stormwater Wetland Basin, Plainsboro Township, NJ



Eden Institute, Plainsboro Township, NJ



Centennial Park, Wildwood Crest, NJ

ENVIRONMENTAL CONSULTING AND COMPLIANCE

Our environmental services division evolved over 40 years ago as a natural, integral extension of the services provided to our site development, water resources and waste management clients. Current full-service environmental and site development capabilities range from environmental compliance to site remediation engineering and construction administration.

Land Use Consulting

- ◆ Environmental Constraints Evaluations
- ◆ Bidding Assistance and Review
- ◆ Negotiate Jurisdictional Determinations
- ◆ Mitigation Projects Monitoring/Reporting
- ◆ Real Estate Transfer/NJ - ISRA Compliance
- ◆ Spill Prevention, Control and Countermeasure (SPCC) Plans
- ◆ Stormwater Pollution Prevention (SPPP) Plans
- ◆ RCRA/CERCLA/SARA Compliance
- ◆ Expert Testimony

Environmental Remediation Services

- ◆ Soil/Groundwater Sampling, Analysis and Reporting
- ◆ Remedial Investigation/Remedial Alternative Analysis Reporting
- ◆ NJDEP Remedial Action Plans/Post Remedial Reports
- ◆ Memorandum of Agreement Assistance
- ◆ Administrative Consent Order Actions Implementation
- ◆ Groundwater Monitoring
- ◆ Groundwater Recovery/Treatment Systems Design
- ◆ Contaminated Soil Treatment Systems Design
- ◆ Bio-remediation/Chemical Oxidation Design
- ◆ Remedial Construction Contractor Administration

Freshwater Wetlands Consulting/Permitting

- ◆ Bidding Assistance and Review
- ◆ Negotiate Wetlands Jurisdictional Determinations
- ◆ Freshwater Wetlands Delineation/Mapping
- ◆ Coastal Zone Management Compliance (CAFRA)
- ◆ U.S. COE Section 10 and 404 Programs
- ◆ Stream Encroachment Permitting
- ◆ Natural Resource Inventories
- ◆ Wetland/Natural Resource Impacts Mitigation Design
- ◆ Mitigation Projects Monitoring
- ◆ Expert Testimony

Environmental Site Assessments

- ◆ Site Assessments/Real Estate transfers (ISRA)
- ◆ Due Diligence Assessments (ASTM E 1527-94)
- ◆ Phase I, II & III Site Assessments
- ◆ Asbestos and Lead Surveys
- ◆ NJDEP Preliminary Assessments/Site Investigations

Permitting & Regulatory Compliance

- ◆ Municipal Planning/Zoning Boards
- ◆ County Planning Boards
- ◆ Soil Conservation Districts
- ◆ Delaware & Raritan Canal Commission
- ◆ Sewage Treatment Authorities
- ◆ State/Municipal Waste Management
- ◆ Tidelands Resource Riparian Permits
- ◆ Waterfront Development; CAFRA
- ◆ Department of Transportation
- ◆ Drainage and Operating
- ◆ Pinelands Commission
- ◆ Construction Stormwater
- ◆ NJDEP Dam Safety

Utilities

- ◆ Potable Water Permits/Treatment Works Approvals
- ◆ Pollution Discharge Elimination System Permit Applications
- ◆ Wastewater Management Plan Amendments
- ◆ Water Allocation Certificate Applications
- ◆ Discharge Allocation Certificate Applications
- ◆ Groundwater Discharge Certificate Applications
- ◆ Coastal Area Facilities Review Act Permitting
- ◆ Water Quality Certification
- ◆ Groundwater Dewatering Permits
- ◆ Sewer Ban Exemptions
- ◆ Flood Hazard Area Permitting
- ◆ Landfill Disruption Permits



Washington Road Stream Restoration, Princeton, NJ



Corporate Client, Lawrence Township, NJ



Caspersen Boat House, Mercer County Park, West Windsor, NJ

COMPREHENSIVE SURVEYING

VNHA is staffed with licensed professionals possessing the educational background and experience (field and office) required to provide comprehensive surveying services. Our surveyors are equipped with the latest technological aids to assure accurate and efficient performance of the tasks required to meet the needs of owners, attorneys, real estate professionals, governmental agencies, and construction contractors. The same focus on detail that is infused in every other aspect of our practice yields prompt, reliable results when accuracy is particularly important.

- ◆ Right-of-Way/Route Surveys
- ◆ Tax Map Preparation
- ◆ ALTA/ACSM Land Title Surveys
- ◆ Hydrogeologic/Bathymetric Surveys
- ◆ Riparian/Wetlands Mapping
- ◆ Control Networks
- ◆ Property and Tidelands Acquisition
- ◆ Forensic Surveys
- ◆ Expert Testimony

Real Estate Development

- ◆ Boundary Line Surveys
- ◆ Minor/Major Subdivisions
- ◆ Topographic Surveys and Ground Control for Photogrammetric Mapping
- ◆ Existing Field Measurements for Engineering Design of Sanitary Sewers, Storm Drainage Systems and Roads
- ◆ Calculation/ Preparation of Final Subdivision Plats
- ◆ Condominium/"Dockominium" Surveys
- ◆ Waterfront Development

Construction Surveying

- ◆ Site Layout
- ◆ Survey Control - On/Off-Site
- ◆ Stake Out for Utilities, Curbing and Buildings
- ◆ Preparation of Grade Sheets
- ◆ Building Stake Out, Including Column Lines and Pinning of Footings/Foundations
- ◆ Construction Control for Foundations, Anchor Bolt Locations and Steel Erection
- ◆ As Built Surveys

Environmental Surveying

- ◆ Monitoring and Extraction Well Locations
- ◆ Soil Borings/Sampling Locations
- ◆ Excavation Quantities Documentation
- ◆ Overburden, Pre- and Post Surveys
- ◆ Wetland Mapping and Restoration Documentation

Geographic Information Systems (GIS)

- ◆ Comprehensive GIS Data Development
- ◆ GIS Needs Assessment
- ◆ GIS Design Development & Implementation Plans
- ◆ Facility/Constraint Analysis
- ◆ Conversion and Interoperability Services

Subsurface Utility Investigation Services (SUIS)

- ◆ Magnetic Locating
- ◆ Electromagnetic Conduction and Induction
- ◆ Ground Penetrating Radar(GPR)
- ◆ Floor and Wall GPR Scanning Technology
- ◆ Non-Invasive Test Holes
- ◆ Pipe Sonde Technology

Global Navigation Satellite System (GNSS) Services

- ◆ Control Surveys - Government, Aerial, Project, High Definition
- ◆ Environmental Surveys - Soil Borings, Wetlands, Monitoring Wells
- ◆ Legal Surveys - Boundary/Subdivision, Franchise Limits
- ◆ Existing Conditions - Topographic, Subsurface Mark Out, GIS
- ◆ Construction Surveys - Layout, Alignment for Positioning, As-Built
- ◆ Route Surveys - Highways, Rails, Pipelines and Utilities
- ◆ Specialty Surveys - Hazardous Waste Sites, Deformation Studies



Route 52 Bridge, Ocean City & Somers Point, NJ

Cold Spring Village Brewery Barn, NJ

Tapestry at Montgomery, NJ

HIGH DEFINITION 3D LASER SCANNING

Our High Definition Surveying (HDS) Services utilize 3D Laser Scanning to bring the latest in geospatial data collection technology and software to our clients. This technology is capable of collecting more data with greater detail than conventional surveying methods and in much less time.

This collection of points is known as a Point Cloud. Data can then be extracted from the point cloud to provide highly accurate and geo-referenced drawings / models of the existing site conditions utilizing a variety of software dependent on the project requirements. Through this form of data collection we are able to obtain the data remotely (enhancing safety, eliminating the need to send a survey technician in for locations), and to do so at a speed that reduces the need for traffic or rail interference or operational shutdowns.

An additional benefit includes the large amounts of data collected which could ultimately prove useful for future client needs.

The use of High Definition Laser Scanning helps us assist our clients in minimizing potential site design conflicts fulfilling our objective to give our clients the most reliable information and ultimately allowing their projects to run smoothly and efficiently.

VNHA Laser Scanning equipment:

- ◆ Leica ScanStation C10
- ◆ Cyclone and Cloudworx Software

Added Value Benefits:

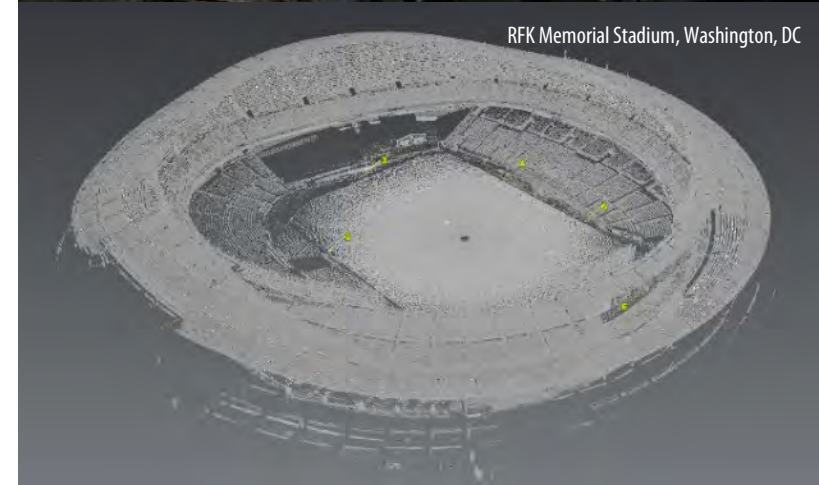
- ◆ Faster, better quality results
- ◆ Safer, unobtrusive data capture
- ◆ Shorter project cycle times
- ◆ Less ambiguity - more complete
- ◆ Higher level of detail
- ◆ Point clouds can be conveniently used & reviewed by others for more efficient management of projects

Potential Applications:

- ◆ Existing and as-built documentation
- ◆ Topographic, detail, and engineering surveys
- ◆ Detailed topographic and measured building surveys, interior and exterior
- ◆ Air, railway and road systems
- ◆ Infrastructure and transportation
- ◆ Heritage and archeological sites
- ◆ Forensic / Crime / Accident Investigation Documentation
- ◆ Building Information Modeling (BIM)
- ◆ Volumetric Analysis



Morey's Piers, Wildwood, NJ



RFK Memorial Stadium, Washington, DC



Chrysler Building, New York, NY



West 56th Street, New York, NY

WATER/WASTEWATER SYSTEMS

For more than 50 years, VNHA has provided a full spectrum of planning and design services to meet water supply, and wastewater treatment and conveyance needs on both an immediate and long-term basis. Numerous municipal, private, and industrial water and wastewater systems owners across the Northeast turn to us for superior engineering services. Decades of experience reveals its value in planning efforts, meeting specific client requirements while developing approaches that address the realities of budget and time yields the most practical solutions to every engineering challenge.

We pride ourselves in producing effective design solutions that minimize capital costs as well as long-term operation and maintenance expenses for our clients.

Facilities Planning

- ◆ System-wide Evaluations
- ◆ Updating and Upgrading Existing Plans
- ◆ Planning to Support Growth Projections
- ◆ Capital Budgeting
- ◆ Emergency & Long-Range Planning

Systems Design

- ◆ Wastewater Treatment and Conveyance
- ◆ Water Supply, Treatment, Storage and Distribution
- ◆ Pumping Station Design and Upgrades
- ◆ Infiltration/Inflow Investigations
- ◆ Industrial Treatment/Pretreatment Facilities
- ◆ Individual Sewage Disposal (Septic) Systems
- ◆ Re-rating or expansion of existing facilities
- ◆ Upgrading to meet current and stringent standards
- ◆ Rehabilitation to improve operations

Modeling and Analysis

- ◆ Feasibility / Conservation / Fire Flow Studies
- ◆ Main Rehabilitation
- ◆ Model Calibration
- ◆ Operations & Operations Efficiency
- ◆ Planned Outages
- ◆ Pump Station Sizing
- ◆ Reservoir Siting & Sizing
- ◆ Source/Substance Tracking
- ◆ System Improvements
- ◆ Valve Sizing
- ◆ Water Quality

Permitting

- ◆ NJDEP BWSE Permits
- ◆ NJDEP Treatment Works Approval
- ◆ National/State Pollution Discharge Elimination System Permit Applications (NJPDES)
- ◆ Wastewater Management Plans/Amendments (under Water Quality Management Plans or '208 Plans')
- ◆ Water Allocation Certificate Applications
- ◆ Discharge Allocation Certificate Applications
- ◆ Groundwater Discharge Certificate Applications

Bid and Construction Phase Services

- ◆ Bidding Assistance and Review
- ◆ Project Award/Notice to Proceed
- ◆ Resident Project Representation
- ◆ Shop Drawing and RFI Review
- ◆ Change Order Evaluation
- ◆ Progress/Pay Request Review
- ◆ Project Certification/Close Out

Operations Assistance

- ◆ Trouble-Shooting
- ◆ Start-Up Services
- ◆ Operator Training Programs
- ◆ O&M Manual Preparation
- ◆ Permit Compliance Assistance



CONSTRUCTION ADMINISTRATION

Van Note-Harvey Associates understands project construction from design through completion. We are fully aware that the overall project process, and its success, does not conclude at the completion of design or contract documents. At Van Note-Harvey Associates, Construction Administration begins with our design. Construction documents are reviewed for "constructability" and quality control well before they are issued to the Client for bidding and construction. During the construction phase we coordinate the project with the Owner, our Design Professionals, and the Contractor. As a consequence of this "extra step", Van Note Harvey is well positioned to minimize our Clients exposure to costly change orders and project delays.

Our daily construction observation/presence enables VNHA to thoroughly review the worthiness and validity of potential change order claims, should they be submitted by the contractor. Historically, VNHA has been able to provide our clients an exceptional return on their investment, in Van Note-Harvey Associates, when reviewing these claims on their behalf. VNHA's construction experience enables us to recommend bidding contractors for specific projects, based on their experience, integrity and quality of work. Successful construction administration requires a detail-diligent approach, which is aggressively managed by our construction administrators who have the experience, skills and technical support to confirm design documents have been translated into the construction properly.

Pride in the quality of our work, and integrity of our design, is what separates Van Note-Harvey Associates from other engineering firms.

- ◆ Perform Value Engineering for the benefit of our Client
- ◆ Prepare estimates of probable construction costs
- ◆ Prepare Bid Documents
- ◆ Conduct Pre-Bid Meetings & Bidder De Scope Meetings to determine "Actual Low Bid" vs "Apparent Low Bid" for Recommendation of Award
- ◆ Review Shop Drawings, Requests for Information(RFI)
- ◆ Conduct "Kickoff" Construction Meeting with Client/Contractor/Local Officials
- ◆ Review/Monitor Construction Schedules/Progress
- ◆ Provide Construction Observation/Monitor compliance w/Specifications/Plan Design
- ◆ Maintain/Record Daily Job/Field Reports/Measure Daily Work/Pay Quantities
- ◆ Conduct regular Construction Job Progress Meetings
- ◆ Review/Approve Contractors Pay Applications on behalf of Client/Owner
- ◆ Act as liaison between Client/Owner & Contractor
- ◆ Coordinate between Municipal Officials & regulatory agencies
- ◆ Change Order Reviews
- ◆ Prepare "completion punch list" and perform project close out services

Princeton University Stanworth Commons, Princeton, NJ



Forrestal Road South Reconstruction, Plainsboro Township, NJ



Janssen Pharmaceutica Porous Pavement Parking Expansion, Hopewell, NJ



PARTIAL LIST OF CLIENTS

A/E/C FIRMS

AKF Engineers
Ballinger
Bancroft Construction Company
Barr & Barr, Inc.
Callison RTKL
Clarke Caton Hintz
Ewing Cole Architects
Farewell Mills Gatsch Architects
Ford3 Architects, LLC
Francis Cauffman – Architects
Furino & Sons, Inc.
Gensler
Hall Construction
Hazen and Sawyer
HDR, Inc.
Holt Morgan Russell Architects
IH Engineers
Jacobs Engineering Group
J. Fletcher Creamer & Son, Inc.
J. Robert Hiller
Joshua Zinder Architecture + Design
KSS Architects
Lend Lease Construction
Melick-Tully and Associates, PC
Michael Baker, Jr.
NK Architects
Payette Associates, Inc.
Perkins-Eastman Architects
Princeton Engineering Group, LLC
PS&S Architecture
Saphire & Albarran Architecture LLC
Schlaich Bergermann Partner
Sikora Wells Appel
Skidmore, Owings & Merrill LLP
Spiegle Group
Stearns Associates
Studio Hillier
The Thomas Group
Timothy Haahs & Associates
V.J. Scozzari & Sons
WXY Architecture & Urban Design

CORPORATE

Bank of America
BioMed Realty Trust, Inc.
Bristol-Myers Squibb
C.B. Richard Ellis
Educational Testing Service
Firmenich, Inc.
Institute for Defense Analyses
Integra Life Sciences
Janssen Pharmaceutica
Johnson & Johnson
Jones Lang LaSalle
LCOR Incorporated
McGraw Hill
Merrill Lynch & Company, Inc.
Morey's Piers and Water Parks
Munich Re-Insurance
Novo Nordisk Inc.
Public Art Foundation
S&P Global
The Briad Group

DEVELOPERS

Aegis Property Group
American Campus Communities
American Real Estate Partners
Baker Residential
Briad Development, LLC
Cedarbridge Development Corp.
Coastal Research & Development
DKM Properties Corp.
Dickson Development
Eastern Properties
K. Hovnanian Shore Acquisitions, LLC
Lincoln Equities Group
Mack-Cali
Matrix Development Group
National Business Parks
NJ HAND (Housing and Neighborhood Development, Inc.)
Normandy Real Estate Partners
Oestreicher Properties, Inc.
Patrinely
Princeton Community Housing
Princeton Forrestal Center
Pulte Homes
Sansome Pacific Properties
Sharbell Development Corporation
Somerset Development Corp.
Toll Brothers, Inc.

EDUCATION

American Boychoir
Brookdale Community College
Chapin School
Eden Institute
Hun School of Princeton
Institute for Advanced Study
Lawrence Township B.O.E.
Lower Cape May Regional School District
Mercer County Community College
Perth Amboy School District
Princeton Academy of the Sacred Heart
Princeton Day School
Princeton Theological Seminary
Princeton University
Rider University
Rowan University
Rutgers State University
Stockton University
The College of New Jersey
The Lawrenceville School
The Pingry School
The Wilberforce School
West Windsor-Plainsboro School District

HEALTHCARE

Cape Regional Medical Center
Capital Health
Deborah Heart & Lung Center
Newark Community Health Center
Princeton First Aid & Rescue Squad
Princeton Health Care System
Princeton House Behavioral Health
Robert Wood Johnson Foundation
The Children's Hospital of Philadelphia
Windrows at Princeton Forrestal

HOA/COA

Advantage Property Management
Avon Village 2 Condominium Association
CAMCO Management Company
Cooper Valley Village Association, Inc.
Huntingdon Valley Club Condominium Association
Southfields Homeowners Association
Stonerise at Lawrenceville
The Grand at Diamond Beach Condominium Association
Villas at Shady Brook Community Association
Wentworth Property Management
Yardley Commons Condominium Association

GOVERNMENT/MUA

Borough of Cape May Point
Borough of Pennington
Borough of Princeton
Borough of Wildwood Crest
Borough of Woodbine
Cape May County
Cape May County M.U.A.
City of Cape May
City of Jersey City
City of North Wildwood
City of Somers Point
City of Trenton
City of Wildwood
Mercer County
Mercer County Improvement Authority
Middlesex Water Company
Montgomery Township
NJ Economic Development Authority
NJ Schools Development Authority
Princeton
Princeton Sewer Operating Committee
Stony Brook Regional Sewerage Authority
Township of Bernards
Township of Hamilton
Township of Hillsborough M.U.A.
Township of Hopewell
Township of Lawrence
Township of Lower M.U.A.
Township of Middle
Township of West Windsor

LAW FIRMS

Ballard Spahr, LLP
Drinker Biddle & Reath LLP
Giordano, Halleran & Ciesla, PC
Greenbaum, Rowe, Smith & Davis, LLP
Landman Corsi Ballaine & Ford PC
Mason, Griffin & Pierson, PC
Pepper Hamilton, LLP
Saul Ewing Arnstein & Lehr, LLP
Schatzman Baker, LLC
Smith, Stratton, Wise, Heher & Brennan
Stark & Stark
Stevens & Lee



Twin Pines Recreation Facility, Hopewell and Lawrence Townships, NJ



Sunrise Park, Wildwood Crest, NJ



John Rogers House Preservation, Hamilton, NJ



Princeton University Frick Chemistry Building, Princeton, NJ



Princeton First Aid & Rescue Squad, Princeton, NJ



7th Avenue Bulkhead, North Wildwood, NJ

Van Note-Harvey Associates, Inc.

NJ Certificate of Authorization #24GA28271300

103 College Road East
Princeton, NJ 08540
(609) 987-2323 | Fax (609) 987-0005

211 Bayberry Drive, Suite 2-E
Cape May Court House, NJ 08210
(609) 465-2600 | Fax (609) 465-8028

www.vannoteharvey.com

ENGINEERS | PLANNERS | ENVIRONMENTAL CONSULTANTS | SURVEYORS



Since 1894