

About | GPI

In 1966, A. Beecher Greenman and Bert Pedersen launched a multi-disciplined engineering company with a mission of providing professional services with an exceptional commitment to quality. The founders of Greenman-Pedersen, Inc. (GPI) believed that quality should never be an afterthought, but an integrated process woven into each step of a project.

Fifty years later, more than 1,500 GPI employees, maintain that commitment and infuse it into every aspect of the business. As a 100 percent employee-owned company, every employee is a stakeholder with a vested interest in the success of projects. This incentive facilitates a fully collaborative approach to delivering services leading to successful projects and satisfied clients.

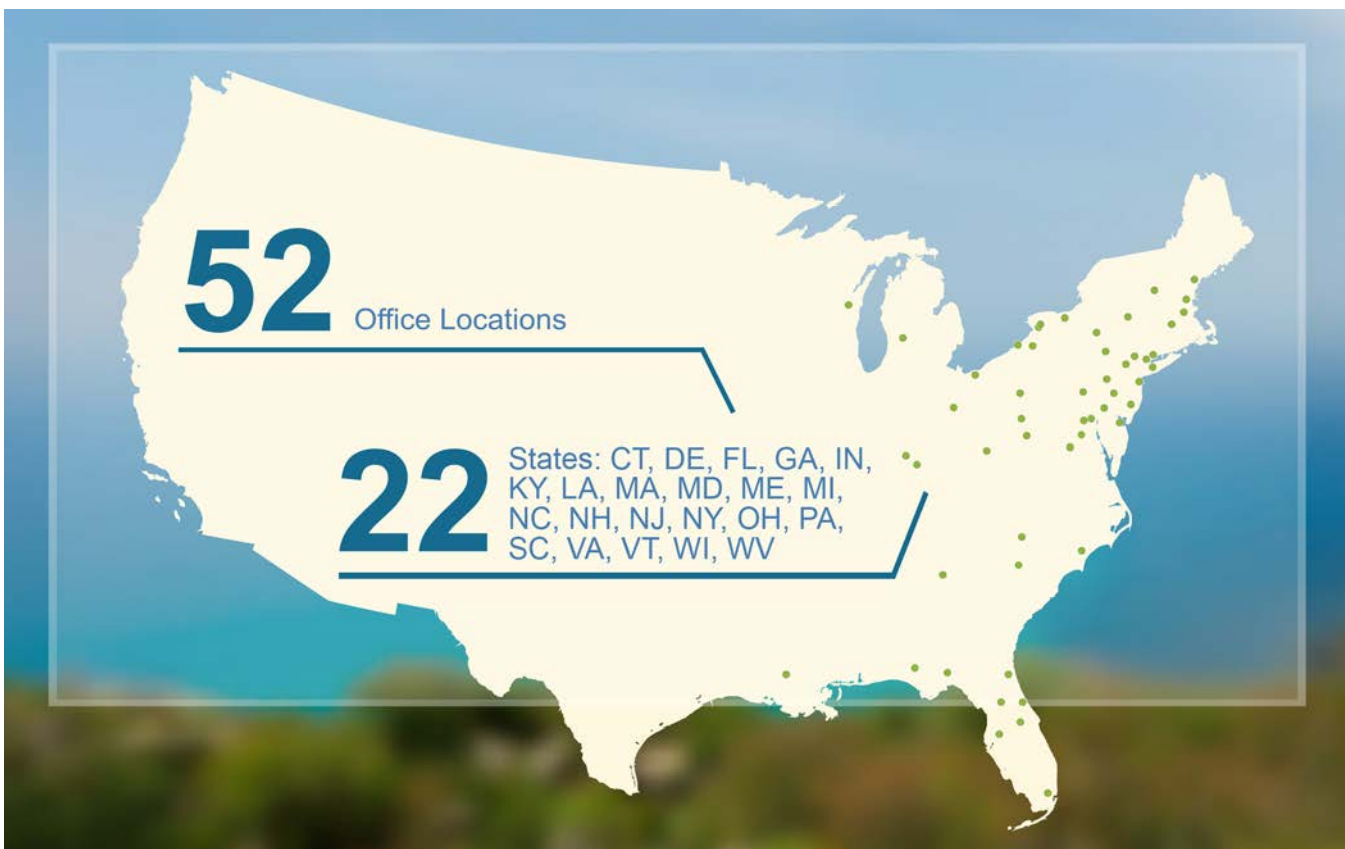


The company's strategic objectives encompass areas such as employee satisfaction, client satisfaction, quality products and services, and staying on budget. Over the years, GPI earned its reputation for excellence by delivering on these cornerstone principals. In fact, GPI consistently achieves acclaim in Engineering News Record Magazine's "Top 100 National Design Firms" in several categories.

GPI is enthusiastic about its future as well. The company stands at the forefront of innovative and sustainable advances in technology and project delivery methods, while continuing to grow and improve upon the traditional services, essential to our business.

Where We Are

Our NJ office headquarters is located in Hunterdon County and is a full service design and construction management office with a staff of 230 focused on the transportation sector. The NJ office is the largest design office in the Firm and includes nationally recognized expertise in bridge design, civil/highway design and transportation planning.





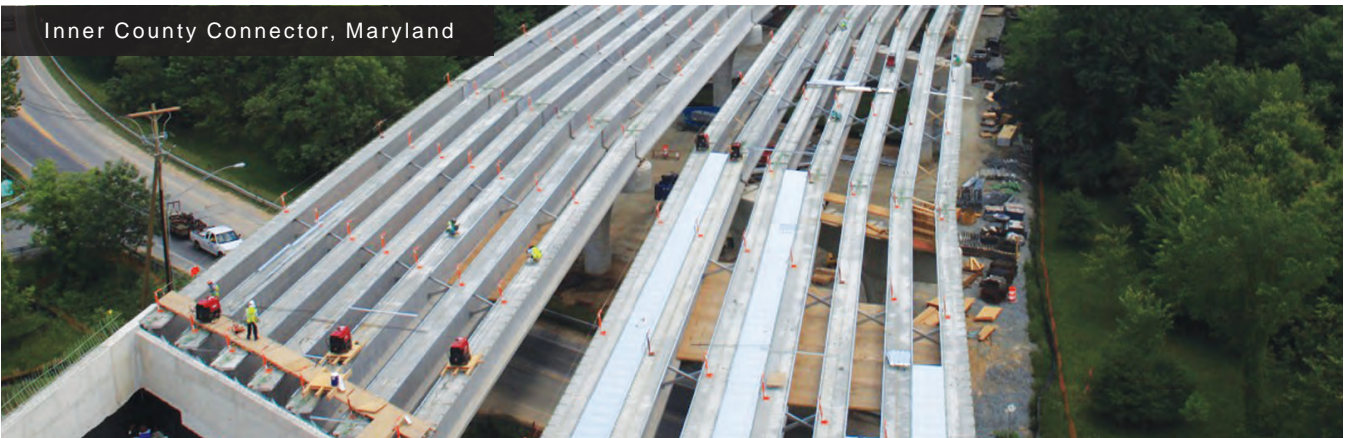
GPI specializes in construction engineering and inspection of transportation infrastructure projects that range from narrow roadways to the most significant bridges in the industry. Taking a proactive approach to identifying and resolving issues early in the schedule assures quality construction, timely delivery, and staying within budget.

Employing nearly 500 construction inspectors, makes construction management services one of its largest service line. Recognized as an industry leader, GPI continues to raise the standard for premium construction inspection and support services through outstanding performance and applying the latest technology for added efficiency.

Related Services

- Claims Management
- Construction Engineering
- Constructability
- Inspection
- Program Management
- Document Management
- Safety Training
- Schedule/Estimating
- Resident Engineering

Inner County Connector, Maryland





Bridges and transportation-related structures are some of the most critical components of our national infrastructure and are usually in a state of change, rehabilitation, or redesign. GPI continues to provide planning, inspection, design, and construction services to government agencies and private owners who are responsible for building and maintaining that national infrastructure.

GPI's bridge engineering professionals specialize in full-service bridge and transportation-related structural design from concept through construction. Leveraging our national technical network of

resources and bridge expertise, we can deliver innovative, economical and sustainable solutions.

The Federal Highway Administration (FHWA) also relies on GPI's bridge engineering experts to instruct bridge rehabilitation courses and training as well as to author FHWA bridge maintenance manuals. GPI continually strives to hold a leadership position in providing bridge engineering services nationally and has been long-recognized in *Engineering News Record's* list of Top National Bridge Engineers, currently ranked #2 in the nation.

Related Services

- Complex Bridge Analysis, Modeling & Design
- Rehabilitation & Preservation of Historic Structures
- NBIS Bridge Inspection & Reporting
- Load Rating & Capacity Analysis
- Rail/Transit Bridge Design
- Alternative Project Delivery
- Pedestrian Bridges
- NHI Training
- Underwater & UAV Inspections

Pulaski Skyway Rehabilitation, Newark & Jersey City, New Jersey





From simple roadway or sidewalk design projects to complex highways and interchanges, GPI continues to enhance transportation infrastructure while increasing safety for all modes of travel on roads all over the country.

The evolution of highway design began with CADD and 3D models and the technology is continually changing. However, the underlying principles remain the same: highly trained engineers designing quality work to satisfy client needs.

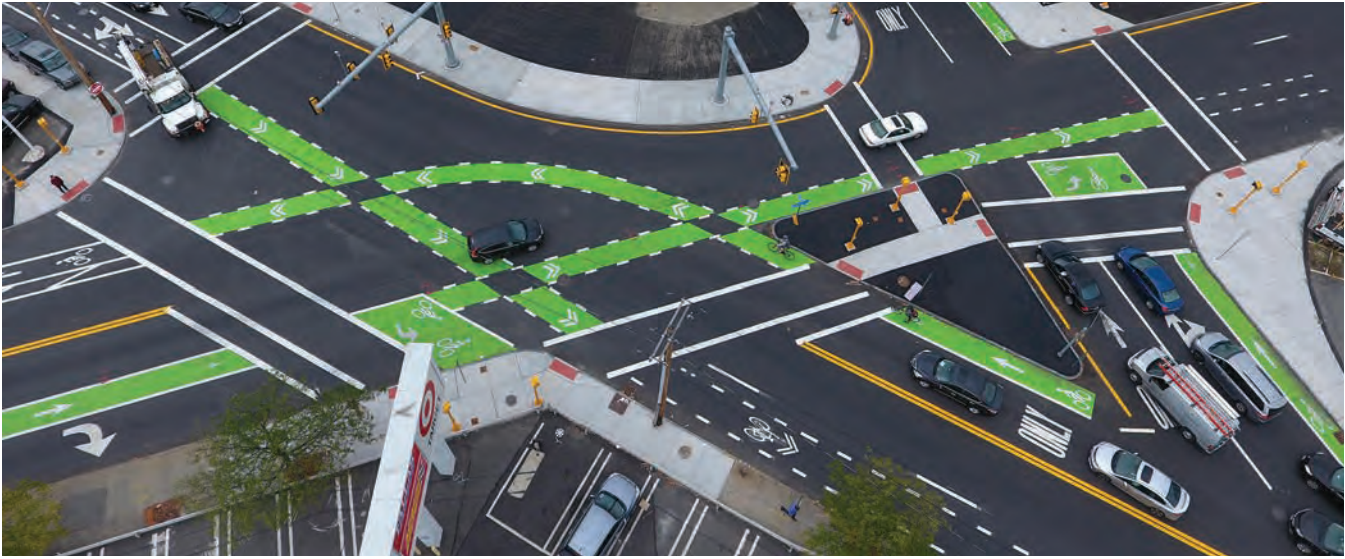
With a growing focus on multi-modal accommodations and complete streets design, the combined staff of GPI engineers, planners, landscape architects, and scientists is incorporating design elements such as bicycle lanes, bus rapid transit facilities, and enhanced pedestrian zones.

Related Services

- Highway Design
- Pavement Evaluation
- Shared Bike Facilities
- Highway Drainage
- Rails to Trails
- Toll Plazas
- Local Road Design
- Roundabouts & Intersections



GSP Improvements to Interchanges 154 & 155P, New Jersey



Roadway safety improvements and complicated capacity problems require state-of-the-art solutions. Demonstrating innovative equipment and low-cost solutions, GPI professionals use technology to enhance transportation infrastructure, mobility, and operations.

As a recognized leader in ITS solutions, GPI often performs complicated simulation modeling not only to evaluate a project's merits but also to provide visuals that support public outreach efforts.

GPI is also at the forefront of the development of immersive virtual reality experiences, which enables users to see the finished product.

When it comes to traffic engineering services, GPI remains committed to providing innovative and context-sensitive solutions that ensure quality and cost-savings to clients.

Related Services

- Asset Management
- Parking Studies
- Traffic Signals
- ITS/Signal Systems
- Traffic Calming
- Simulation Modeling
- Parking Facilities
- Traffic Impact Studies
- Transit Studies

Queens Boulevard Complete Streets in Virtual Reality, Queens New York





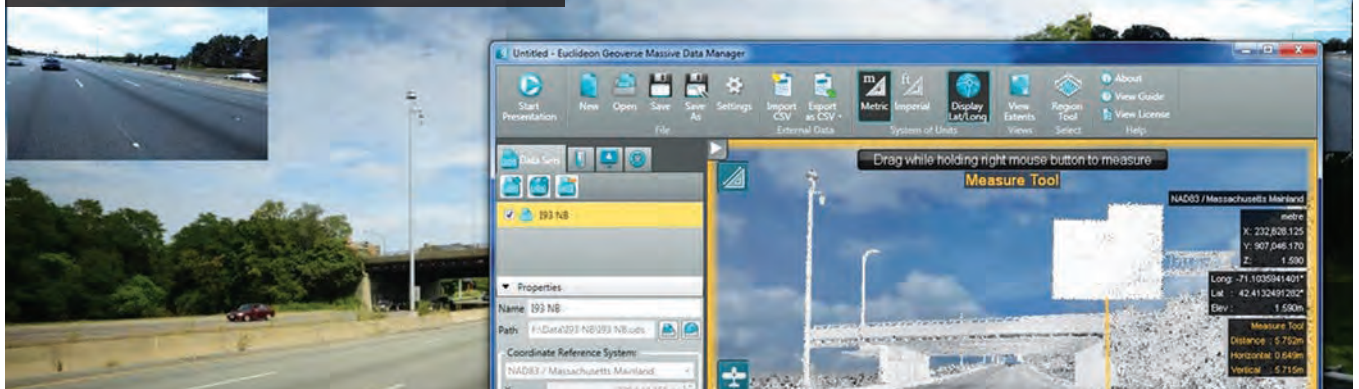
GPI provides asset management and geographic information system (GIS) services for large-scale transportation-asset data collection projects using the latest and most innovative technologies. For example, GPI professionals operate mobile LiDAR equipped vehicles and GPI's proprietary HyRoad and NightRider software applications.

The combination of skilled integration and custom application development for asset management systems along with video-log viewing systems makes GPI a “one-stop” shop for all asset management needs. GPI experts work with technology vendors and software companies to develop advanced but easy to use tools for clients.

Related Services

- Custom Applications
- Sign Management Systems
- Database Management
- Inventories & Assessments
- GIS Management & Support
- GIS Planning

MassDOT Sign Inventory, Massachusetts





The Geospatial division of GPI provides surveying services to support in-house design as well as the needs of clients. GPI approaches surveying with a variety of methods and applies the most advanced tools in the industry. GPI offerings range from traditional survey techniques to 3D laser scanning or terrestrial LiDAR, with projects ranging from site designs to indoor fit-up plans.

Some of the surveying methods include robotic total station, global positioning system real-time kinematic (GPS RTK), terrestrial and mobile laser scanning (LiDAR), and aerial

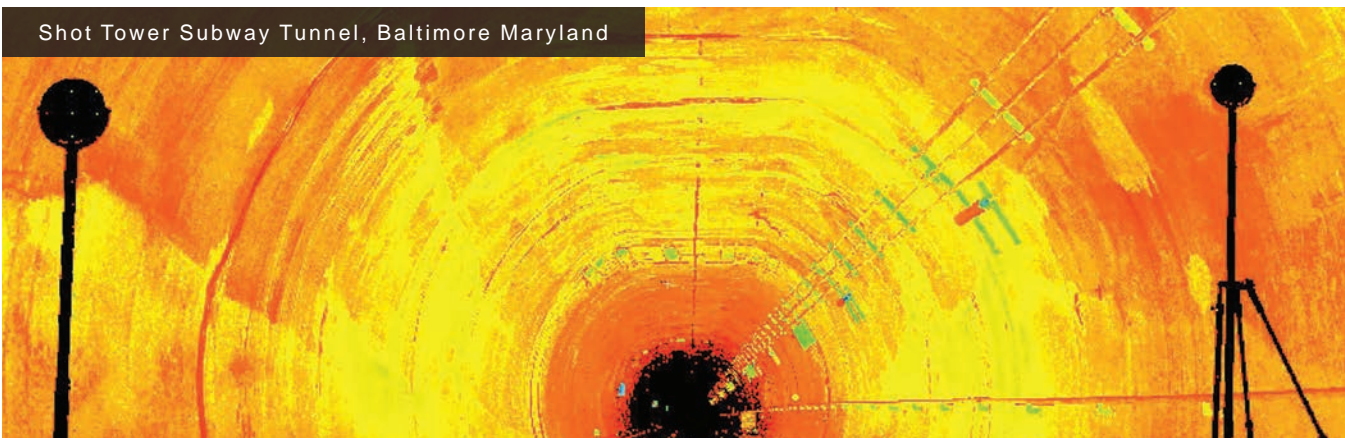
survey and mapping, which uses fixed winged manned aircraft or unmanned aircraft systems (UAS/drone). GPI is one of the first engineering firms permitted by FAA to offer survey and mapping from a drone platform.

All of these tools allow GPI to capture imagery and produce point cloud data cost-effectively, allowing us to generate engineering documents such as orthophotos, survey base mapping, digital surface models, and high definition video and imagery.

Related Services

- 3D Laser Scanning
- Robotic
- Construction Stake-Out
- Drone Mapping
- Topographic Survey
- Alta Surveys
- Interior Space/BIM
- Right-of-Way
- Transmission Lines

Shot Tower Subway Tunnel, Baltimore Maryland





GPI expert planners and designers provide clients with planning and development, landscape architecture, environmental science, and civil engineering. Multi-discipline teams assist communities in urban, suburban, and rural settings, and are proficient in design strategies and implementation techniques that shape the environment and create desirable places to live, work, and play.

Ever-changing demographics call for a renewed emphasis on redeveloping urban centers and accommodating the needs of multi-modal users. GPI continues to expand in this area with projects that include complete streets principles, recreation areas, and trail designs.

Related Services

- Land Use Planning
- Master Planning
- Streetscapes
- Complete Streets
- Landscape Architecture
- Parks & Recreation
- Pedestrian Design
- Low Impact Development
- Urban Planning

Hampton Beach Improvement, Hampton New Hampshire





Local governments, water suppliers, land managers, and permitting agencies all want to protect and preserve natural resources. GPI offers a high level of expertise in the fields of environmental science and environmental planning. GPI employees possess the knowledge necessary for regulatory procedures that support the National Environmental Policy Act (NEPA) and the enactment of the Amendments to the Water Pollution Control Act.

GPI's in-house capabilities mean that projects can go from the conceptual stage through environmental hearings and permits, without costly delays or the need for significant redesigns. Understanding that a project cannot move forward without addressing its surrounding natural resources, GPI experts balance development and infrastructure needs with stewardship of the environment.

Related Services

- Construction Monitoring
- Fluvial Geomorphology
- Low Impact Development
- Impact Assessments
- Wetland Mitigation & Design
- Permitting
- LEED Accreditation
- Wildlife Assessment
- Water Quality

JB Starkey & North Pasco Regional Wellfields, Florida





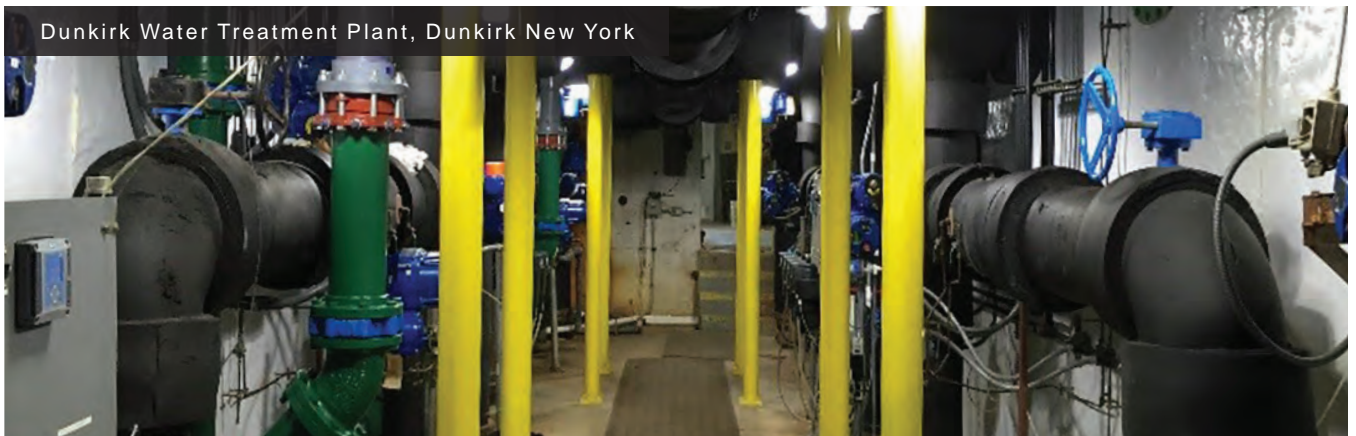
GPI continues to expand its services into the field of water distribution systems and reclaimed water projects. Teams of water/wastewater experts aid in the design development and construction or rehabilitation of wastewater treatment and collection facilities.

Some of these projects include gravity sewers, treatment systems, pumping stations, and pressure sewer systems. GPI offers the expertise and knowledge of Environmental

Protection Agency (EPA) and state regulatory requirements regarding municipal and industrial wastewater treatment and National Pollutant Discharge Elimination System (NPDES) discharge permits to communities, both small and large.

Related Services

- Treatment Facilities
- Storage & Pumping Facilities
- Distribution & Collection Networks
- Asset Management
- Water Supply Development
- Reclaimed Water



Dunkirk Water Treatment Plant, Dunkirk New York