

BLACKBELT® MAXX



- Anti-ice/slurry/pre-wet/material hauling
- Body lengths: **11' to 17'**
- Material capacity: up to **13.25** cu.yd. struck
- Liquid capacity: up to **660** gallons
- **54"** wide **PURE** belt - no chain maintenance
- Self-cleaning design - steep **71°** sloped sides
- Lower center of gravity
- Unloads **FASTER** than a dump body

MUNIBODY® 35°



- Anti-ice/slurry/pre-wet/material hauling
- Body lengths: **10' to 17'**
- Material capacity: up to **14.2** cu.yd. struck
- Liquid capacity: up to **460** gallons
- Self-cleaning design
- Handles sticky materials such as asphalt

MUNIBODY® 22°



- Anti-ice/slurry/pre-wet/material hauling
- Body lengths: **10' to 17'**
- Material capacity: up to **15.7** cu.yd. struck
- Liquid capacity: up to **300** gallons
- Self-cleaning design
- Lower center of gravity

MUNIBODY® FF



- Anti-ice/slurry/pre-wet/material hauling
- Body lengths: **10' to 16'**
- Material capacity: up to **22.6** cu.yd. struck
- Liquid capacity: up to **900** gallons*
- Lowest center of gravity

* With optional
Hi-Tech
Wedge Tanks



HITCHES



Choose from our ProHitch, Quick Hitch, Pin Hitch, Low Profile Hitches, Manual Tilt, Power Tilt, Quick Link, Oscillating Loop, Pin & Loop, Husting Hitch, Parallelogram Hitch and many more.

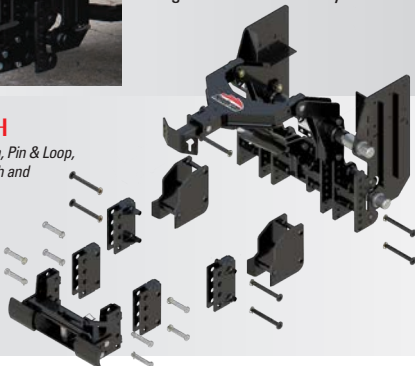
PROHITCH

Connections for Quick Hitch, Pin & Loop, 21" Pin Hitch, 30.5" Pin Hitch and 33.5" Pin Hitch.

Height adjustments can be made in 1" increments.

All connections are quickly interchangeable.

ProHitch is compatible with most forward-tilt hood openings.



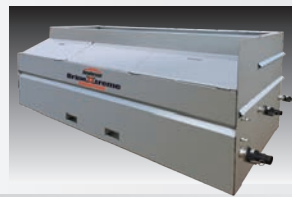
BrineXtreme® INFINITY™



With Auto-Clean Technology™

- Continuous, high-efficiency automatic production with continuous automatic cleanout
- Choose **Pro** or **Ultimate** controls (below)
- **100%** automated self-cleaning
- 5 cu. yd. hopper
- Mobilized/trailer version available

BrineXtreme® ADVANTAGE™



- High-efficiency, high-performance brine maker
- Choose **Pro** or **Ultimate** controls (below)
- Sloped floor & unobstructed access to clean out door
- Easy manual clean out
- 4.67 cu. yd. hopper

PRO CONTROLS

- Up to **6,000** GPH
- **100%** automation & repeatability
- Plug and play installation
- Handles all salt - treated or not
- Available with integrated or detached controls with Advantage
- Add **Truck Fill Station** to blend up to 3 products



ULTIMATE CONTROLS

- **100%** continuous self-cleaning & production with BrineXtreme® Infinity™ - up to **7,500** GPH
- **100%** automation & repeatability
- Makes brine & blends with up to 4 additives and 3 micro ingredients
- Handles all salt - treated or not
- Variable fill rates: 20-400 GPM
- Fill up to 3 trucks simultaneously



BrineXtreme® TRUCK FILL STATION

- Truck fill and/or blending system
- Blend up to 3 products
- Storage tank agitation
- Secure data logging
- Remote access
- Up to 100 unique users
- Flow rates of 100 or 200 GPM
- Plug and play installation



We offer a wide array of products and options not shown here.
For more information, photos and videos, visit us online or call **TODAY!**

© Henderson Products, Inc., a division of Douglas Dynamics, LLC, reserves the right in pursuit of continuous product improvement to change specifications used herein. As a **custom manufacturer** of truck bodies, truck equipment and brine systems, additional product options may be available that are not shown here.

Henderson

1085 S. Third St., Manchester, IA 52057
(800) 359-4970
hendersonproducts.com

Sourcewell
Formerly NJPA

BRINEXTREME: 052919-HPI
ALL OTHER: 080114-HPI

HP-001 2M 3/20

Henderson®



The Dependable Ones

LEADERSHIP IN TRUCK EQUIPMENT &
BRINE MAKING TECHNOLOGY



Henderson Products, Inc. is a custom manufacturer of brine systems and heavy-duty work truck equipment. Our products are used by an array of customers: D.O.T.s, Cities, Counties, Universities, General Contractors, Landscape Contractors and many more. We have the ability to meet nearly any customer spec or requirement.

MAGNUM™



- An elliptical demolition body for serious jobs
- Body lengths: **12' to 20'**
- Material capacity: up to **22 cu. yd.** struck
- Self-cleaning design
- Low center of gravity

MARK™ E TANDEM AXLE



- The world's most customizable dump body
- Body lengths: **12' to 18'**
- Material capacity: up to **23.9 cu. yd.** struck
- Construction: mild steel, stainless steel, AR 400 or any combination
- Low center of gravity
- Many options: head sheets, side walls, tailgates, hoists, etc.

MARK™ E SINGLE AXLE



- The world's most customizable dump body
- Body lengths: **10' to 12'**
- Material capacity: up to **14 cu. yd.** struck
- Construction: mild steel, stainless steel, AR 400, or any combination
- Low center of gravity
- Many options: head sheets, side walls, tailgates, hoists, etc.

MARK™ III



- Rugged unibody-style dump body
- Body lengths: **8' to 11'**
- Material capacity: up to **5.8 cu. yd.** struck
- Construction: mild steel or stainless steel
- Many options: head sheets, fold-down side walls, tailgates, sloped sides, etc.

MARK™ IV



- The contractors choice
- Rugged unibody-style dump body
- Body lengths: **12', 14' or 16'**
- Material capacity: up to **6.6 cu. yd.** struck
- Construction: mild steel or stainless steel
- Many options: head sheets, split fold-down side walls, tailgates, sloped sides, and more

PLOWS



- Expressway Plow
- One-way Plow
- RSP Plow - reversible snow plow
- RSP Flex Plow - reversible flex snow plow
- MSP Plow - mid-size snow plow
- MTP Plow - medium-duty trip edge plow
- MTP Flex Plow - medium-duty flex plow

WINGS



- HWS Wing - Henderson Wing System
- Extended Mid-mount Wing
- SD Wing - severe-duty leveling wing
- SDH Wing - severe-duty hydraulic leveling wing

UNDERBODY SCRAPERS



- Fixed Angle Underbody Scraper
- Reversible Underbody Scraper
- Oscillating Underbody Scraper
- Up to **6°** of grade adjustment

FSH™



- Heavy-duty sand and salt spreader
- Body lengths: **8' to 16'**
- Material capacity: up to **15 cu. yd.** struck
- Construction: mild steel or stainless steel
- Conveyor options: chain, belt-over-chain, single or dual augers
- Options: pre-wetting, top grate screens, electric motor, cab shield, bumpers, stands, etc.

TGS



- Dump body tailgate spreader
- **6" or 9"** auger
- Construction: mild steel or stainless steel
- Does not interfere with normal hauling or dumping operations
- Optional: slurry generation, pre-wet kit, shouldering chute, stabilizer bar kit, ground speed control, electric motor and more

RTS



- Dump body tailgate spreader
- **6"** auger with agitator shaft
- Construction: mild steel or stainless steel
- Optional: adjustable baffle, dual flow control, electric motor



ENVIRONMENT ■ ECONOMY ■ SAFETY

LAS™



- Liquid application system
- Tank capacities: up to **2,000 gal.**
- Fits into dump body using front and side wheel guides
- Frame: mild steel or stainless steel
- One, two or three lane applications
- Options: self-loading leg kits, chassis mounts, hose reels, surge busters, etc.

FIRST RESPONSE™



- Premium liquid anti-icing & deicing system
- Length: **9' to 15'**
- Granular capacity: up to **9 cu. yd.** struck
- Liquid capacity: up to **1,500** gallons
- Stainless steel construction
- One, two or three lane applications
- Options: chassis mount, heavy-duty top grate screens, inverted vee and hold-down kit

TASK FORCE™



- Liquid anti-icing & deicing system
- Length: **10' to 16'**
- Granular capacity: up to **15 cu. yd.** struck
- Liquid capacity: up to **800** gallons
- Construction: mild steel or stainless steel
- One, two or three lane applications
- Options: self-storage stand, top grate screens, inverted vee, hold-down kit, rear bumper, etc.

PWS™



- Pre-wet system
- Electric & hydraulic systems
- Reduces scatter
- For quicker formation of brine solution
- Brine forms and melts ice at lower temps
- Reduces salt spread rates
- In-cab controls

DIRECTCAST™



- On-the-go directional control
- Complete in-cab control
- Upgrade from a standard spreader disk-fits most Henderson spreaders
- Precise control of output, coverage pattern and direction up to **3** lanes
- Environmentally friendly with much tighter control of salt use