



Welcome!

Welcome to the AAB/CRB virtual exhibit booth at ASRM 2020. Read on or click a bullet point below to learn the latest AAB/CRB news and information:

- Documenting Your ASRM 2020 Continuing Education With ABB/PEER
- 25th Annual CRB Symposium, May 13-15, 2021, Austin, Texas
- Insurance Programs for IVF Clinics, Laboratories, and Individuals
- AAB Proficiency Testing – **SAVE** on 2021 Programs
- Nationally Recognized Board Certifications from the American Board of Bioanalysis (ABB) and from the AAB Board of Registry (ABOR)
- **NEW 2020 A&E Online Course** and **2020 A&E Review Manual**
- AAB Catalog of Print and Online Educational Resources

For more information, visit the [CRB website](#), or contact the CRB office by email: crb-aab@aab.org or telephone: 1-314-241-1445.



How to Document Your Continuing Education Activity for ASRM 2020 with the American Board of Bioanalysis (ABB) Professional Enrichment/Education Renewal (PEER) Program

View ABB/PEER-approved ASRM 2020 scientific sessions, roundtables, abstracts, and post-graduate courses [online](#).

Each ASRM session will have a banner indicating the continuing education (CE) credit for which it is eligible (CME, PEER, etc.). If PEER is on this banner, it is eligible for ABB-PEER credit. If CE is crucial to you, look for the courses that have PEER indicated for CE.

Upon completing the session, there will be an opportunity to select the type of CE you would like to receive. There could be up to 10 types of CE available. To receive CE credit from ABB-PEER, you must select PEER.

ASRM will forward proof of your attendance to the ABB-PEER office, and the CE earned will be documented in your online CE account within 45 days of completion.

If you attend a live session (abstract, poster, roundtable, or expert encounter), your activity will be tracked by the length of time you are logged into the activity. ASRM will forward this information directly to ABB/PEER within 45 days of your attendance.

If you attend an on-demand session that requires an evaluation (interactive, symposium, plenary, lecture, or post-graduate course), you must complete the evaluation by **December 31, 2020**, to obtain CE credit. ASRM will then forward this information directly to ABB/PEER within 45 days of your submission of the evaluation to ASRM.

The final date to claim credit with ASRM is **December 31, 2020**.

Attention Florida Licensees

Submit your complete Florida license number (including 2-digit letter prefix) to abb@abbcert.org (Attn: PEER) within 30 days of attending the meeting to receive CE credit for your Florida license. Be sure to specify how the credit should be divided among the specific categories, e.g., Andrology, Embryology, Supervision, General.

Contact the ABB office with any questions. Email: abb@abbcert.org or call: 1-314-241-1445.



25th Annual CRB Symposium

ART: On the Cutting Edge

May 13-15, 2021

AT&T Hotel and Conference Center • Austin, Texas

PRELIMINARY PROGRAM

■ IVF Tool Box - Thursday, May 13, 2021

- Building the Talent in your Lab: Comprehensive and Timely Team Training
- Mastering Oocyte Vitrification and Warming
- Mastering ICSI for a New Level of Success
- Evolving Biopsy Techniques: Multiple Maneuvers to Become a Master

■ Disparities within Reproductive Medicine: Sex, Age, Ethnicity, and Culture - Friday, May 14, 2021

- The Sixth Vital Sign: What Sperm Are Trying to Tell Us
- Age and Infertility
- Impact of Culture and Ethnicity
- Family Building Challenges for the LGBTQ+ Community
- **Keynote:** What Makes a Male – a Y Chromosome Story
- **Keynote:** CRISPR Based Genome Editing – Any Prospect for PGT?
- Legal Developments Impacting ART

■ Sperm Matters - Saturday May 15, 2021

- Mastering the Paradigm Shift: Anonymous to Disclosed Donors
- Optimizing Sperm Extraction for ART Success
- Defects in Spermatogonia: Can We Rescue Male Infertility?

■ Oral Abstracts • Poster Session



Downtown Austin

Preliminary Symposium Schedule

Thursday, May 13, 2021

7:30 a.m.-7:00 p.m.

Friday, May 14, 2021

7:30 a.m.-6:15 p.m.

Saturday, May 15, 2021

7:45 a.m.-12:15 p.m.



AT&T Hotel and Conference Center

View the detailed preliminary [schedule of events](#)

**Call for Abstracts: \$250 Cash Prizes to be Awarded for Best Abstracts Submitted
Conference Registration Scholarships for 2021 CRB Symposium**

Details on back...

Share what you have learned with your colleagues, and you may win \$250!

Make plans now to submit an abstract for oral presentation or for the poster session at AAB's Educational Conference and CRB Symposium, May 13-15, 2021, at the AT&T Hotel and Conference Center in Austin, Texas. Authors are encouraged to submit titles and abstracts for consideration in Assisted Reproductive Technology or Traditional Laboratory (chemistry, microbiology, hematology, immunology, molecular diagnostics, environmental, public health).

All abstracts submitted are eligible for consideration for one of two \$250 cash prizes.

Abstracts for oral presentation are limited to assisted reproductive technology. Abstracts for poster presentations will be accepted in the areas of assisted reproductive technology and the traditional laboratory. AAB/CRB membership is not a requirement for submitting an abstract. There is no limit to the number of abstracts you may author. However, the first author or person submitting an abstract(s) must register for the Conference/Symposium and be present during presentations and/or the poster session. Oral abstract presentations are tentatively scheduled for Friday afternoon, May 14. The poster session will be held on Friday evening, May 14.



Texas State Capitol

Submit your abstract [online](#) or contact LeAnn Hampton by email: HamptonL@aab.org or call 1-314-241-1445.

Mike Muzzillo Educational Conference Scholarships for Young Scientists and Technologists

AAB's Mike Muzzillo Educational Conference Scholarship Program was established to assist young scientists/technologists to be active in the AAB/CRB. Recipients will receive a financial award that pays some or all of each recipient's registration fee associated with attending the 2021 AAB Conference/CRB Symposium. The Mike Muzzillo Educational Conference Scholarships are made available through the generosity of AAB members.

Applicants must complete the online application, attach a current CV, and, if applicable, attach an abstract. Applications must be submitted by March 25, 2021, to be eligible for the 2021 AAB Conference/CRB Symposium. Awardees will be notified by April 1, 2021. Awardees who have previously registered for the 2021 Conference/Symposium will receive a refund of their registration fee (not to exceed the full AAB Conference/CRB Symposium early bird registration fee).

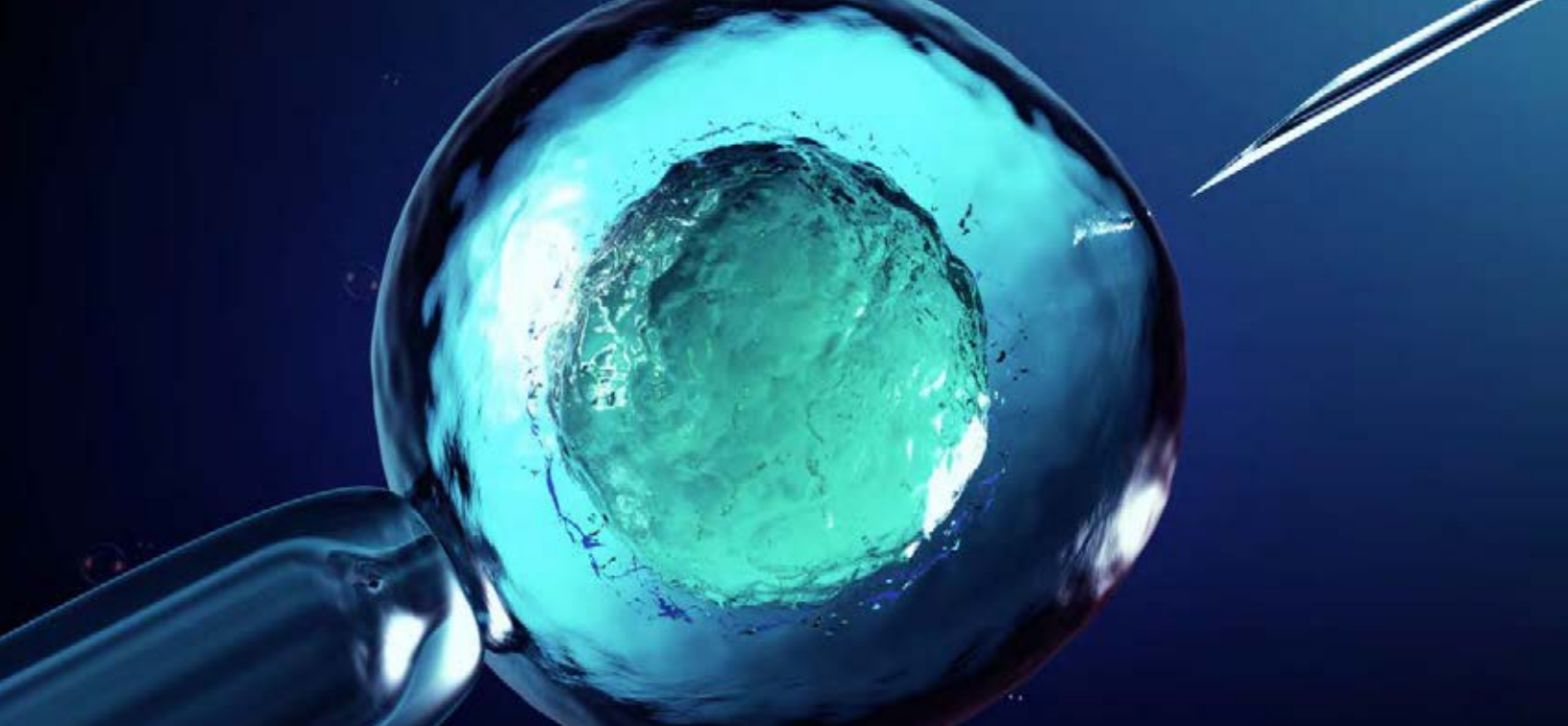
[Click here](#) to complete the online application. If you have any questions, contact the AAB office by email: aab@aab.org or telephone: 1-314-241-1445.

AT&T Hotel and Conference Center

The 2021 AAB Educational Conference and 25th Annual CRB Symposium are being held at the AT&T Hotel and Conference Center, 1900 University Avenue, Austin, TX 78705. Located on the University of Texas campus, the AT&T Hotel and Conference Center is situated in a culturally rich and innovative neighborhood and just minutes from the center of Downtown Austin. A variety of restaurants, shops and museums are nearby. Sleeping rooms offer scenic views of the Texas Capitol, University of Texas campus, or interior courtyard and feature flexible workspace, a mini-refrigerator, complimentary Wi-Fi, flat screen TV, and in-room iPad with local information.

Hotel Reservations

The AAB/CRB group rate is \$215 per night, single or double occupancy, plus applicable surcharge and tax. Guest-room rates are good three (3) days pre and post meeting dates. Make your hotel reservations [online](#) or by calling reservations toll-free at 1-877-744-8822. When calling direct, be sure to mention that you will be attending the AAB Conference/CRB Symposium.



Insurance Program for IVF Clinics & Laboratories

Sallop Insurance Inc. is an industry leader in crafting insurance coverage for various Miscellaneous Healthcare Facilities, particularly in the field of **Reproductive Medicine**. Sallop understands the unique exposures of the ART industry, and the evolving risks and services that are provided. We know how significant the work you do is, and if you are involved in a claim you need to have comprehensive insurance to supply sufficient funds for defense and settlement (up to the policy limits), so that you and your facility do not suffer a large financial loss.

Sallop has created a **Professional/General Liability** policy tailored to the unique exposures and risks associated with the ART community. The **Professional Liability** is designed to cover claims alleging negligence in the rendering of, or the failure to render professional services (*included but not limited to* the work being done in the lab). The **General Liability** insurance is protection against liability claims for bodily injury (BI) and property damage (PD) arising out of premises, operations, products, and completed operations; and advertising and personal injury (PI) liability.

Program Limits & Features:

Professional Liability (Claims Made)

\$1MIL Each Claim / \$3MIL Aggregate

General Liability (Occurrence)

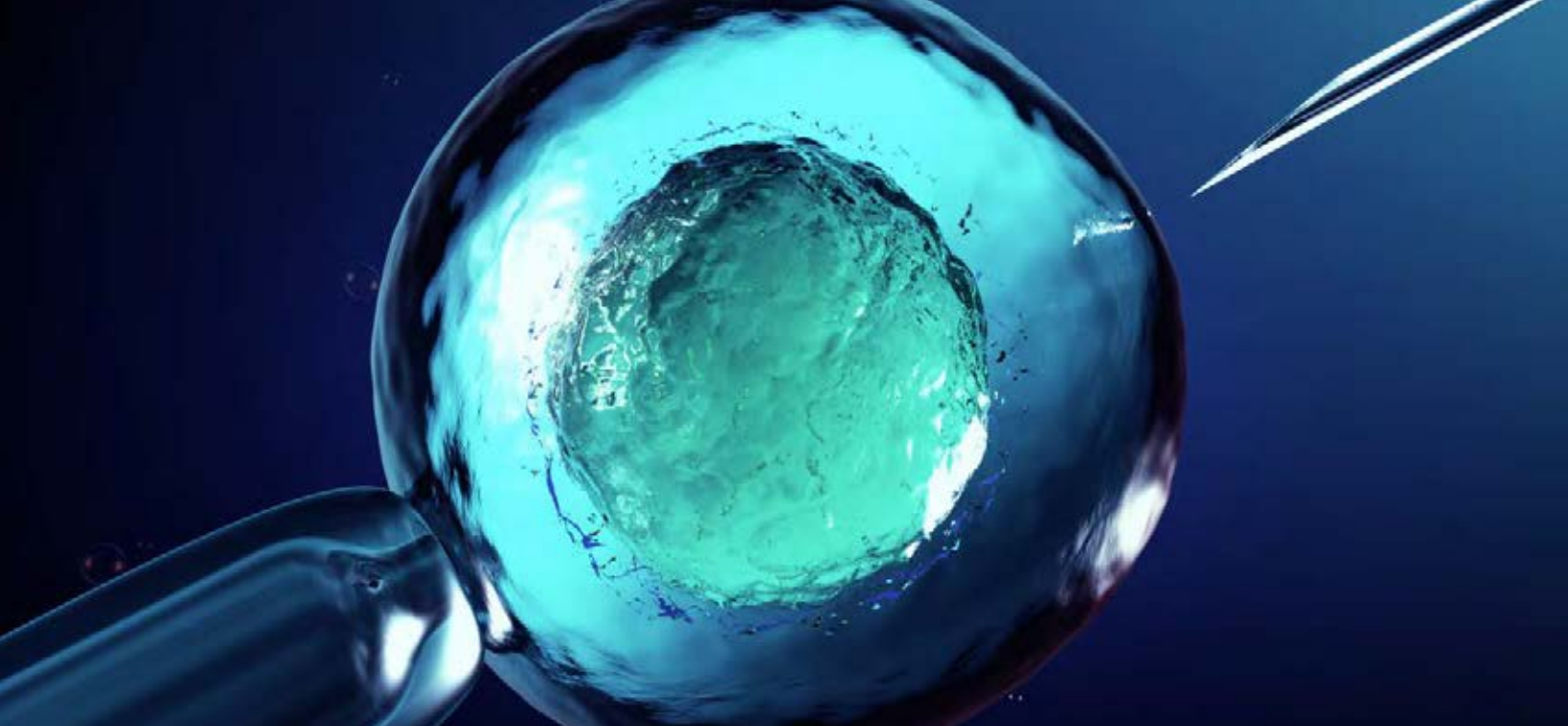
\$1MIL Per Occurrence / \$3MIL Aggregate

Features

- Full Consent to Settle
- Deductible is indemnity only
- Punitive Damages (where insurable by law)
- Blanket Contractual Liability for all insuring agreements (reduces need for midterm contractual endorsements)
- Broad Definition of Who is an Insured including Medical Directors, Students and Volunteers
- Good Samaritan Coverage

SALLOP
Insurance Brokerage ■ Risk Mitigation ■ Special Risks

For more information please visit us at
sallop.com or contact us directly:
(P) 617-488-6600
info@sallop.com



Additional Insurance Coverage Considerations:

Property insurance does not only apply to building owners. This coverage is purchased by many IVF Clinics for their personal property such as equipment, supplies and computers.

Business Income and Extra Expense will cover the loss of income sustained during a suspension of operations at your premises due to a covered cause of loss.

Embryos in Storage coverage is designed to reimburse patients to cycle again, in the event that their embryos/oocytes/sperm in your care/custody/control are accidentally damaged/destroyed.

Cyber liability insurance will protect personally identifiable information, as well as confidential information, in paper or electronic format. This coverage offers up to a \$1MIL Limit for a breach in electronic healthcare records.

EPLI (Employment Practices Liability Insurance) covers businesses against claims by workers that their legal rights as employees of the company have been violated. EPLI provides protection against many kinds of employee lawsuits, including claims of: Sexual Harassment, Discrimination, Wrongful Termination, Wrongful Discipline, Deprivation of Career Opportunity and Mismanagement of Employee Benefit Plans.

Umbrella insurance allows a business to purchase additional limits to sit above their other liability coverages. Given the recent losses in your industry due to tank failures and loss of embryos this coverage will give you additional limits in the event that the standard policy limits are not enough to cover a large loss or lawsuit.

To obtain a full list of all coverage considerations for ART Facilities and Laboratories,
please contact Sallop at info@sallop.com.



American Association of Bioanalysts (AAB) Insurance Program



Sallop Insurance Inc. and the **American Association of Bioanalysts (AAB)** collaborated to create an insurance program offered exclusively to AAB members. As the number of claims in your industries continue to rise, there is a growing need for individuals **working in the lab** to purchase their own insurance policy. While most individuals may be covered under their employer's policy, that policy may not carry sufficient limits to cover all employees in the event of a large lawsuit.

The intent of this policy is to provide coverage to you as an individual for the *Professional Services* you are providing. If you are involved in a claim you need to have comprehensive insurance in place, **that supplies adequate funds for defense and settlement (up to the policy limits)**, so that you do not suffer a financial loss.

Coverage will be available (but not limited to) the following certifications: High Complexity Laboratory Directors (HCLD), Bioanalyst Clinical Laboratory Director (BCLD), Public Health Laboratory Director (PHLD), Embryology Laboratory Director (ELD), Embryology Laboratory Scientist (ELS), General Supervisor (GS), Embryologist, Andrology Laboratory Director (ALD), Clinical Consultant (CC), Technical Supervisor (TS), Andrology Laboratory Scientist (ALS), Medical Technologist (MT), Medical Laboratory Technician (MLT), and Molecular Diagnostic Technologist (MDxT).

Policy Limits & Features:

Professional Liability (Claims Made)

\$1MIL Each Claim / \$3MIL Aggregate

General Liability (Occurrence)

\$1MIL Per Occurrence / \$3MIL Aggregate

Additional Coverage

Offerings available:

Cyber Liability, Sexual Misconduct,
Billing Error Supplementary Payments,
& Extended Reported Period

In order to obtain a quote please visit
www.sallop.com and complete the
information listed under the
[AAB Members Tab](#).

For more information please visit us at
sallop.com or contact us directly:

(P) 617-488-6600

info@sallop.com



**SAVE \$\$\$ ON
PROFICIENCY TESTING**



906 Olive Street, Suite 1200 • St. Louis, Missouri 63101-1448 • Phone: (314) 241-1445 • Fax: (314) 241-1449
Email: crb-aab@aab.org • Web: www.aab-pts.org

See how much AAB's PTS can save your lab!

Analyte	AAB	CAP
1. Chemistry, Comprehensive (hCG, TSH, TT3, TT4, FT4) 5 Challenges per testing even	\$302	*
2. Fertility Endocrinology (DHEA-S, E2, FSH, LH, PGN) Challenges per testing event	\$217	*
3. Special Chemistry (PRL, FT3, Testosterone) 2 Challenges per testing event	\$206	*
4. Ligand Assay General (hCG, TSH, FT3, FT4, TT3, TT4) 5 Challenges per testing event, 2 testing events	**	\$495
5. Ligand Assay Special (DHEA-S, E2, FSH, LH, PGN, PRL, Testosterone) 3 Challenges per testing event, 2 testing events	**	\$416
6. Sperm Count Manual Both have 2 Challenges per testing event	\$281	\$278
7. Sperm Morphology Both have 2 prepared slides for staining, AAB also includes WSI's for analysis	\$281	\$270
8. Sperm Viability Both have 2 Challenges per testing event, Glass & WSI's	\$281	\$408
9. Antisperm Antibody IgG Both have 2 Challenges per testing event	\$260	\$270
10. Embryo Grading Video - Digital	\$290	\$442
11. Sperm Motility Video - Digital CAP includes count	\$292	\$362
12. Sperm Morphology WSI - Digital	Included in AAB Sperm Morphology (See above)	\$270
TOTAL COST:	\$2410	\$3211

AAB PTS programs are approved by CLIA, COLA and JCAHO and are accepted by the CAP.

Analytes accepted by the CAP are hCG (serum), Estradiol, FSH, LH, Progesterone, Prolactin, Testosterone, Antisperm Antibody, Sperm Count (qualitative), and Sperm Viability.

* These three modules are not offered by the CAP. To obtain these analytes, you must order modules 4 and 5.

** These two modules are not offered by AAB PTS. To obtain these analytes you must order modules 1, 2, and 3.



2021 Programs

AAB Proficiency Testing Service Programs 2021 CLIA '88 – Approved Programs

Acid Fast Smears
Activated Clotting Time (ACT), 2 vial
Activated Clotting Time (ACT), 5 vial
Adulterated Urine
Advanced Hematology w/ Manual Diff
Alcohol
Ammonia
Amniotic Fluid
Antibody Elution
Antibody Titer
Antimicrobial Susceptibility, Supplemental
Antinuclear Antibody (ANA)
Antisperm Antibody
Anti-streptolysin O (ASO)
Bacteriology
Bacteriology, Complete
Basic Hematology w/ Manual Diff
Bilirubin, supplemental, 2-vial
Bilirubin, supplemental, 5-vial
Blood Cell Identification
Blood Culture, add-on
Blood Gases
Body Fluid Count (NRBC/RBC)-Streck
Body Fluid Microscopy (DigitalScope) Formed Elements Only
Body Fluids, Automated
Body Fluids, Manual
C. Difficile Toxin Antigen, 2-vial supplemental
C. Difficile Toxin Antigen, 5 vial
Campyloacter Antigen, 2 vial, 2 event supplemental
Candida Culture
Cardiac Markers
Cardiac Markers, 2-vial
Chemistry, Basic
Chemistry, Comprehensive
Chemistry, i-STAT waived
Chemistry, i-STAT, non-waived
Chemistry, Special
Chemistry, Urine
Chemistry, waived
Chemistry/Microscopy, Body Fluids
Chlamydia
Chlamydia, 2-vial supplemental
Chlamydia/CG/Strep Group B Antigen Screen
Cholesterol Certification
Circulating Tumor Cells (CTC)
Clinical Microscopy
CoaguChek XS/XS Plus, Basic
CoaguChek XS/XS Plus, Comprehensive
Coagulation, Plasma
Colony Count, Urine
C-Reactive Protein (CRP)
C-Reactive Protein, high sensitivity (hs-CRP)
Cryptococcal Antigen
Cryptosporidium/Giardia Immunoassay

Cryptosporidium/Giardia Immunoassay, 2-vial supplemental
Cryptosporidium/Giardia/E.histolytica Immunoassay
Cystatin C
D (Rh) Typing Only
D-dimer
Diagnostic Immunology
Direct Antiglobulin Test (DAT)
Drug Monitoring, Therapeutic
Drug Monitoring, Therapeutic, Unbound
Drug Screen, Urine
eGF Monitoring
Embryo Grading
Erythrocyte Sedimentation Rate (ESR)
Erythrocyte Sedimentation Rate (ESR), Rapid
Fecal Lactoferrin
Fertility Endocrinology
Fetal Fibronectin (fFN)
Fetal Membrane Rupture Test
Fetal RBC
Fructosamine
Genital Culture
Genital Culture, add-on
Glucose & Hemoglobin, Hemocue, 5 vial
Glucose & Hemoglobin, Hemocue, waived
Glycohemoglobin, 2 vial
Glycohemoglobin, 5 vial
Gram Stain
Gram Stain, Supplemental, Bacteriology Complete
H. Pylori Antibody
Hematology w/Diff A
Hematology w/Diff B
Hematology w/Diff C
Hematology w/Diff D
Hematology w/Diff E
Hematology w/Diff G
Hemoglobin & Hematocrit
Hemoglobin & Hematocrit, waived
Hemoglobin A1C, Afinion
Hepatitis Markers
HIV Antibodies, Oral Fluid
HIV Markers, Rapid/Waived
HIV Markers
Immunoassay, 2 vial
Immunochemistry
Immunohematology, Basic
Immunohematology, Comprehensive
Immunohematology, Comprehensive, Automated
Immunohematology, Comprehensive, Plus
Immunoproteins
India Ink Preparation
Iron Binding
IVF Embryo Culture Media
KOH Preparation

Lead, Blood, waived
Legionella
Lipids
Lyme Disease
Microalbumin/Creatinine, Urine
Mononucleosis, Infectious
Mononucleosis, Infectious, Waived
MRSA
Mycology Culture
Mycoplasma Antibody, 2-vial add-on
Occult Blood, Fecal
Occult Blood, Gastric
Oximetry, Blood
p2PSA
Parasitology
Pregnancy, Serum/Urine
Pregnancy, Urine, Waived
Preimplantation Genetic Screening
Procalcitonin
Prothrombin Time, WB
Provider Performed Microscopy
Reticulocytes
Reticulocytes for Sysmex
Rheumatoid Factor
Rotavirus, 2 vial supplemental
Rotavirus, 5 vial
Rubella
Sensitivity, Supplemental
S. pneumoniae Antigen
SHBG & Testosterone
Shiga Toxin
Sickle Cell Screen
Sperm Count
Sperm Morphology
Sperm Motility
Sperm Viability
Step Group A, Antigen Screen
Step Group A, Antigen Screen, waived
Sweat Analysis
Syphilis Serology
Throat Culture
Throat/Urine Culture
ToRCH
Tumor Markers
Urease, Rapid (CLO Test)
Urinalysis
Urinalysis Sediment
Urinary Eosinophils (DigitalScope)
Urine Culture
Vaginosis (Affirm Microbial) Screen
Viral Antigen Screen
Viral Antigen Screen, Waived
WB Glucose, Basic
WB Glucose, Basic-EQAS (Multi-site)
WB Glucose, Comprehensive

New Programs for 2021:

**SARS-CoV-2 Molecular Assay
SARS-CoV-2 Serologic Assay**

AAB-PTS 2021 CAP Accepted Analytes

Analyte	Program	CMS Regulated	CAP Accepted	Section	Shipment
Antisperm Antibody	Antisperm Antibody		CAP	Emb/And	Emb/And
Pregnancy, Serum Qualitative	Chemistry, Basic	CMS	CAP	Chemistry	Chemistry
hCG Test, Serum Quantitative	Chemistry, Comprehensive	CMS	CAP	Chemistry	Chemistry
Thyroid Stimulating Hormone (TSH)	Chemistry, Comprehensive	CMS	CAP	Chemistry	Chemistry
Embryo Grading	Embryo Grading		NR	Emb/And	Emb/And
DHEA-S	Fertility Endocrinology		CAP	Chemistry	Chemistry
Estradiol	Fertility Endocrinology		CAP	Chemistry	Chemistry
Follicle Stimulating Hormone (FSH)	Fertility Endocrinology		CAP	Chemistry	Chemistry
Luteinizing Hormone (LH)	Fertility Endocrinology		CAP	Chemistry	Chemistry
Progesterone	Fertility Endocrinology		CAP	Chemistry	Chemistry
Fetal Fibronectin (fFN)	Fetal Fibronectin (fFN)		CAP	Emb/And	Emb/And
Fetal Membrane Rupture (PAMG-1)	Fetal Membrane Rupture Test		NR	Emb/And	Emb/And
IVF, Human Sperm Cell Survival, Media Acceptability	IVF Embryo Culture Media		NR	Emb/And	Emb/And
IVF, Mouse Embryo, Media Acceptability	IVF Embryo Culture Media		NR	Emb/And	Emb/And
Sperm Count, Qualitative (Post Vasectomy)	Sperm Count		NR	Emb/And	Emb/And
Sperm Count, Quantitative	Sperm Count		CAP	Emb/And	Emb/And
Sperm Morphology, %	Sperm Morphology		NR	Emb/And	Emb/And
Sperm Morphology, Cell ID	Sperm Morphology		NR	Emb/And	Emb/And
Sperm Motility	Sperm Motility		NR	Emb/And	Emb/And
Sperm Motility, Forward Progression %	Sperm Motility		NR	Emb/And	Emb/And
Sperm Motility, Forward Progression, semi-quantitative	Sperm Motility		NR	Emb/And	Emb/And
Sperm Viability	Sperm Viability		CAP	Emb/And	Emb/And
Sperm Viability, Digital Slide Image	Sperm Viability		CAP	Emb/And	Emb/And

Board Certification for Bench Level Andrologists and Embryologists

Apply for your **Andrology Laboratory Scientist (ALS)** or **Embryology Laboratory Scientist (ELS)** certification.

You can qualify for ALS(AAB) or ELS(AAB) certification with a Bachelor's or Associate's Degree with a major in Biology, Chemistry, Biochemistry or Medical Technology.

ALS(AAB) and ELS(AAB) certifications are available to qualified individuals through the American Association of Bioanalysts' Board of Registry (ABOR), a nationally recognized not-for-profit certifying board for andrology laboratory scientists, embryology laboratory scientists, medical technologists, molecular diagnostics technologists, and medical laboratory technicians.



Bench level andrologists and embryologists who are considering certification and/or are working to advance their level of certification, are encouraged to consider ALS or ELS certification as an option to the American Board of Bioanalysis (ABB) Technical Supervisor (TS) certification. ABB's Technical Supervisor (TS) examinations are very challenging, especially for a "bench" andrologist/embryologist. The ALS and ELS certifications are excellent initial certifications for andrologists and embryologists. As ALSs and ELSs gain more experience and responsibility, they can apply to upgrade to ABB's Technical Supervisor certification.

ALS and ELS examinations are approved for Florida licensure.



Telephone: (314)241-1445 • Email: abor@aab.org • Visit the [ABOR Website](http://www.abor.org)

The **American Board of Bioanalysis (ABB)**, an internationally recognized not-for-profit certifying board established in 1968, evaluates and identifies, on a nondiscriminatory basis, individuals who meet ABB's minimum requirements of competency and who can establish their competency to perform as clinical laboratory directors, consultants and supervisors.

ABB certification is available by examination in these disciplines:

- Andrology
- Chemistry
- Diagnostic Immunology
- Embryology
- Hematology
- Microbiology
- Molecular Diagnostics
- Public Health Microbiology

ATTENTION VETERANS: EXAM FEE REIMBURSEMENT AVAILABLE UNDER G.I. BILL

ABB examination fees for Directors (BCLD, HCLD, PHLD, ELD) and Technical Supervisors (TS) are approved for reimbursement under the G.I. Bill. For more information, visit www.abbcert.org or call (314)241-1445 and ask for Tina Huelsing.



Federal (CLIA '88) and state regulatory programs recognize ABB's director certification.

Apply online at www.abbcert.org. Processing of ABB applications for board review requires six to eight weeks.

Public Health Microbiology Specialty for Directors and Supervisors

ABB, working in conjunction with the Association of Public Health Laboratories (APHL), is offering a board certification in Public Health Microbiology. This new certification gives doctoral-level scientists and technical supervisors in public health laboratories a means to qualify for certification under CLIA, which establishes the qualifications for non-physician directors of medical and public health laboratories that conduct high complexity testing.

ABB Certification is Available for:

- **Bioanalyst Clinical Laboratory Director (BCLD)** - A generalist laboratory director who has technical experience in a minimum of three major clinical laboratory disciplines.
- **High-complexity Clinical Laboratory Director (HCLD)** - A laboratory director who has expertise in high complexity testing in at least one clinical lab discipline or specialty.
- **Public Health Laboratory Director (PHLD)** - A laboratory director who has expertise in high complexity testing in Public Health Microbiology.
- **Andrology Laboratory Director (ALD)** - A laboratory director who has expertise in the specialty of assisted reproductive technology (ART) laboratory procedures in an andrology laboratory.
- **Embryology Laboratory Director (ELD)** - A laboratory director who has expertise in the specialty of assisted reproductive technology (ART) laboratory procedures in an embryology laboratory.
- **Clinical Consultant (CC)** - A clinical consultant provides consultation to the clients of a laboratory performing moderate or high complexity testing regarding the appropriateness of the testing ordered and interpretation of test results.
- **Technical Supervisor (TS)** - A technical supervisor is responsible for the technical and scientific oversight of a laboratory performing high complexity testing.

For a list of ABB's examination dates, visit www.abbcert.org

NEW 2020 Andrology & Embryology Online Courses Now Available

SAVE UP TO 20%* OFF REGULAR PRICES for subscriptions to all modules!

Enroll today to help study for certification examinations, earn contact hours to satisfy ABB/PEER or state continuing education requirements, train for an embryology or andrology laboratory position, or to update and add to your knowledge of the field. The courses were recorded live in January 2020 and represent a significant update to the popular A&E online courses from 2017. The new online courses are mobile-friendly and compatible across browsers and devices.

SELECT BY MODULE:	Contact Hours	Regular Member Price	Discounted Member Price	Regular Nonmember Price	Discounted Nonmember Price
2020 A&E Online Review Full Module: Includes all Individual Courses listed on the back of this sheet. IMPORTANT: A separate module covering Embryology alone is not available because the subject of Embryology includes a significant number of Andrology topics. The combined 2020 A&E Online Review Full Module is recommended for Embryology examination study and/or review.	34.0	\$1,640.00	\$1,312.00 Members SAVE \$1,008! <i>Includes a \$680 savings off the nonmember price plus \$328 (a 20% discount) off the member price.</i> <i>Use coupon code AE2020 when ordering to receive discount.</i>	\$2,320.00	\$1,856.00 Nonmembers SAVE \$464! <i>Join AAB and save \$1,008 off your order!</i> <i>Use coupon code AE2020 when ordering to receive discount.</i>
2020 Andrology Online Review Module: <ul style="list-style-type: none"> Male Reproductive Function – Development of Male Genitourinary Tract and Birth Defects and Spermatogenesis and Male Reproductive Tract Biology Male Reproductive Function – Male Infertility Semen Analysis Tests of Sperm Function Male Gamete Preparation for ART Cryopreservation of Reproductive Cells and Tissues Reproductive Genetics; Contemporary Genetic Screening – PGT-M, PGT-SR and PGT-A General Laboratory Management (Parts 1 and 2) Clinical Laboratory Improvement Amendments (CLIA '88) Occupational Safety and Health Act (OSHA) 	21.0	\$950.00	\$855.00 Members SAVE \$285! <i>Includes a \$190 savings off the nonmember price plus \$95.00 (a 10% discount) off the member price.</i> <i>Use coupon code ONLINE2020 when ordering to receive discount.</i>	\$1,140.00	\$1,026.00 Nonmembers SAVE \$114! <i>Join AAB and save \$285 off your order!</i> <i>Use coupon code ONLINE2020 when ordering to receive discount.</i>
2020 Laboratory Management Online Review Module: <ul style="list-style-type: none"> General Laboratory Management Parts 1 and 2 Clinical Laboratory Improvement Amendments (CLIA '88) Occupational Safety and Health Act (OSHA) 	6.50	\$455.00	\$409.50 Members SAVE \$175.50! <i>Includes a \$130 savings off the nonmember price plus \$45.50 (a 10% discount) off the member price.</i> <i>Use coupon code ONLINE2020 when ordering to receive discount.</i>	\$585.00	\$526.60 Nonmembers SAVE \$58.40! <i>Join AAB and save \$175.50 off your order!</i> <i>Use coupon code ONLINE2020 when ordering to receive discount.</i>

**Because of the economic hardship brought on by the COVID-19 pandemic, A&E online course pricing will be discounted as of May 28, 2020, and will continue until further notice.*

OVER

You may also subscribe to individual topics:

2020 A&E Online Review – Individual Courses	Contact Hours	Member Price	Nonmember Price
• Female Reproductive Physiology, Oogenesis and Infertility	2.5	\$275.00	\$387.50
• Fertilization and Early Embryo Development	1.5	\$165.00	\$232.50
• Ovulation Induction for ART	1.0	\$110.00	\$155.00
• Male Reproductive Function – Development of the Male Genitourinary Tract and Birth Defects	1.0	\$110.00	\$155.00
• Male Reproductive Function – Spermatogenesis and Male Reproductive Tract Biology	2.0	\$220.00	\$310.00
• Male Reproductive Function – Male Infertility	1.0	\$110.00	\$155.00
• Semen Analysis	2.0	\$220.00	\$310.00
• Tests of Sperm Function	1.5	\$165.00	\$232.50
• Male Gamete Preparation for ART	1.5	\$165.00	\$232.50
• Micromanipulation in ART	1.5	\$165.00	\$232.50
• Culture Techniques	2.5	\$275.00	\$387.50
• Embryo Selection for Transfer	2.0	\$165.00	\$232.50
• Contemporary Embryo Transfer Art and Science	1.0	\$110.00	\$155.00
• Cryopreservation of Reproductive Cells and Tissues	2.0	\$220.00	\$310.00
• Reproductive Genetics	2.0	\$220.00	\$310.00
• QC and QA in the ART Laboratory	1.5	\$165.00	\$232.50
• Contemporary Genetic Screening – PGT-M, PGT-SR and PGT-A	1.5	\$165.00	\$232.50
• General Laboratory Management Parts 1 and 2	3.0	\$330.00	\$465.00
• Clinical Laboratory Improvement Amendments of 1988 (CLIA '88)	2.0	\$220.00	\$310.00
• Occupational Safety and Health Act (OSHA)	1.5	\$165.00	\$232.50

NOTE: Individuals may purchase an online course as many times as they wish. However, continuing education credit (contact hours) will only be awarded once for any discipline/topic within a two-year recording period.

BONUS! Includes online quiz to supplement your study and review.

Enroll for the entire Online Andrology & Embryology Review Course and receive the hard copy 2020 *A&E Review Manual* **FREE!** Enroll for the Andrology Module or the Laboratory Management Module and receive a **FREE** hard copy of the corresponding text.

Earn up to 34.0 contact hours, which can be used to satisfy ABB/PEER continuing education requirements or to meet state continuing education requirements (including California, Florida, Louisiana, and Montana). **PLUS**, recording your contact hours is automatic if you are an AAB member or if you are ABB-certified. Upon successful completion of the quiz at the end of each section, your contact hours will be automatically entered into your AAB/ABB continuing education records.

Get started today! Visit the [AAB BOOKSTORE](#).

Reproductive BioMedicine Online

**Special Subscription Offer to
Reproductive BioMedicine Online**

**For Members of the AAB College of
Reproductive Biology**



We are excited to announce CRB's affiliation with the journal, [Reproductive BioMedicine Online](http://www.dbmonline.com), published by Elsevier Ltd. As a benefit of this affiliation, **Reproductive BioMedicine Online** is offering CRB members an annual online subscription price of \$80 US — **a savings of up to \$590 off the regular \$670 personal subscription price.**

Reproductive BioMedicine Online covers the formation, growth and differentiation of the human embryo. It is intended to bring to public attention new research on biological and clinical research on human reproduction and the human embryo including relevant studies on animals. It is published by a group of scientists and clinicians working in these fields of study. Its audience comprises researchers, clinicians, practitioners, academics and patients.

Context

The period of human embryonic growth covered is between the formation of the primordial germ cells in the fetus until mid-pregnancy. High quality research on lower animals is included if it helps to clarify the human situation. Studies progressing to birth and later are published if they have a direct bearing on events in the earlier stages of pregnancy.

How to Subscribe

To subscribe, contact Elsevier Journals Customer Service (attention: Society Department) by email: ussocieties@elsevier.com. Provide your full address details and request specifically the AAB-CRB member E-only price of \$80 for **Reproductive BioMedicine Online**. Customer Service will contact you with the option of receiving an invoice by email or paying by credit card via telephone.

You can also contact the Elsevier Customer Service Department by telephone or fax. Be sure to mention that you are taking advantage of the special \$80 subscription rate available to members of the College of Reproductive Biology.

Subscriptions within the United States, call or fax:

Phone: 1-877-839-7126

Fax: 1-314-447-8077

International subscriptions, call or fax:

Phone: 1-314-447-8871

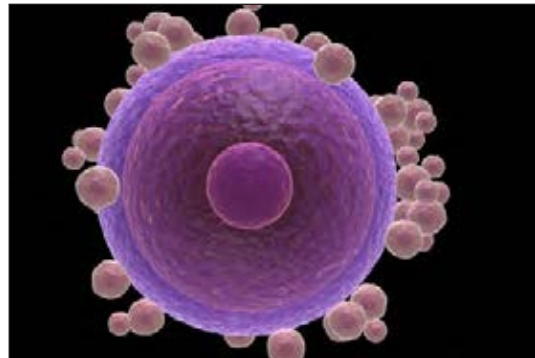
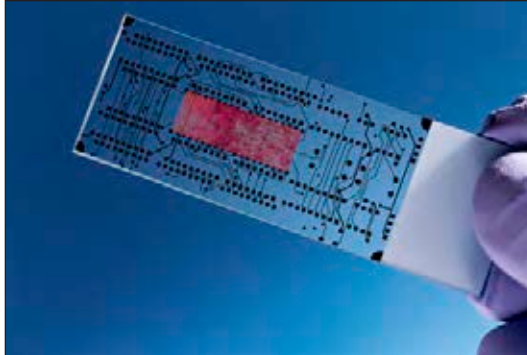
Fax: 1-314-447-8029

SAVE up to \$590 off the regular subscription price!

American Association of Bioanalysts

Catalog of Print and Online Educational Resources

Covering topics related to
Reproductive Biology Laboratories and
Traditional Clinical Laboratories



[View a complete list of print and online educational resources](#)