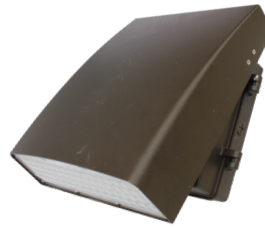




LED WALL PACK RETROFIT COST ANALYSIS/CASE STUDY



CONVENTIONAL WALL PACK LIGHTING SUFFERS FROM HIGH ENERGY COSTS, FREQUENT MAINTENANCE COSTS, AND OVERALL LIGHTING PERFORMANCE ISSUES. HOWEVER, AN LED RETROFIT CAN HELP MITIGATE ALL THREE OF THESE ISSUES. SEE EXAMPLE BELOW.

LED WALLPACK RETROFIT CASE STUDY

10 EXISTING 250 WATT WALL PACKS

**10-250 WATT HPS WALL PACKS
10 Hours a day @ .13 KWH**

\$1389 a year

10 NEW 80 WATT LED WALLPACKS

**10-80 WATT LED WALLPACKS
10 Hours a day @ .13 KWH**

\$379 a year

ANNUAL SAVINGS \$1,010.00

FOR A FREE COST ANALYSIS, CALL OR EMAIL

732-833-8086

WWW.NEWHORIZONLIGHTING.COM