

# Serious about FUN!



COMMERCIAL RECREATION SPECIALISTS |

Solutions from **Concept to Completion.** [CRS4Rec.com](https://CRS4Rec.com)

# TABLE OF CONTENTS

Master Planning . . . . . 1

Water-Based Family Entertainment Zones . . . . . 7

Splashpads . . . . . 13

Playgrounds . . . . . 19

Miniature Golf . . . . . 25

# Master Planning



# Town Park

## Rome, Wisconsin

With the goal of community enrichment, the Town of Rome has approved a multi-phase master plan submitted by CRS Design for the development of a town park that will feature a Splashpad. This plan also features a playground, sports area, open lawn space, elevated performance space and sidewalks that will be part of future plan phases.

This project and the initial phases were made possible by a grant from The Legacy Foundation who offered up to \$500,000 to Rome and other communities in the area to create Splashpads in central Wisconsin. The foundation focuses on improving the health and well-being of communities in the Wisconsin Rapids area.

**CRS DESIGN & COMMERCIAL RECREATION SPECIALISTS PROVIDED:**

- Complete Master Plan Development
- Design Consultation Services; Water Feature Selection; Flow-Through System Design & Engineering
- Water Feature & Flow-Through System Supplier
- Certified Start-Up & Training Services & Post-Installation Support

**PROJECT TYPE:** Master Plan  
**SIZE:** 5.5 Acres  
**TYPE:** Multi-Phased  
**COST:** \$500,000 (Phase I)  
\$1.9 Million (Total)

**CONTACT:** Mike Miller  
Administrator, Town of Rome  
715.325.8025

**STATUS:** Phase I To Be Completed in 2018



**Alpine Village**



**Arrowhead Golf Course**



**Lake Sherwood**



**Sand Valley Golf Course**





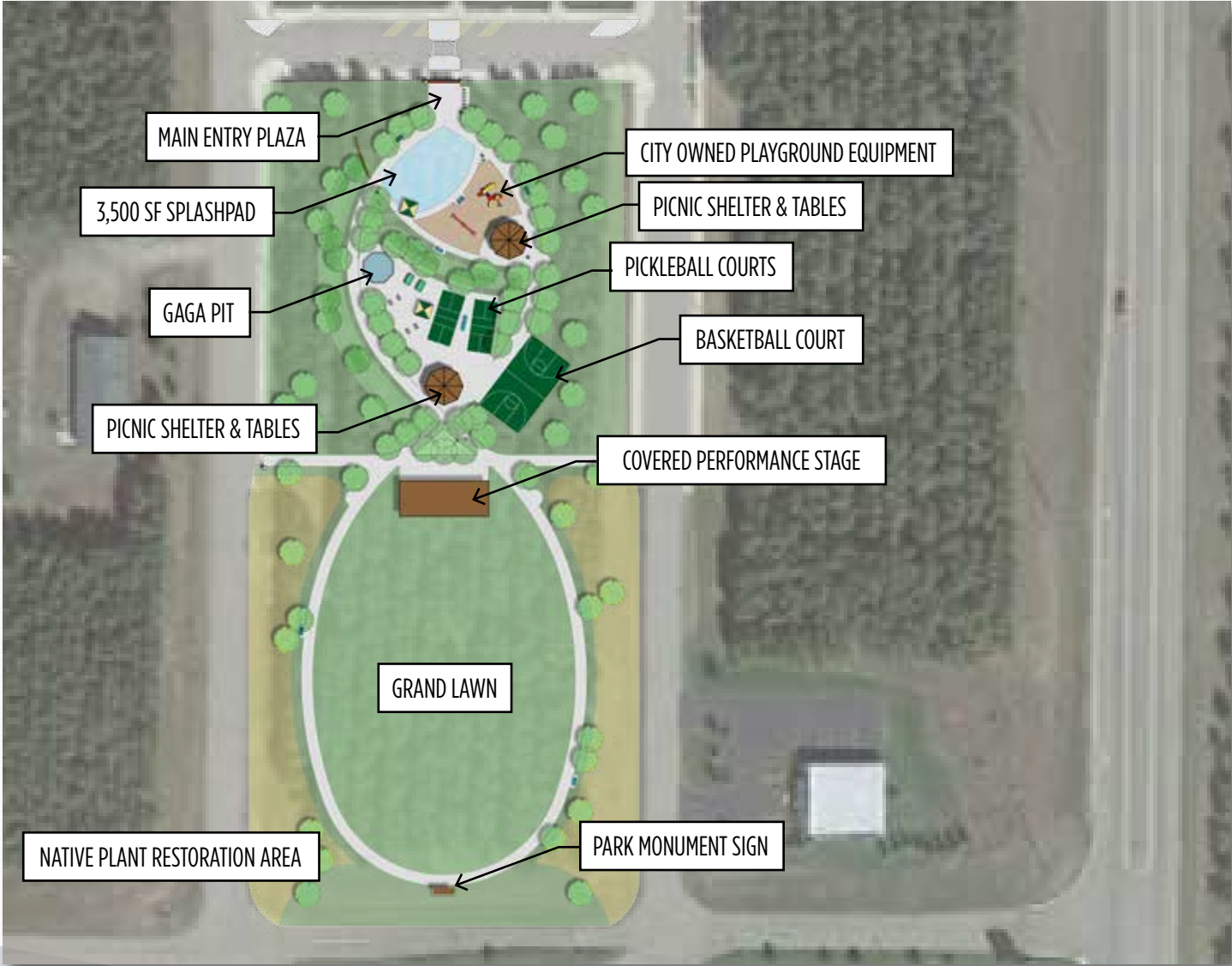
Satellite Image of Site



Sketch Layout of Concept

# Town Park

Rome, Wisconsin



**Covered Stage Example**



**Picnic Shelter**



**Gaga Pit**



**Native Planting**



**Pickleball Court**





**Splashpad Example**



**Dumping Bucket**



**Aquadome**



**Flower No 5**

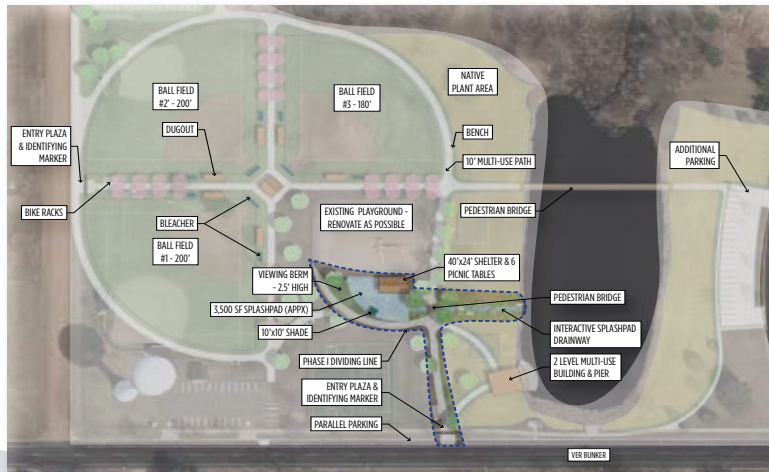


# Ripple Creek Park

Port Edwards, Wisconsin

The Village of Port Edwards has approved a master plan submitted by CRS Design for the improvement of Ripple Creek Park. The plan features a 3,500 square foot Splashpad with an interactive drainway and a new shelter with picnic space to that will accentuate the existing ball fields and playground.

This project was made possible by a grant from The Legacy Foundation who offered up to \$500,000 to Port Edwards and other communities in the area to create Splashpads in central Wisconsin. The foundation focuses on improving the health and well-being of communities in the Wisconsin Rapids area.

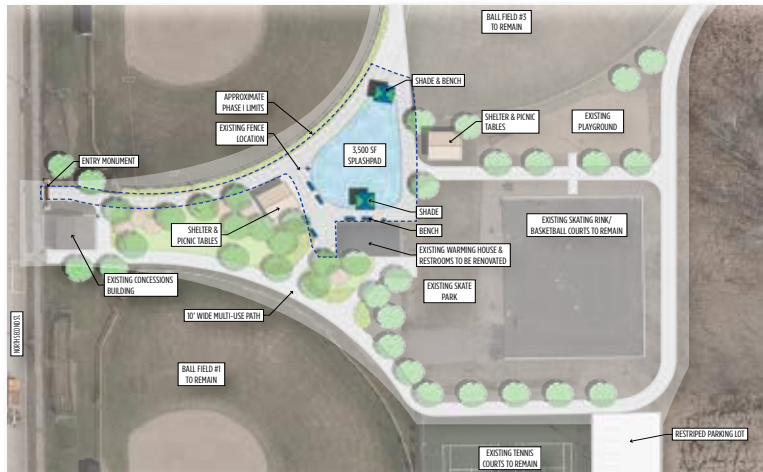


# Kautzer Recreation Plaza

Nekoosa, Wisconsin

To continue community enrichment, the City of Nekoosa has accepted a master plan submitted by CRS Design for the improvement of the Kautzer Recreation Plaza. The plan features a new 3,500 square foot Splashpad that will accentuate the existing ball fields and playground.

The Legacy Foundation offered up to \$500,000 in the form of a grant to Nekoosa and other communities in the area to create Splashpads in central Wisconsin. The foundation focuses on improving the health and well-being of communities in the Wisconsin Rapids area.





# Water-Based Family Entertainment Zones

# Camp Crosley

North Webster, Indiana

Growing populations around the lake brought various pollutants and irritants that made water quality unpredictable. With beach closures always a possibility, changes to their waterfront program were inevitable. The experts at CRS suggested a purpose-built “pond” that would take advantage of roughly nine acres of land from an under-utilized field. It would essentially be built as a membrane-lined pool, easily adaptable for recreational use as an aquapark. Excavation for the pond would create a 3-acre water feature including a cable wake park, beach and dozens of water inflatables. Displaced soil would allow for twin suspended water slides and a hillside Zoom Floom to feed into the pond. To the north would be a beach volleyball court, jumping pillow, and pedal track. In other words, the H2Whoa! Zone would become part of a complete water-based family entertainment center.

**COMMERCIAL RECREATION SPECIALISTS PROVIDED:**

- Design Consultation Services; Pond Design; Master Plan
- Inflatable Water Products Supplier
- On-Site Construction and Supervision
- Post-Installation Support

**PROJECT TYPE:** H2Whoa! Zone  
**SIZE:** 9 Acres  
**COST:** \$1,000,000

**CONTACT:** Richard Armstrong  
Executive Director  
574.834.2331

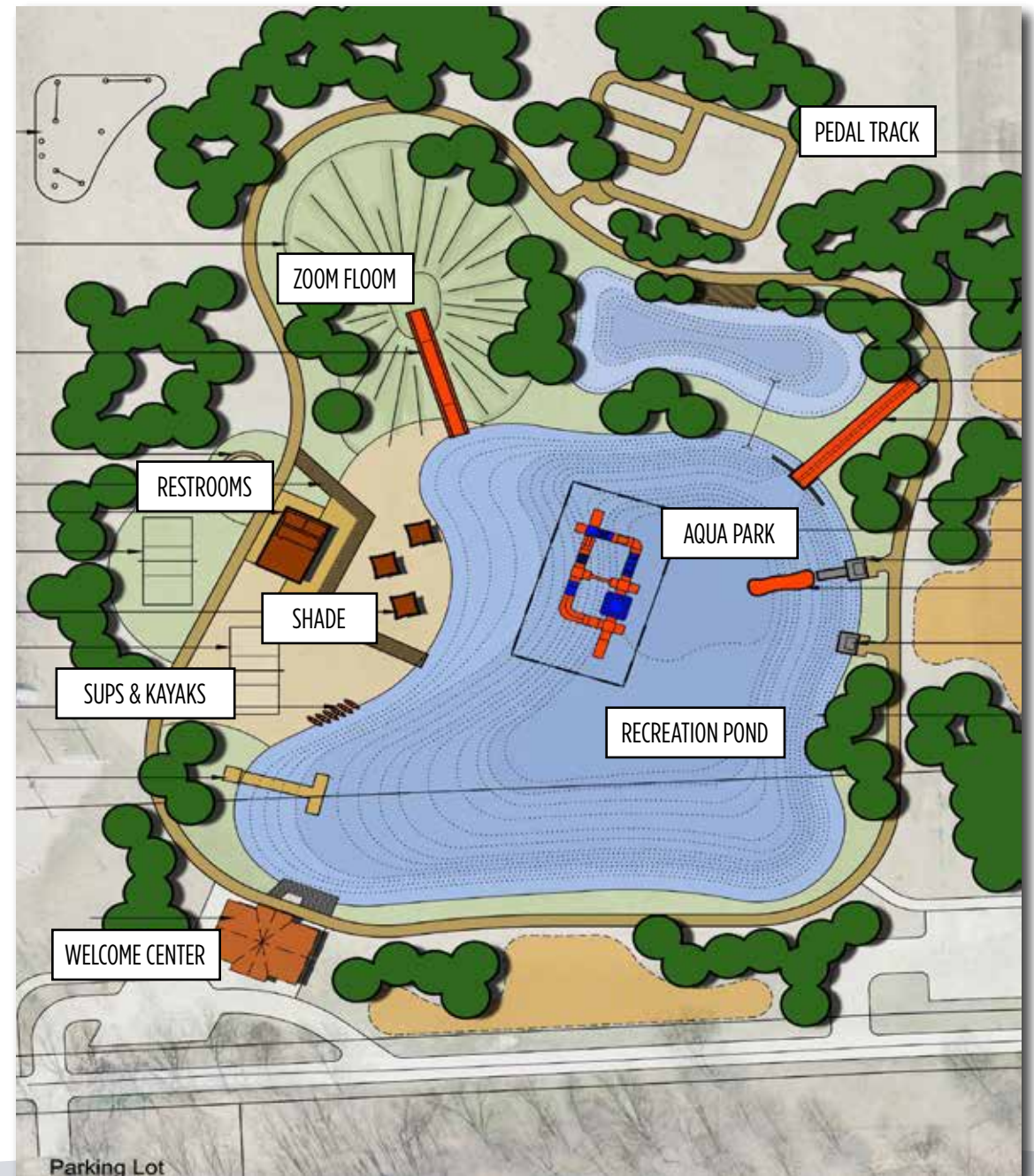
**STATUS:** Completed in Summer 2015







**Satellite Image of Site**

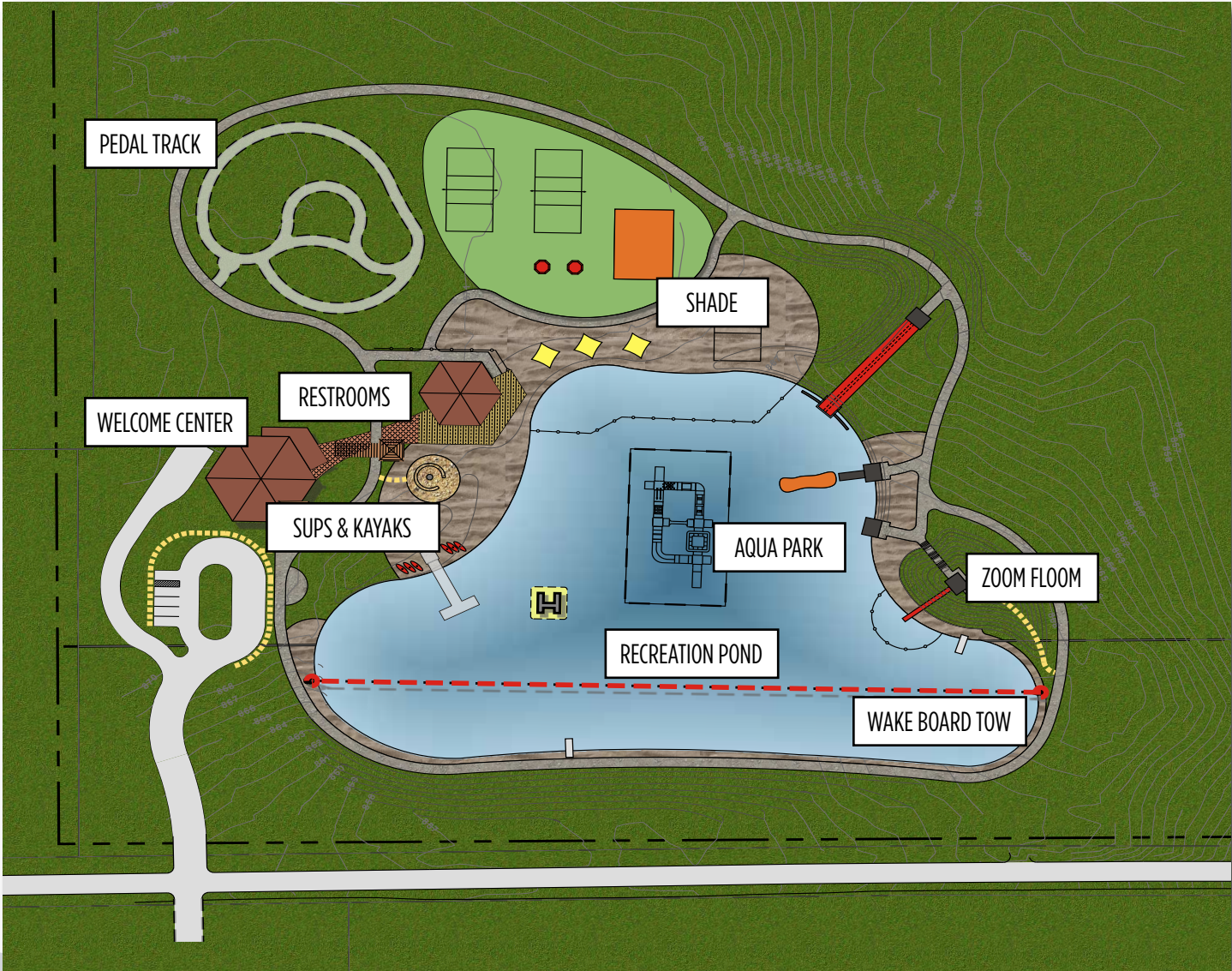


**Sketch Layout of Concept**



# Camp Crosley

North Webster, Indiana



CRS Proposal



Aqua Park Example



Pedal Track



Wake Board Tow



Zoom Floom



Shade





**“We created a beach in the middle of Indiana!**  
CRS brought the expertise to make this happen.  
We couldn’t find that anywhere else.”

— Camp Crosley Executive Director RICHARD ARMSTRONG

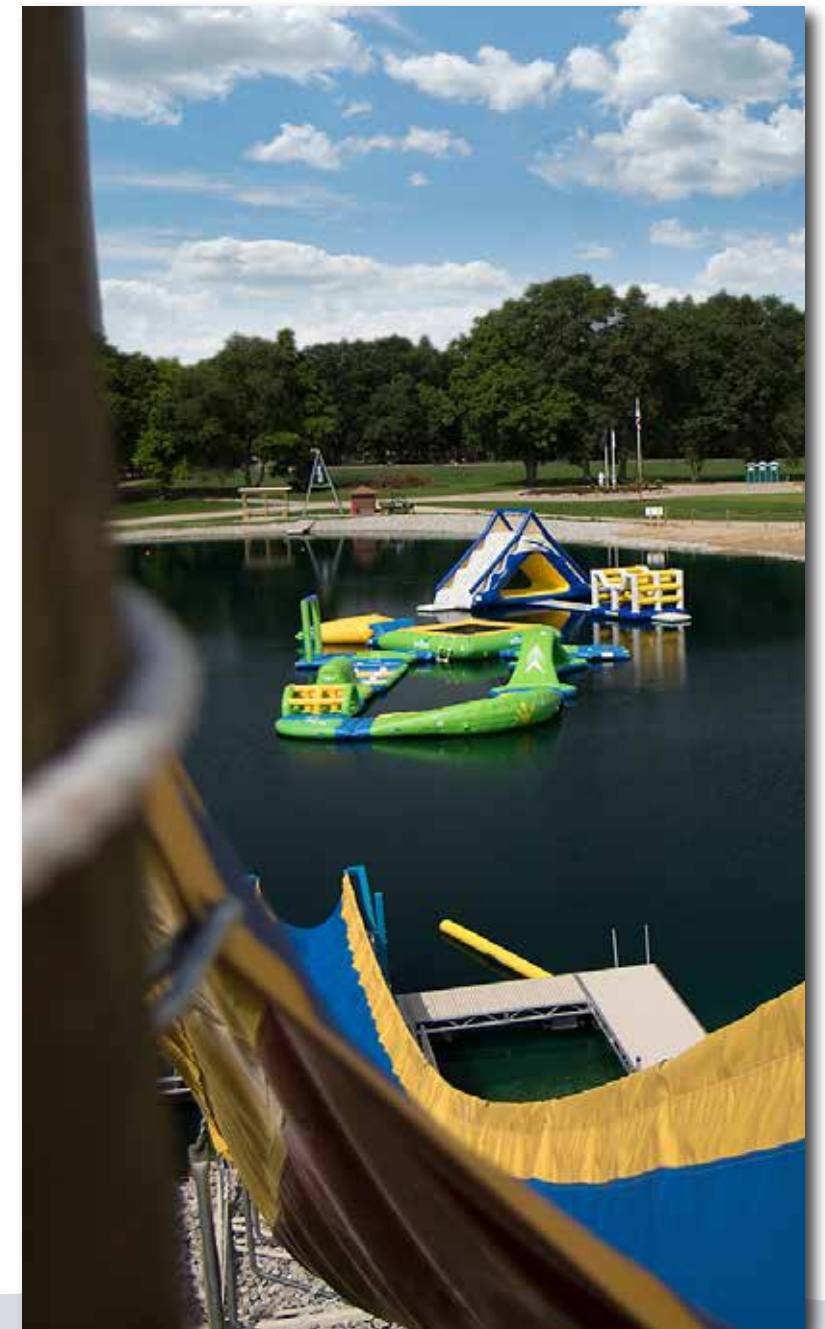
**Aqua Park & Wake Board Tow**



**Wibit Sports Park**



**Spin Wheel**



**Wet Willie & Aqua Park**



# Water-Based Family Entertainment Zone References

## WhoaZone at Whihala Beach Whiting, Indiana

The Whoa Zone at Whihala Beach, a public-private venture, was custom-designed by Commercial Recreation Specialists and is among the first generation of floating obstacle courses for all ages and abilities. Along with the course, the facility includes stand-up paddleboards, kayaks, beach cabanas, chairs and more. It is nestled in the northwest corner of Indiana about 15 miles south of downtown Chicago, and is the first attraction of its kind on Lake Michigan. Whihala Beach is already recognized as an iconic nature-based summer activity area, and the Whoa Zone at Whihala Beach will significantly increase the destination's "wow factor."



## Wake Island Pleasant Grove, California

The owners of Wake Island turned to Commercial Recreation Specialists to transform it into a more thrilling, more appealing and more memorable experience. They consulted with the experts at CRS, describing their business goals and looking for a tailored plan. CRS devised a comprehensive plan that featured a strategy focused on creating easy entry points and exits, varying degrees of challenge, and differing rotations of play that would encourage repeat visits. Drawing upon CRS's engineering and technical know-how, the resulting Sports Park at Wake Island was built for success by creating a self-directed experience that keeps guests coming back for more.



## Lake Gregory Crestline, California

The Grand Re-Opening at Lake Gregory in Crestline, California, was huge. But the beginnings were modest for the California Parks Company. Despite their close proximity to San Bernardino and its large population base, Lake Gregory had struggled to generate consistent revenue. Our partnership with them revitalized the lake and created a new aquatic destination.





# Splashpads

# Moon Lake Park

## Rice Lake, Wisconsin

Commercial Recreation Specialists collaborated directly with the Mayor and city officials to plan, design and implement the installation of this splashpad at Moon Lake Park in Rice Lake, WI. To add a much needed water amenity to the area, CRS designed the aquatic playground with over 35 spray features controlled by a central command center to provide a multitude of water sensations and sequence of spray events. The design also featured a flow-through water management system so that the city could avoid long term maintenance and associated costs found with other water management systems. CRS Worked very closely with the parties involved to bring this project to a successful completion and aid in the enhancement of the community.

**COMMERCIAL RECREATION SPECIALISTS PROVIDED:**

- Design Consultation Services; Water Feature Selection; Flow-Through System Design & Engineering
- Water Feature & Flow-Through System Supplier
- On-Site Construction and Supervision; Certified Start-up & Training Services
- Post-Installation Support

**PROJECT TYPE:** Splashpad  
**SIZE:** 3,650 SF  
**TYPE:** Flow-Through  
**COST:** \$275,000  
**GPM:** 193

**CONTACT:** Jim Anderson  
Director Streets, Parks & Recreation, City of Rice Lake  
715.234.7402

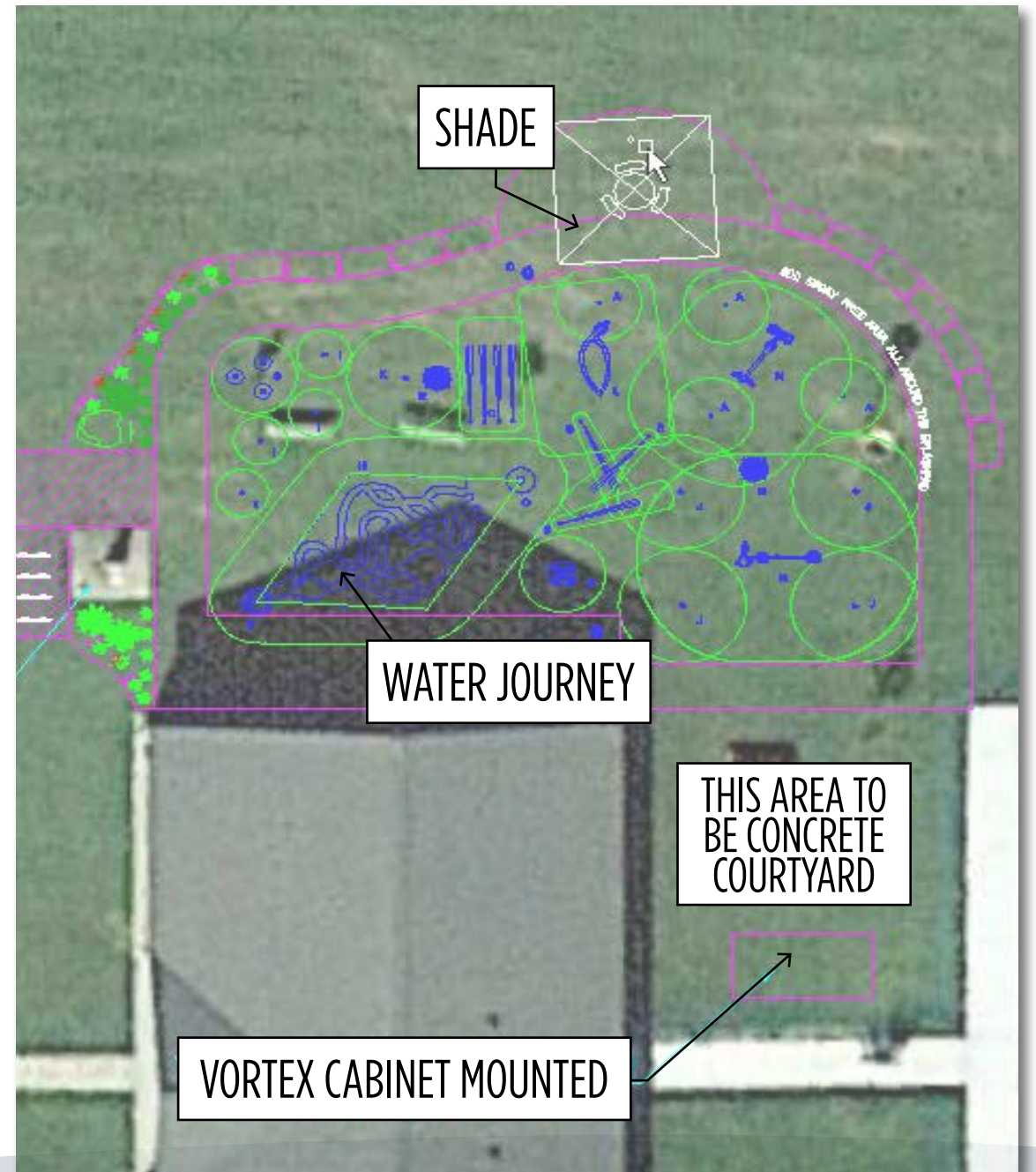
**STATUS:** Completed in Fall 2016







Satellite Image of Site

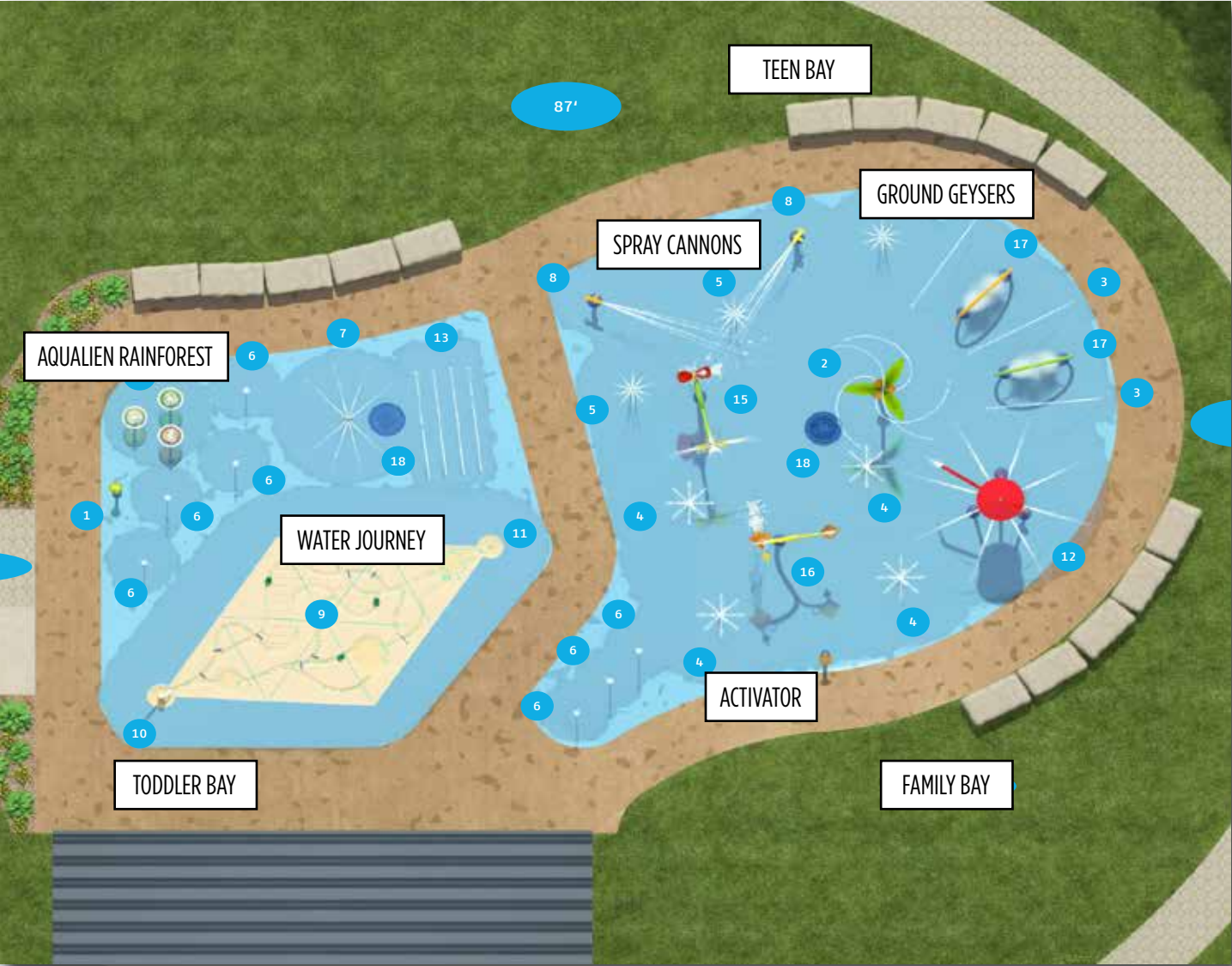


Sketch Layout of Concept



# Moon Lake Park

Rice Lake, Wisconsin



**Water Journey**



**Spray Cannons**



**Aqualien Rainforest**



**Ground Geysers**



**Activator**





# Splashpad References

## Huset Park Columbia Heights, Minnesota

CRS collaborated directly with the owner and a selected engineering firm to plan, design and implement the installation of this splashpad at Huset Park in Columbia Heights, MN. As part of a park renovation, CRS designed the aquatic playground with over 41 spray features controlled by a central command center to provide a multitude of water sensations and sequence of spray events. The design also featured a flow-through water management system so that the city could avoid long term maintenance and associated costs found with other water management systems. CRS Worked very closely with the parties involved to bring this project to a successful completion and aid in the revitalization of the community.



## City Park Cologne, Minnesota

As an alternative to a community swimming pool, the City of Cologne partnered with CRS to create a new Splashpad that fit their specific needs. The design features an Eco-friendly recirculating water management system and a combination of vertical and ground features with a variety of spray patterns to create a unique aquatic experience. The city now has a recreation destination that residents can enjoy for years to come.



## Elver Park Madison, Wisconsin

CRS worked with city staff and their design team to create an iconic destination at Elver Park. The Splashpad design incorporated a combination of interactive vertical elements and lower stature features that incorporated brushed stainless steel and vibrant colors to create a memorable space. With the incorporation of shade structures and seating around the Splashpad, CRS was able to create a cohesive design for this community asset. The Elver Park Splashpad was completed using a combination of city funds and grants.





# Playgrounds

# Tracy Elementary School

## Tracy, Minnesota

Tracy Elementary School partnered with Commercial Recreation Specialists to plan, design and install a Playcraft themed playground and pour in place safety surfacing. The new playground incorporates Playcraft's City theme to increase play value and promote imaginative play while dynamic components promote active recreation, balance, coordination and social interaction. The pour in place safety surfacing adds an extra touch of whimsy to the city themed playground while providing the needed fall protection. With help from the community through fund raising and construction volunteering, Tracy Elementary now has a playground that the children will enjoy for many years to come.

### COMMERCIAL RECREATION SPECIALISTS PROVIDED:

- Design Consultation Services
- Commercial Playground Equipment Supply
- DuraPlay pour in place Safety Surfacing
- Certified Installation Lead for Community Build
- Project Management

**PROJECT TYPE:** Playground  
**SIZE:** 4,717 SF  
**TYPE:** Themed  
**COST:** \$385,000

**CONTACT:** Michael Munson  
Principal  
507.629.5518

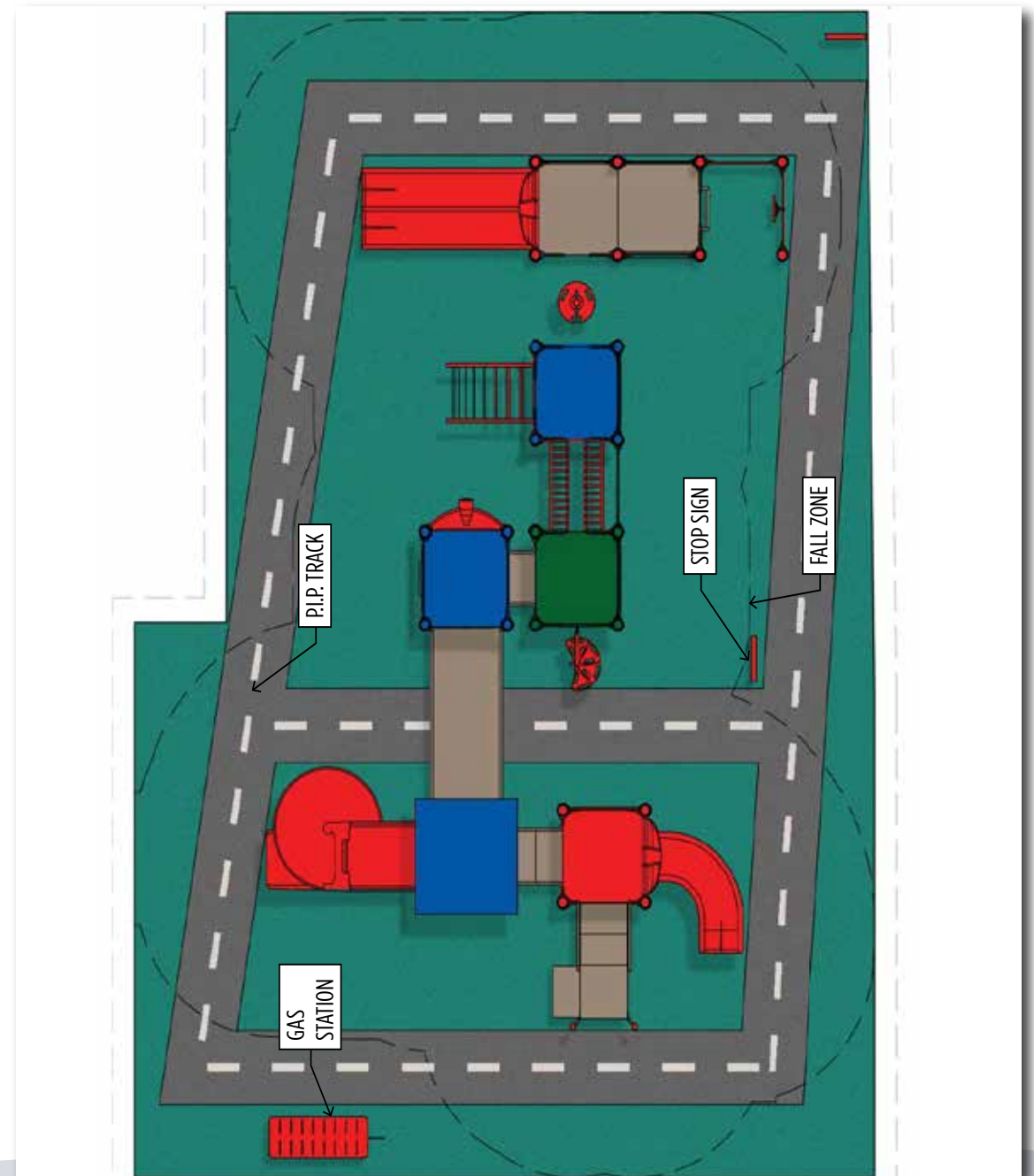
**STATUS:** Completed in Summer 2017







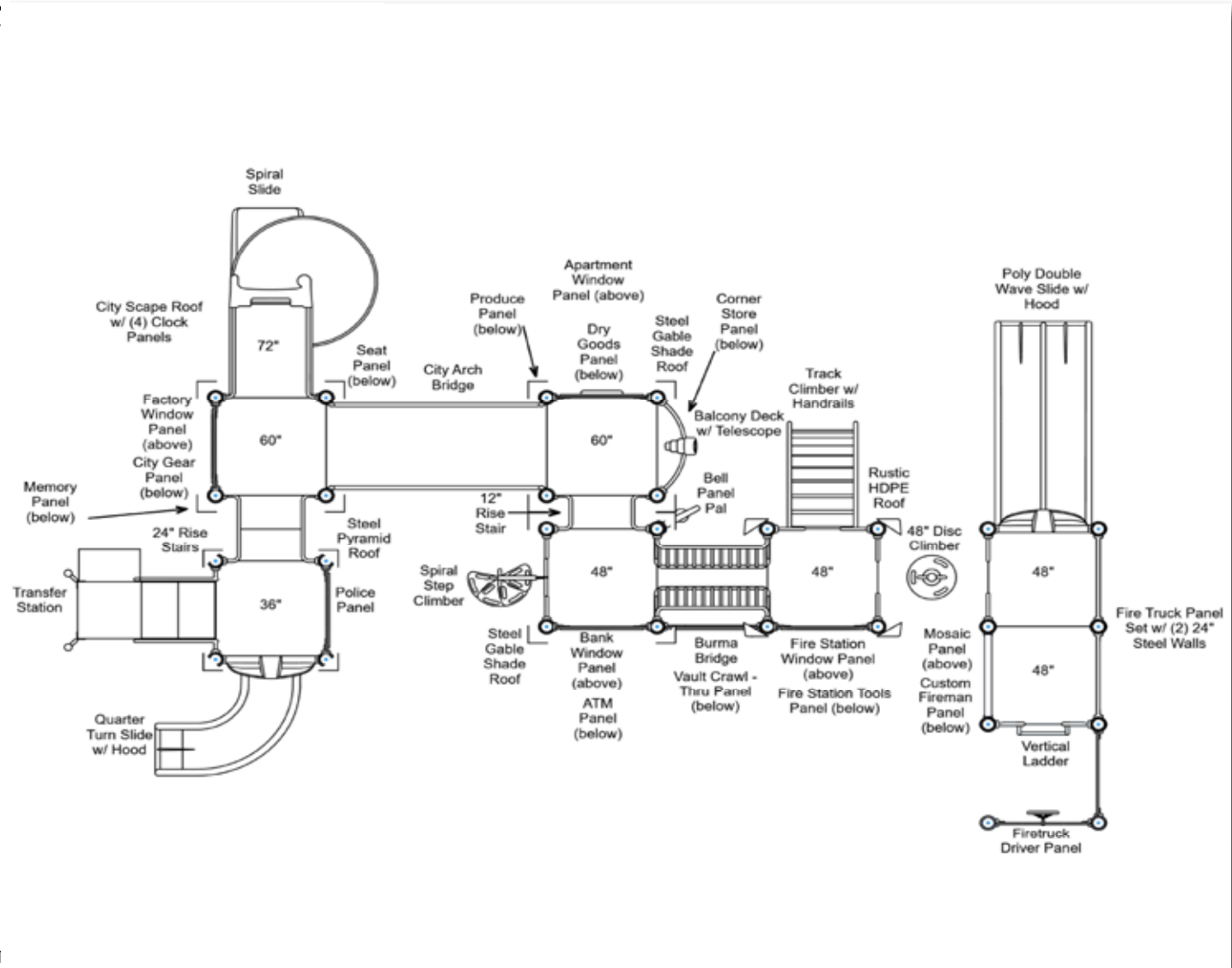
### Satellite Image of Site



### Sketch Layout of Concept

# Tracy Elementary School

Tracy, Minnesota



Bridge



Spiral Step Climber



Spiral Slide



Track Climber



Double Wave Slide



Telescope







# Playground References

## Wallace Park Lake Mills, Wisconsin

The Lake Mills Rotary of Wisconsin teamed up with Commercial Recreation Specialists (CRS) this spring to plan, design and install a new Xccent playground at Wallace Park. The playground combines independent elements with classic play structures to promote active recreation, balance, coordination and social interaction.

**CONTACT:** Amy Litscher  
Lake Mills Rotary Club  
alitscher@saga-ee.com



## Westridge Park Verona, Wisconsin

The City of Verona partnered with Commercial Recreation Specialists (CRS) to plan, design and install a new Playcraft playground at Westridge Park. The playground incorporates Playcraft's Round-5 and Revolution Play Systems along with an independent net climber to create a dynamic play space that promotes active recreation, strength, balance, coordination and social interaction.

**CONTACT:** Dave Walker  
Park and Urban Forestry Director  
608.845.6695



## Four Corners Park Shorewood Hills, Wisconsin

The Village of Shorewood Hills partnered with Commercial Recreation Specialists (CRS) to plan, design and install a new Playcraft playground at Four Corners Park. The playground incorporates Playcraft's Round-5 and Revolution Play Systems to create a dynamic play space that promotes creative play, active recreation, strength, balance, coordination and social interaction through climbing and motion-based play elements.

**CONTACT:** Karl Frantz  
Village Administrator  
608.267.2680





# Miniature Golf

# Yogi Bear's Jellystone Park at Lazy River

Gardiner, New York

The existing miniature golf course at Yogi Bear's Jellystone Park™ at Lazy River had seen better days and that was reflected in overall course usage. When new owners surveyed the grounds, they knew it was time to revamp the course and step up their short-game. We worked with the owners to extend the course footprint for longer, more challenging holes and a better traffic flow. With the course being designed around an existing gold mining attraction, a custom designed mine sluice hole was incorporated to add to the overall theme. To finish the design, we employed our nature-based course concept and worked with existing landscape and added native rocks and plantings to enhance the space and natural beauty. Campers are using the new course more than ever and the new owners would agree, this course is a hole in one!

**COMMERCIAL RECREATION SPECIALISTS PROVIDED:**

- Design Consultation Services; Course Layout
- Course Installation; Pouring Concrete; Planting; Carpet Laying
- On-Site Construction and Supervision
- Post-Installation Support

**PROJECT TYPE:** 18 Hole Course  
**SIZE:** 18,000 SF  
**TYPE:** Adventure Style  
**COST:** \$130,000

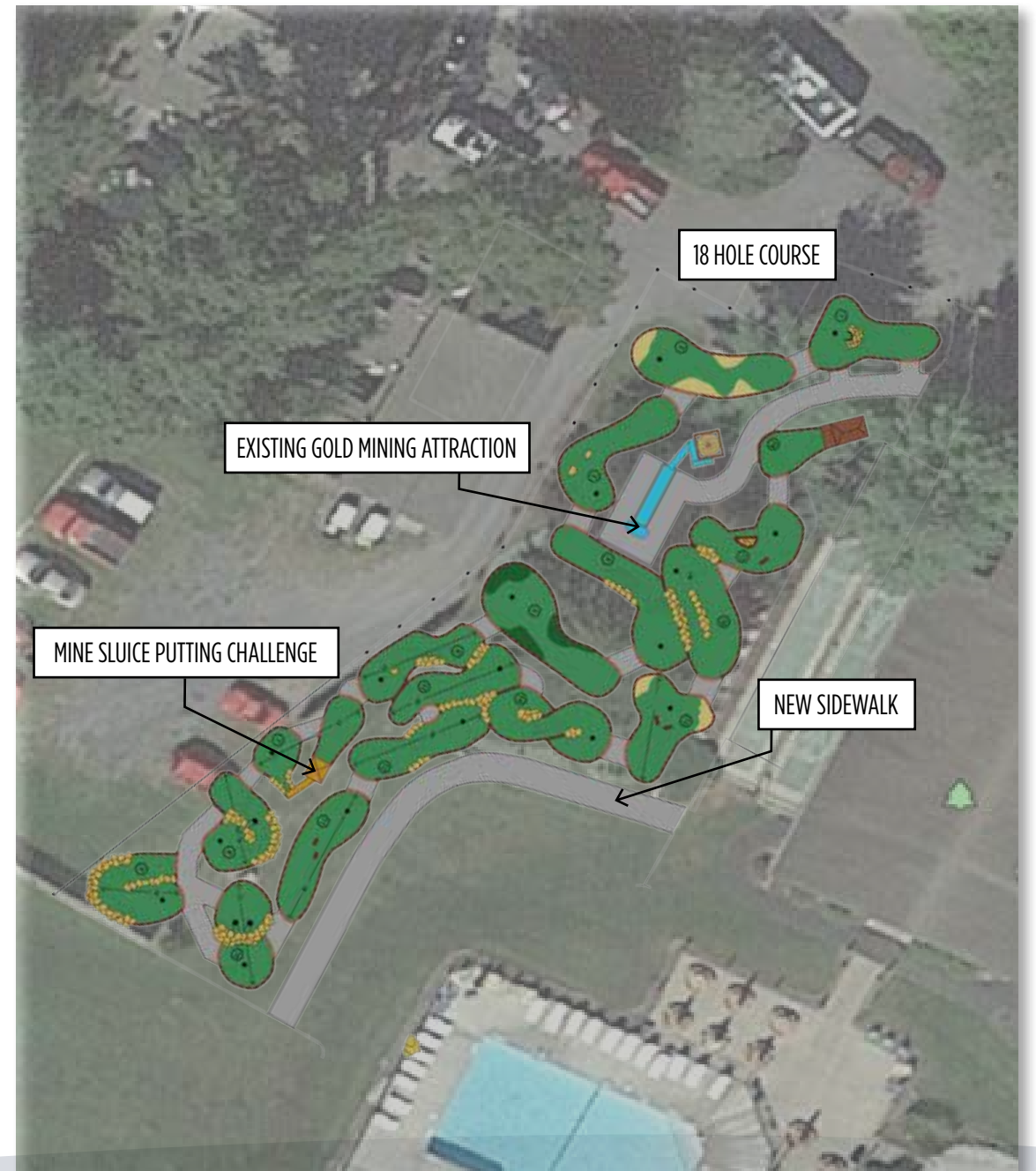
**CONTACT:** Greta Bossenbroek  
Regional Manager, Northgate Resorts  
616-881-2166  
**STATUS:** Completed in 2016







Satellite Image of Site



Sketch Layout of Concept



# Yogi Bear's Jellystone Park at Lazy River

Gardiner, New York



Mining Attraction



Native Rock



Native Plantings



Mine Sluice Putting Challenge



New Trees







# Miniature Golf References

## YMCA of the Rockies Granby & Estes Park, Colorado

The existing miniature golf courses at the conference centers of the YMCA of the Rockies just weren't up to par. After seeing a decline in course usages at both their Estes Park Center and Snow Mountain Ranch, program directors recognized it was time to upgrade and modernize the courses.

We worked with YMCA of the Rockies to design and construct three unique adventure-style miniature golf courses between two locations. The courses were to be more engaging for the guests and campers that frequent the conference centers while helping to beautify the area where the previous courses had occupied.



## Camp Hillard Westchester, New York

The owners of Camp Hillard were looking for a new golf activity to add to the camp's extensive programming options, but space was limited. As planning continued for the space continued, CRS and the owners realized they needed a SNAG® in their plan.

We worked with the owners to develop a 'Starting New At Golf' or SNAG® golf practice facility complete with tee boxes, sand traps and multiple greens that would work perfectly within the space while allowing young campers to build their skills. The facility provided space for more advance golfers to be able to hone their skills as well with a putting green and driving range that were incorporated into the space.





CRS4REC.COM

# Unparalleled Industry Knowledge

## — AQUATIC ACTIVITIES

- | WATERFRONT INFLATABLES
- | ZOOM FLOOM
- | KAYAKS
- | STAND UP PADDLEBOARDS
- | PEDAL BOATS
- | SPLASHPADS
- | POOL PLAY & POOL SLIDES
- | CUSTOM DOCK SYSTEMS
- | AQUATIC CLIMBING WALLS
- | MODULAR PLAY ELEMENTS
- | WBFEC

## — STRUCTURES & FURNISHINGS

- | SHELTERS & PAVILIONS
- | FABRIC SHADE STRUCTURES
- | SITE FURNISHINGS
- | SPORTING GOODS/BLEACHERS
- | ADULT FITNESS
- SAFETY
- | LIGHTNING DETECTION
- | WARNING SYSTEMS
- | SAFETY SURFACING
- | WATERFRONT SAFETY
- | CAMP EMERGENCY ALERT SYSTEM

## — ADVENTURE MINI-GOLF

- | MINIATURE GOLF COURSES
- SOFT-CONTAINED PLAY UNITS
- | CRS SOFT PLAY
- PLAYGROUND EQUIPMENT
- | XCCENT PLAY
- | GO PLAY
- | INDEPENDENT PLAY
- | LAPPSET
- | CLIMBING BOULDERS
- PRIME KARTS
- | PRIME PEDAL KARTS

**Energize your scene with an active experience**

that's non-stop fun in, on, and around your water.



COMMERCIAL RECREATION SPECIALISTS

**Serious About Fun** | 877-896-8442 | **CRS4Rec.com**