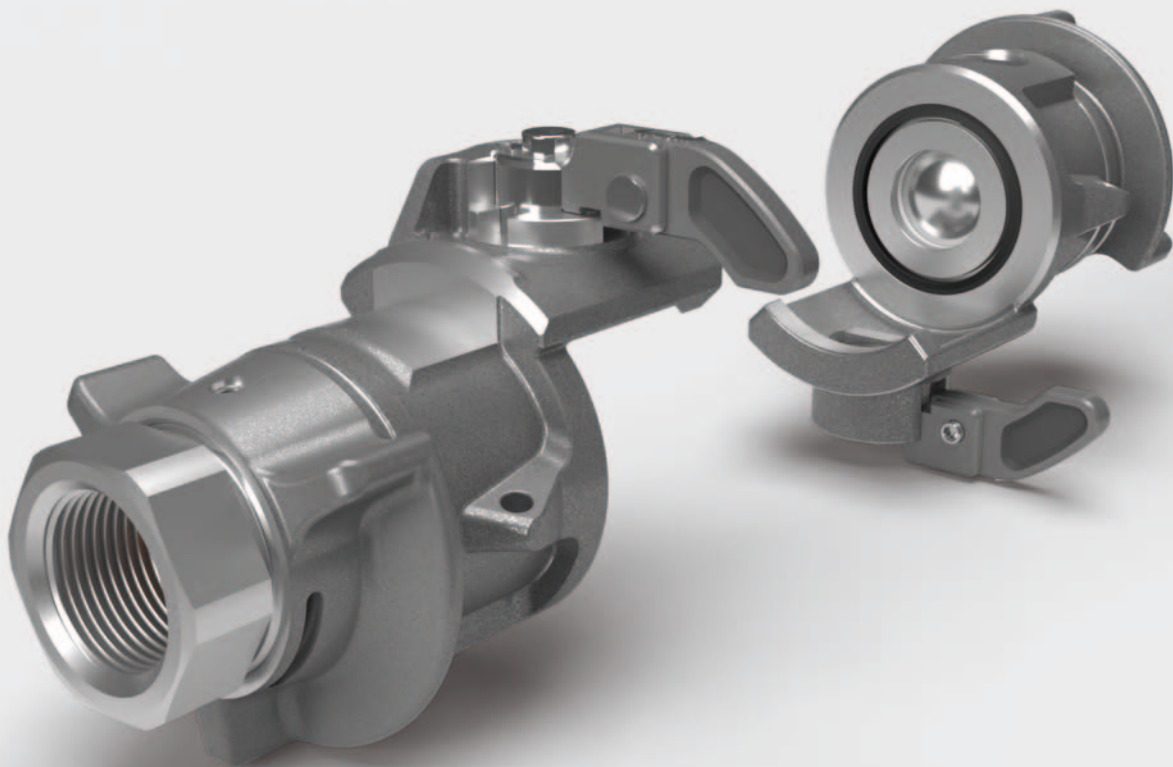


FAST MOVING TECHNOLOGY

***STÄUBLI***

# TDU 24

Cooling | High flow transfer



# Direct flow for cooling applications



## Applications

- Connections for cooling of electronic equipment, in use in super computer, data center, telecommunications...
- Thermoregulation
- Broadcasting
- Water cooling unit (chiller)
- Rear door
- Heatexchanger

## Full flow

The TDU 24 coupling has a spherical valve which ensures a direct flow of fluid, allowing for an optimal flow rate and pressure drop ratio.

## Two symmetrical parts for TDU 24 unisex

The TDU 24 is a symmetrical coupling. There is no male or female differentiation and both sides that need to be connected are fitted with identical interfaces.

## Ease of use and ease of handling

- The integrated swivel prevents torsion of the hose, preventing the coupling from causing any stress even under pressure.
- The locking option for the swivel allows an easier connection when used on a fixed point.
- Intuitive handling without predefined sequence required to move the levers.

## Quick, simple and safe connection

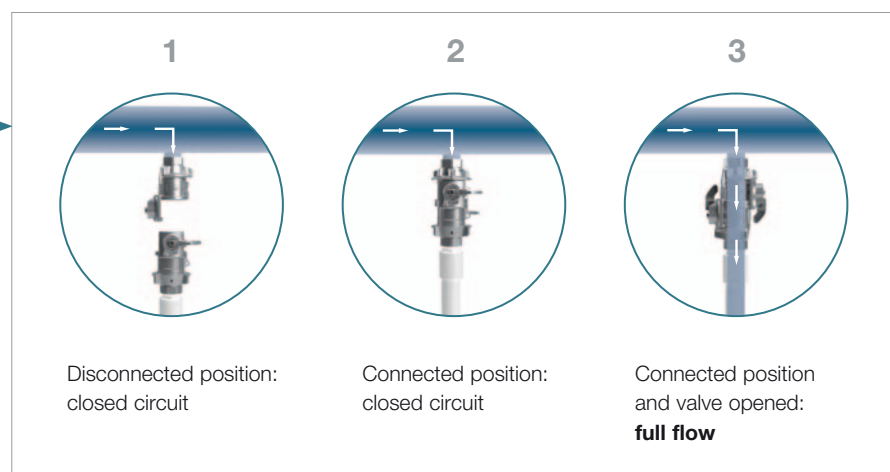
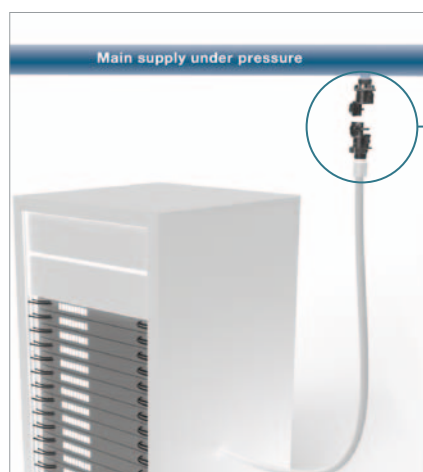
The TDU locking system is independent of the fluid stream. It allows connection even if one side is under pressure.

## Completely safe operation


Safety is ensured as the valves can only be opened when both coupling halves are fully connected. For disconnection, both valves must be closed completely.

## Optional colour code

For easy circuit identification, two colours (red or blue) are available.



# Technical specifications

Nominal diameter DN (mm)	24
Maximum allowable pressure PS (bar)	10
Minimum and maximum allowable temperatures TS (°C) with Ethylene-Propylene (EPDM) seal	0 to + 110
Shut-off double	

## Sealing

- O-ring: Ethylene-Propylene (EPDM)
- Bearing of ball valve: PTFE

## Connection

- Thread: male BSP, female NPT
- Hose barb

Other connections are available on request.

## Construction

- Stainless steel

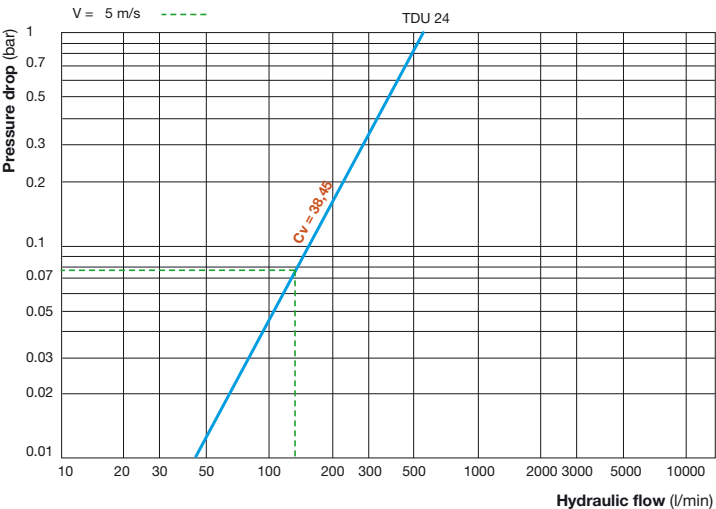
## Hydraulic flow rate / pressure drop charts

### Test conditions:

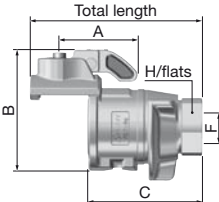
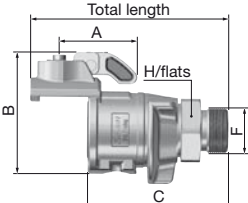
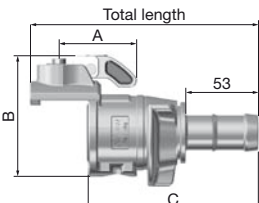
Fluid: water  
Density: 998 kg/m<sup>3</sup>  
Viscosity: 1.08 cSt

Flow at 5 m/s: 136 l/min

According to your application, each product is available in fixed or swivelling.



## Dimensions

	Connection F	Dimensions (mm)				
		A	B	C	Total length	H/flats
<b>Female thread</b> 	NPT 1"	56.6	95.5	82.4	124.4	41
<b>Male thread with front seal</b> 	BSP 1"	56.6	95.5	101.4	143.4	46
<b>Hose barb</b> 	Hose barb 25 mm	56.6	95.5	123.9	165.9	



■ Stäubli Units    ○ Representatives/Agents

## Global presence of the Stäubli Group

[www.staubli.com](http://www.staubli.com)