

Your gateway to the HPCI

the world's top-class High Performance Computing Infrastructure



Research Organization for Information Science and Technology

HPCI is open to the world!

HPCI, High Performance Computing Infrastructure, allocates computing resources of Tier 0 and a part of Tier 1 system from universities and national laboratories in Japan at open calls.

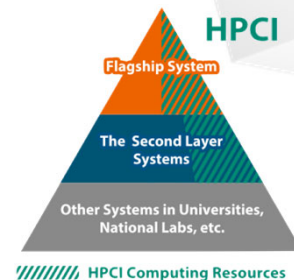
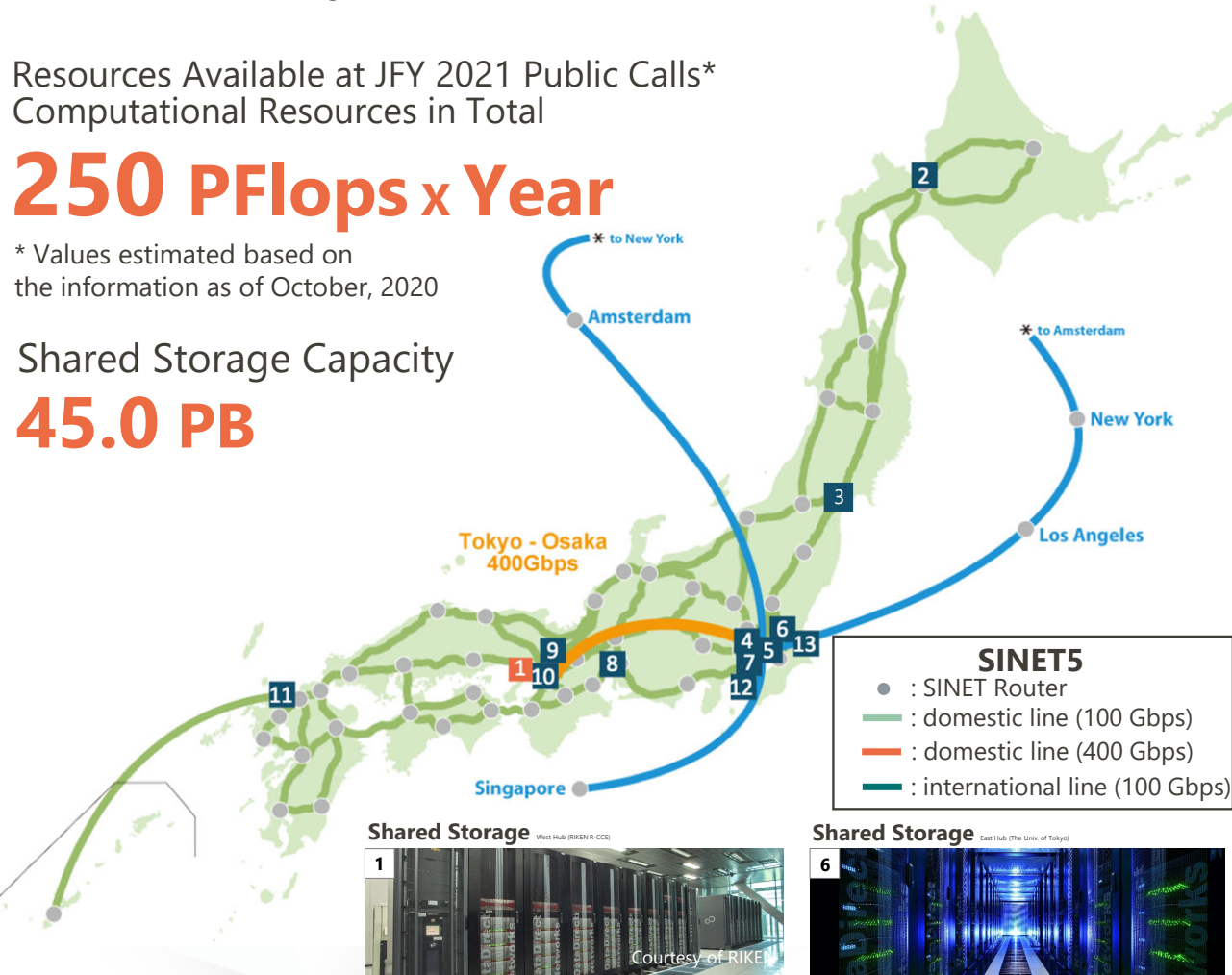
Resources Available at JFY 2021 Public Calls*
Computational Resources in Total

250 PFlops x Year

* Values estimated based on
the information as of October, 2020

Shared Storage Capacity

45.0 PB

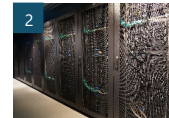


RIKEN R-CCS
Supercomputer Fugaku



Shared use scheduled to start in 2021

Hokkaido Univ.
Grand Chariot



Tohoku Univ.
AOBA-A



Univ. of Tsukuba
Cygnus



JCAHPC
Oakforest-PACS



The Univ. of Tokyo
Oakbridge-CX



Tokyo Inst. of Tech.
TSUBAME3.0



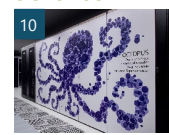
Nagoya Univ.
"Flow" Type I



Kyoto Univ.
Cray XC40



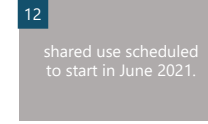
Osaka Univ.
OCTOPUS



Kyushu Univ.
ITO Subsystem B



JAMSTEC
the Next Generation
Earth Simulator



shared use scheduled
to start in June 2021.

AIST
ABCI



Call for Proposals for HPCI

Who can apply?

Applications from all researchers are welcome, from academia to industry^{*1}, including from overseas.

General Terms and Conditions

HPCI calls for projects which can **effectively utilize the performance of allocated resources**. Projects go through peer-review process based on each category's criteria, but conditions deem that

- Project execution and utilization of the results are limited to **non-military purposes**.
- Achievements are required to be **open to the public**.

Around

150 awarded projects
1,000 users

every year^{*3}

Project Categories	Fugaku	Tier 1 resources
General Access / Junior Researchers ^{*2} / Industrial Access	Twice per year	Once per year
Small Scale Projects for General Access / Junior Researchers ^{*2} / Industrial Access	Year-round Opening Details to be announced in March 2021	-
Trial Access / Industrial Trial access		Year-round opening * Industrial Access only
Proprietary Access / Industrial Proprietary Access		
Proprietary Trial Access		-

^{*1} PI from industry needs to belong to a private company registered in Japan.

^{*2} Junior Researchers Projects are only for academic users.

^{*3} Numbers based on awarded projects of K computer + Tier 1 resources from JFY 2014 to 2019



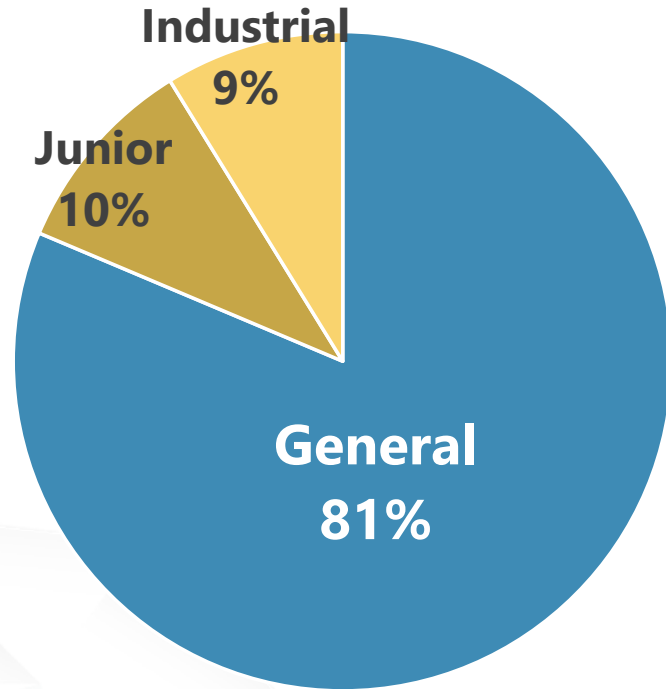
For more details, visit HPCI Portal

https://www.hpci-office.jp/pages/e_proposal_submission

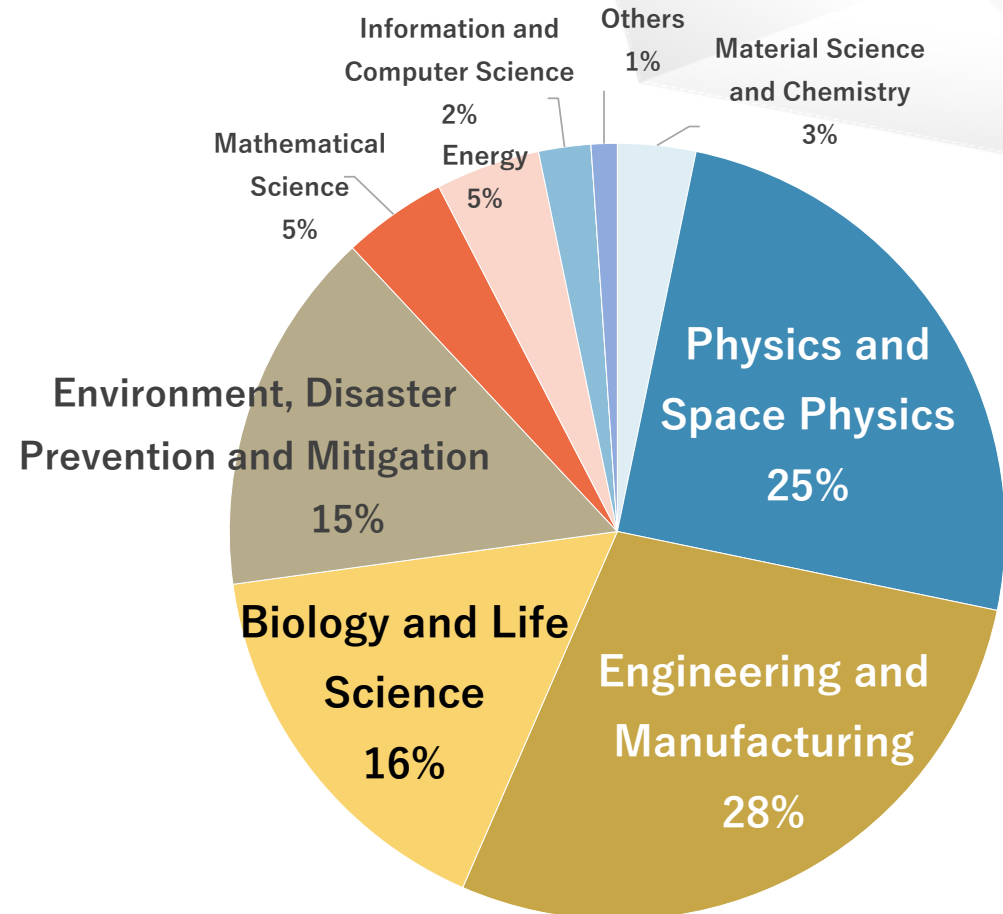
Statistics of HPCI (FY2020*)

HPCI resource allocation

15 PFlops x Year*



Research areas of awarded projects (Project number based)



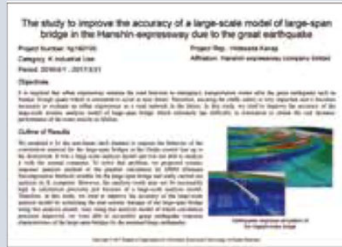
* Fiscal 2020 is a transition phase to the supercomputer Fugaku, so the data above does not include the flagship system (Fugaku or its predecessor, K computer).

Publications

HPCI User Reports

Around 1,400 User Reports have been published in the HPCI Portal Site since the start of HPCI shared use in September 2012.

https://www.hpci-office.jp/pages/e_user_report



HPCI Publications DB

You can search the database with over 8,500 HPCI supported publications.

[illegible]

<https://www.hpci-office.jp/hpcidatabase/publications/search.html?lang=en>

HPCI Booklets

You can download the research achievements using the HPCI system.

https://www.hpci-office.jp/pages/e_hpci_booklet



All the information about the HPCI

HPCI Portal site

<https://www.hpci-office.jp/folders/english>

If you have any question, contact

Helpdesk

https://www.hpci-office.jp/pages/e_helpdesk

Activities of RIST in HPCI

RIST carries out the General Coordination for HPCI Operation, as well as the User Selection, Resource Allocation, User Support and other relevant activities.

- **User Selection and Resource Allocation**

RIST carries out the user selection and resource allocation of Supercomputer Fugaku and other computers of the HPCI system through transparent and fair procedures adopting a peer review process.

- **User Support**

RIST provides a variety of services with Helpdesk as the general contact point for users.

