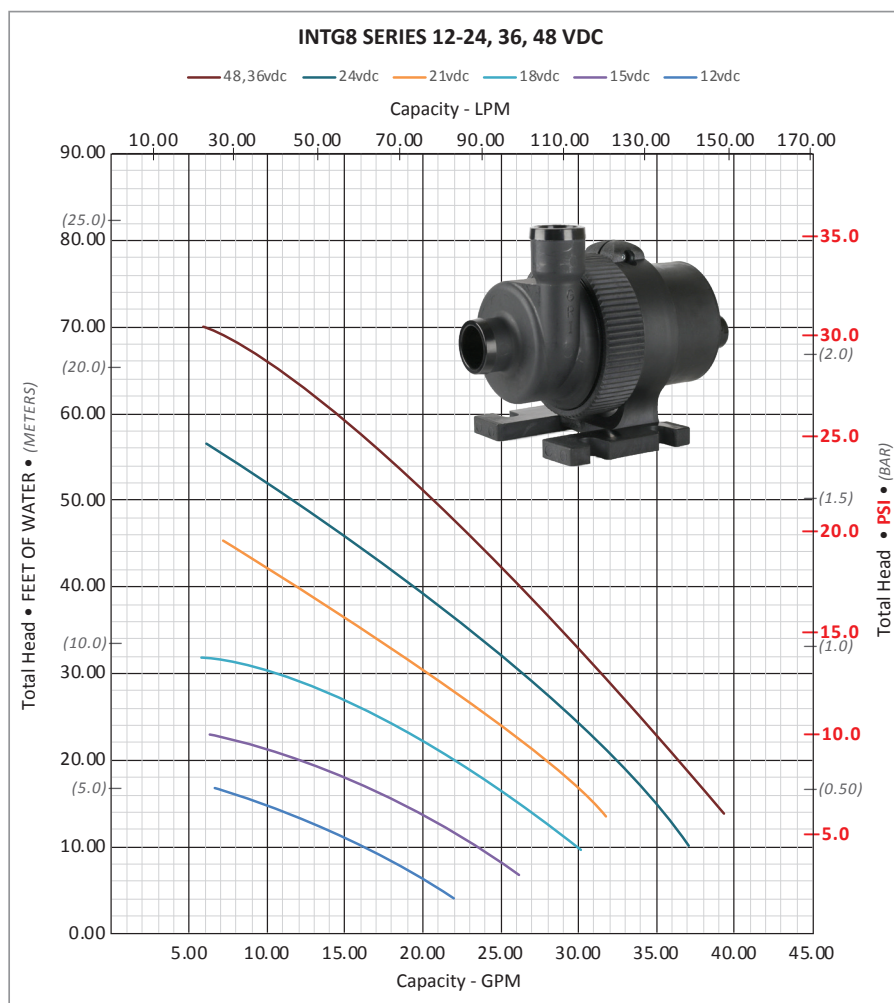


## INTG8 Series • Maximum flow per voltage

| Voltage    | Flow (GPM) | Flow (L) | Ttl. Hd. (Ft) | Ttl. Hd. (PSI) | Ttl. Hd. (BAR) | Ttl. Hd. (M) |
|------------|------------|----------|---------------|----------------|----------------|--------------|
| 48   36vdc | 39.29      | 148.74   | 13.84         | 6.00           | 0.41           | 4.22         |
| 24vdc      | 37.41      | 141.62   | 9.95          | 4.31           | 0.30           | 3.03         |
| 21vdc      | 31.77      | 120.27   | 13.58         | 5.89           | 0.41           | 4.14         |
| 18vdc      | 30.12      | 114.00   | 9.64          | 4.18           | 0.29           | 2.94         |
| 15vdc      | 26.20      | 99.19    | 6.70          | 2.90           | 0.20           | 2.04         |
| 12vdc      | 21.97      | 83.17    | 4.07          | 1.76           | 0.12           | 1.24         |



## Specifications

**Maximum System Pressure:** 75 psi

**Approximate Weight:** 3.5 lbs (1596.645 grams)

**Ports:** 1.25" MHB

## Materials In Contact With Solution

|                      |                            |                                    |
|----------------------|----------------------------|------------------------------------|
| <b>Body:</b> PPS     | <b>Housing:</b> PPS        | <b>Static O-Ring:</b><br>EPDM, FKM |
| <b>Impeller:</b> PPS | <b>Pump Shaft:</b> Ceramic |                                    |

## Motor Specifications

**Motor:** Integrated, Brushless DC

**Supply Voltage:** 12-48 VDC

**Electronics Maximum Power:** 600 Watts

To protect the control board, each Integrity Series pump will be issued with a Maximum Power limit (Watts). To stay within this limit, the recommended fuse size (Amps) will be based on the voltage supplied.  
(Watts = Voltage X Amps)

## Control Options

- **Direct Supply Voltage:** Speed of the pump determined by the voltage supplied
- **Analog:** 0-5v DC signal
- **Digital:** PWM
- **CAN-Bus:** Option available
- **Tachometer:** Feedback option available

## Maximum Fluid Rating Chart

| Controller Position   | Maximum Fluid Temp Rating |
|-----------------------|---------------------------|
| Separate from pump    | 225°F (107°C)             |
| Within pump's housing | Not Applicable            |

Various factors influence the recommended maximum temperature rating. These factors play a role in determining the pump's life and applied warranties. In some applications, a higher maximum fluid temperature rating may be warranted.

Factors influencing maximum temperature rating include, but are not limited to:

- Starting temperature of fluid in system
- Ambient temperature
- Required performance, application's specifications
- Run time

## Available Agency Approvals

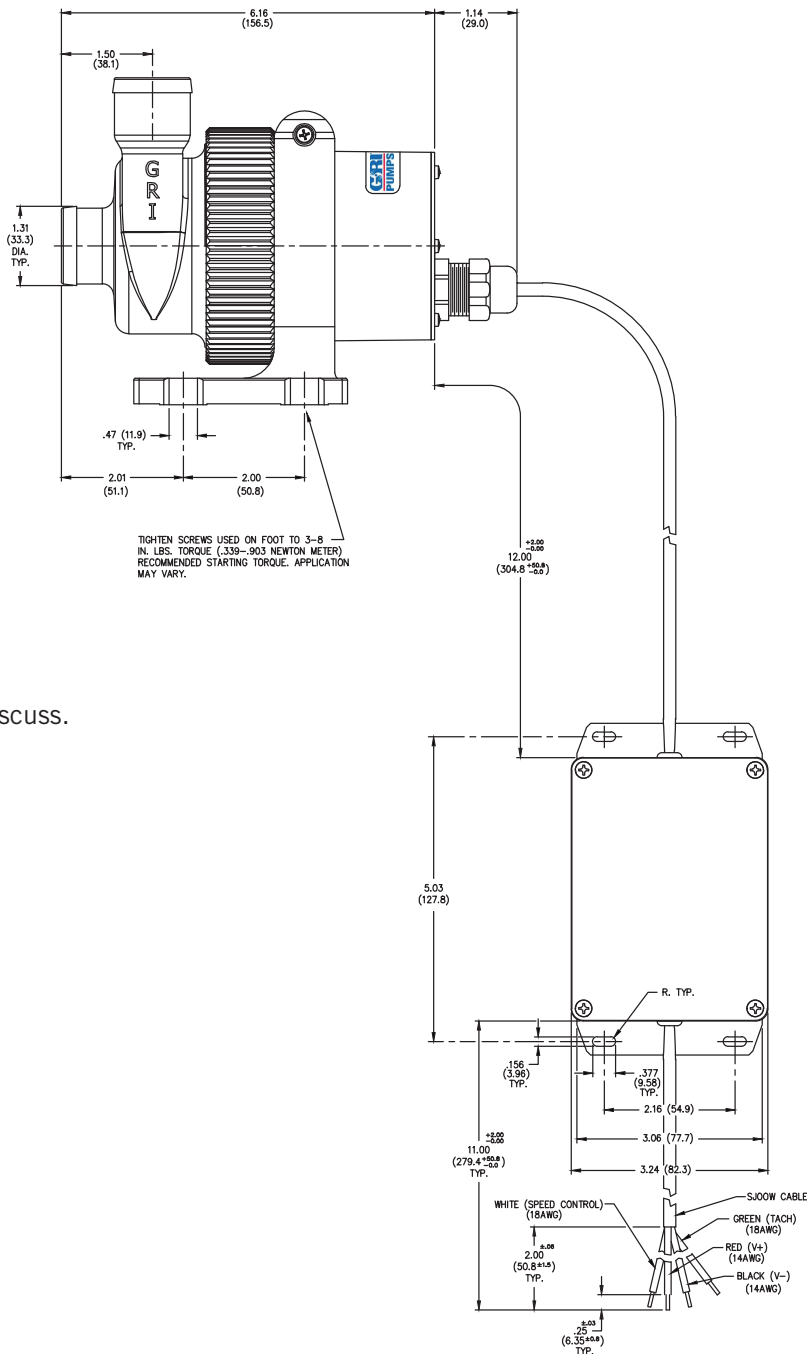
**Contact GRI**

**RoHS/REACH**

Many GRI pumps are RoHS & REACH compliant. For declarations by specific model numbers, please contact GRI.

Note: Testing performed in a controlled laboratory environment. Actual performance may vary (+) or (-) 10% from the information shown.

**Do Not Run Pumps Dry. Pumps must be in a continuous flooded suction environment.**



Integrity Series Pumps are designed and manufactured specifically for OEM customization. If you don't immediately find a pump that meets your exact requirements, our dedicated Pump Team is ready to work with you in developing a solution specific to your application.

| Model     | Voltage   | Speed Control                  | Lead Wires                               | Max. Flow<br>GPM (LPM) | Max. Head<br>Feet (PSI) | Connections Inlet/<br>Outlet (Inches) | O-Ring<br>Material |
|-----------|-----------|--------------------------------|------------------------------------------|------------------------|-------------------------|---------------------------------------|--------------------|
| INTG8-244 | 9-36 VDC  | PWM /<br>Analog (0-5v Nominal) | 4 wires<br>(+), (-), Speed Control, Tach | 34.0 (130.0)           | 58.0 (25.0)             | 1.25 MHB                              | EPDM               |
| INTG8-484 | 36-60 VDC | PWM /<br>Analog (0-5v Nominal) | 4 wires<br>(+), (-), Speed Control, Tach | 38.0 (146.0)           | 75.0 (32.5)             | 1.25 MHB                              | EPDM               |

**Connectors:** MHB = Male Hose Barb | **O-Ring Material:** EPDM = Ethylene Propylene Diene Monomer, FKM = Fluoroelastomer (Available on request)