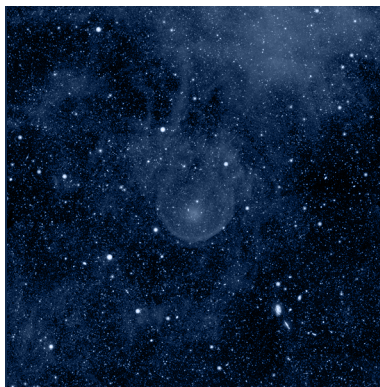
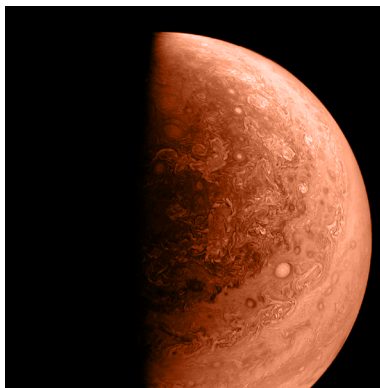


**I ILLINOIS**

NCSA | National Center for  
Supercomputing Applications

**CAPS**

Center for Astrophysical Surveys



The Center for Astrophysical Surveys at the University of Illinois at Urbana-Champaign is a newly developed center that brings cohesion and advancement to astrophysical survey science efforts across campus. CAPS strives to create a diverse and inclusive environment by offering annual postdoctoral and graduate fellowship programs.

Research at the center focuses on providing a better understanding of cosmological phenomena and, ultimately, the universe through analyzing and processing astrophysical data collected from surveys. The center will house several surveys, such as the U.S. Department of Energy and National Science Foundation Dark Energy Survey, producing the most extensive and accurate dark matter map, and the Vera C. Rubin Observatory's Legacy Survey of Space and Time, beginning in 2022.

Enabling collaboration between researchers, scientists, and students, CAPS adds to Illinois' longstanding legacy of pioneering research and accelerating education and innovation. The center will also increase accessibility to NCSA's advanced expertise, resources, and services in high-performance computing, software development, data processing, user experience design, standard AI execution, and consultation.

To learn more about CAPS

Email our director, Illinois Professor [Joaquin Vieira](#).